

UNITED STATES  
DEPARTMENT OF THE INTERIOR  
BUREAU OF LAND MANAGEMENT

Sundry Notices and Reports on Wells

RECEIVED  
BLM  
DEC 15 PM 1:48

## 1. Type of Well

GAS

## 2. Name of Operator

**BURLINGTON  
RESOURCES**

OIL &amp; GAS COMPANY

## 3. Address &amp; Phone No. of Operator

PO Box 4289, Farmington, NM 87499 (505) 326-9700

## 4. Location of Well, Footage, Sec., T, R, M

1750' FNL 1650' FEL, Sec. 6, T-29-N, R-7-W, NMMPM

## 5. NM Lease Number

SF-078943

## 6. If Indian, All. or

Tribe Name

## 7. Unit Agreement Name

San Juan 29-7 Unit

## 3. Address &amp; Phone No. of Operator

PO Box 4289, Farmington, NM 87499 (505) 326-9700

## 4. Location of Well, Footage, Sec., T, R, M

1750' FNL 1650' FEL, Sec. 6, T-29-N, R-7-W, NMMPM

## 8. Well Name &amp; Number

San Juan 29-7 U#46

## 9. API Well No.

30-039-07700

## 10. Field and Pool

Blanco Mesaverde

## 11. County and State

Rio Arriba Co, NM

## 12. CHECK APPROPRIATE BOX TO INDICATE NATURE OF NOTICE, REPORT, OTHER DATA

## Type of Submission

☒ Notice of Intent☐ Subsequent Report☐ Final Abandonment

## Type of Action

☐ Abandonment☐ Recompletion☐ Plugging Back☐ Casing Repair☐ Altering Casing☒ Other -☐ Change of Plans☐ New Construction☐ Non-Routine Fracturing☐ Water Shut off☐ Conversion to Injection

## 13. Describe Proposed or Completed Operations

It is intended to restimulate the Point Lookout intervals in the subject well according to the attached procedure and wellbore diagram.

## 14. I hereby certify that the foregoing is true and correct.

Signed Dan S. Spencer (JLD) Title Regulatory Administrator Date 12/14/98

TLW

(This space for Federal or State Office use)

APPROVED BY /s/ Duane W. Spencer

Title \_\_\_\_\_

Date DEC 21 1998

CONDITION OF APPROVAL, if any:

Title 18 U.S.C. Section 1001, makes it a crime for any person knowingly and willfully to make to any department or agency of the United States any false, fictitious or fraudulent statements or representations as to any matter within its jurisdiction.

NMOC

**San Juan 29-7 Unit #46**  
Mesaverde Restimulation Procedure  
Unit G, Section 6, T29N, R07W  
Lat: 36°- 45.4257'/Long: 107 ° – 36.5259'

***This well is currently completed in the Cliffhouse and Point Lookout intervals. During original completion the Point Lookout was stimulated with 30,000 lbs sand in slickwater at 27 BPM. It is intended to restimulate the Point Lookout interval with 100,000 lbs 20/40 sand in a 60Q 20lb linear gel.***

1. Inspect location and test rig anchors. Comply with all NMOCD, BLM, Forestry & BR rules and regulations. Dig flowback pit or set flowback tank. Haul to location 12 jts 2-7/8" N-80 tubing, 2-7/8" X 3-1/2" N-80 crossover, 4700' 3-1/2" N-80 frac string, and 2-400 bbl frac tanks.
2. MIRU. Fill 400 bbl tanks with 2% KCL water. Run fluid tests on water. Filter water based upon stimulation company water analysis. Record and report SI pressures on tubing, casing and bradenhead. Lay blowdown line. Blow well down and kill with 2% KCL water as necessary. ND WH and NU BOP with flow tee and stripping head. Test operation of rams. NU blooie line and 2-7/8" relief line. Redress production wellhead as needed.
3. TOOH with 2-3/8" Mesaverde production string set at 5293'. Visually inspect tubing, note and report any corrosion and/or scale in/on tubing. Replace bad joints as needed.
4. PU and RIH with a 4-3/4" bit, 5-1/2" (15.5 lb/ft) casing scraper on the 2-3/8" tubing. Clean out to PBTD (~5348') with air/mist. Fill hole with approximately 25 bbls water. TOOH.
5. RU wireline company. Run GR-CBL-CCL from PBTD til out of water to ensure good cement bond between Point Lookout and Cliffhouse. RD wireline.
6. PU and TIH with 5-1/2" bottom straddle packer, 9 joints 2-7/8" N-80 frac string, top 5-1/2" straddle packer. 3 jts 2-7/8" N-80 frac string, 2-7/8" X 3-1/2" N-80 crossover and the remaining 3-1/2" N-80 frac string. Set bottom straddle packer at ~4850' and top straddle packer at ~4580 (top Cliffhouse perforation at 4612' and bottom Cliffhouse perforation at 4832').
7. RU stimulation company. Pressure test surface lines to 7500 psi. Hold tailgate safety meeting. Hold 500 psi on annulus. Montior annulus pressure throughout job. Establish an injection rate into perfs with 2% KCL water observing a maximum pressure of 6500 psi. Once pressure has broken back and stabilized, shut pumps down and obtain an ISIP. Continue to breakdown Point Lookout perforations with 25 bbls 15% HCL at the maximum rate pressures will allow.

All acid on this well to contain the following additives per 1000 gals.

2 gal	HAI-81M	Corrosion inhibitor
5 gal	FE-1A	Iron Control
5 gal	FE-2A	Iron Control
1 gal	SSO-21	Surfactant
1 gal	ClaSta XP	Clay control

8. **Maximum surface treating pressure is 6500 psi.** Hold 500 psi on annulus. Montior annulus pressure throughout job. Fracture stimulate the Point Lookout with 100,000 lbs

20/40 Arizona sand in 1087 bbls 60Q 20 lb linear gel at **40 BPM**. If surface pressures allow, increase injection rate accordingly. Average surface treating pressure will be 5,757 psi. Perforation and tubing friction is estimated to be 4,346 psi. Treat per the following schedule:


Stage	Downhole Foam Volume (gals)	Clean Gel Volume (gals)	N2 Volume (MSCF)	Sand Volume (lbs)
Pad	7,500	3,000	80.1	---
1.0 ppg	6,000	2,400	64.0	6,000
2.0 ppg	10,500	4,200	111.9	21,000
3.0 ppg	13,667	5,467	145.6	41,000
4.0 ppg	18,000	3,200	85.2	32,000
Flush (100' above top perf)	1,907	572	23.8	0
<b>Totals</b>	<b>47,574</b>	<b>27,862</b>	<b>511</b>	<b>100,000</b>

Cut rate throughout flush as pressure allows to prevent overdisplacing. Record ISIP, 5 minute, 10 minute and 15 minute SIP. RD stimulation company.

9. Flow well back after 30 minutes to 1 hour through a choke manifold. Open well to pit, starting with a 10/64" choke. If minimal sand is being produced, change to a larger choke size (16/64"). If choke plugs off, shut well in and remove obstruction from choke and return to flowback. Continue increasing choke size and cleaning well up until fluid returns are negligible.
10. When pressures allow, release packers and TOO. LD 3-1/2" frac string, 3-1/2" X 2-7/8" N-80 crossover, 2-7/8" frac string, top 5-1/2" straddle packer, 2-7/8" frac string and bottom 5-1/2" straddle packer.
11. TIH with 4-3/4" bit on 2-3/8" tubing and clean out to PBTD at 5348'. Alternate between natural flow and blow stages for clean up. **When water rates are 3 BPH, obtain a Mesaverde pitot gauge.** TOO.
12. TIH with an expendable check, one 2-3/8" joint, standard SN and remaining 2-3/8" tubing. Broach tubing while running in hole. CO with air/mist to PBTD again, if necessary. Land tubing at 5293'. ND BOP. NU WH. Pump off expendable check. RDMO. Contact Production Operations for well tie-in.

Recommended:   
Production Engineer

Approved:  12/10/98  
Drilling Superintendent

Approved:  12/1/98  
Team Leader

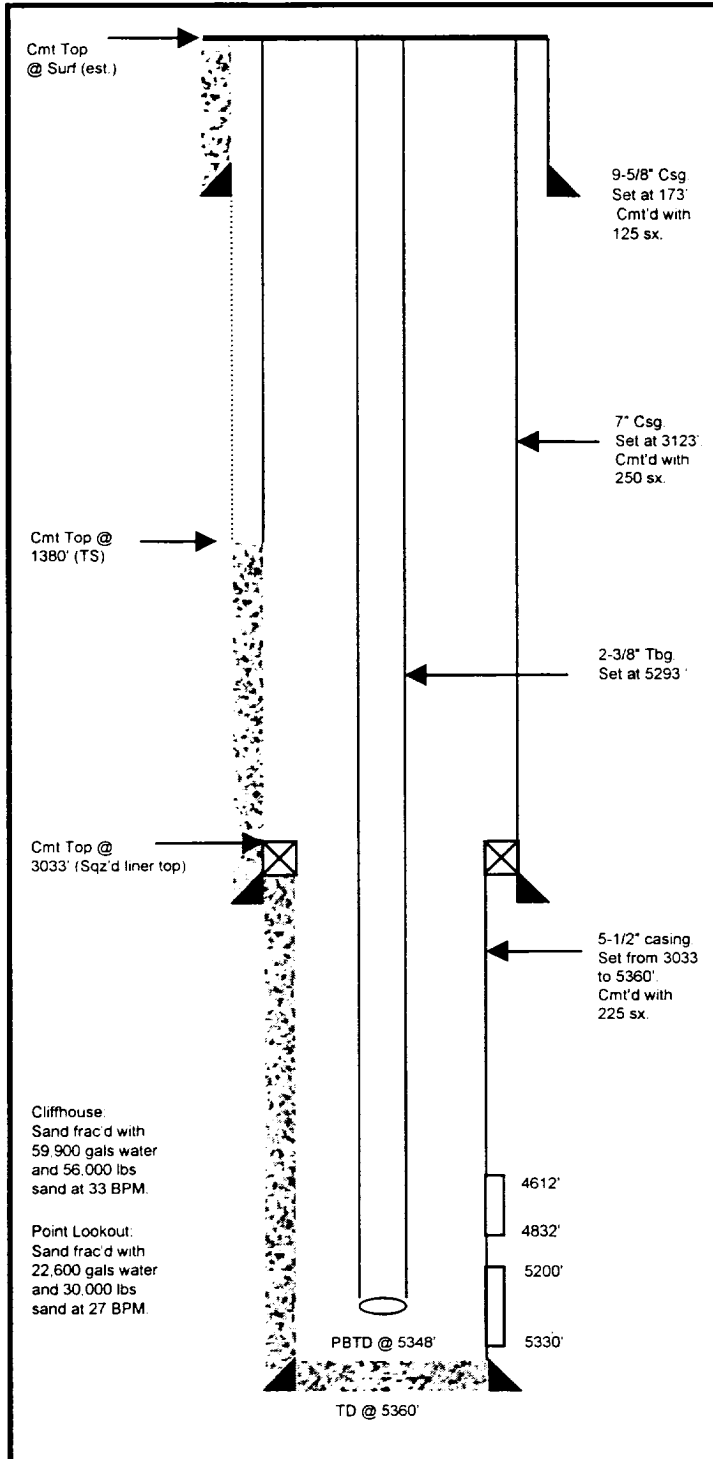
Contact:

Jennifer Dobson      599-4026 (work)      564-3244 (home)      324-2461 (pager)

# San Juan 29-7 Unit #46

Unit G, Section 6, T29N, R7W  
Rio Arriba County, NM  
Lat: 36° - 45.4257'/Long: 107° - 36.5259'

## Current Schematic



## Proposed Schematic

