

UNITED STATES  
DEPARTMENT OF THE INTERIOR  
GEOLOGICAL SURVEY

## APPLICATION FOR PERMIT TO DRILL, DEEPEN, OR PLUG BACK

## 1a. TYPE OF WORK

DRILL ☒DEEPEN ☐PLUG BACK ☐

## b. TYPE OF WELL

OIL  
WELL ☐GAS  
WELL ☒

OTHER

SINGLE  
ZONE ☒MULTIPLE  
ZONE ☐

## 2. NAME OF OPERATOR

El Paso Natural Gas Company

## 3. ADDRESS OF OPERATOR

PO Box 990, Farmington, NM 87401

## 4. LOCATION OF WELL (Report location clearly and in accordance with any State requirements.\*)

At surface

890'S, 1630'E

At proposed prod. zone

## 14. DISTANCE IN MILES AND DIRECTION FROM NEAREST TOWN OR POST OFFICE\*

Approx. 20 miles E of Blanco, NM

## 15. DISTANCE FROM PROPOSED\*

LOCATION TO NEAREST  
PROPERTY OR LEASE LINE, FT.  
(Also to nearest drlg. unit line, if any)

890'

## 16. NO. OF ACRES IN LEASE

Unit

18. DISTANCE FROM PROPOSED LOCATION\*  
TO NEAREST WELL, DRILLING, COMPLETED,  
OR APPLIED FOR, ON THIS LEASE, FT.

3502'

## 19. PROPOSED DEPTH

5670'

17. NO. OF ACRES ASSIGNED  
TO THIS WELL

E/ 317.38

## 20. ROTARY OR CABLE TOOLS

Rotary

## 21. ELEVATIONS (Show whether DF, RT, GR, etc.)

6192'GL

## 22. APPROX. DATE WORK WILL START\*

## 23.

## PROPOSED CASING AND CEMENTING PROGRAM

SIZE OF HOLE	SIZE OF CASING	WEIGHT PER FOOT	SETTING DEPTH	QUANTITY OF CEMENT
13 3/4"	9 5/8"	32.3#	200'	224 cu.ft. to circulate
8 3/4"	7"	20.0#	3350'	294 cu.ft. to cover Ojo Alamo
6 1/4"	4 1/2" liner	10.5#	3200-5670'	430 cu.ft. to fill to 3200'

Selectively perforate and sandwater fracture the Mesa Verde formation.

A 3000 psi WP and 6000 psi test double gate preventer equipped with blind and pipe rams will be used for blow out prevention on this well.

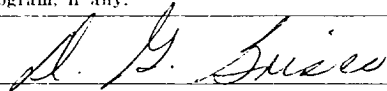
This gas is dedicated.

The E/2 of Section 4 is dedicated to this well.

IN ABOVE SPACE DESCRIBE PROPOSED PROGRAM: If proposal is to deepen or plug back, give data on present productive zone and proposed new productive zone. If proposal is to drill or deepen directionally, give pertinent data on subsurface locations and measured and true vertical depths. Give blowout preventer program, if any.

24.

SIGNED



TITLE

Drilling Clerk

DATE

1-12-78

(This space for Federal or State office use)

PERMIT NO.

APPROVAL DATE

APPROVED BY

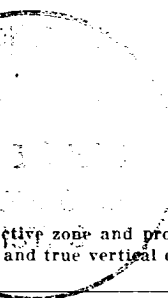
TITLE

DATE

CONDITIONS OF APPROVAL, IF ANY:



\*See Instructions On Reverse Side

U. S. GEOLOGICAL SURVEY  
DENVER, COLO.

NEW MEXICO OIL CONSERVATION COMMISSION  
WELL LOCATION AND ACREAGE DEDICATION PLAT

Form C-122  
Supersedes C-128  
Effective 1-1-65

All distances must be from the outer boundaries of the Section.

Operator <b>EL PASO NATURAL GAS COMPANY</b>		Lease <b>SAN JUAN 29-7 UNIT (SF-078919)</b>		Well No. <b>82A</b>
Unit Letter <b>0</b>	Section <b>4</b>	Township <b>29-N</b>	Range <b>7-W</b>	County <b>RIO ARriba</b>
Actual Footage Location of Well: <b>890</b> feet from the <b>SOUTH</b> line and <b>1630</b> feet from the <b>EAST</b> line				
Ground Level Elev. <b>6192</b>	Producing Formation <b>MESA VERDE</b>	Pool <b>BLANCO MESA VERDE</b> ✓	Dedicated Acreage: <b>317.38</b> ✓ Acres	

1. Outline the acreage dedicated to the subject well by colored pencil or hachure marks on the plat below.
2. If more than one lease is dedicated to the well, outline each and identify the ownership thereof (both as to working interest and royalty).
3. If more than one lease of different ownership is dedicated to the well, have the interests of all owners been consolidated by communitization, unitization, force-pooling, etc?

☒ Yes    ☐ No    If answer is "yes," type of consolidation Unitization

If answer is "no," list the owners and tract descriptions which have actually been consolidated. (Use reverse side of this form if necessary.) \_\_\_\_\_

No allowable will be assigned to the well until all interests have been consolidated (by communitization, unitization, forced-pooling, or otherwise) or until a non-standard unit, eliminating such interests, has been approved by the Commission.

	<b>CERTIFICATION</b>	
	<p>I hereby certify that the information contained herein is true and complete to the best of my knowledge and belief.</p> <p><i>D. G. Duico</i></p> <p>Name _____</p> <p><b>Drilling Clerk</b></p> <p>Position _____</p> <p><b>El Paso Natural Gas</b></p> <p>Company _____</p> <p><b>January 12, 1978</b></p> <p>Date _____</p>	
	<p>I hereby certify that the well location shown on this plat was plotted from field notes of actual surveys made by me or under my supervision, and that the same is true and correct to the best of my knowledge and belief.</p> <p align="center">1760</p> <p>Date Surveyed <b>OCTOBER 10, 1977</b></p> <p>Registered Professional Engineer and/or Land Surveyor</p> <p><i>David Wilson</i></p> <p>Certificate No. <b>1760</b></p>	
	<p>0 330 660 990 1320 1650 1980 2310 2640 2970 3300 3630 3960 4290 4620 4950 5280 5610 5940 6270 6600</p>	

Multi-Point Surface Use Plan

San Juan 29-7 Unit #82A

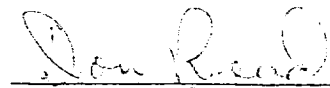
1. Existing Road - Please refer to Map No. 1 which shows the existing roads. New roads which will be required have been marked on this map. All existing and new roads will be properly maintained during the duration of this project.
2. Planned Access Roads - Please refer to Map No. 1. The grade of the access roads will be consistent with that of the local terrain. The road surface will not exceed twenty feet (20') in width. Upon completion of the project, the access road will be adequately drained to control soil erosion. Drainage facilities may include ditches, water bars, culverts or any other measure deemed necessary by trained Company personnel to insure proper drainage. Gates and/or cattleguards will be installed if necessary.
3. Location of Existing Wells - Please refer to Map No. 2
4. Location of Tank Batteries, Production Facilities, and Production Gathering and Service Lines - Please refer to Maps No. 1 and No. 2. Map No. 2 shows the existing gas gathering lines. Map No. 1 shows the existing roads and new proposed access roads. All known production facilities are shown on these two maps.
5. Location and Type of Water Supply - Water for the proposed project will be obtained from a water hole located at the San Juan 29-6 Water Well.
6. Source of Construction Materials - No additional materials will be required to build either the access road or the proposed location.

7. Methods of Handling Waste Materials - All garbage and trash materials will be put into a burn pit shown on the attached Location Plat No. 1. When clean-up operations are begun on the proposed project, the burn pit with its refuse will be buried to a depth of at least three feet (3'). A latrine, the location of which is also shown on Plat No. 1 will be provided for human waste. If large amounts of liquids are left in the reserve pit after completion of the project, the pit will be fenced until the liquids have had adequate time to dry. The location clean-up will not take place until such time as the reserve pit can be properly covered over to prevent run-off from carrying any of these materials into the watershed. No earthen pit will be located on natural drainages; all earthen pits will be so constructed as to prevent leakage from occurring.
8. Ancillary Facilities - No camps or airstrips will be associated with this project.
9. Wellsite Layout - Please refer to the attached Plat No. 1.
10. Plans for Restoration of the Surface - After completion of the proposed project, the location will be cleaned and leveled. The location will be left in such a condition that will enable reseeding operations to be carried out. Seed Mixture #2 will be used. The reseeding operation will be performed during the time period set forth by the regulatory body. The location production equipment will be painted green (Federal Standard #595-34127)
11. Other Information - The terrain is rolling hills and sandstone ledges covered with pinon and cedar. Cattle graze the proposed project site.

12. Operator's Representative - W. D. Dawson, Post Office Box 990,  
Farmington, New Mexico 87401

13. Certification - I hereby certify that I, or persons under my direct supervision, have inspected the proposed drillsite and access route; that I am familiar with the conditions which presently exist; that the statements made in this plan are, to the best of my knowledge, true and correct; and, that the work associated with the operations proposed herein will be performed by El Paso Natural Gas Company and its contractors and sub-contractors in conformity with this plan and the terms and conditions under which it is approved.

January 12, 1978



---

D. R. Read  
Division Drilling Engineer

DRR:pb

January 12, 1978

Operations Plan  
San Juan 29-7 Unit #82A

I. Location: 890'S, 1630'E, Section 4, T-29-N, R-7-W, Rio Arriba County, NM

Field: Blanco Mesa Verde

Elevation: 6192'GR

II. Geology:

A. Formation Tops:	Surface	San Jose	Lewis	3149'
	Ojo Alamo	2044'	Mesa Verde	4709'
	Kirtland	2211'	Menefee	4882'
	Fruitland	2706'	Point Lookout	5220'
	Pic.Cliffs	3024'	Total Depth	5670'

B. Logging Program: GR-Ind. and GR-Density at Total Depth.

C. Coring Program: none

D. Natural Gauges: 4699', 4872', 5210' and at Total Depth.

Also gauge any noticeable increase in gas. Record all gauges in daily drilling report and on morning report.

III. Drilling:

A. Mud Program: mud from surface to 3350'. Gas from intermediate casing to Total Depth.

IV. Materials:

A. Casing Program:	<u>Hole Size</u>	<u>Depth</u>	<u>Casing Size</u>	<u>Wt.&amp;Grade</u>
	13 3/4"	200'	9 5/8"	32.3# H-40
	8 3/4"	3350'	7"	20.0# K-55
	6 1/4"	3200-5670'	4 1/2"	10.5# K-55

B. Float Equipment: 9 5/8" surface casing - Larkin guide shoe (fig. 102)

7" intermediate casing - Dowell guide shoe (fig. 50101) and Dowell self-fill insert float valve (fig. 53003), 5 B&W stabilizers (Prod. No. 637085) every other joint above shoe. Run float two joints above shoe.

4 1/2" liner - 4 1/2" liner hanger with neoprene packoff. Larkin geyser shoe (fig. 222) and Larkin flapper type float collar (fig. 404 M&F).

C. Tubing: 5670' of 2 3/8", 4.7#, J-55 8rd EUE tubing with a common pump seating nipple above perforated pup joint with bull plugged full joint for mud anchor on bottom.

D. Wellhead Equipment: 10" 900 x 9 5/8" casing head. 10" 900 x 6" 900 xmas tree.

Operations Plan - San Juan 29-7 Unit #82A

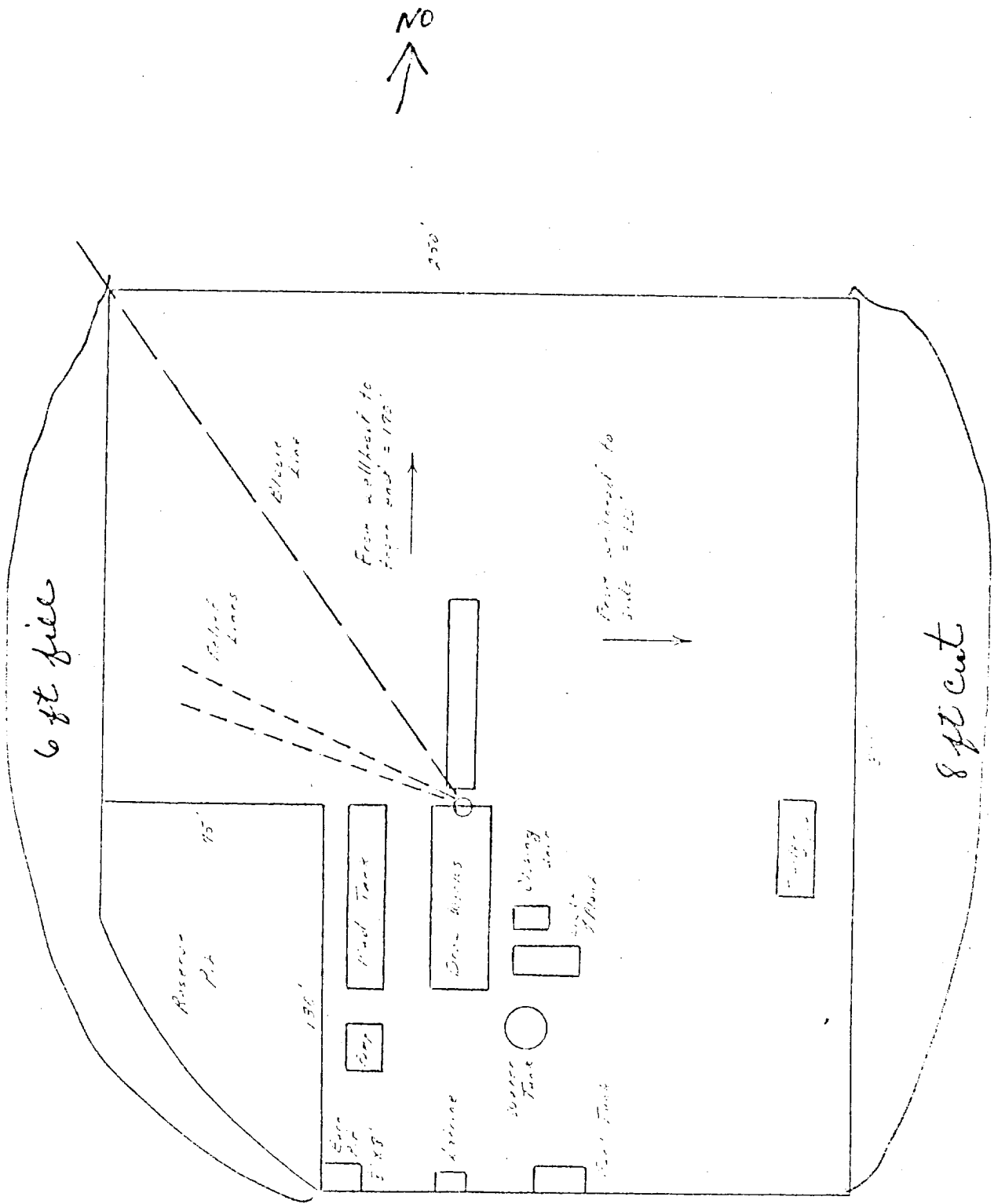
V. Cementing:

9 5/8" surface casing - use 190 sks. of Class "B" cement with 1/4# gel-flake per sack and 3% calcium chloride (224 cu.ft. of slurry, 100% excess to circulate to surface). WOC 12 hours. Test casing to 600#/30 minutes.

7" intermediate casing - use 108 sks. of 65/35 Class "B" Poz with 6% gel and 2% calcium chloride (8.3 gallons of water per sack) followed by 100 sks. of Class "B" with 2% calcium chloride (294 cu.ft. of slurry, 50% excess to cover Ojo Alamo). Run temperature survey at 8 hours. WOC 12 hours. Test casing to 1200#/30 minutes.

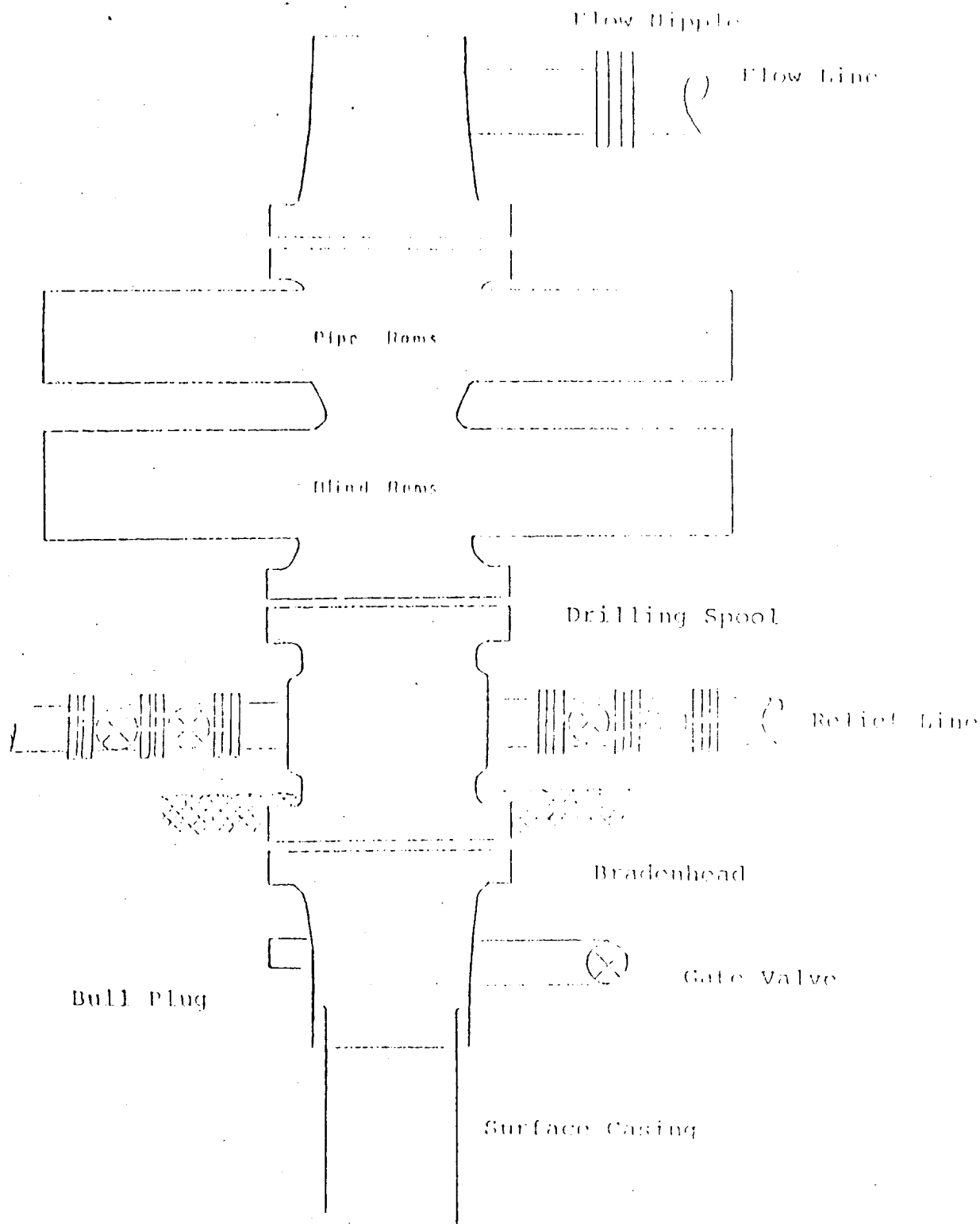
4 1/2" liner - precede cement with 20 barrels of gel water (2 sks. gel) Cement with 239 sks. of Class "B" cement with 4% gel, 1/4 cu.ft. of fine gilsonite per sack and 0.6% Halad-9 (430 cu.ft. of slurry, 70% excess to circulate liner). WOC 18 hours.

El Paso Natural Gas Company  
Typical location plot for these North and South wells





Typical B.O.P. Installation  
for Mesa Verde Well

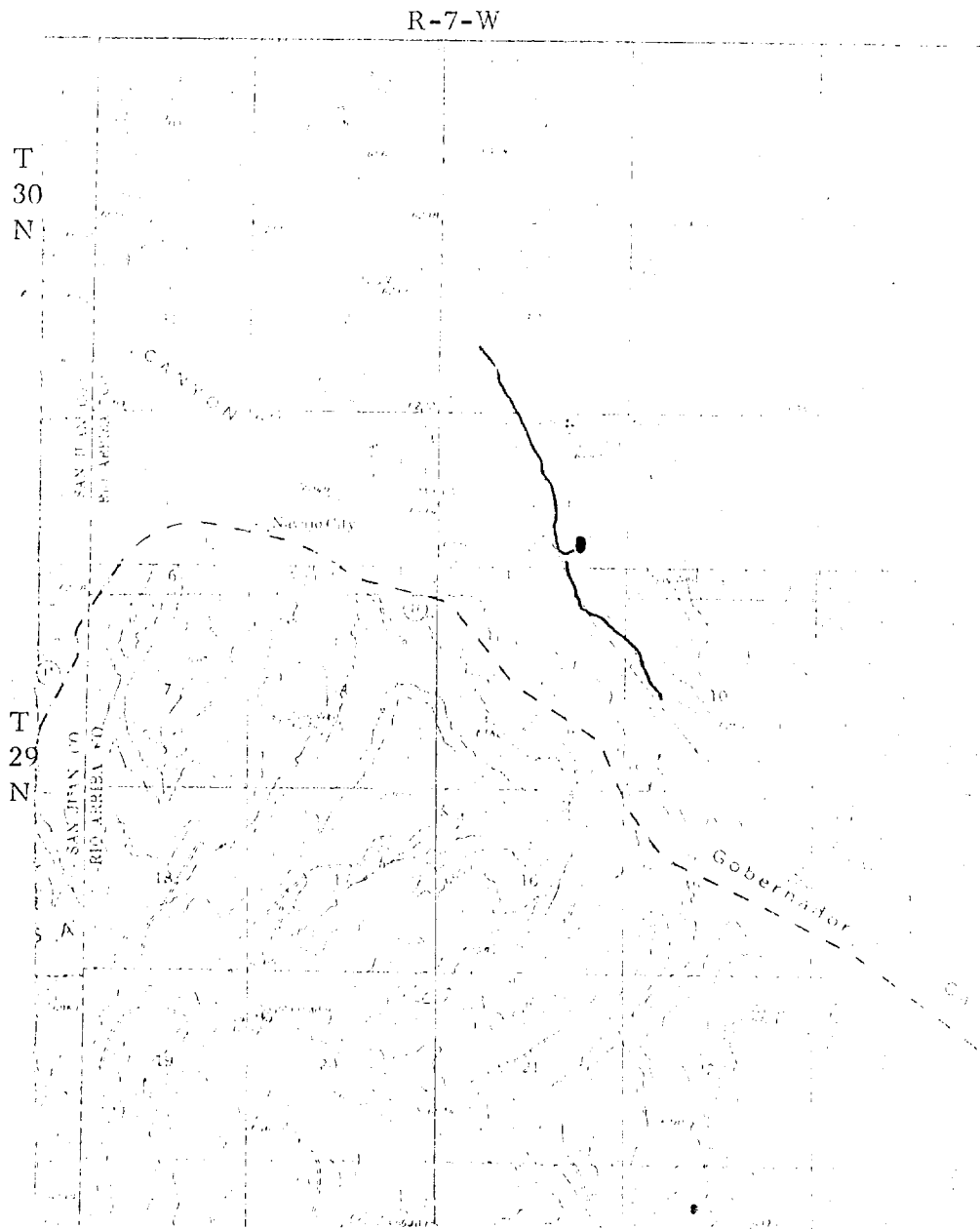


Series 900 Double Gate BOP, rated  
at 3000 psi Working Pressure  
When gas drilling operations begin a Shaffer type 50  
or equivalent rotating head is installed on top of the  
flow nipple and the flow line is converted into a blowie line

# El Paso Natural Gas Company

San Juan 29-7 Unit #82A

NWSE 4-29-7



MAP #1

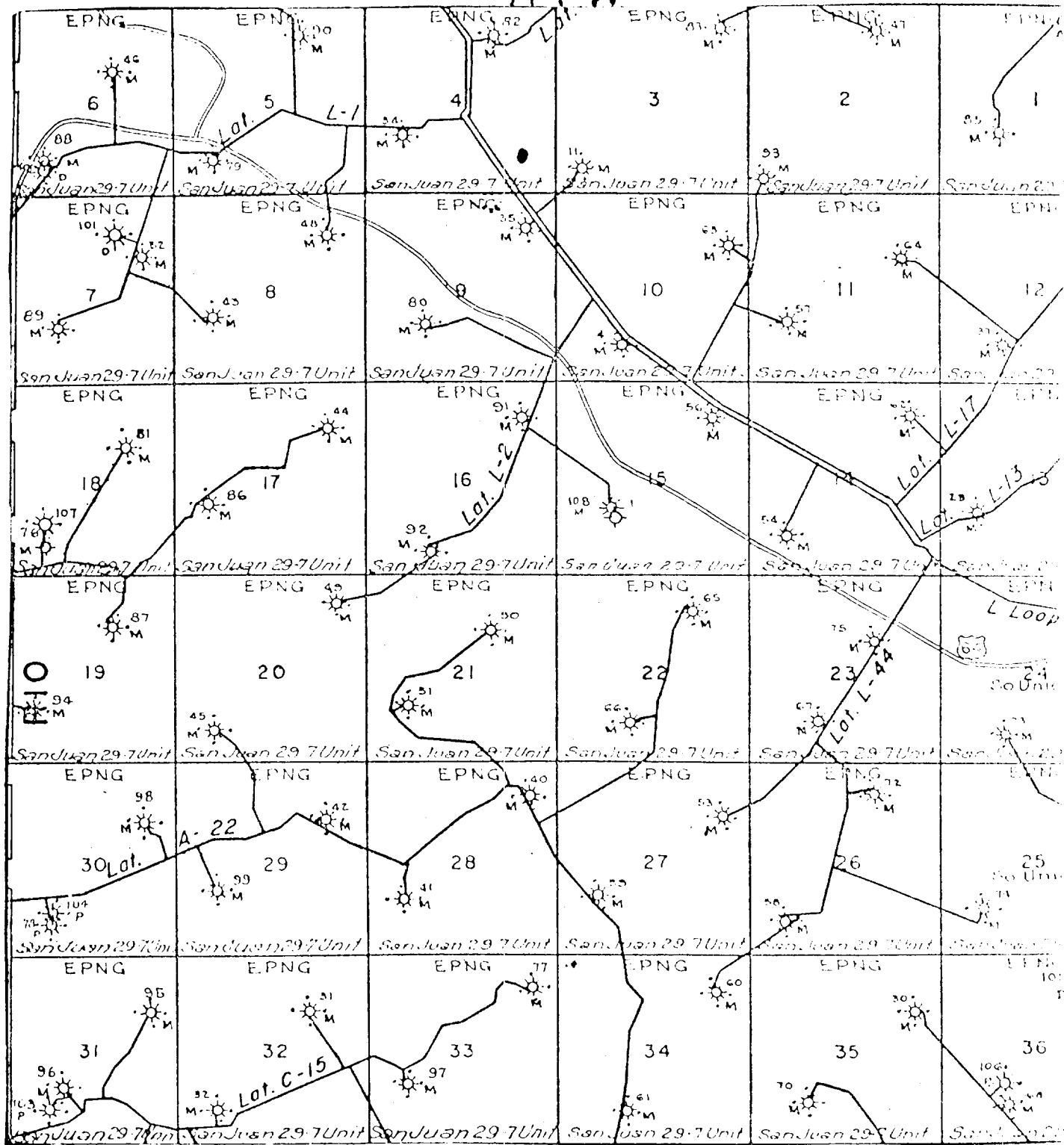
## LEGEND OF RIGHT-OF-WAY

EXISTING ROADS	—————
EXISTING FENCELINE	-+ + -+
EXISTING ROAD FENCELINE	-+ + -+ .
PROPOSED ROADS	—————
PROPOSED FENCELINE	-+ + -+
PROPOSED ROAD FENCELINE	-+ + -+ .

El Paso Natural Gas Company  
San Juan 29-7 Unit #82A  
NWSE 4-29-7

R7W

T29N



MAP #2

Proposed Location