

UNITED STATES
DEPARTMENT OF THE INTERIOR
GEOLOGICAL SURVEY

30-039-21631
5. LEASE DESIGNATION AND SERIAL NO.
SF 078424-A
6. IF INDIAN, ALLOTTEE OR TRIBE NAME
7. UNIT AGREEMENT NAME
San Juan 29-7 Unit
8. FARM OR LEASE NAME
San Juan 29-7 Unit
9. WELL NO.
71A
10. FIELD AND POOL, OR WILDCAT
Blanco Mesa Verde
11. SEC., T., R., M., OR BLK.
AND SURVEY OR AREA
Sec. 24, T-29-N, R-7-W
NMPM
12. COUNTY OR PARISH
Rio Arriba
13. STATE
NM

APPLICATION FOR PERMIT TO DRILL, DEEPEN, OR PLUG BACK

1a. TYPE OF WORK
DRILL DEEPEN PLUG BACK

b. TYPE OF WELL
OIL WELL GAS WELL OTHER
SINGLE ZONE MULTIPLE ZONE

2. NAME OF OPERATOR
El Paso Natural Gas Company

3. ADDRESS OF OPERATOR
PO Box 990, Farmington, NM 87401

4. LOCATION OF WELL (Report location clearly and in accordance with any State requirements.)*
At surface 2170'S, 790'E
I At proposed prod. zone

14. DISTANCE IN MILES AND DIRECTION FROM NEAREST TOWN OR POST OFFICE*
approx. 20 miles E of Blanco, NM

15. DISTANCE FROM PROPOSED* LOCATION TO NEAREST PROPERTY OR LEASE LINE, FT. (Also to nearest drlg. unit line, if any)
790'

16. NO. OF ACRES IN LEASE
Unit

17. NO. OF ACRES ASSIGNED TO THIS WELL
5/320.00

18. DISTANCE FROM PROPOSED LOCATION* TO NEAREST WELL, DRILLING, COMPLETED, OR APPLIED FOR, ON THIS LEASE, FT.
2000'

19. PROPOSED DEPTH
5720'

20. ROTARY OR CABLE TOOLS
Rotary

21. ELEVATIONS (Show whether DF, RT, GR, etc.)
6247' GL

22. APPROX. DATE WORK WILL START*

23. PROPOSED CASING AND CEMENTING PROGRAM

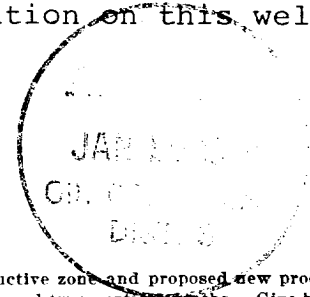
SIZE OF HOLE	SIZE OF CASING	WEIGHT PER FOOT	SETTING DEPTH	QUANTITY OF CEMENT
13 3/4"	9 5/8"	32.3#	200'	224 cu.ft. to circulate
8 3/4"	7"	20.0#	3430'	276 cu.ft. to cover Ojo Alamo
6 1/4"	4 1/2" liner	10.5#	3280-5720'	426 cu.ft. to fill to 3280'

Selectively perforate and sandwater fracture the Mesa Verde formation.

A 3000 psi WP and 6000 psi test double gate preventer equipped with blind and pipe rams will be used for blow out prevention on this well.

This gas is dedicated.

The E/2 of Section 24 is dedicated to this well.



IN ABOVE SPACE DESCRIBE PROPOSED PROGRAM: If proposal is to deepen or plug back, give data on present productive zone and proposed new productive zone. If proposal is to drill or deepen directionally, give pertinent data on subsurface locations and measured and true vertical depths. Give blowout preventer program, if any.

24. SIGNED A. G. Duesen TITLE Drilling Clerk DATE 1-12-78

(This space for Federal or State office use)

PERMIT NO. _____ APPROVAL DATE _____

APPROVED BY _____ TITLE _____ DATE _____

CONDITIONS OF APPROVAL, IF ANY:

Alcal

t

*See Instructions On Reverse Side

RECEIVED

JAN 16 1978

U. S. GEOLOGICAL SURVEY
DENVER, COLO.

Held @ 100 ...

NEW MEXICO OIL CONSERVATION COMMISSION
WELL LOCATION AND ACREAGE DEDICATION PLAT

Form C-102
Supersedes C-128
Effective 1-1-65

All distances must be from the outer boundaries of the Section.

Operator EL PASO NATURAL GAS COMPANY		Lease SAN JUAN 29-7 UNIT (SF-078424-A)		Well No. 71A
Unit Letter I	Section 24	Township 29-N	Range 7-W	County RIO ARRIBA

Actual Footage Location of Well:
2170 feet from the **SOUTH** line and **790** feet from the **EAST** line

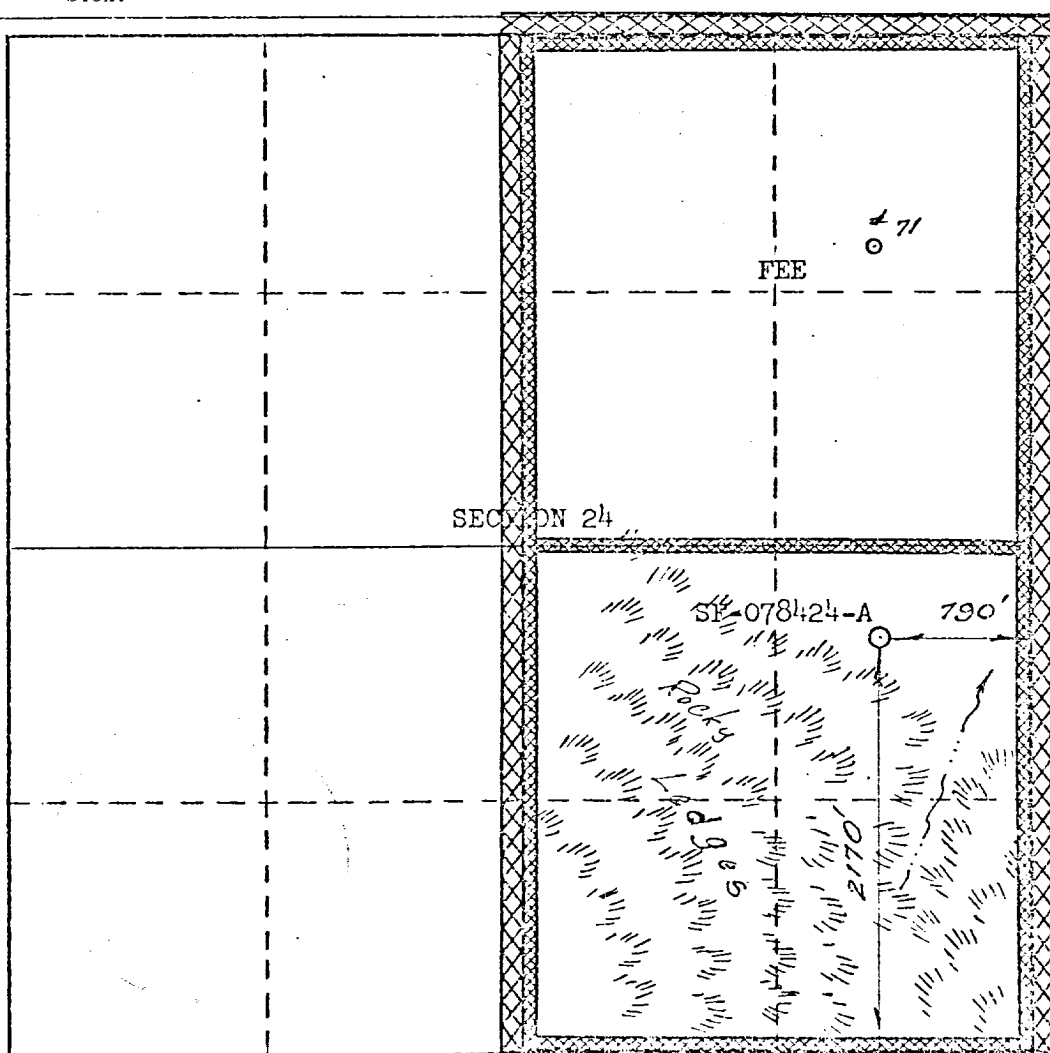
Ground Level Elev. 6247	Producing Formation MESA VERDE	Pool BLANCO MESA VERDE ✓	Dedicated Acreage: 320.00 ✓ Acres
-----------------------------------	--	------------------------------------	---

1. Outline the acreage dedicated to the subject well by colored pencil or hachure marks on the plat below.
2. If more than one lease is dedicated to the well, outline each and identify the ownership thereof (both as to working interest and royalty).
3. If more than one lease of different ownership is dedicated to the well, have the interests of all owners been consolidated by communitization, unitization, force-pooling, etc?

Yes No If answer is "yes," type of consolidation Unitization

If answer is "no," list the owners and tract descriptions which have actually been consolidated. (Use reverse side of this form if necessary.) _____

No allowable will be assigned to the well until all interests have been consolidated (by communitization, unitization, forced-pooling, or otherwise) or until a non-standard unit, eliminating such interests, has been approved by the Commission.



CERTIFICATION

I hereby certify that the information contained herein is true and complete to the best of my knowledge and belief.

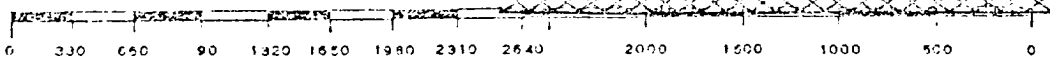
N. G. Busico

Name
Drilling Clerk
 Position
El Paso Natural Gas
 Company
January 12, 1978
 Date

I hereby certify that the well location shown on this plat was plotted from field notes of actual surveys made by me or under my supervision, and that the same is true and correct to the best of my knowledge and belief.

Date Surveyed
OCTOBER 10, 1977
 Registered Professional Engineer
 and/or Land Surveyor

David Wilson
 Certificate No. **1760**



Multi-Point Surface Use Plan
San Juan 29-7 Unit #71A


1. Existing Road - Please refer to Map No. 1 which shows the existing roads. New roads which will be required have been marked on this map. All existing and new roads will be properly maintained during the duration of this project.
2. Planned Access Roads - Please refer to Map No. 1. The grade of the access roads will be consistent with that of the local terrain. The road surface will not exceed twenty feet (20') in width. Upon completion of the project, the access road will be adequately drained to control soil erosion. Drainage facilities may include ditches, water bars, culverts or any other measure deemed necessary by trained Company personnel to insure proper drainage. Gates and/or cattleguards will be installed if necessary.
3. Location of Existing Wells - Please refer to Map No. 2
4. Location of Tank Batteries, Production Facilities, and Production Gathering and Service Lines - Please refer to Maps No. 1 and No. 2. Map No. 2 shows the existing gas gathering lines. Map No. 1 shows the existing roads and new proposed access roads. All known production facilities are shown on these two maps.
5. Location and Type of Water Supply - Water for the proposed project will be obtained from a water hole located at San Juan 29-6 Water Well.
6. Source of Construction Materials - No additional materials will be required to build either the access road or the proposed location.

7. Methods of Handling Waste Materials - All garbage and trash materials will be put into a burn pit shown on the attached Location Plat No. 1. When clean-up operations are begun on the proposed project, the burn pit with its refuse will be buried to a depth of at least three feet (3'). A latrine, the location of which is also shown on Plat No. 1 will be provided for human waste. If large amounts of liquids are left in the reserve pit after completion of the project, the pit will be fenced until the liquids have had adequate time to dry. The location clean-up will not take place until such time as the reserve pit can be properly covered over to prevent run-off from carrying any of these materials into the watershed. No earthen pit will be located on natural drainages; all earthen pits will be so constructed as to prevent leakage from occurring.
8. Ancillary Facilities - No camps or airstrips will be associated with this project.
9. Wellsite Layout - Please refer to the attached Plat No. 1.
10. Plans for Restoration of the Surface - After completion of the proposed project, the location will be cleaned and leveled. The location will be left in such a condition that will enable reseeding operations to be carried out. Seed Mixture #1 will be used. The reseeding operation will be performed during the time period set forth by the regulatory body. The location production equipment will be painted green (Federal Standard #595-34127)
11. Other Information - The terrain is sage brush flats and high sandstone hills with sage brush. Cattle graze the proposed project site.

12. Operator's Representative - W. D. Dawson, Post Office Box 990,
Farmington, New Mexico 87401

13. Certification - I hereby certify that I, or persons under my direct supervision, have inspected the proposed drillsite and access route; that I am familiar with the conditions which presently exist; that the statements made in this plan are, to the best of my knowledge, true and correct; and, that the work associated with the operations proposed herein will be performed by El Paso Natural Gas Company and its contractors and sub-contractors in conformity with this plan and the terms and conditions under which it is approved.

January 12, 1978



D. R. Read
Division Drilling Engineer

DRR:pb

January 12, 1978

Operations Plan
San Juan 29-7 Unit #71A

I. Location: 2170'S, 790'E, Section 24, T-29-N, R-7-W, Rio Arriba County, NM

Field: Blanco Mesa Verde Elevation: 6247'GL

II. Geology:

A. Formation Tops:	Surface	San Jose	Lewis	3230'
	Ojo Alamo	2206'	Mesa Verde	4854'
	Kirtland	2392'	Menefee	4952'
	Fruitland	2844'	Point Lookout	5267'
	Pic.Cliffs	3099'	Total Depth	5720'

B. Logging Program: GR-Ind. and GR-Density at Total Depth.

C. Coring Program: none

D. Natural Gauges: 4844', 4942', 5257' and at Total Depth.
Also gauge any noticeable increase in gas. Record all gauges in daily drilling report and on morning report.

III. Drilling:

A. Mud Program: mud from surface to 3430'. Gas from intermediate casing to Total Depth.

IV. Materials:

A. Casing Program:	<u>Hole Size</u>	<u>Depth</u>	<u>Casing Size</u>	<u>Wt.&Grade</u>
	13 3/4"	200'	9 5/8"	32.3# H-40
	8 3/4"	3430'	7"	20.0# K-55
	6 1/4"	3280-5720'	4 1/2"	10.5# K-55

B. Float Equipment: 9 5/8" surface casing - Larkin guide shoe (fig. 102)

7" intermediate casing - Dowell guide shoe (fig. 50101) and Dowell self-fill insert float valve (fig. 53003), 5 B&W stabilizers (Prod. No. 637085) every other joint above shoe. Run float two joints above shoe.

4 1/2" liner - 4 1/2" liner hanger with neoprene packoff. Larkin geyser shoe (fig. 222) and Larkin flapper type float collar (fig. 404 M&F).

C. Tubing: 5720' of 2 3/8", 4.7#, J-55 8rd EUE tubing with a common pump seating nipple above perforated pup joint with bull plugged full joint for mud anchor on bottom.

D. Wellhead Equipment: 10" 900 x 9 5/8" casing head. 10" 900 x 6" 900 xmas tree.

Operations Plan - San Juan 29-7 Unit #71A

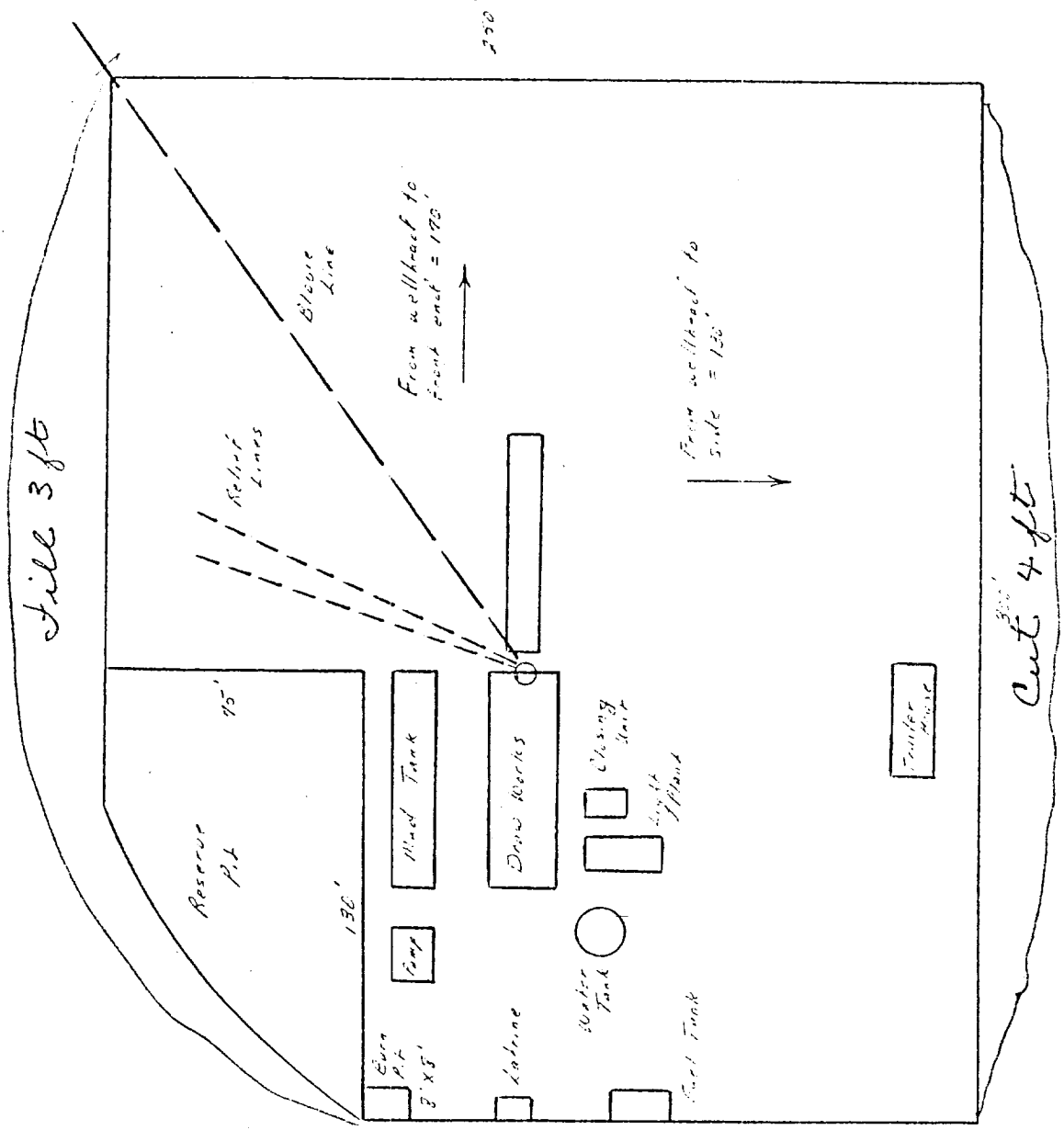
V. Cementing:

9 5/8" surface casing - use 190 sks. of Class "B" cement with 1/4# gel-flake per sack and 3% calcium chloride (224 cu.ft. of slurry, 100% excess to circulate to surface). WOC 12 hours. Test casing to 600#/30 minutes.

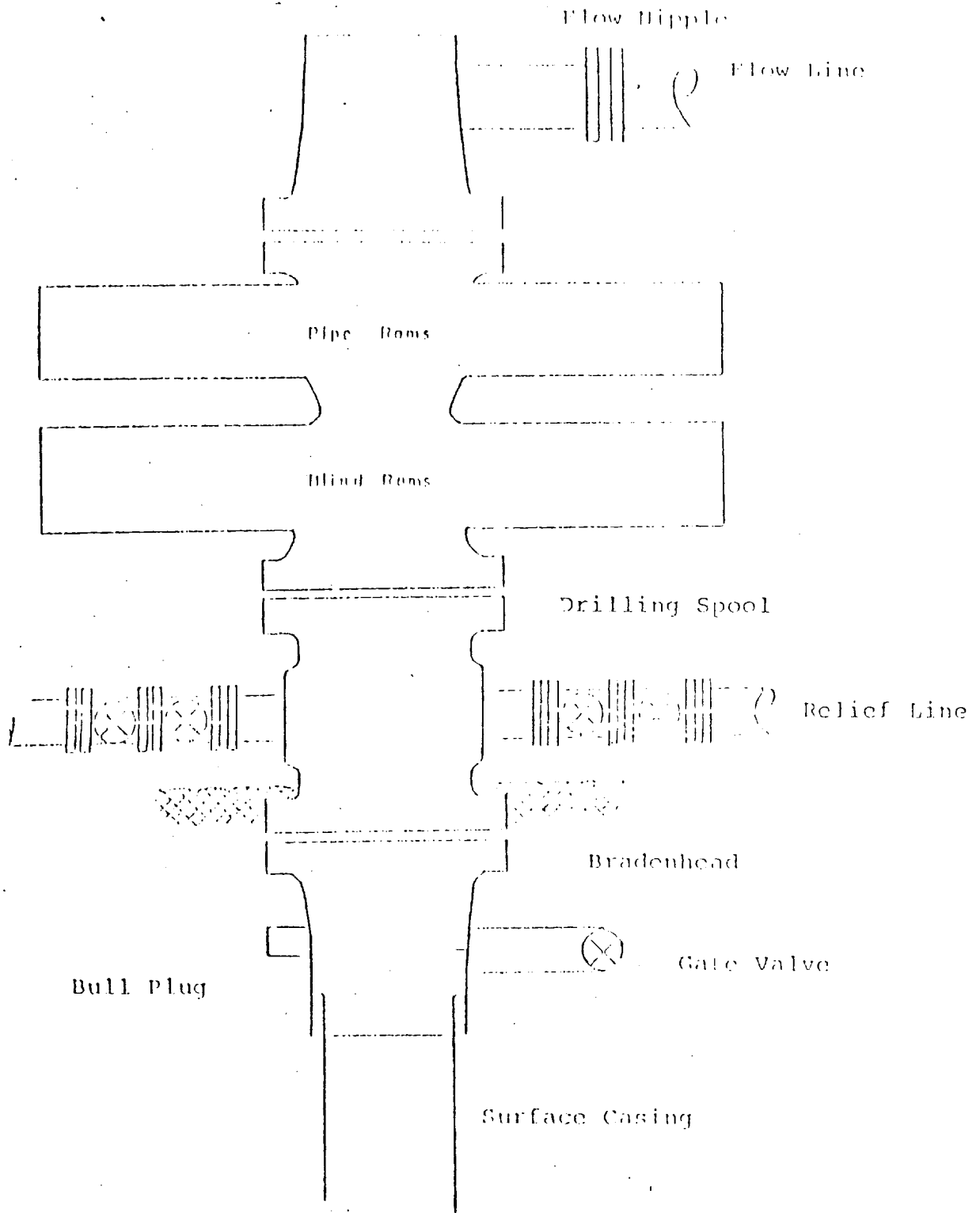
7" intermediate casing - use 98 sks. of 65/35 Class "B" Poz with 6% gel and 2% calcium chloride (8.3 gallons of water per sack) followed by 100 sks. of Class "B" with 2% calcium chloride (276 cu.ft. of slurry, 50% excess to cover Ojo Alamo). Run temperature survey at 8 hours. WOC 12 hours. Test casing to 1200#/30 minutes.

4 1/2" liner - precede cement with 20 barrels of gel water (2 sks. gel) Cement with 242 sks. of Class "B" cement with 4% gel, 1/4 cu.ft. of fine gilsonite per sack and 0.6% Halad-9 (426 cu.ft. of slurry, 70% excess to circulate liner). WOC 18 hours.

El Paso Natural Gas Company
Typical location plot for mesa WAD and Dakota wells



Typical B.O.P. Installation
For Mega Verde Well



Series 900 Double Gate BOP, rated
at 3000 psi Working Pressure
When gas drilling operations begin a Shaffer type 50
or equivalent rotating head is installed on top of the
flow nipple and the flow line is converted into a blowie line

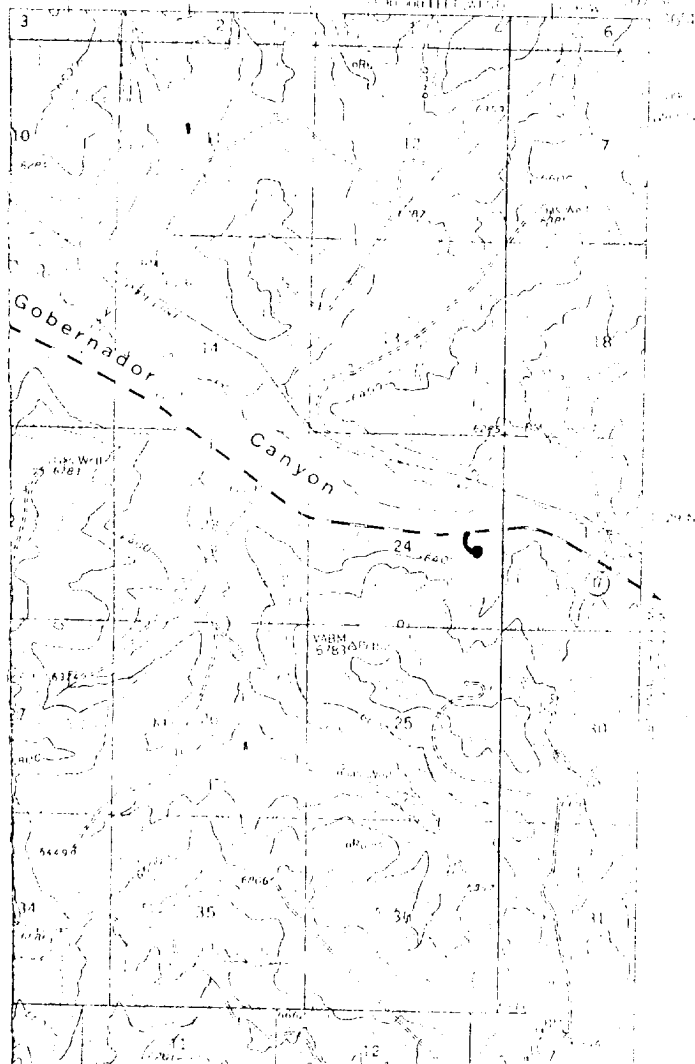
EL PASO NATURAL GAS COMPANY
 San Juan 29-7 Unit #71A
 NESE 24-29-7

R-7-W

R-6-W

COULD PASS QUADRANGLE
 NEW MEXICO
 15 MINUTE SERIES (TOPOGRAPHIC)

T
29
N



T
28
N

MAP #1

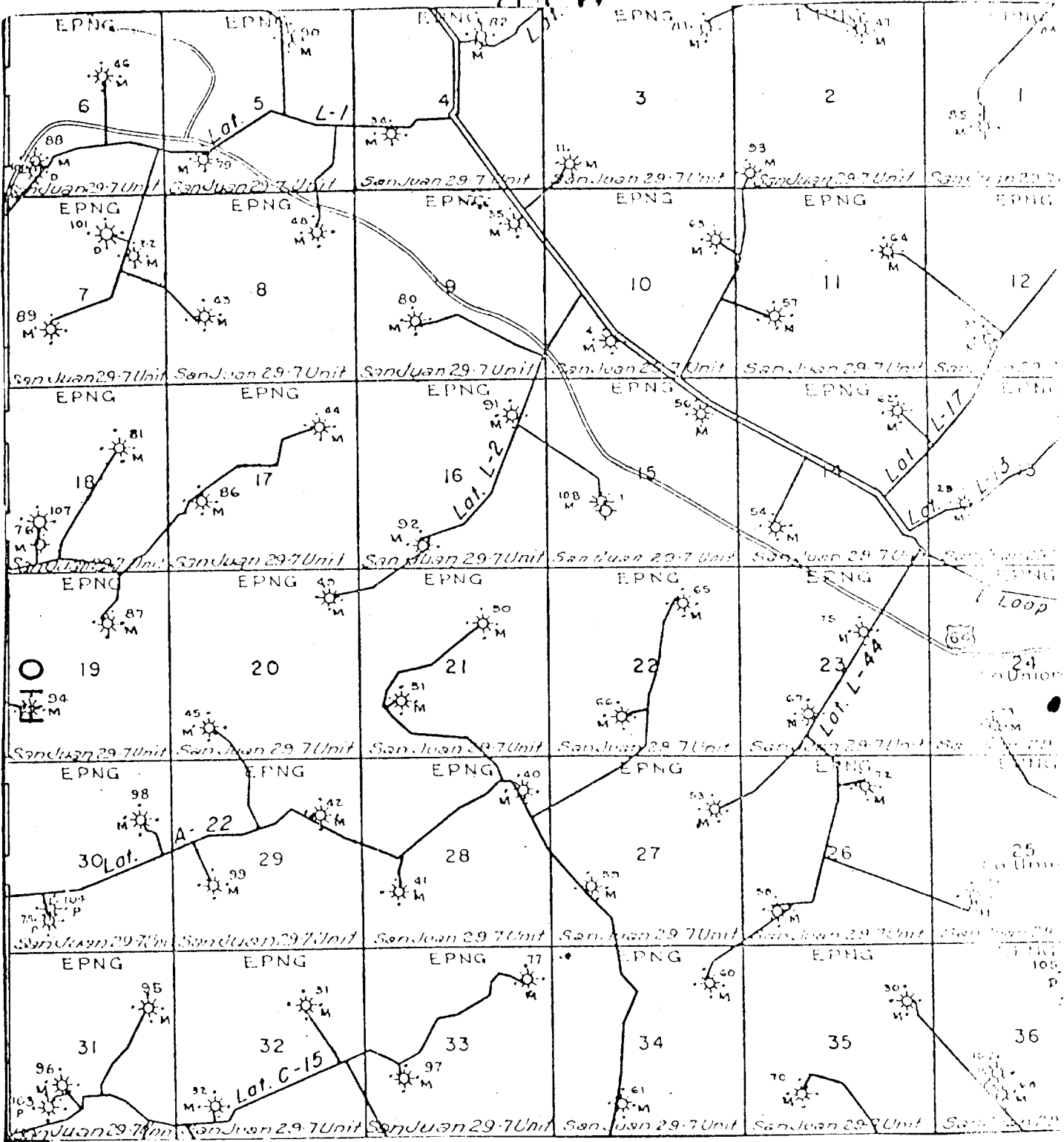
LEGEND OF DRAFT-OF-PLAN

- EXISTING ROADS
- EXISTING FENCELINES
- EXISTING ROAD & FENCELINE
- PROPOSED ROADS
- PROPOSED FENCELINE
- PROPOSED ROAD & FENCELINE

EL PASO NATURAL GAS COMPANY
San Juan 29-7 Unit #71A
NESE 24-29-7

R7W

T
29
N



MAP #2

Proposed Location ●