

UNITED STATES
DEPARTMENT OF THE INTERIOR
GEOLOGICAL SURVEY

APPLICATION FOR PERMIT TO DRILL, DEEPEN, OR PLUG BACK

1a. TYPE OF WORK
DRILL ☒ DEEPEN ☐ PLUG BACK ☐

b. TYPE OF WELL
OIL WELL ☐ GAS WELL ☒ OTHER ☐ SINGLE ZONE ☐ MULTIPLE ZONE ☒

2. NAME OF OPERATOR
El Paso Natural Gas Company

3. ADDRESS OF OPERATOR
PO Box 289, Farmington, NM 87401

4. LOCATION OF WELL (Report location clearly and in accordance with any State requirements.)
At surface 1780'N, 980'W
At proposed prod. zone same

14. DISTANCE IN MILES AND DIRECTION FROM NEAREST TOWN OR POST OFFICE*
1.5 miles west of Navajo City, NM

15. DISTANCE FROM PROPOSED LOCATION TO NEAREST PROPERTY OR LEASE LINE, FT. (Also to nearest drlg. unit line, if any) 980'

16. NO. OF ACRES IN LEASE 2400? unit

17. NO. OF ACRES ASSIGNED TO THIS WELL 320.00

18. DISTANCE FROM PROPOSED LOCATION TO NEAREST WELL, DRILLING, COMPLETED, OR APPLIED FOR, ON THIS LEASE, FT. 1500'

19. PROPOSED DEPTH 8065'

20. ROTARY OR CABLE TOOLS Rotary

21. ELEVATIONS (Show whether DF, RT, GR, etc.) 6770' GL

22. APPROX. DATE WORK WILL START*

5. LEASE DESIGNATION AND SERIAL NO.
SF 078423

6. IF INDIAN, ALLOTTEE OR TRIBE NAME

7. UNIT AGREEMENT NAME
San Juan 29-7 Unit

8. FARM OR LEASE NAME
San Juan 29-7 Unit

9. WELL NO.
86A (MD)

10. FIELD AND POOL, OR WILDCAT
Blanco Mesa Verde Basin Dakota

11. SEC., T., R., M., OR BLK. AND SURVEY OR AREA
Sec. 17, T-29-N, R-7-W NMMPM

12. COUNTY OR PARISH
Rio Arriba

13. STATE
NM

PROPOSED CASING AND CEMENTING PROGRAM

SIZE OF HOLE	SIZE OF CASING	WEIGHT PER FOOT	SETTING DEPTH	QUANTITY OF CEMENT
17 1/2"	13 3/8"	48.0#	200'	278 cu.ft. circ. to surface
12 1/2"	9 5/8"	40.0#	3820'	740 cu.ft. cover Ojo Alamo
8 3/4"	7"	20.0#	3670-6320'	681 cu.ft. to circ. liner
6 1/4"	4 1/2"	10.5#&11.6#	6170-8065'	336 cu.ft. to circ. liner

Selectively perforate and sandwater fracture the Mesa Verde and Dakota formations.

A 3000 psi WP and 6000 psi test double gate preventer equipped with blind and pipe rams will be used for blow out prevention on this well.

This gas is dedicated.

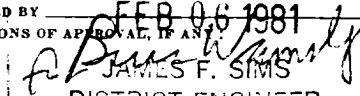
The W/2 of Section 17 is dedicated to this well.

IN ABOVE SPACE DESCRIBE PROPOSED PROGRAM: If proposal is to deepen or plug back, give data on present productive zone and proposed new productive zone. If proposal is to drill or deepen directionally, give pertinent data on subsurface locations and measured and true vertical depths. Give blowout preventer program, if any.

24.  Drilling Clerk 9-29-80

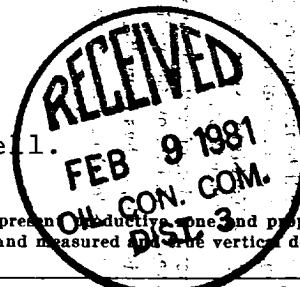
(This space for Federal or State office use)

PERMIT NO. AS AMENDED APPROVAL DATE

APPROVED BY  TITLE DATE

DISTRICT ENGINEER

*See Instructions On Reverse Side



OIL CONSERVATION DIVISION

STATE OF NEW MEXICO
ENERGY AND MINERALS DEPARTMENTP. O. BOX 2088
SANTA FE, NEW MEXICO 87501Form C-102
Revised 10-1-78

All distances must be from the outer boundaries of the Section.

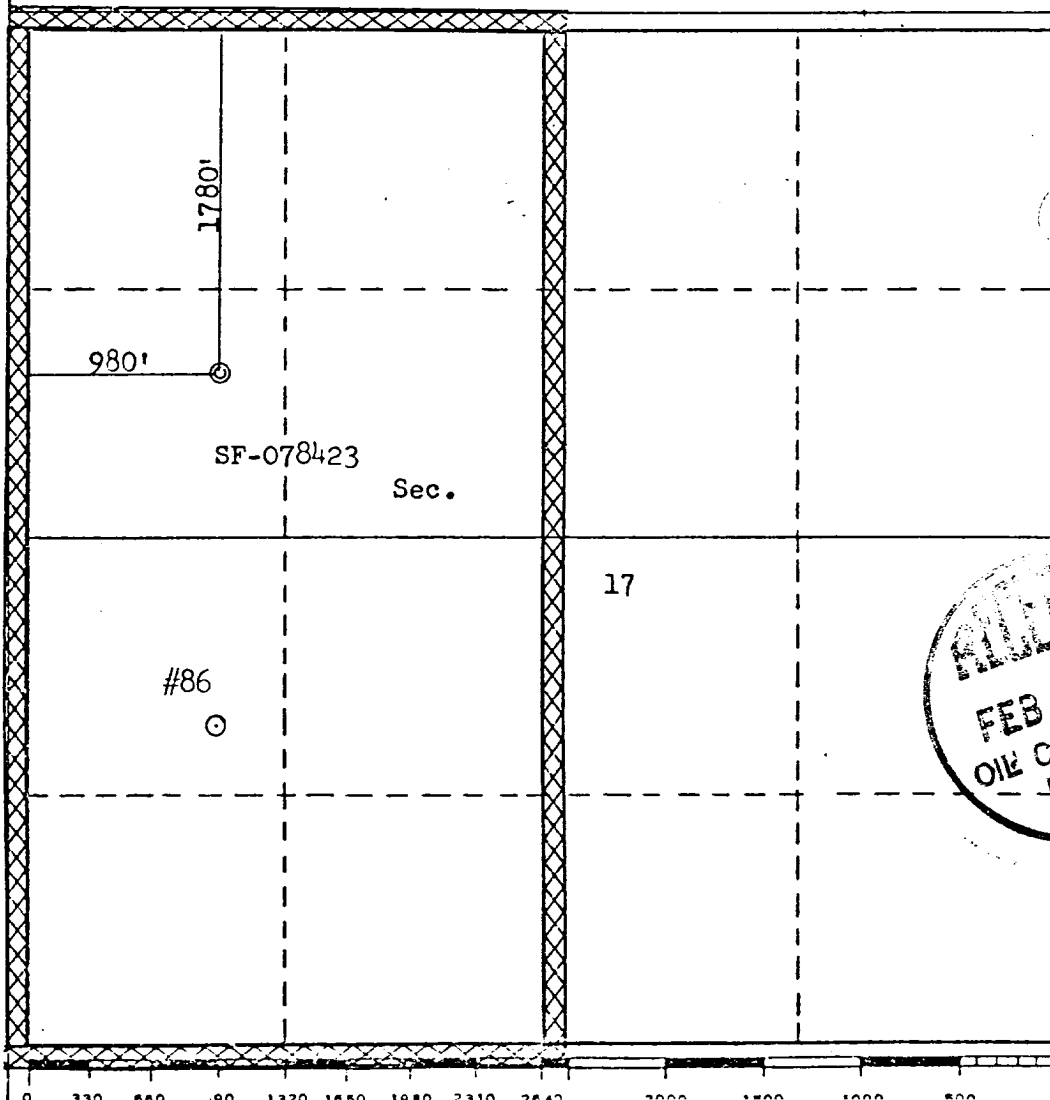
Operator EL PASO NATURAL GAS COMPANY			Lease SAN JUAN 29-7 UNIT (SF-078423)		Well No. 86A
Unit Letter E	Section 17	Township 29N	Range 7W	County Rio Arriba	
Actual Footage Location of Well: 1780 feet from the North line and 980 feet from the West line					
Ground Level Elev. 6770	Producing Formation MESA VERDE - DAKOTA		Pool BLANCO MESA VERDE BASIN DAKOTA		Dedicated Acreage: 320.0 & 320.0 Acres

1. Outline the acreage dedicated to the subject well by colored pencil or hachure marks on the plat below.
2. If more than one lease is dedicated to the well, outline each and identify the ownership thereof (both as to working interest and royalty).
3. If more than one lease of different ownership is dedicated to the well, have the interests of all owners been consolidated by communitization, unitization, force-pooling, etc?

X ☐ Yes ☐ No If answer is "yes," type of consolidation Unitization

If answer is "no," list the owners and tract descriptions which have actually been consolidated. (Use reverse side of this form if necessary.)

No allowable will be assigned to the well until all interests have been consolidated (by communitization, unitization, forced-pooling, or otherwise) or until a non-standard unit, eliminating such interests, has been approved by the Commission.



CERTIFICATION

I hereby certify that the information contained herein is true and complete to the best of my knowledge and belief.

Name
Nancy Bradford
Drilling Clerk

Position
El Paso Natural Gas Co.

Company
September 29, 1980

Date

I hereby certify that the well location shown on this plat was plotted from field of actual surveys made by me or under my supervision, and that the same are true and correct to the best of my knowledge and belief.

Date Surveyed
August 9, 1979

Registered Professional Engineer
and/or Land Surveyor

Fred S. Kerr Jr.
Fred S. Kerr Jr.

Certificate No. *3950*

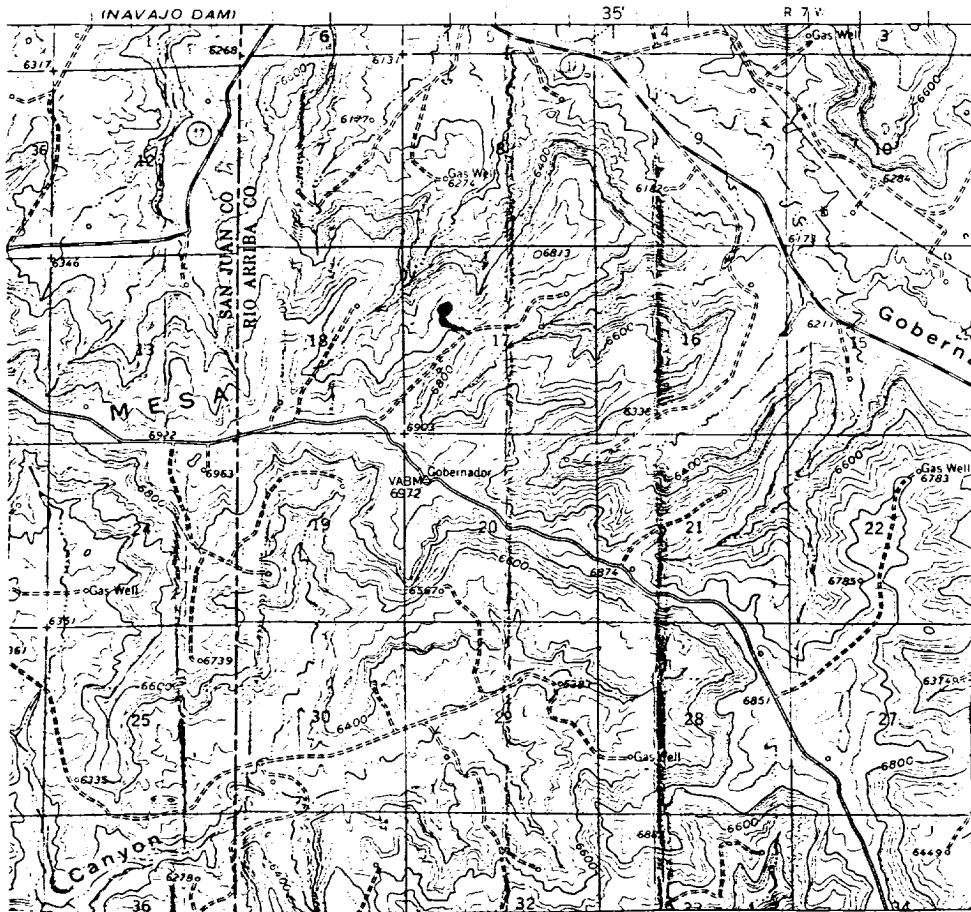
3950

El Paso Natural Gas Company
San Juan 29-7 Unit #86A
NW 17-29-7

R-8-W

R-7-W

T
29
N



MAP 1

LEGEND OF RIGHT-OF-WAYS

EXISTING ROADS

EXISTING PIPELINES

EXISTING ROAD & PIPELINE

PROPOSED ROADS

PROPOSED PIPELINES

PROPOSED ROAD & PIPELINE

