

UNITED STATES
DEPARTMENT OF THE INTERIOR
GEOLOGICAL SURVEY

APPLICATION FOR PERMIT TO DRILL, DEEPEN, OR PLUG BACK

1a. TYPE OF WORK

DRILL ☒DEEPEN ☐PLUG BACK ☐

b. TYPE OF WELL

OIL
WELL ☐GAS
WELL ☒

OTHER

SINGLE
ZONE ☐MULTIPLE
ZONE ☒

2. NAME OF OPERATOR

El Paso Natural Gas Company

3. ADDRESS OF OPERATOR

PO Box 289, Farmington, NM 87401

4. LOCATION OF WELL (Report location clearly and in accordance with any State requirements.)*

At surface

1570'N, 930'W

At proposed prod. zone

same

14. DISTANCE IN MILES AND DIRECTION FROM NEAREST TOWN OR POST OFFICE*

2.5 miles west of Navajo City, NM

15. DISTANCE FROM PROPOSED*

LOCATION TO NEAREST

PROPERTY OR LEASE LINE, FT.

(Also to nearest drlg. unit line, if any)

930'

18. DISTANCE FROM PROPOSED LOCATION*

TO NEAREST WELL, DRILLING, COMPLETED,
OR APPLIED FOR, ON THIS LEASE, FT.

2000'

16. NO. OF ACRES IN LEASE

2140? unit

19. PROPOSED DEPTH

7915'

17. NO. OF ACRES ASSIGNED
TO THIS WELL

W/320.00 & W/320

20. ROTARY OR CABLE TOOLS

Rotary

21. ELEVATIONS (Show whether DF, RT, GR, etc.)

6638'GL

22. APPROX. DATE WORK WILL START*

23.

PROPOSED CASING AND CEMENTING PROGRAM

SIZE OF HOLE	SIZE OF CASING	WEIGHT PER FOOT	SETTING DEPTH	QUANTITY OF CEMENT
17 1/2"	13 3/8"	48.0#	200'	278 cu.ft.circ.to surface
12 1/2"	9 5/8"	40.0#	3750'	761 cu.ft.cover Ojo Alamo
8 3/4"	7"	20.0#	3600-6190'	667 cu.ft.to circ. liner
6 1/4"	4 1/2"	10.5#&11.6#	6040-7915'	336 cu.ft.to circ. liner

Selectively perforate and sandwater fracture the Mesa Verde and Dakota formations.

A 3000 psi WP and 6000 psi test double gate preventer equipped with blind and pipe rams will be used for blow out prevention on this well.

This gas is dedicated.

The W/2 of Section 21 is dedicated to this well.

IN ABOVE SPACE DESCRIBE PROPOSED PROGRAM: If proposal is to deepen or plug back, give data on present productive zone and proposed new productive zone. If proposal is to drill or deepen directionally, give pertinent data on subsurface locations and measured and true vertical depths. Give blowout preventer program, if any.

24.

SIGNED

TITLE

Drilling Clerk

DATE

9-29-80

(This space for Federal or State office use)

PERMIT NO.

AS AMENDED

APPROVAL DATE

APPROVED BY

CONDITIONS OF APPROVAL

FEB 06 1981
JAMES F. SIMS
DISTRICT ENGINEER

TITLE

DATE

*See Instructions On Reverse Side



All distances must be from the outer boundaries of the Section.

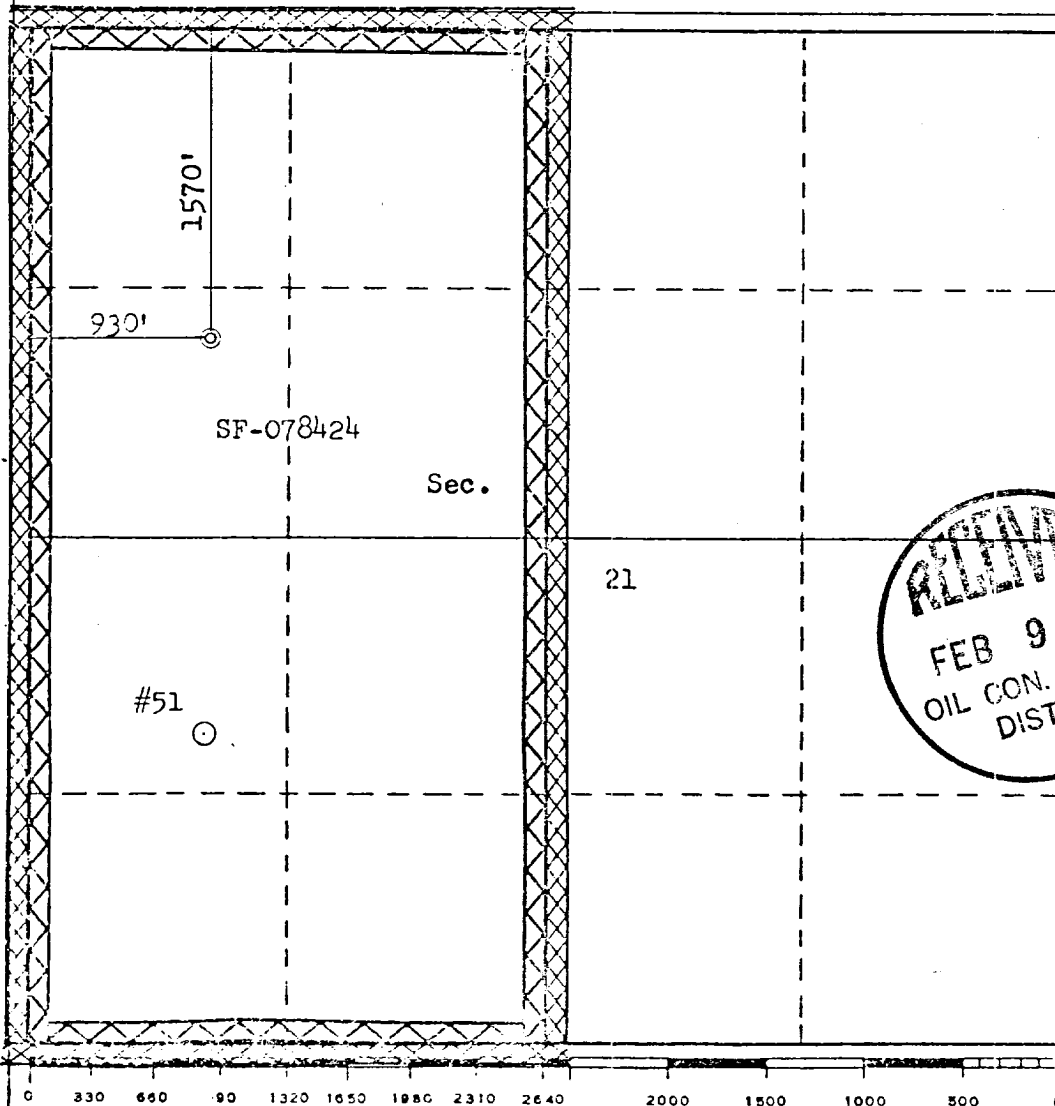
Operator EL PASO NATURAL GAS COMPANY			Lease SAN JUAN 29-7 UNIT (SF-078424)		Well No. 51A
Unit Letter E	Section 21	Township 29N	Range 7W	County Rio Arriba	
Actual Footage Location of Well: 1570 feet from the North line and 930 feet from the West line					
Ground Level Elev. 6638	Producing Formation Mesa Verde - Dakota		Pool Blanco Mesa Verde Basin Dakota		Dedicated Acreage: 320.0 & 320.0 Acres

1. Outline the acreage dedicated to the subject well by colored pencil or hachure marks on the plat below.
2. If more than one lease is dedicated to the well, outline each and identify the ownership thereof (both as to working interest and royalty).
3. If more than one lease of different ownership is dedicated to the well, have the interests of all owners been consolidated by communitization, unitization, force-pooling, etc?

X ☐ Yes ☐ No If answer is "yes," type of consolidation Unitization

If answer is "no," list the owners and tract descriptions which have actually been consolidated. (Use reverse side of this form if necessary.)

No allowable will be assigned to the well until all interests have been consolidated (by communitization, unitization, forced-pooling, or otherwise) or until a non-standard unit, eliminating such interests, has been approved by the Commission.



CERTIFICATION

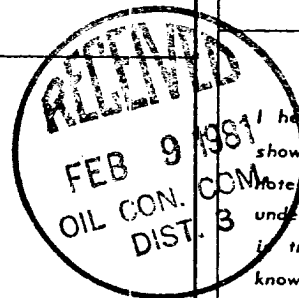
I hereby certify that the information contained herein is true and complete to the best of my knowledge and belief.

Name
Drilling Clerk

Position
El Paso Natural Gas Co.

Company
September 29, 1980

Date



I hereby certify that the well location shown on this plat was plotted from field notes of actual surveys made by me or under my supervision, and that the same is true and correct to the best of my knowledge and belief.

Date Surveyed

August 1980

Registered Professional Engineer and/or Land Surveyor

Fred. B. Kerr Jr.

Certificate No. **3950** Mexico

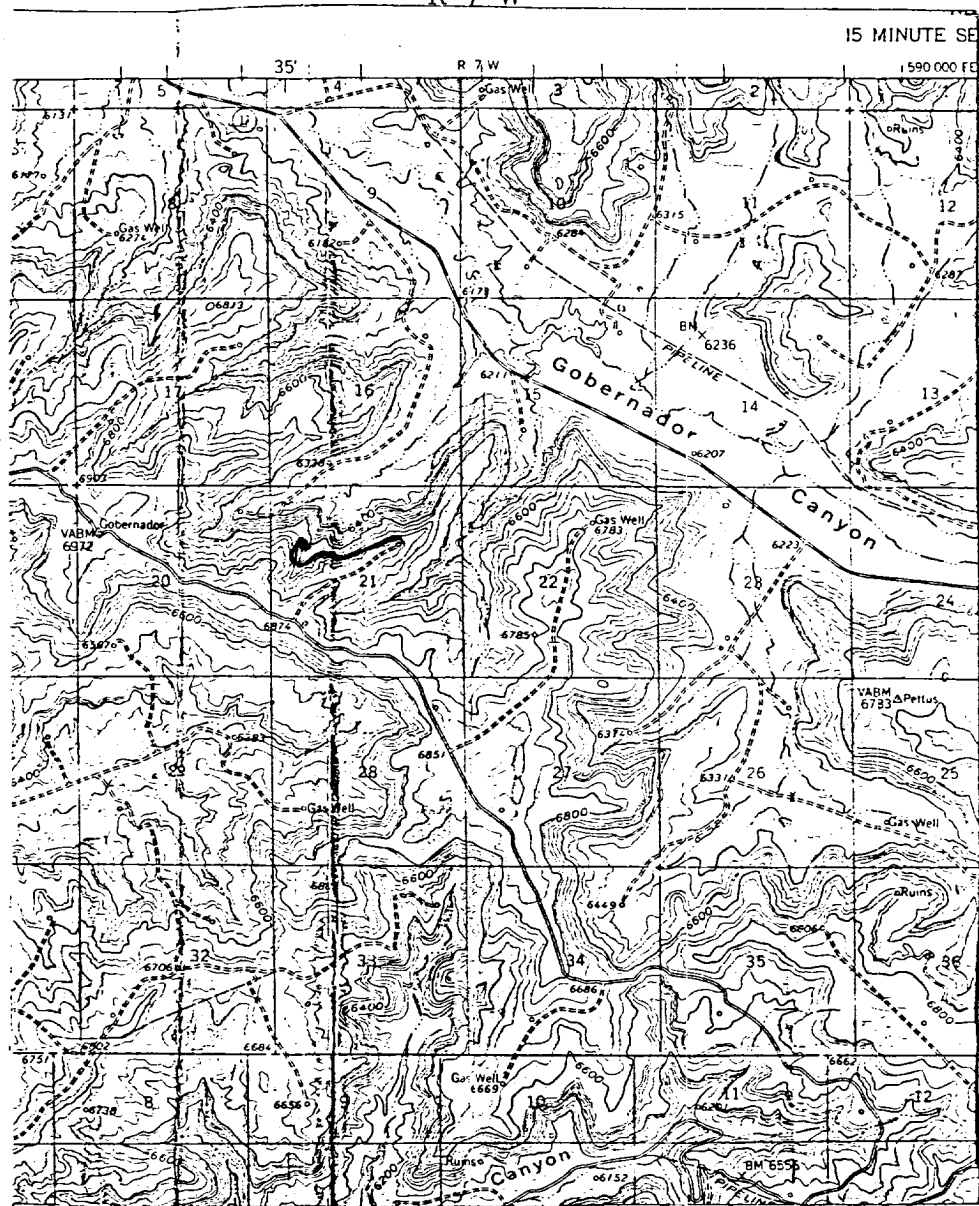
R-7-W

15 MINUTE SE

1 590 000 FE

T
-29
N

T
28
N



MAP 1

EXISTING ROADS

EXISTING PIPELINES

EXISTING ROAD & PI

PROPOSED ROADS

PROPOSED PIPELINES

PROPOSED ROAD & PIPELINE

フ