

UNITED STATES  
DEPARTMENT OF THE INTERIOR  
GEOLOGICAL SURVEY

30-039-23074

## APPLICATION FOR PERMIT TO DRILL, DEEPEN, OR PLUG BACK

## 1a. TYPE OF WORK

DRILL ☒DEEPEN ☐PLUG BACK ☐

## b. TYPE OF WELL

OIL  
WELL ☐GAS  
WELL ☒

OTHER

SINGLE  
ZONE ☒MULTIPLE  
ZONE ☐

## 2. NAME OF OPERATOR

El Paso Natural Gas Company

## 3. ADDRESS OF OPERATOR

PO Box 289, Farmington, NM 87401

## 4. LOCATION OF WELL (Report location clearly and in accordance with any State requirements\*)

At surface

1100'N, 1475'W

At proposed prod. zone

1260

## 14. DISTANCE IN MILES AND DIRECTION FROM NEAREST TOWN OR POST OFFICE\*

6 miles - Navajo City, NM

15. DISTANCE FROM PROPOSED\*  
LOCATION TO NEAREST  
PROPERTY OR LEASE LINE, FT.  
(Also to nearest drig. unit line, if any)

1100'

18. DISTANCE FROM PROPOSED LOCATION\*  
TO NEAREST WELL, DRILLING, COMPLETED,  
OR APPLIED FOR, ON THIS LEASE, FT.

120'

16. NO. OF ACRES IN LEASE  
unit17. NO. OF ACRES ASSIGNED  
TO THIS WELL

125.19

## 19. PROPOSED DEPTH

3065'

## 20. ROTARY OR CABLE TOOLS

rotary

## 21. ELEVATIONS (Show whether DF, RT, GR, etc.)

-6306' GL G288

## 22. APPROX. DATE WORK WILL START\*

## 23.

## PROPOSED CASING AND CEMENTING PROGRAM

SIZE OF HOLE	SIZE OF CASING	WEIGHT PER FOOT	SETTING DEPTH	QUANTITY OF CEMENT
12 1/4"	8 5/8"	24.0#	120'	106 cu.ft.circ.to surf.
6 3/4"	2 7/8"	6.4#	3065'	508 cu.ft.cover Ojo Alamo

Selectively perforate and sandwater fracture the Pictured Cliffs formation.

A 3000 psi WP and 6000 psi test double gate preventor equipped with blind and pipe rams will be used for blow out prevention on this well.

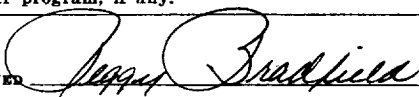
This gas is dedicated.

The NW/4 of Section 31 is dedicated to this well.

IN ABOVE SPACE DESCRIBE PROPOSED PROGRAM: If proposal is to deepen or plug back, give data on present productive zone and proposed new productive zone. If proposal is to drill or deepen directionally, give pertinent data on subsurface locations and measured and true vertical depths. Give blowout preventer program, if any.

## 24.

SIGNED



TITLE Drilling Clerk

DATE August 3, 1982

(This space for Federal or State office use)

PERMIT NO.

APPROVAL DATE

APPROVED BY

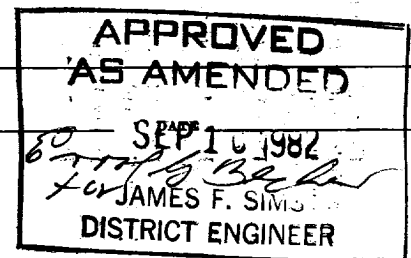
TITLE

CONDITIONS OF APPROVAL, IF ANY:



\*See Instructions On Reverse Side

NMOC



## OIL CONSERVATION DIVISION

STATE OF NEW MEXICO  
ENERGY AND MINERALS DEPARTMENT

P. O. BOX 2088

SANTA FE, NEW MEXICO 87501

Form C-102  
Revised 10-1-78

All distances must be from the outer boundaries of the Section.

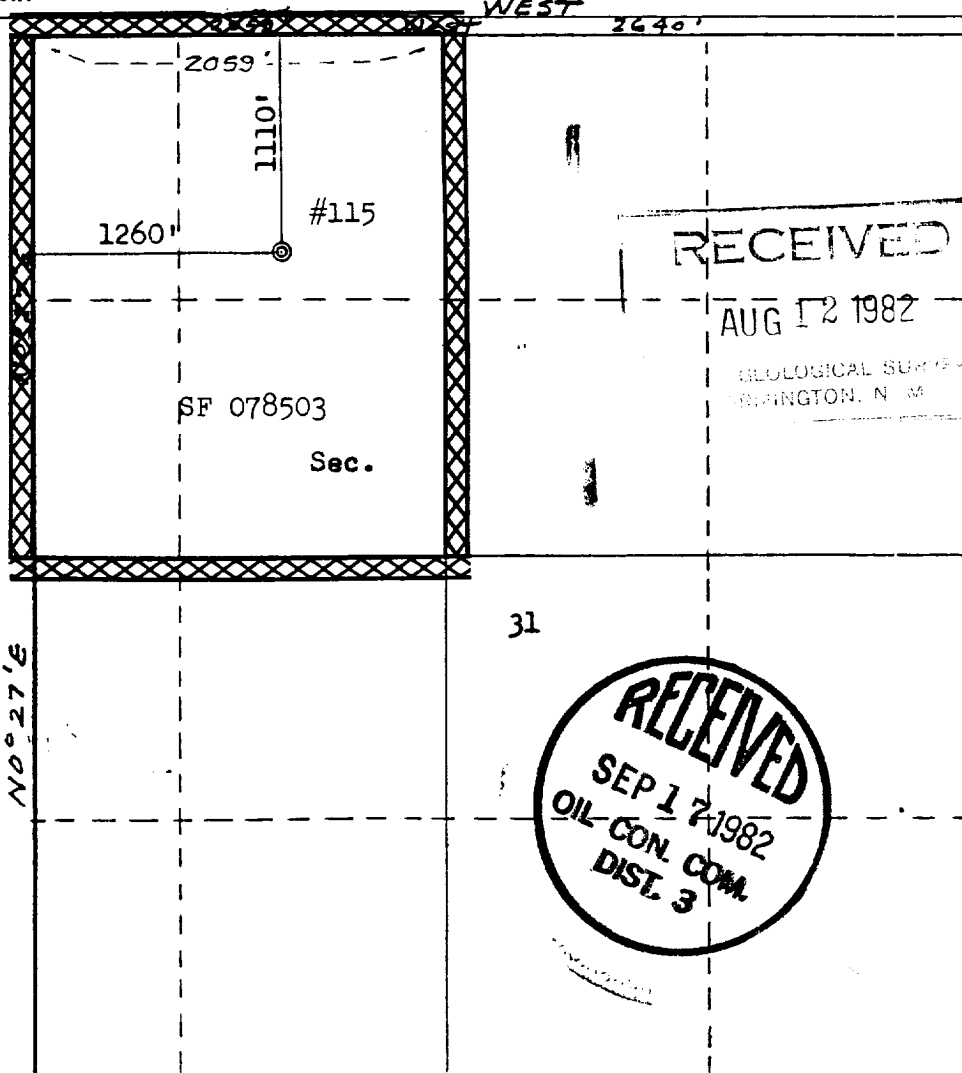
Operator <b>EL PASO NATURAL GAS COMPANY</b>			Lease <b>SAN JUAN 29-7 UNIT (SF 078503)</b>		Well No. <b>115</b>
Unit Letter <b>C</b>	Section <b>31</b>	Township <b>29N</b>	Range <b>7W</b>	County <b>Rio Arriba</b>	
Actual Footage Location of Well: <b>1110</b> feet from the <b>North</b> line and <b>1260</b> feet from the <b>West</b> line					
Ground Level Elev. <b>6288</b>	Producing Formation <b>Pictured Cliffs</b>		Pool <b>Blanco Pictured Cliffs</b>		Dedicated Acreage: <b>125.19</b> Acres

1. Outline the acreage dedicated to the subject well by colored pencil or hachure marks on the plat below.
2. If more than one lease is dedicated to the well, outline each and identify the ownership thereof (both as to working interest and royalty).
3. If more than one lease of different ownership is dedicated to the well, have the interests of all owners been consolidated by communitization, unitization, force-pooling, etc?

☒ Yes ☐ No If answer is "yes," type of consolidation Unitization

If answer is "no," list the owners and tract descriptions which have actually been consolidated. (Use reverse side of this form if necessary.) \_\_\_\_\_

No allowable will be assigned to the well until all interests have been consolidated (by communitization, unitization, forced-pooling, or otherwise) or until a non-standard unit, eliminating such interests, has been approved by the Commission. **NEW PLAT DUE TO ERROR IN LOCATION OF  $\frac{1}{4}$  COR. WITNESS CORNER ON GOVERNMENT PLAT.**



## CERTIFICATION

I hereby certify that the information contained herein is true and complete to the best of my knowledge and belief.

Name

Drilling Clerk

Position

El Paso Natural Gas Company

Company

August 12, 1982

Date

I hereby certify that the well location shown on this plat was plotted from field notes of actual surveys made by me or under my supervision, and that the same is true and correct to the best of my knowledge and belief.

Date Surveyed

August 12, 1982

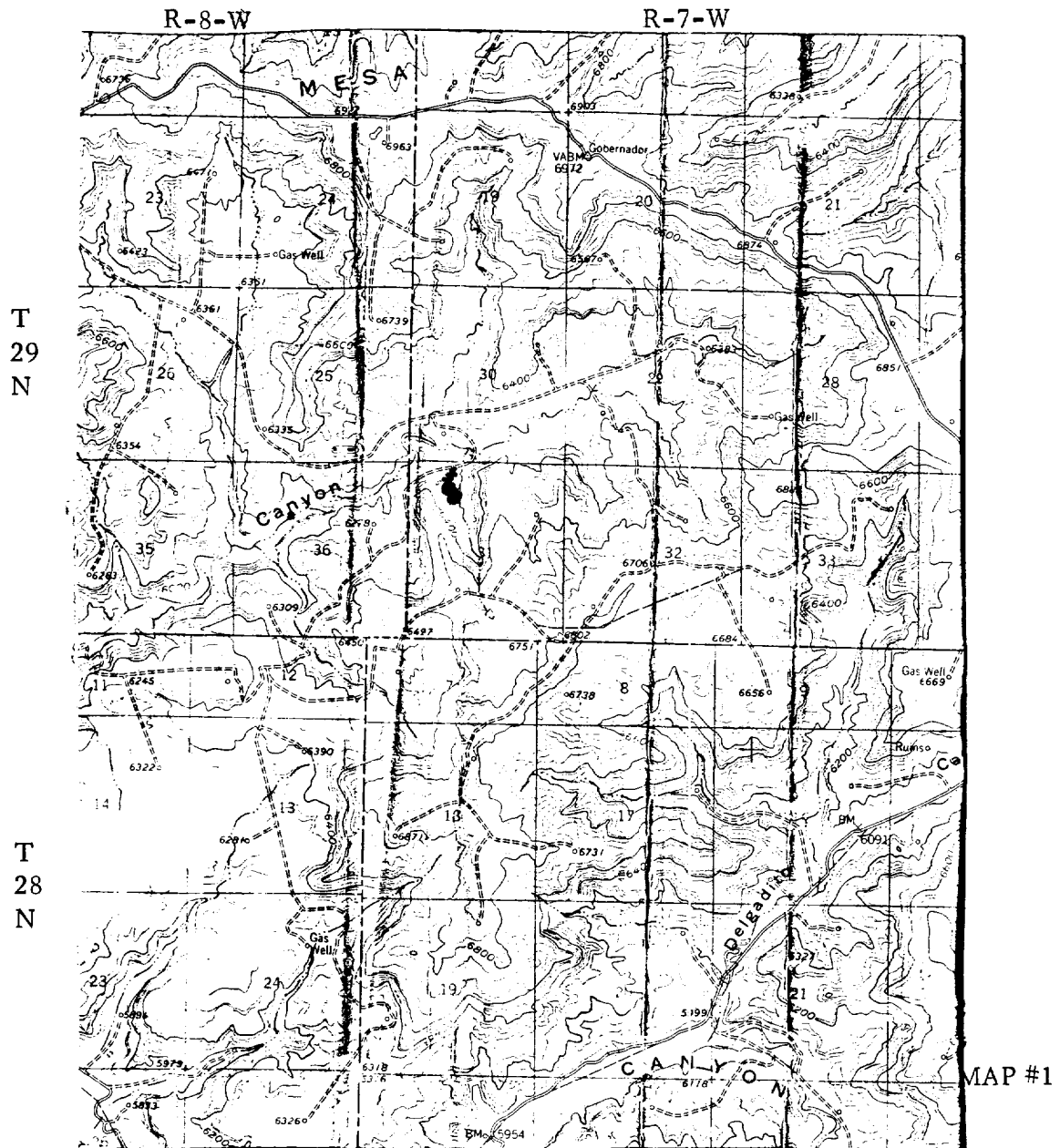
Registered Professional Engineer  
and/or Land Surveyor

Fred B. Kerr Jr.

Certificate No.

2050X 10

EL PASO NATURAL GAS COMPANY  
San Juan 29-7 Unit #115  
NW 31-29-7



LEGEND OF RIGHT-OF-WAYS

EXISTING ROADS

EXISTING PIPELINES

EXISTING ROAD & PIPELINE

PROPOSED ROADS

PROPOSED PIPELINES

PROPOSED ROAD & PIPELINE

