

UNITED STATES
DEPARTMENT OF THE INTERIOR
BUREAU OF LAND MANAGEMENT

APPLICATION FOR PERMIT TO DRILL, DEEPEN, OR PLUG BACK

1a. TYPE OF WORK

DRILL ☒

DEEPEN ☐

PLUG BACK ☐

b. TYPE OF WELL

OIL
WELL ☐

GAS
WELL ☒

OTHER

SINGLE
ZONE ☒

MULTIPLE
ZONE ☐

2. NAME OF OPERATOR

El Paso Natural Gas Company

3. ADDRESS OF OPERATOR

P O Box 4289, Farmington, NM 87499

4. LOCATION OF WELL (Report location clearly and in accordance with any State requirements)

At surface
1180'S, 1070'E

At proposed prod. zone

14. DISTANCE IN MILES AND DIRECTION FROM NEAREST TOWN OR POST OFFICE

21 miles East of Blanco, NM

15. DISTANCE FROM PROPOSED*

LOCATION TO NEAREST
PROPERTY OR LEASE LINE, FT.
(Also to nearest drlg. unit line, if any)

1070'

16. NO. OF ACRES IN LEASE

Unit 520

17. NO. OF ACRES ASSIGNED

TO THIS WELL
E 320.00

18. DISTANCE FROM PROPOSED LOCATION*

TO NEAREST WELL, DRILLING, COMPLETED
OR APPLIED FOR, ON THIS LEASE, FT.

2000'

19. PROPOSED DEPTH

5690'

20. ROTARY OR CABLE TOOLS

Rotary

21. ELEVATIONS (Show whether DF, RT, GR, etc.)

6233' GL

23.

DRILLING OPERATIONS AUTHORIZED ARE

SUBJECT TO COMPLIANCE WITH ATTACHED AND CEMENTING PROGRAM

"GENERAL REQUIREMENTS"

This action is subject to technical and
procedural review pursuant to 43 CFR 3165.3
and appeal pursuant to 43 CFR 3165.4.

SIZE OF HOLE	SIZE OF CASING	WEIGHT PER FOOT	SETTING DEPTH	
12 1/4"	9 5/8"	36.0 #	200'	138 cu.ft.circulated
8 3/4"	7"	20.0#	3380'	377 cu.ft.cover Ojo Alamo
6 1/4"	4 1/2"	10.5#	8230-5690'	433 cu.ft.circ. liner

Selectively perforate and sand water fracture the Mesa Verde formation.

A 3000 psi WP and 6000 psi test double gate preventer equipped with
blind and pipe rams will be used for blow out prevention on this well.

This gas is dedicated.

The E/2 of Section 15 is dedicated to this well.

DEC 06 1985

OIL CON. DIV.
DIST. 3

IN ABOVE SPACE DESCRIBE PROPOSED PROGRAM: If proposal is to deepen or plug back, give data on present productive zone and proposed new productive
zone. If proposal is to drill or deepen directionally, give pertinent data on subsurface locations and measured and true vertical depths. Give blowout
preventer program, if any.

24.

SIGNED

Peggy L. Dosh

TITLE

Drilling Clerk

DATE

11-26-85

(This space for Federal or State office use)

PERMIT NO.

APPROVAL DATE

APPROVED
AS AMENDED

APPROVED BY

TITLE

CONDITIONS OF APPROVAL, IF ANY:

DEC 03 1985

Alan S. Hiner
M. MILLENBACH
AREA MANAGER

NMOCC

*See Instructions On Reverse Side

**NEW MEXICO OIL CONSERVATION COMMISSION
WELL LOCATION AND ACREAGE DEDICATION PLAT**

Form O-102
Supersedes O-120
Effective 1-1-75

All distances must be from the outer boundaries of the Section.

Operator EL PASO NATURAL GAS COMPANY			Lease SAN JUAN 29-7 UNIT (SF-079290-A)		Well No. 56A
Unit Letter P	Section 15	Township 29N-	Range 7W	County RIO ARriba	
Actual Footage Location of Well:					
1180	feet from the	South	line and	1070	feet from the
					East
Ground Level Elev. 6233	Producing Formation MESA VERDE		Pool Blanco Mesa Verde	Dedicated Acres per 320.00	

1. Outline the acreage dedicated to the subject well by colored pencil or hatchure marks on the plat below.
2. If more than one lease is dedicated to the well, outline each and identify the ownership thereof (both as to working interest and royalty).
3. If more than one lease of different ownership is dedicated to the well, have the interests of all owners been consolidated by communitization, unitization, force-pooling, etc?

☒ Yes ☐ No If answer is "yes," type of consolidation Unitization

If answer is "no," list the owners and tract descriptions which have actually been consolidated. (Use reverse side of this form if necessary.) _____

No allowable will be assigned to the well until all interests have been consolidated (by communitization, unitization, forced-pooling, or otherwise) or until a non-standard unit, eliminating such interests, has been approved by the Commission.

<div data-bbox="108 989 475 1044" data-label="Text">RECEIVED</div> <div data-bbox="193 1064 394 1108" data-label="Text">NOV 27 1985</div> <div data-bbox="115 1144 469 1202" data-label="Text">BUREAU OF LAND MANAGEMENT FARMINGTON RESOURCE AREA</div> <div data-bbox="305 1323 574 1495" data-label="Text">DEC 06 1985 OIL CON. DIV. DIST. 3</div>			CERTIFICATION	
			<p>I hereby certify that the information contained herein is true and complete to the best of my knowledge and belief.</p> <p><i>A. B. Gibson</i></p>	
			<p>Name Drilling Clerk</p>	
			<p>Position El Paso Natural Gas Co.</p>	
		<p>Company August 31, 1978</p>		
		<p>Date</p>		
		<p>I hereby certify that the well location shown on this plat was plotted from field notes of actual surveys made by me or under my supervision, and that the same is true and correct to the best of my knowledge and belief.</p>		
		<p>Date Surveyed August 9, 1978</p>		
		<p>Registered Fred B. Kern, Jr.</p>		
		<p>3950</p>		

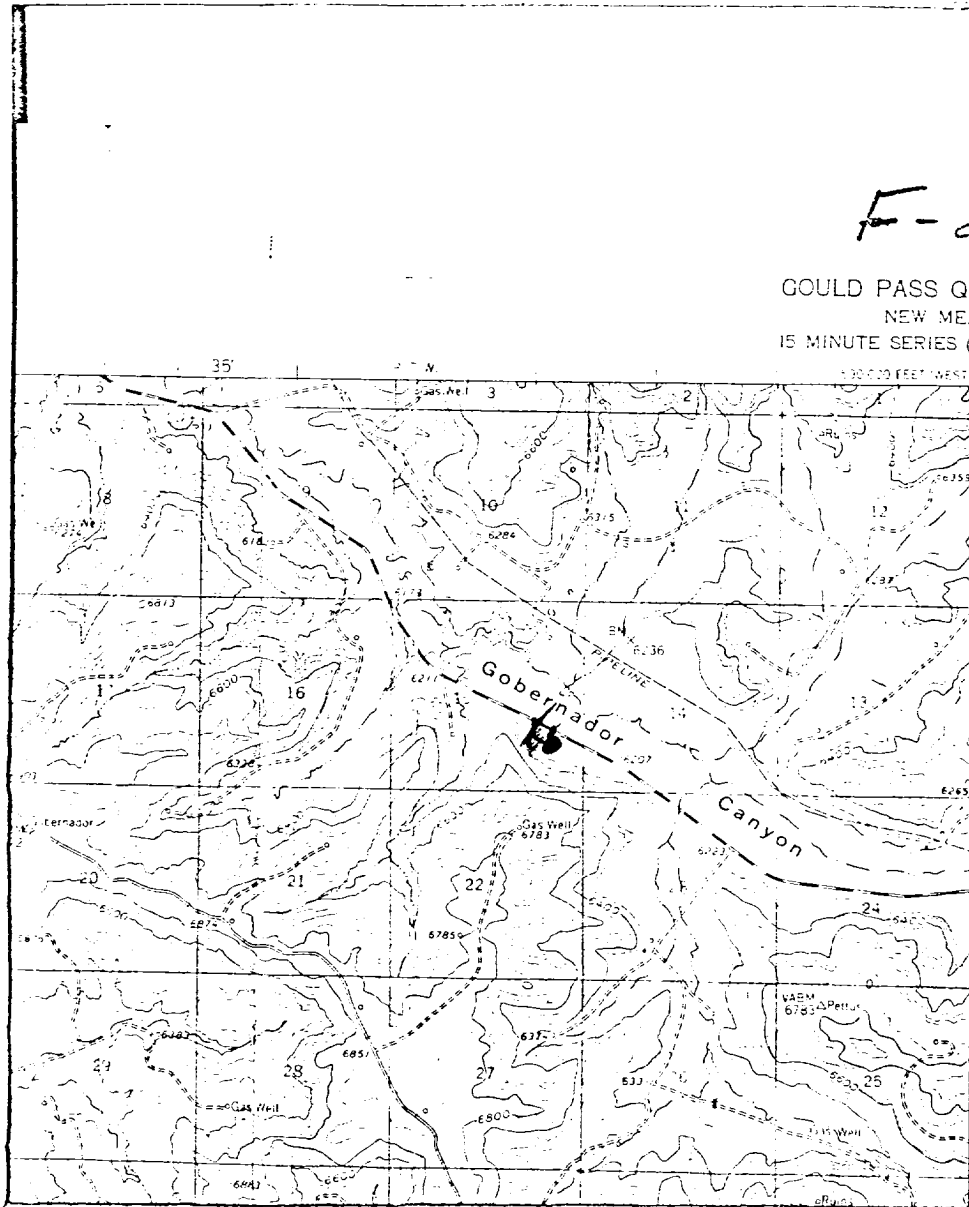
EL PASO NATURAL GAS COMPANY

San Juan 29-7 #56 A

SE 15-29-7

R-7-W

T
29
N



Map #1

LEGEND OF RIGHT-OF-WAYS

EXISTING ROADS	—
EXISTING PIPELINES	+++
EXISTING ROAD & PIPELINE	+++
PROPOSED ROADS	—
PROPOSED PIPELINES	+++
PROPOSED ROAD & PIPELINE	+++