

UNITED STATES  
DEPARTMENT OF THE INTERIOR  
BUREAU OF LAND MANAGEMENT

APPLICATION FOR PERMIT TO DRILL, DEEPEN, OR PLUG BACK

1a. TYPE OF WORK

DRILL ☒

DEEPEN ☐

PLUG BACK ☐

b. TYPE OF WELL

OIL  
WELL ☐

GAS  
WELL ☒

OTHER

SINGLE  
ZONE ☒

MULTIPLE  
ZONE ☐

2. NAME OF OPERATOR

El Paso Natural Gas Company

3. ADDRESS OF OPERATOR

P0 Box 4289, Farmington, NM 87499

4. LOCATION OF WELL (Report location clearly and in accordance with any State requirements)

At surface  
1050'S, 1600'E

At proposed prod. zone

14. DISTANCE IN MILES AND DIRECTION FROM NEAREST TOWN OR POST OFFICE\*

12 miles West of Gobernador, NM

10. DISTANCE FROM PROPOSED\*

LOCATION TO NEAREST  
PROPERTY OR LEASE LINE, FT. 1050'S  
(Also to nearest drlg. unit line, if any)

16. NO. OF ACRES IN LEASE

Unit

18. DISTANCE FROM PROPOSED LOCATION\*

TO NEAREST WELL, DRILLING, COMPLETED,  
OR APPLIED FOR, ON THIS LEASE, FT. 2480'

19. PROPOSED DEPTH

7780'

21. ELEVATIONS (Show whether DF, RT, GR, etc.)

6521' 6581' GL DRILLING OPERATIONS AUTHORIZED ARE

23. SUBJECT TO COMPLIANCE WITH ATTACHED

"GENERAL REQUIREMENTS"

PROPOSED CASING AND CEMENTING PROGRAM

This action is subject to technical and  
procedural review pursuant to 43 CFR 3165.3  
and appeal pursuant to 43 CFR 3165.4.

SIZE OF HOLE	SIZE OF CASING	WEIGHT PER FOOT	SETTING DEPTH	QUANTITY OF CEMENT
17 1/2"	13 3/8"	48.0#	200'	304 cf to surface
12 1/4"	9 5/8"	40.0#	3625'	889 cf to cover Ojo Alamo
8 3/4"	7"	23.0#	6065'	671 cf to circ. liner
6 1/4"	4 1/2"	11.6#	7780'	279 cf to circ. liner

Selectively perforate and sand water fracture the Mesa Verde & Dakota formations.

A 3000 psi WP and 6000 psi test double gate preventer equipped with blind and pipe rams will be used for blow out prevention on this well.

This gas is dedicated.

The E/2 of Section 19 is dedicated to this well.

RECEIVED

DEC 02 1985

OIL CON. DIV. I

DIST 3

IN ABOVE SPACE DESCRIBE PROPOSED PROGRAM: If proposal is to deepen or plug back, give data on present productive zone and proposed new productive zone. If proposal is to drill or deepen directionally, give pertinent data on subsurface locations and measured and true vertical depths. Give blowout preventer program, if any.

24.  Drilling Clerk 11-19-85

SIGNED

TITLE

DATE

(This space for Federal or State office use)

PERMIT NO.

APPROVAL DATE

APPROVED  
AS AMENDED

APPROVED BY

TITLE

CONDITIONS OF APPROVAL, IF ANY:

NOV 27 1985

/s/ J. Stan McKee

NMOCC

\*See Instructions On Reverse Side

M. MILLENBACH  
AREA MANAGER

NEW MEXICO OIL CONSERVATION COMMISSION  
WELL LOCATION AND ACREAGE DEDICATION PLAT

Form C-102  
Supersedes C-128  
Effective 1-1-55

All distances must be from the outer boundaries of the Section.

Operator <b>EL PASO NATURAL GAS COMPANY</b>			Lease <b>SAN JUAN 29-7 UNIT (SF 078503A)</b>		Well No. <b>127M</b>
Unit Letter <b>0</b>	Section <b>19</b>	Township <b>29N</b>	Range <b>7W</b>	County <b>Rio Arriba</b>	
Actual Footage Location of Well: <b>1050</b> feet from the <b>South</b> line and <b>1600</b> feet from the <b>East</b> line					
Ground Level Elev. <b>6571</b>	Producing Formation <b>Mesa Verde/Dakota</b>	Pool <b>Blanco/Basin</b>	Dedicated Acreage: <b>320/320</b> Acres		

1. Outline the acreage dedicated to the subject well by colored pencil or hatchure marks on the plat below.
2. If more than one lease is dedicated to the well, outline each and identify the ownership thereof (both as to working interest and royalty).
3. If more than one lease of different ownership is dedicated to the well, have the interests of all owners been consolidated by communitization, unitization, force-pooling, etc?

☒ Yes ☐ No If answer is "yes," type of consolidation Unitization

If answer is "no," list the owners and tract descriptions which have actually been consolidated. (Use reverse side of this form if necessary.)

No allowable will be assigned to the well until all interests have been consolidated (by communitization, unitization, forced-pooling, or otherwise) or until a non-standard unit, eliminating such interests, has been approved by the Commission.

# RECEIVED

NOV 26 1985

BUREAU OF LAND MANAGEMENT  
FARMINGTON RESOURCE AREA

# RECEIVED

DEC 02 1985

OIL CON. DIV.  
DIST. 3

Sec. **19**

**1050'**

**1600'**

Ed.

CERTIFICATION

I hereby certify that the information contained herein is true and complete to the best of my knowledge and belief.

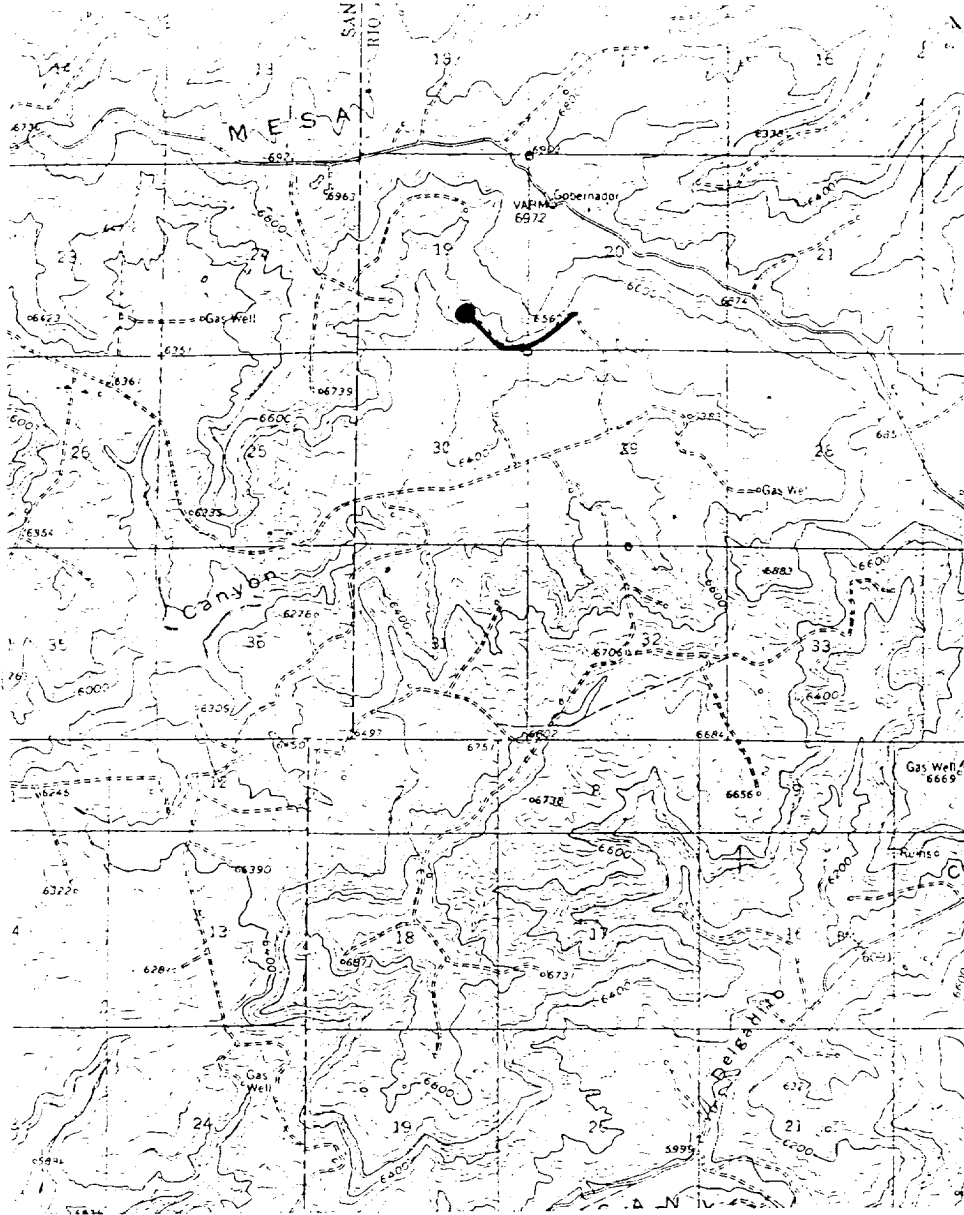
Name  
**Drilling Clerk**  
Position  
**El Paso Natural Gas**  
Company  
**11-20-85**  
Date

I hereby certify that the well location shown on this plat was plotted from field notes of actual surveys made by me or under my supervision, and that the same is true and correct to the best of my knowledge and belief.

Date Surveyed **9-24-85**  
**William E. Mahner II**  
Registered Professional Engineer  
and Land Surveyor  
**3466**  
Certificate No. **8166**

• Scale: 1"=1000'

Vicinity Map for  
 EL PASO NATURAL GAS COMPANY  
 #127M SAN JUAN 29-7 UNIT  
 1050FSL & 1600FEL  
 Sec.19 T29N R7W  
 Rio Arriba Co., N.M.



Map #1

LEGEND OF RIGHT-OF-WAYS

- EXISTING ROADS —————
- EXISTING PIPELINES + + +
- EXISTING ROAD & PIPELINE + + + +
- PROPOSED ROADS —————
- PROPOSED PIPELINES + + +
- PROPOSED ROAD & PIPELINE + + + +