

UNITED STATES
DEPARTMENT OF THE INTERIOR
BUREAU OF LAND MANAGEMENT

APPLICATION FOR PERMIT TO DRILL, DEEPEN, OR PLUG BACK

1a. TYPE OF WORK

DRILL ☒

DEEPEN ☐

PLUG BACK ☐

b. TYPE OF WELL

OIL
WELL ☐

GAS
WELL ☒

OTHER

SINGLE
ZONE ☒

MULTIPLE
ZONE ☐

2. NAME OF OPERATOR

~~El Paso Natural Gas Company~~ MERIDIAN OIL INC.

3. ADDRESS OF OPERATOR

PO Box 4289, Farmington, NM 87499

4. LOCATION OF WELL (Report location clearly and in accordance with any State requirements.)*

At surface
1075'S, 830'E

At proposed prod. zone

14. DISTANCE IN MILES AND DIRECTION FROM NEAREST TOWN OR POST OFFICE*

2 miles SE of Navajo City, NM

15. DISTANCE FROM PROPOSED*

LOCATION TO NEAREST
PROPERTY OR LEASE LINE, FT.
(Also to nearest drg. unit line, if any)

830'

16. NO. OF ACRES IN LEASE

Unit 2400

17. NO. OF ACRES ASSIGNED

TO THIS 320.00

18. DISTANCE FROM PROPOSED LOCATION*

TO NEAREST WELL, DRILLING, COMPLETE
OR APPLIED FOR, ON THIS LEASE, FT.

1000'

19. PROPOSED DEPTH

8040'

20. ROTARY OR CABLE TOOLS

Rotary

21. ELEVATIONS (Show whether DF, RT, GR, etc.)

6753' GL

DRILLING OPERATIONS AUTHORIZED ARE
SUBJECT TO COMPLIANCE WITH ATTACHED

22. APPROX. DATE WORK WILL START*

23.

"GENERAL REQUIREMENTS"
PROPOSED CASING AND CEMENTING PROGRAM

This action is subject to technical and
procedural review pursuant to 43 CFR 3165.3
and appeal pursuant to 43 CFR 3165.4.

| SIZE OF HOLE | SIZE OF CASING | WEIGHT PER FOOT | SETTING DEPTH |
|--------------|----------------|-----------------|---------------|
| 12 1/4" | 9 5/8" | 32.3# | 300' |
| 8 3/4" | 7" | 20.0# | 3950' |
| 6 1/4" | 4 1/2" | 10.5&11.6# | 8040' |

201 cf circulated
414 cf cover Ojo Alamo
638 cf fill to inter.

Selectively perforate and sand water fracture the Dakota formation.

A 3000 psi WP and 6000 psi test double gate preventer equipped with
blind and pipe rams will be used for blow out prevention on this well.

This gas is dedicated.

The E22 of Section 8 is dedicated to this well

RECEIVED
AUG 03 1987
OIL CON. DIV. 1
DIST. 3

IN ABOVE SPACE DESCRIBE PROPOSED PROGRAM: If proposal is to deepen or plug back, give data on present productive zone and proposed new productive zone. If proposal is to drill or deepen directionally, give pertinent data on subsurface locations and measured and true vertical depths. Give blowout preventer program, if any.

24. Drilling Clerk 07-06-87

SIGNED

TITLE

(This space for Federal or State office use)

DATE

APPROVED
AS AMENDED

PERMIT NO.

APPROVAL DATE

APPROVED BY

TITLE

CONDITIONS OF APPROVAL, IF ANY:

DATE

JUL 30 1987
AREA MANAGER

NMOCG

*See Instructions On Reverse Side

**NEW MEXICO OIL CONSERVATION COMMISSION
WELL LOCATION AND ACREAGE DEDICATION PLAT**

Form C-102
Supersedes C-128
Effective 1-4-65

All distances must be from the outer boundaries of the Section.

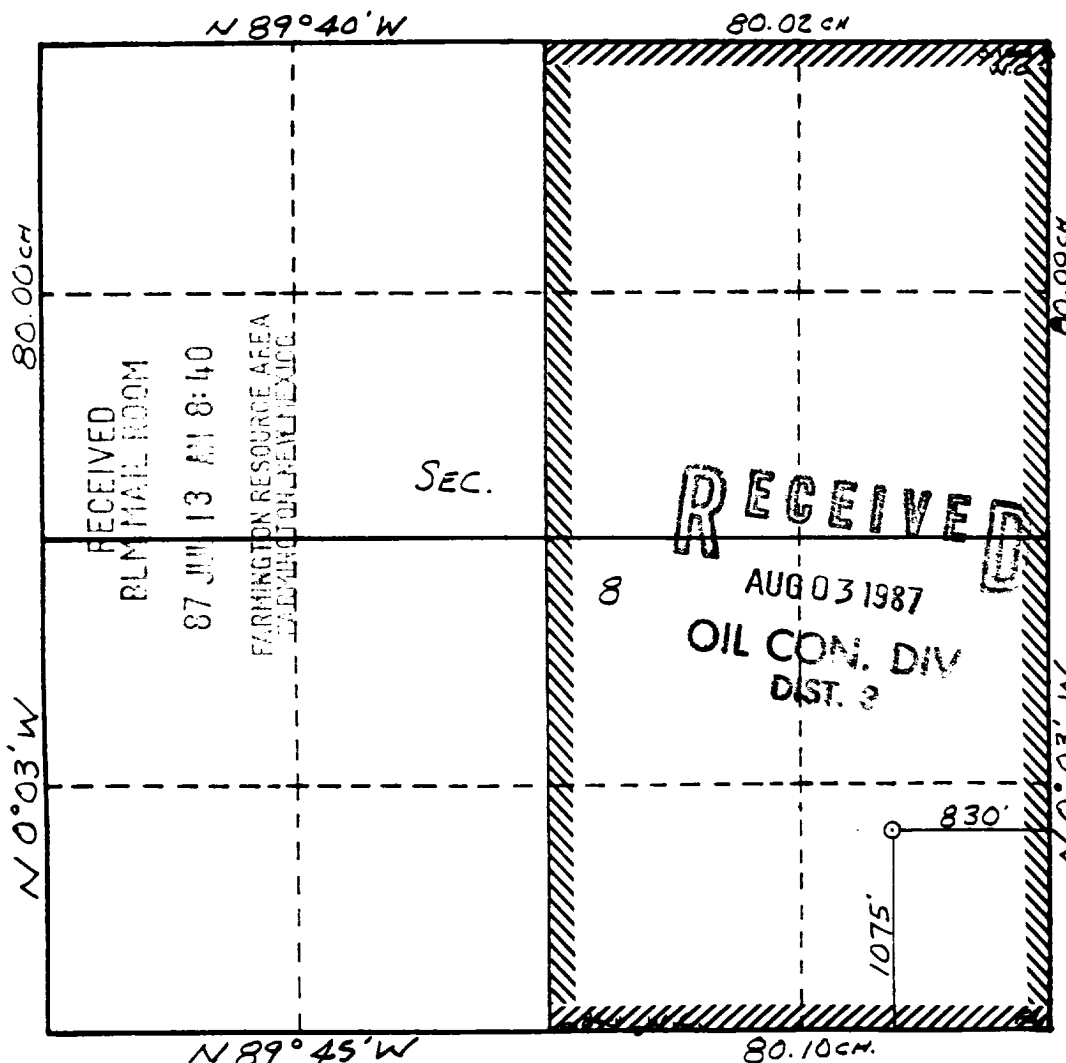
| | | | | |
|---|-----------------------------------|---|------------------------------------|--------------------------|
| Operator MERIDIAN OIL INC. EL PASO NATURAL GAS CO. | | Lease SAN JUAN 29-7 UNIT (SF-078423) | | Well No. 141 |
| Unit Letter P | Section 8 | Township 29 N | Range 7 W | County Rio Arriba |
| Actual Footage Location of Wells <div style="display: flex; justify-content: space-between;"> 1075 feet from the South line and 830 feet from the East line </div> | | | | |
| Ground Level Elev: 6753 | Producing Formation Dakota | Pool Basin | Dedicated Acreage 320 Acres | |

1. Outline the acreage dedicated to the subject well by colored pencil or hachure marks on the plat below.
2. If more than one lease is dedicated to the well, outline each and identify the ownership thereof (both as to working interest and royalty).
3. If more than one lease of different ownership is dedicated to the well, have the interests of all owners been consolidated by communitization, unitization, force-pooling, etc?

☒ Yes ☐ No If answer is "yes;" type of consolidation Unitization

If answer is "no," list the owners and tract descriptions which have actually been consolidated. (Use reverse side of this form if necessary.) _____

No allowable will be assigned to the well until all interests have been consolidated (by communitization, unitization, forced-pooling, or otherwise) or until a non-standard unit, eliminating such interests, has been approved by the Commission.



CERTIFICATION

I hereby certify that the information contained herein is true and complete to the best of my knowledge and belief.

Name _____
Drilling Clerk
 Position _____
El Paso Natural Gas Co
 Company _____
 Date _____

I hereby certify that the well location shown on this plat was plotted from field notes of actual surveys made by me or under my supervision, and that the same is true and correct to the best of my knowledge and belief.

Date Surveyed **6-20-87**
WILLIAM R. MARRAS II
 Registered Professional Engineer
 and Land Surveyor
 #8466
 Certificate No. **PROFESSIONAL**

OPERATIONS PLAN

Well Name - San Juan 29-7 Unit #141

Date: 06-Jul-87

I. Location: 1075' FSL, 830' FEL, Sec. 8, T-29-N, R-7-W, Rio Arriba Co., NM

Field: Basin Dakota

Elevation: 6753' GL

II. Geology:

| | | | |
|--------------------|------------------|-------------|------|
| A. Formation Tops: | Surface San Jose | Menefee | 5330 |
| | Ojo Alamo 2540 | Pt. Lookout | 5705 |
| | Kirtland 2720 | Gallup | 6750 |
| | Fruitland 3250 | Greenhorn | 7705 |
| | Pic. Cliffs 3558 | Graneros | 7758 |
| | Lewis 3695 | Dakota | 7895 |
| | Chacra 4510 | Total Depth | 8040 |
| | Mesa Verde 5190 | | |

B. Logging Program: Inter. TD Logs: IES, GR-D-N
Total Depth Logs: IND-GR, GR-D-N

C. Coring: None

D. Natural Gauges: 4500 5180 5320 5695 6740 7695
7748 7885 8040 , Also gauge any noticeable
increase in gas. Record all gauges in daily drilling
report and on morning report.

III. Drilling:

A: Mud Program: Mud from surface to 3950 . Gas from intermediate
casing to Total Depth.

IV. Materials:

| | | | | | |
|--------------------|-----------|-------|-----------|--------|-------|
| A. Casing Program: | Hole Size | Depth | Csg. Size | Weight | Grade |
| | 12 1/4" | 300 | 9 5/8" | 32.3# | H-40 |
| | 8 3/4" | 3950 | 7" | 20.0# | K-55 |
| | 6 1/4" | 6500 | 4 1/2" | 10.5# | K-55 |
| | | 8040 | 4 1/2" | 11.6# | K-55 |

B. Float Equipment: 9 5/8" surface casing - Saw Tooth guide shoe.

7" intermediate casing - guide shoe and self-fill insert float valve and
five centralizers. Run float two joints above shoe.

4 1/2" production casing - guide shoe and flapper type float collar.

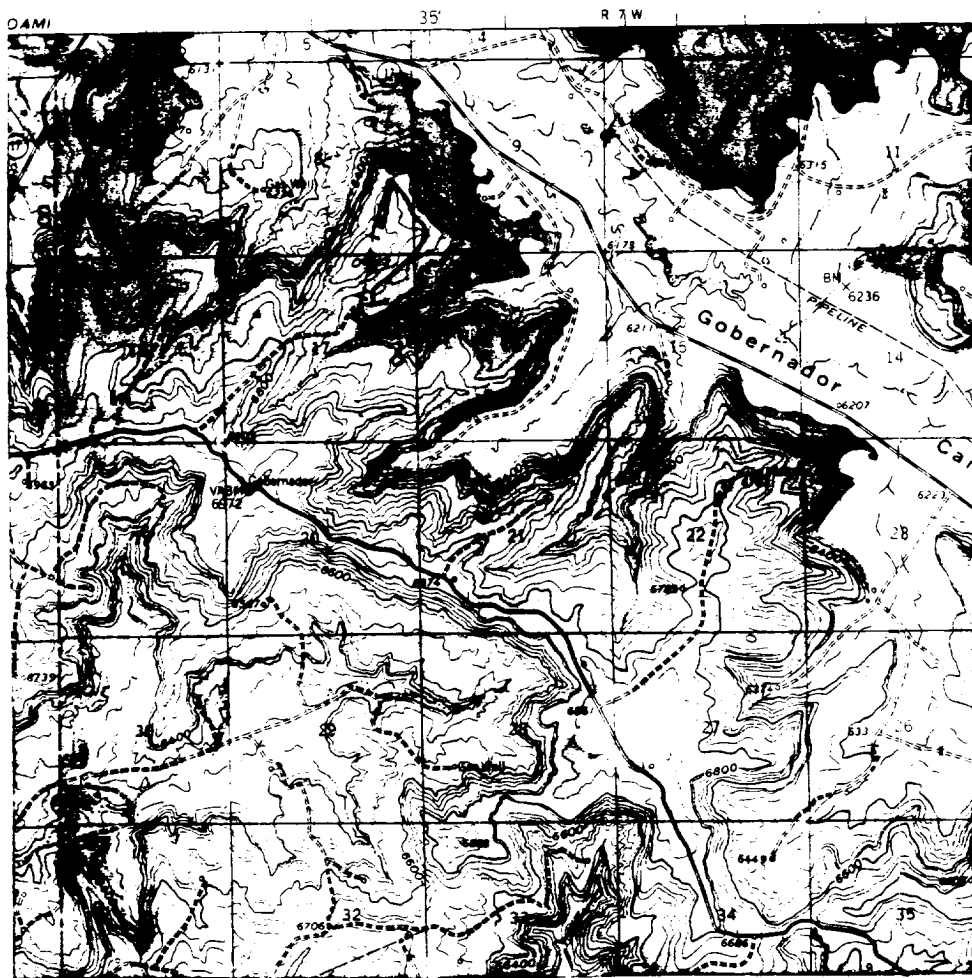
C. Tubing: 8040 of 1 1/2", 2.9#, J-55 10rd EUE tubing with seating nipp
one joint from bottom and expendable check valve on bottom.

D. Wellhead Equipment: 10" 3000 psi x 9 5/8" xmas tree assembly.

V. Cementing:

9 5/8" surface casing-use 170 sks. of Class B cement with 1/4# gel-
flake/sk. and 3% calcium chloride (201 cu.ft. of slurry, 100% exces
to circulate to surface). WOC 12 hours. Test casing to 600 psi for 30
minutes.

SAN JUAN 29-7 UNIT # 141
SE 8, T-29-N, R-7-W
RIO ARRIBA CO., NM



Map #2

LEGEND OF RIGHT-OF-WAYS

- EXISTING ROADS —————
- EXISTING PIPELINES + + +
- EXISTING ROAD & PIPELINE + + + +
- PROPOSED ROADS —————
- PROPOSED PIPELINES + + +
- PROPOSED ROAD & PIPELINE + + + +
- LOCATION