

UNITED STATES  
DEPARTMENT OF THE INTERIOR  
BUREAU OF LAND MANAGEMENT

APPLICATION FOR PERMIT TO DRILL, DEEPEN, OR PLUG BACK

1A. TYPE OF WORK

DRILL ☒

DEEPEN ☐

PLUG BACK ☐

B. TYPE OF WELL

OIL  
WELL ☐

GAS  
WELL ☒

OTHER ☐

2. NAME OF OPERATOR

*El Paso Natural Gas Company*

3. ADDRESS OF OPERATOR

PO Box 4289, Farmington, NM 87499

4. LOCATION OF WELL (Report location clearly and in accordance with any State requirements.)\*

At *1005' N, 1475' E*

At proposed prod. zone

14. DISTANCE IN MILES AND DIRECTION FROM NEAREST TOWN OR POST OFFICE\*

7 miles from Gobernador, NM

15. DISTANCE FROM PROPOSED\*

LOCATION TO NEAREST  
PROPERTY OR LEASE LINE, FT.  
(Also to nearest drig. unit line, if any)

1005'

16. NO. OF ACRES IN LEASE

1235.92

17. NO. OF ACRES ASSIGNED

TO THIS WELL 160.00

18. DISTANCE FROM PROPOSED LOCATION\*  
TO NEAREST WELL, DRILLING, COMPLETED,  
OR APPLIED FOR, ON THIS LEASE, FT.

450'

19. PROPOSED DEPTH

3145'

20. ROTARY OR CABLE TOOLS

Rotary

21. ELEVATIONS (Show whether DF, RT, GR, etc.)

6283' GL

DRILLING OPERATIONS AUTHORIZED ARE  
SUBJECT TO COMPLIANCE WITH ALL APPLICABLE  
FEDERAL, STATE, AND LOCAL LAWS AND REGULATIONS.

22. APPROX. DATE WORK WILL START\*

23.

PROPOSED CASING AND CEMENTING PROGRAM

This action is subject to technical and  
procedural review pursuant to 43 CFR 3165.3  
and applicable state law.

SIZE OF HOLE	SIZE OF CASING	WEIGHT PER FOOT	SETTING DEPTH	
12 1/4"	9 5/8"	32.3#	200'	130 cf. circulated
3 3/4"	7"	20.0#	2900'	195 cf. cover Ojo Alamo
6 1/4"	5 1/2" liner	23.0#	3145'	do not cement

The Fruitland coal formation will be completed.

A 3000 psi WP and 6000 psi test double gate preventer equipped with  
blind and pipe rams will be used for blow out prevention on this well.

This gas is dedicated.

The NE/4 of Section 13 is dedicated to this well.

RECEIVED  
NOV 14 1985  
OIL CON  
DIST

IN ABOVE SPACE DESCRIBE PROPOSED PROGRAM: If proposal is to deepen or plug back, give data on present productive zone and proposed new productive zone. If proposal is to drill or deepen directionally, give pertinent data on subsurface locations and measured and true vertical depths. Give blowout preventer program, if any.

24.

SIGNED

*[Signature]*

TITLE

Regulatory Affairs

DATE 09-12-88

(This space for Federal or State office use)

PERMIT NO.

APPROVAL DATE

APPROVED BY

TITLE

DATE NOV 18 1988

CONDITIONS OF APPROVAL, IF ANY:

*HOLD C-104 FOR NBP*

LMOCC

AREA MANAGER

\*See Instructions On Reverse Side

STATE OF NEW MEXICO  
ENERGY AND MINERALS DEPARTMENT

OIL CONSERVATION DIVISION

P. O. BOX 2088

SANTA FE, NEW MEXICO 87501

Form C-102  
Revised 10-1-7

All distances must be from the outer boundaries of the Section.

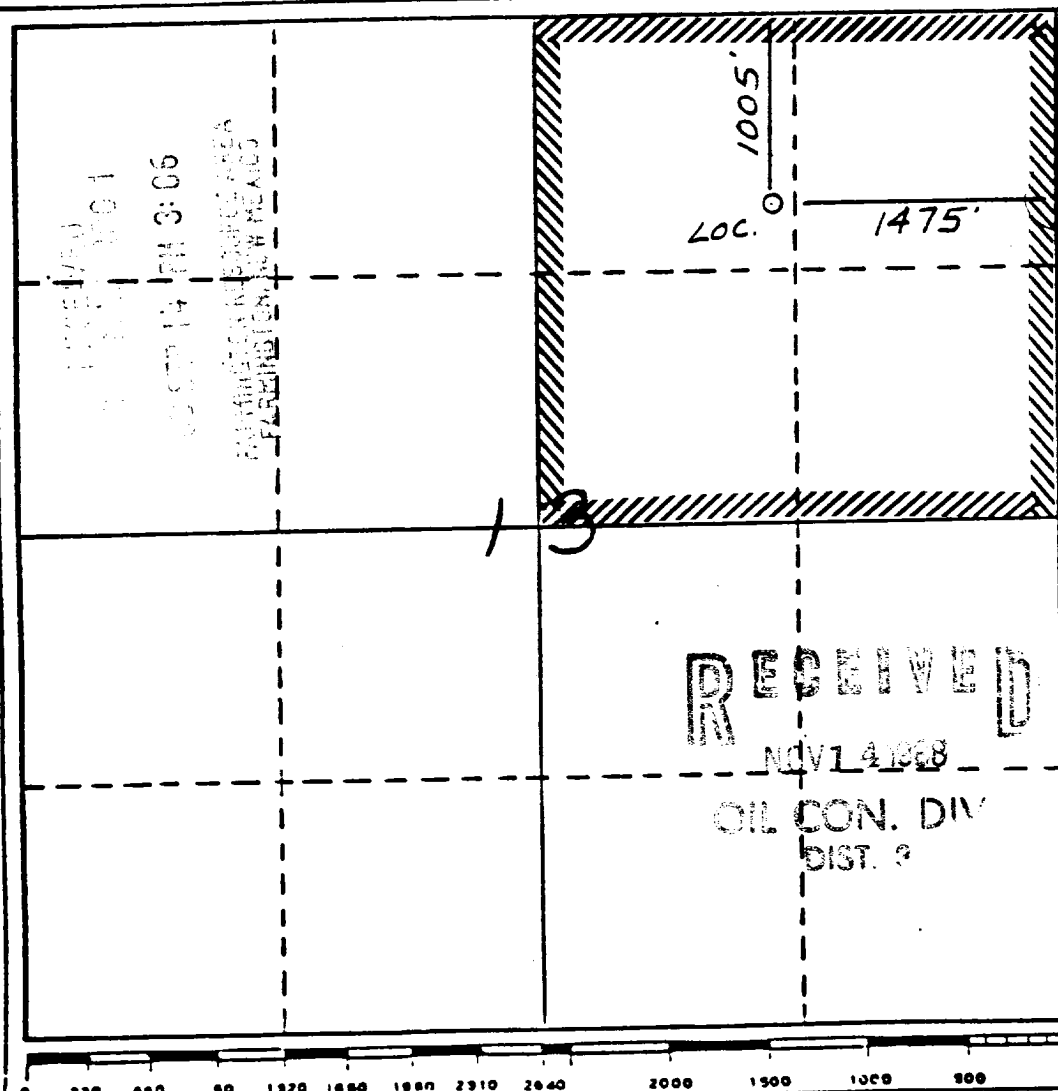
Operator <i>Mountain Oil Inc</i> <del>El Paso Natural Gas</del>		Lease San Juan 29-7 Unit (SF-079514)		Well No. 507
Unit Letter B	Section 13	Township 29 North	Range 7 West	County Rio Arriba
Actual Footage Location of Wells 1005 feet from the North line and 1475 feet from the East line				
Ground Level Elev. 6283	Producing Formation Fruitland Coal	Pool <i>BASIN</i> Undesignated	Dedicated Acreage: 160 Acres	

1. Outline the acreage dedicated to the subject well by colored pencil or hachure marks on the plat below.
2. If more than one lease is dedicated to the well, outline each and identify the ownership thereof (both as to working interest and royalty).
3. If more than one lease of different ownership is dedicated to the well, have the interests of all owners been consolidated by communitization, unitization, force-pooling, etc?

☒ Yes ☐ No If answer is "yes," type of consolidation unitization

If answer is "no," list the owners and tract descriptions which have actually been consolidated. (Use reverse side of this form if necessary.)

No allowable will be assigned to the well until all interests have been consolidated (by communitization, unitization, forced-pooling, or otherwise) or until a non-standard unit, eliminating such interests, has been approved by the Division.



CERTIFICATION

I hereby certify that the information contained herein is true and complete to the best of my knowledge and belief.

*[Signature]*

Name

Regulatory Affairs

Position

El Paso Natural Gas

Company

*9-12-88*

Date

I hereby certify that the location shown on this plat was plotted from field notes of actual surveys made by me or under my supervision, and that the same is true and correct to the best of my knowledge and belief.

*[Signature]*

Date Surveyed

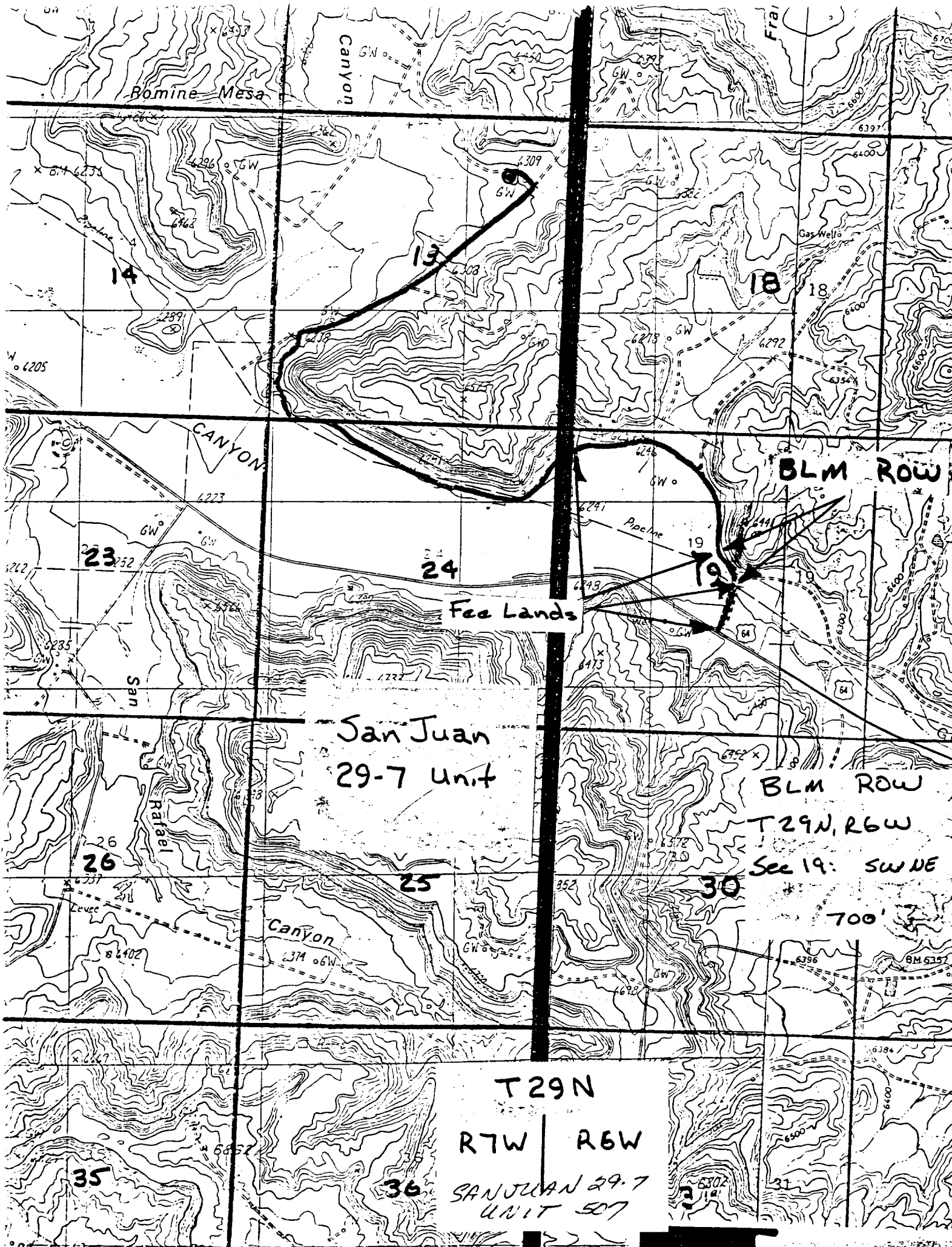
8-15-88

Registered Professional Engineer and/or Land Surveyor

Neale C. Edwards

Certificate No.

6857



Bomine Mesa

Canyon

Frai

14

19

18

18

23

24

19

26

25

30

700'

35

36

31

San Juan  
29-7 unit

Fee Lands

BLM ROW

BLM ROW

T29N, R6W

See 19: SW NE

T29N

R7W | R6W

SAN JUAN 29-7  
UNIT 507