

State of New Mexico  
Energy, Minerals and Natural Resources Department

Form C-101

OIL CONSERVATION DIVISION  
P.O. Box 2088  
Santa Fe, New Mexico 87504-2088

APPLICATION FOR PERMIT TO DRILL, DEEPEN, OR PLUG BACK  <hr/> 1a. Type of Work DRILL b. Type of Well GAS SINGLE ZONE	API NO. (assigned by OCD on new well) <i>30-039-24810</i> 5. Indicate Type of Lease FEE 6. State Oil & Gas Lease No.
2. Name of Operator MERIDIAN OIL INC.	7. Lease Name or Unit Agreement Name SAN JUAN 29-7 UNIT
3. Address of Operator <i>14538</i> PO Box 4289, Farmington, NM 87499	8. Well No. <i>7465</i> 554
4. Well Location Unit letter M 790' FSL 995' FWL Section 14 T29N R07W NMPM RIO ARRIBA COUNTY	9. Pool Name or Wildcat <i>W/320</i> BASIN FRUITLAND COAL <i>7/4 29</i>

10. Proposed Depth 3015'	11. Formation FRUITLAND COAL	12. Rotary or C.T. Rotary
13. Elevation 6202' GL	14. Bond Type statewide	15. Drill. Contractor
16. Est. Start Date upon approval		

17. PROPOSED CASING AND CEMENT PROGRAM

SIZE HOLE	SIZE CASING	WT. PER FT.	SET. DEPTH	SKS OF CEMENT	EST. TOP
12 1/4"	8 5/8"	24.0#	200 ft.	248 cu.ft.	circ surface
7 7/8"	5 1/2"	15.5#	3015 ft.	1053 cu.ft.	circ surface

The Fruitland Coal formation will be completed.  
A minimum 2000 psi working pressure double gate blowout preventer equipped with blind and pipe rams will be used for blow out prevention on this well. This gas is dedicated.  
The W/2 of Sec 14 is dedicated to this well.

I hereby certify that the information above is true and complete to the best of my knowledge and belief.

SIGNATURE *J. Caldwell* TITLE Reg. Drilling Engr. DATE 7/6/90

(This space for State Use)

APPROVED BY *Ernest Brink* DEPUTY OIL & GAS INSPECTOR, DIST. #3  
CONDITIONS OF APPROVAL, IF ANY: TITLE \_\_\_\_\_ DATE JUL 09 1990

APPROVAL EXPIRES 1-9-91  
UNLESS DRILLING IS COMMENCED.  
SPUD NOTICE MUST BE SUBMITTED  
WITHIN 10 DAYS.

Submit to Appropriate  
District Office  
State Leases - 4 copies  
Fee Leases - 3 copies

State of New Mexico  
Energy, Minerals and Natural Resources Department

Form C-102  
Revised 1-1-89

**OIL CONSERVATION DIVISION**  
P.O. Box 2088  
Santa Fe, New Mexico 87504-2088

**DISTRICT I**  
P.O. Box 1980, Hobbs, NM 88240

**DISTRICT II**  
P.O. Drawer DD, Artesia, NM 88210

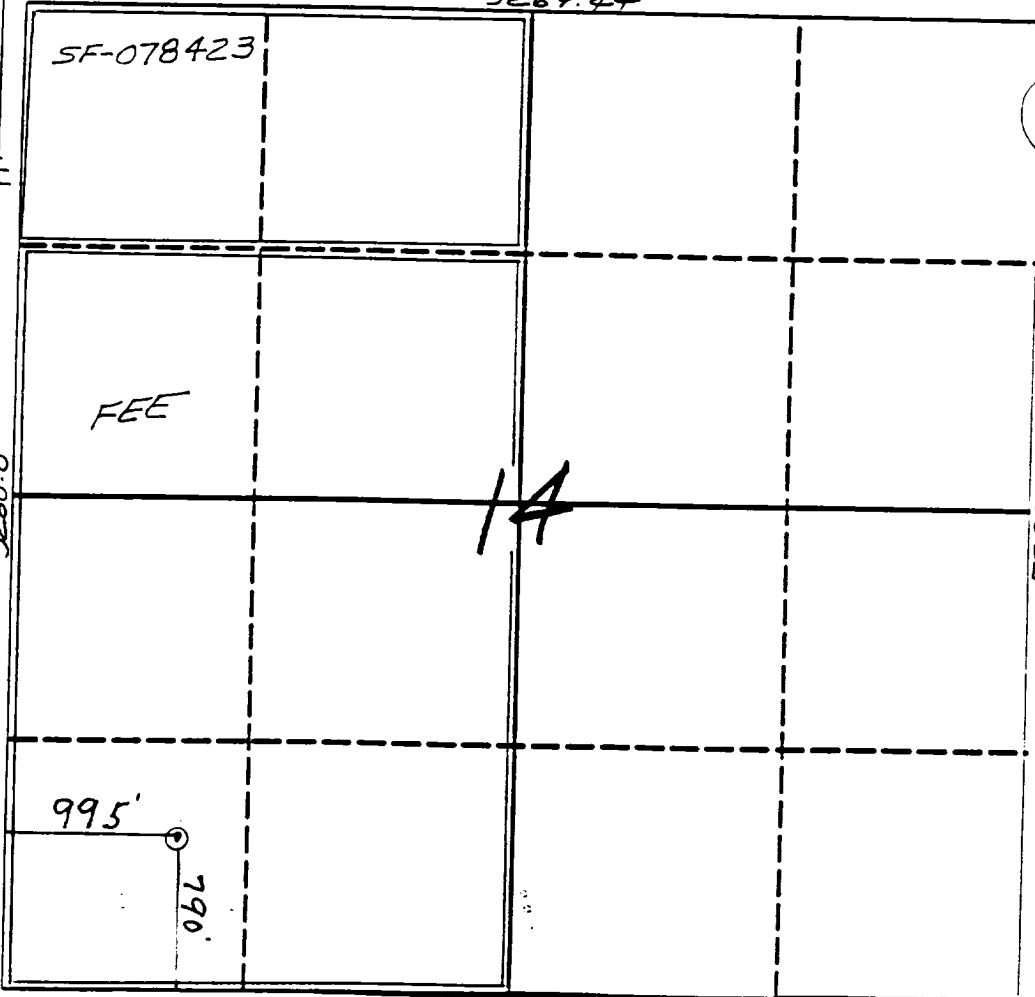
**DISTRICT III**  
1000 Rio Brazos Rd., Aztec, NM 87410

**WELL LOCATION AND ACREAGE DEDICATION PLAT**

All Distances must be from the outer boundaries of the section

Operator Meridian Oil Inc.			Lease San Juan 29-7 Unit (Fee)		Well No. 554
Unit Letter M	Section 14	Township 29N	Range 7W	County Rio Arriba	
Actual Footage Location of Well: 790 feet from the South line and 995 feet from the West line					
Ground level Elev. 6202'	Producing Formation Fruitland Coal		Pool Basin	Dedicated Acreage: 320 Acres	

- Outline the acreage dedicated to the subject well by colored pencil or hachure marks on the plat below.
  - If more than one lease is dedicated to the well, outline each and identify the ownership thereof (both as to working interest and royalty).
  - If more than one lease of different ownership is dedicated to the well, have the interest of all owners been consolidated by communitization, unitization, force-pooling, etc.?
    - Yes  No
    - If answer is "yes" type of consolidation unitization
- If answer is "no" list the owners and tract descriptions which have actually been consolidated. (Use reverse side of this form if necessary.)
- No allowable will be assigned to the well until all interests have been consolidated (by communitization, unitization, forced-pooling, or otherwise) or until a non-standard unit, eliminating such interest, has been approved by the Division.



**OPERATOR CERTIFICATION**

I hereby certify that the information contained herein is true and complete to the best of my knowledge and belief.

*Peggy Bradford*  
Signature

Peggy Bradford  
Printed Name

Regulatory Affairs  
Position

Meridian Oil Inc.  
Company

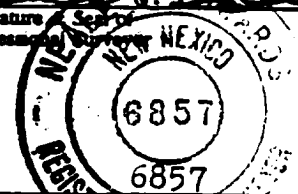
7-6-90  
Date

**SURVEYOR CERTIFICATION**

I hereby certify that the well location shown on this plat was plotted from field notes of actual surveys made by me or under my supervision, and that the same is true and correct to the best of my knowledge and belief.

7-6-90  
Date Surveyed

*Neale G. Edwards*  
Signature  
Professional Surveyor



Neale G. Edwards  
Certificate No. 6857

0 330 660 990 1320 1650 1980 2310 2640 2000 1500 1000 500 0