

OIL CONSERVATION DIVISION
P.O. Box 2088
Santa Fe, New Mexico 87504-2088

APPLICATION FOR PERMIT TO DRILL, DEEPEN, OR PLUG BACK	API NO. (assigned by OCD on new well) <i>30-039-24811</i>
-----	5. Indicate Type of Lease FEE
-----	6. State Oil & Gas Lease No.
1a. Type of Work DRILL	7. Lease Name or Unit Agreement Name SAN JUAN 29-7 UNIT
b. Type of Well GAS SINGLE ZONE	-----
2. Name of Operator MERIDIAN OIL INC.	8. Well No. <i>7465</i> 560
<i>14538</i>	9. Pool Name or Wildcat BASIN FRUITLAND COAL <i>E/320</i>
3. Address of Operator PO Box 4289, Farmington, NM 87499	<i>71629</i>
4. Well Location Unit letter G 1640' FNL 1645' FEL Section 23 T29N R07W NMPM RIO ARRIBA COUNTY	

10. Proposed Depth 3051'	11. Formation FRUITLAND COAL	12. Rotary or C.T. Rotary
13. Elevation 6225' GL	14. Bond Type statewide	15. Drill. Contractor
		16. Est. Start Date upon approval

17. PROPOSED CASING AND CEMENT PROGRAM

SIZE HOLE	SIZE CASING	WT. PER FT.	SET. DEPTH	SKS OF CEMENT	EST. TOP
12 1/4"	8 5/8"	24.0#	200 ft.	248 cu.ft.	circ surface
7 7/8"	5 1/2"	15.5#	3051 ft.	1065 cu.ft.	circ surface

The Fruitland Coal formation will be completed.
A minimum 2000 psi working pressure double gate blowout preventer equipped with blind and pipe rams will be used for blow out prevention on this well. This gas is dedicated.
The E/2 of Sec 23 is dedicated to this well.

I hereby certify that the information above is true and complete to the best of my knowledge and belief.

SIGNATURE *JV Caldwell* TITLE Reg. Drilling Engr. DATE *7/6/90*

(This space for State Use)

APPROVED BY *Gene Beach* TITLE DEPUTY OIL & GAS INSPECTOR, DIST. #3 DATE JUL 09 1990

Conditions of approval, if any:

APPROVAL EXPIRES *1-9-91*
UNLESS DRILLING IS COMMENCED.
SPUD NOTICE MUST BE SUBMITTED
WITHIN 10 DAYS.

Submit to Appropriate
District Office
State Lease - 4 copies
Fee Lease - 3 copies

State of New Mexico
Energy, Minerals and Natural Resources Department

Form C-102
Revised 1-1-89

OIL CONSERVATION DIVISION
P.O. Box 2088
Santa Fe, New Mexico 87504-2088

DISTRICT I
P.O. Box 1980, Hobbs, NM 88240

DISTRICT II
P.O. Drawer DD, Artesia, NM 88210

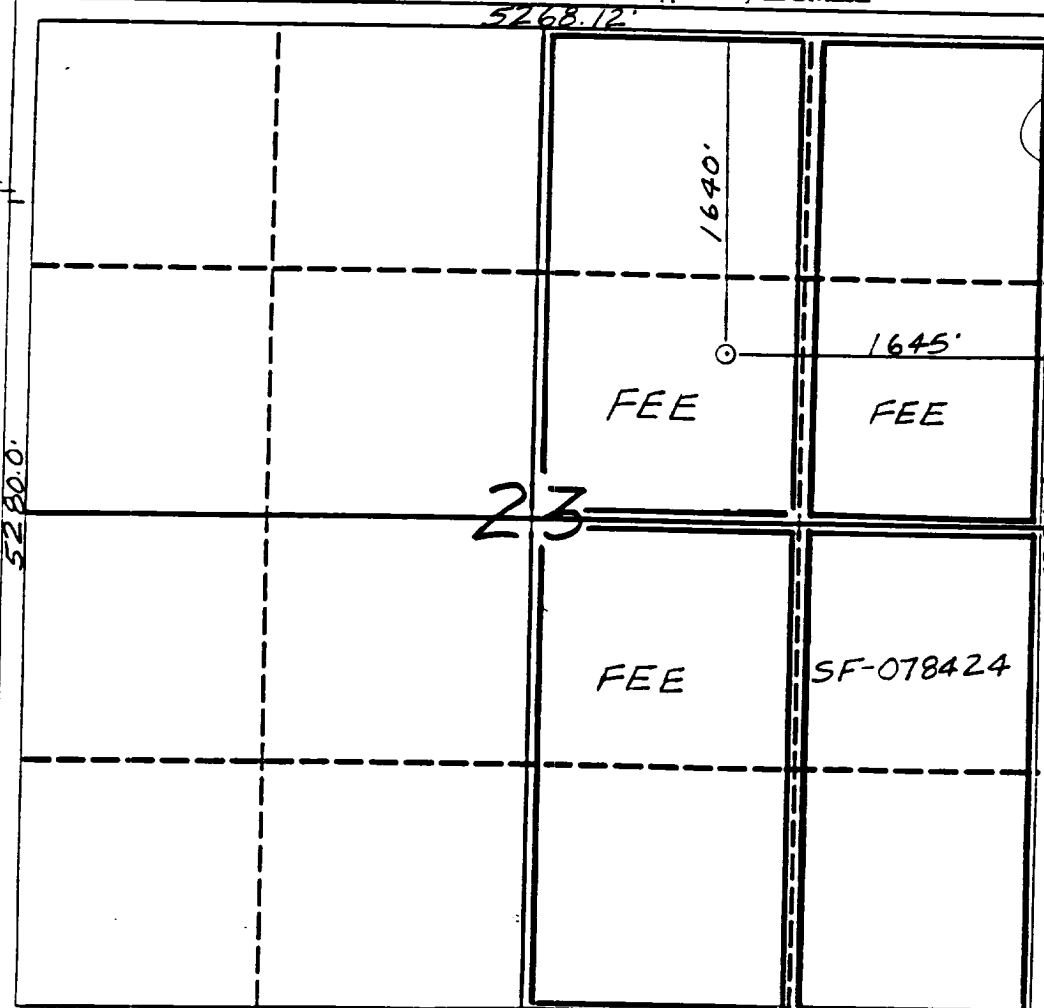
DISTRICT III
1000 Rio Brazos Rd., Aztec, NM 87410

WELL LOCATION AND ACREAGE DEDICATION PLAT

All Distances must be from the outer boundaries of the section

Operator Meridian Oil Inc.		Lease San Juan 29-7 Unit (Fee)		Well No. 560
Unit Letter G	Section 23	Township 29 North	Range 7 West	County Rio Arriba
Actual Footage Location of Well: 1640 feet from the North line and 1645 feet from the East line				
Ground level Elev. 6225'	Producing Formation Fruitland Coal	Pool Basin	Dedicated Acreage: 320 Acres	

- Outline the acreage dedicated to the subject well by colored pencil or hatchure marks on the plat below.
 - If more than one lease is dedicated to the well, outline each and identify the ownership thereof (both as to working interest and royalty).
 - If more than one lease of different ownership is dedicated to the well, have the interest of all owners been consolidated by communitization, unitization, force-pooling, etc.?
 - Yes No
 - If answer is "yes" type of consolidation unitization
- If answer is "no" list the owners and tract descriptions which have actually been consolidated. (Use reverse side of this form if necessary.)
- No allowable will be assigned to the well until all interests have been consolidated (by communitization, unitization, forced-pooling, or otherwise) or until a non-standard unit, eliminating such interest, has been approved by the Division.



OPERATOR CERTIFICATION

I hereby certify that the information contained herein is true and complete to the best of my knowledge and belief.

Peggy Bradfield
Signature

Peggy Bradfield
Printed Name

Regulatory Affairs
Position

Meridian Oil Inc.
Company

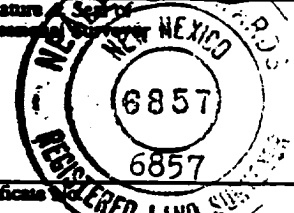
7-6-90
Date

SURVEYOR CERTIFICATION

I hereby certify that the well location shown on this plat was plotted from field notes or actual surveys made by me or under my supervision, and that the same is true and correct to the best of my knowledge and belief.

7-3-90
Date Surveyed

Neale G. Edwards
Signature



Neale G. Edwards
Certificator

