

State of New Mexico
Energy, Minerals and Natural Resources Department

Form C-101

OIL CONSERVATION DIVISION
P.O. Box 2088
Santa Fe, New Mexico 87504-2088

APPLICATION FOR PERMIT TO DRILL, DEEPEN,
OR PLUG BACK

API NO. (assigned by OCD on new well)

30-039-24813

5. Indicate Type of Lease
FEE

6. State Oil & Gas Lease No.

1a. Type of Work
DRILL

b. Type of Well
GAS SINGLE ZONE

7. Lease Name or Unit Agreement Name
SAN JUAN 29-7 UNIT

2. Name of Operator
MERIDIAN OIL INC.

8. Well No.
565

W/320

3. Address of Operator
PO Box 4289, Farmington, NM 87499

9. Pool Name or Wildcat
BASIN FRUITLAND COAL

4. Well Location
Unit letter N 1075' FSL 1735' FWL
Section 26 T29N R07W NMPM RIO ARRIBA COUNTY

10. Proposed Depth
3168'

11. Formation 12. Rotary or C.T.
FRUITLAND COAL Rotary

13. Elevation
6361' GL

14. Bond Type
statewide

15. Drill. Contractor

16. Est. Start Date
upon approval

17. PROPOSED CASING AND CEMENT PROGRAM

SIZE HOLE	SIZE CASING	WT. PER FT.	SET. DEPTH	SKS OF CEMENT	EST. TOP
12 1/4"	8 5/8"	24.0#	200 ft.	248 cu.ft.	circ surface
7 7/8"	5 1/2"	15.5#	3168 ft.	1106 cu.ft.	circ surface

The Fruitland Coal formation will be completed.
A minimum 2000 psi working pressure double gate blowout preventer
equipped with blind and pipe rams will be used for blow out prevention
on this well. This gas is dedicated.
The W/2 of Sec 26 is dedicated to this well.

I hereby certify that the information above is true and complete to the best
of my knowledge and belief.

SIGNATURE *[Signature]* TITLE Reg. Drilling Engr. DATE *7/6/90*

(This space for State Use)

APPROVED BY *[Signature]*
Conditions of approval, if any:

DEPUTY OIL & GAS INSPECTOR, DIST. #3

TITLE

DATE JUL 09 1990

APPROVAL EXPIRES *1-9-91*
UNLESS DRILLING IS COMMENCED.
SPUD NOTICE MUST BE SUBMITTED
WITHIN 10 DAYS.

Submit to Asst. Comm.
District Office
State Leases - 4 copies
Fee Leases - 3 copies

State of New Mexico
Energy, Minerals and Natural Resources Department

Form C-102
Revised 1-1-89

OIL CONSERVATION DIVISION

DISTRICT I
P.O. Box 1980, Hobbs, NM 88240

P.O. Box 2088

Santa Fe, New Mexico 87504-2088

DISTRICT II
P.O. Drawer DD, Artesia, NM 88210

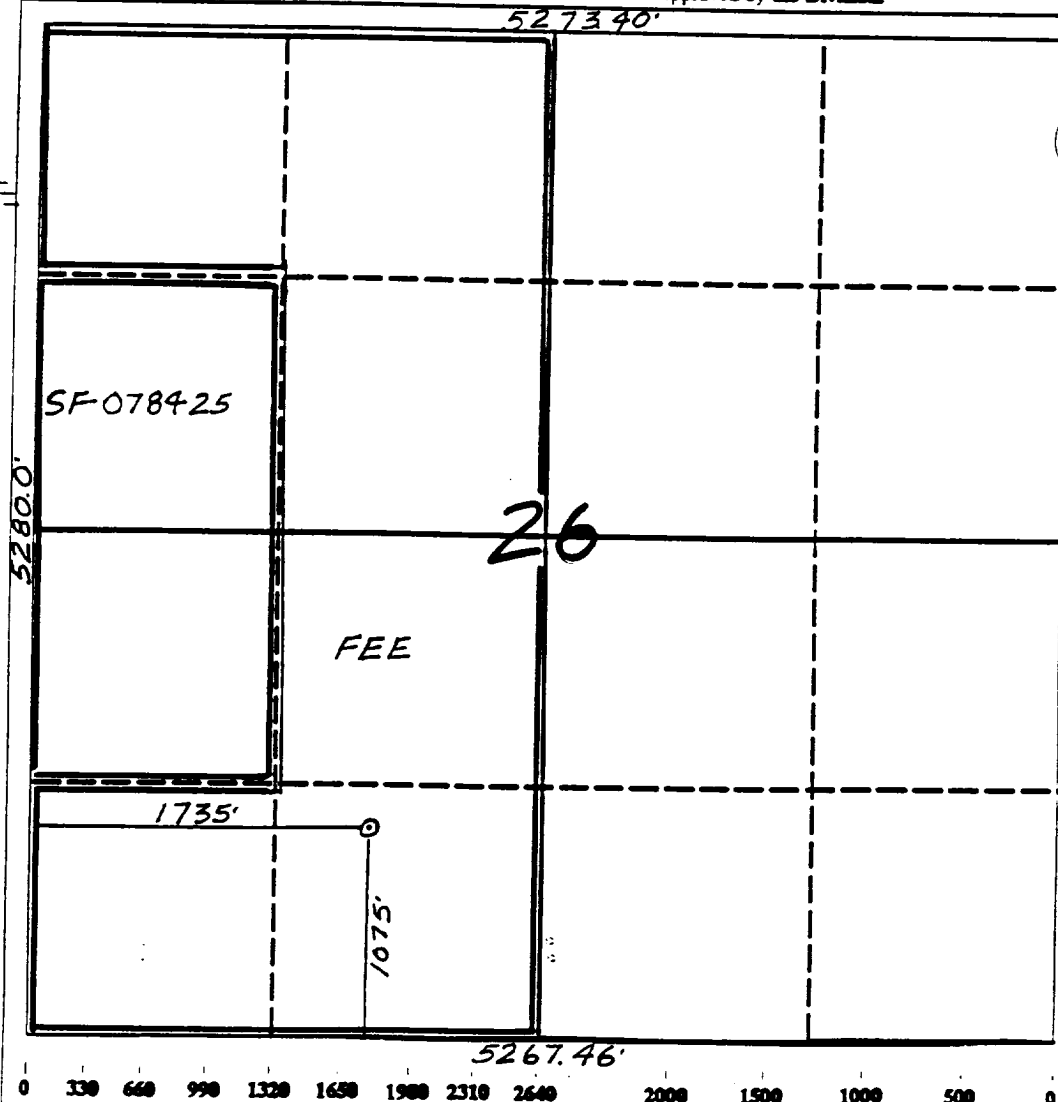
DISTRICT III
1000 Rio Brazos Rd., Aztec, NM 87410

WELL LOCATION AND ACREAGE DEDICATION PLAT

All Distances must be from the outer boundaries of the section

Operator Meridian Oil Inc.			Lease San Juan 29-7 Unit		(Fee)	Well No. 565
Unit Letter N	Section 26	Township 29 North	Range 7 West	County Rio Arriba		
Actual Footage Location of Well: 1075 feet from the South line and 1735 feet from the West line						
Ground level Elev. 6361'		Producing Formation Fruitland Coal		Pool Basin		Dedicated Acreage: 320 Acres

1. Outline the acreage dedicated to the subject well by colored pencil or hectare marks on the plat below.
2. If more than one lease is dedicated to the well, outline each and identify the ownership thereof (both as to working interest and royalty).
3. If more than one lease of different ownership is dedicated to the well, have the interest of all owners been consolidated by communitization, unitization, force-pooling, etc.?
☒ Yes ☐ No If answer is "yes" type of consolidation unitization
If answer is "no" list the owners and tract descriptions which have actually been consolidated. (Use reverse side of this form if necessary.)
No allowable will be assigned to the well until all interests have been consolidated (by communitization, unitization, forced-pooling, or otherwise) or until a non-standard unit, eliminating such interest, has been approved by the Division.



OPERATOR CERTIFICATION

I hereby certify that the information contained herein is true and complete to the best of my knowledge and belief.

Peggy Bradfield
Signature

Peggy Bradfield

Printed Name

Regulatory Affairs

Position

Meridian Oil Inc.

Company

7-6-90

Date

SURVEYOR CERTIFICATION

I hereby certify that the well location shown on this plat was plotted from field notes of actual surveys made by me or under my supervision, and that the same is true and correct to the best of my knowledge and belief.

7-5-90

Date Surveyed

Neale C. Edwards
Signature

Professional Surveyor

NEW MEXICO

6857

6857

REGISTERED LAND SURVEYOR

Neale C. Edwards

Certificate No.