

30039-24567

UNITED STATES
DEPARTMENT OF THE INTERIOR
BUREAU OF LAND MANAGEMENT

APPLICATION FOR PERMIT TO DRILL, DEEPEN, OR PLUG BACK

1a. TYPE OF WORK DRILL	5. LEASE NUMBER SF-078424
1b. TYPE OF WELL GAS	6. IF INDIAN, ALL. OR TRIBE NAME
2. OPERATOR EL PASO NATURAL GAS CO. <i>A Nevada Land Co. Inc.</i>	7. UNIT AGREEMENT NAME SAN JUAN 29-7 UNIT
3. ADDRESS & PHONE NO. OF OPERATOR P O BOX 4289 FARMINGTON, NM 87499	8. FARM OR LEASE NAME SAN JUAN 29-7 UNIT
4. LOCATION OF WELL 1510'S 965'W	9. WELL NO. 526
10. FIELD, POOL, OR WILDCAT BASIN FRUITLAND COAL	11. SEC. T. R. M OR BLK. SEC. 21 T29N R07W NMPM
14. DISTANCE IN MILES FROM NEAREST TOWN 7 MILES FROM GOVERNADOR	12. COUNTY RIO ARRIBA
15. DISTANCE FROM PROPOSED LOCATION 965' TO NEAREST PROPERTY OR LEASE LINE.	13. STATE NM
16. ACRES IN LEASE	17. ACRES ASSIGNED TO WELL w/ 320.00
18. DISTANCE FROM PROPOSED LOCATION TO NEAREST WELL DR. COMPL., OR APPLIED FOR ON THIS LEASE.	19. PROPOSED DEPTH 3623'
20. ROTARY OR CABLE TOOLS ROTARY	21. ELEVATIONS (DF, FT, GR, ETC.) 6852'GL
22. APPROX. DATE WORK WILL START	23. PROPOSED CASING AND CEMENTING PROGRAM

*SEE OPERATIONS PLAN

DRILLING AND CEMENTING OPERATIONS ARE
SUBJECT TO THE FOLLOWING CONDITIONS:
"GENERAL REGULATIONS".

24. AUTHORIZED BY: *Don Bradfield*
REGULATORY AFFAIRS

10-7-89
DATE

PERMIT NO. _____ APPROVAL DATE _____
APPROVED BY _____ TITLE _____ DATE _____

NOTE: THIS FORMAT IS ISSUED IN LIEU OF US BLM FORM 3160-3.

Oct 23 1989
John Shella
AREA MANAGER

Submit to Appropriate
District Office
State Lease - 4 copies
Fee Lease - 3 copies

State of New Mexico
Energy, Minerals and Natural Resources Department

Form C-102
Revised 1-1-89

OIL CONSERVATION DIVISION

DISTRICT I
P.O. Box 1980, Hobbs, NM 88240

P.O. Box 2088
Santa Fe, New Mexico 87504-2088

DISTRICT II
P.O. Drawer DD, Artesia, NM 88210

DISTRICT III
1000 Rio Brazos Rd., Aztec, NM 87410

WELL LOCATION AND ACREAGE DEDICATION PLAT

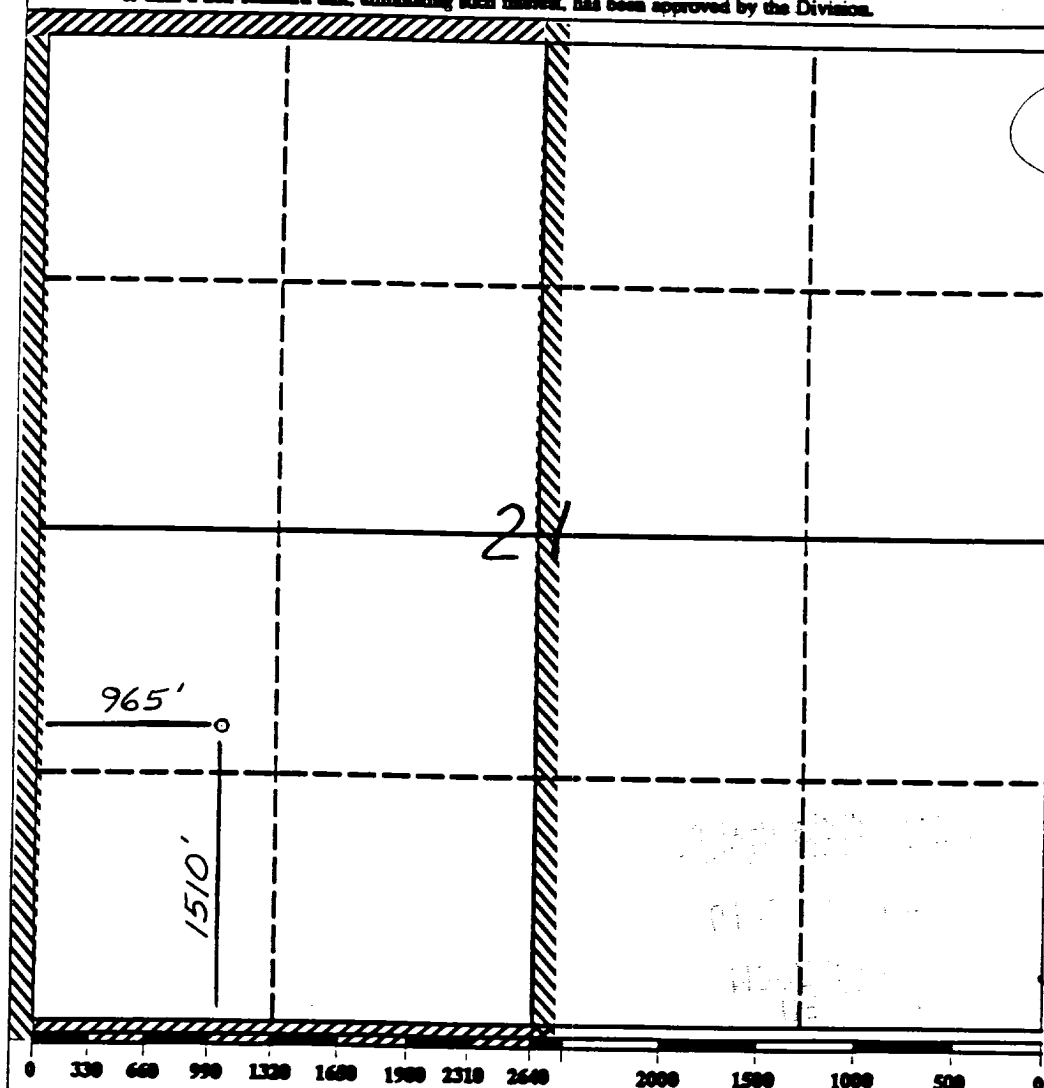
All Distances must be from the outer boundaries of the section

Operator El Paso Natural Gas <i>W. O. Wright</i>		Lease (SF-078424) San Juan 29-7 Unit		Well No. 526
Unit L	Section 21	Township 29 North	Range 7 West	County Rio Arriba
Actual Footage Location of Well: 1510 feet from the South line and 965 feet from the West line				
Ground level Elev. 6852'		Producing Formation Fruitland Coal	Pool Basin	Dedicated Acreage: 320 Acres

1. Outline the acreage dedicated to the subject well by colored pencil or machine marks on the plat below.
2. If more than one lease is dedicated to the well, outline each and identify the ownership thereof (both as to working interest and royalty).
3. If more than one lease of different ownership is dedicated to the well, have the interest of all owners been consolidated by communitization, unitization, force-pooling, etc.?
☒ Yes ☐ No If answer is "yes" type of consolidation unitization

If answer is "no" list the owners and tract descriptions which have actually been consolidated. (Use reverse side of this form if necessary.)

No allowable will be assigned to the well until all interests have been consolidated (by communitization, unitization, forced-pooling, or otherwise) or until a non-standard unit, eliminating such interest, has been approved by the Division.



OPERATOR CERTIFICATION

I hereby certify that the information contained herein is true and complete to the best of my knowledge and belief.

Peggy Bradfield
Signature
Peggy Bradfield

Printed Name
Regulatory Affairs

Position
El Paso Natural Gas

Company
10 7-89

Date

SURVEYOR CERTIFICATION

I hereby certify that the well location shown on this plat was plotted from field notes of actual surveys made by me or under my supervision, and that the same is true and correct to the best of my knowledge and belief. 9-18-89

Date Surveyed
Neal C. Edwards

Signature of Seal of
Professional Surveyor

Neal C. Edwards
REGISTERED LAND SURVEYOR
Certificate No. 6857

Well Name: 526 SAN JUAN 29-7 UNIT 1510'S 965'W
 Sec. 21 T29N R07W RIO ARRIBA NEW MEXICO
 BASIN FRUITLAND COAL Elevation 6852'GL

Formation tops: Surface- SAN JOSE
 Ojo Alamo- 2622
 Kirtland- 2797
 Fruitland- 3372
 Fruitland Coal Top- 3538
 Fruitland Coal Base- 3643
 Total Depth- 3643
 Pictured Cliffs- 3645

Logging Program: Mud logs from 3372 to total depth.

Mud Program:	Interval	Type	Weight	Visc.	Fl. Loss
	0 - 200	Spud	8.4 - 8.9	40-50	no control
	200 - 3643	Non-dispersed	8.4 - 9.5	30-60	no control

Casing Program:	Hole Size	Depth Interval	Csg. Size	Weight	Grade
	12 1/4"	0 - 200	8 5/8"	24.0#	K-40
	7 7/8"	0 - 3643	5 1/2"	15.5#	K-55
Tubing Program:		0 - 3643	2 3/8"	4.7#	J-55

Float Equipment: 8 5/8" surface casing - saw tooth guide shoe.

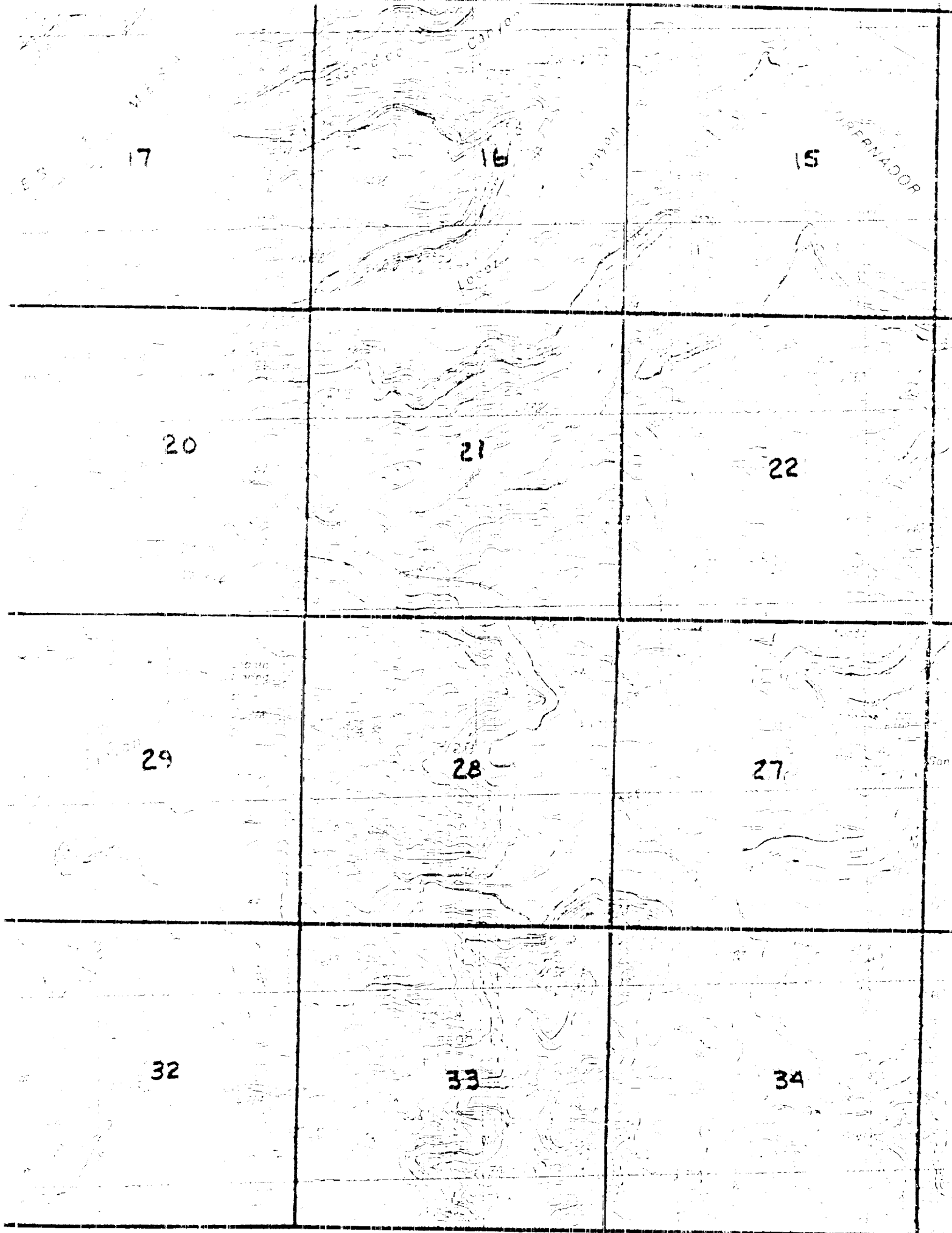
5 1/2" production casing - float shoe on bottom.
 Three centralizers run every other joint above shoe.

Wellhead Equipment: 8 5/8" x 5 1/2" x 2 3/8" x 11" 3000 psi xmas tree assembly

Cementing:

8 5/8" surface casing - cement with 140 sacks of class "B" cement with 1/4# flocculent/sack and 3% calcium chloride (165 cu ft. of slurry, 100% excess to circulate to surface). WOC 12 hours. Test casing to 600 psi for 30 minutes.

5 1/2" production casing - lead with 122 sacks of 65/35 class "B" poz with 6% gel, 2% calcium chloride and 1/2 cu.ft. Perlite/sack (10.3 gallons of water/sack) tail with 100 sacks of class "B" with 2% calcium chloride. 354 cu ft. of slurry, 100% excess to cover the Ojo Alamo. Run temperature survey at 8 hours. WOC 12 hours. Test casing to 1500 psi for 30 minutes.



17

16

15

20

21

22

29

28

27

32

33

34