

UNITED STATES
DEPARTMENT OF THE INTERIOR
BUREAU OF LAND MANAGEMENT

APPLICATION FOR PERMIT TO DRILL, DEEPEN, OR PLUG BACK

1a. TYPE OF WORK DRILL	5. LEASE NUMBER SF-078919
1b. TYPE OF WELL GAS	6. IF INDIAN, ALL. OR TRIBE NAME
2. OPERATOR EL PASO NATURAL GAS CO. <i>Mesa Verde Oil Inc. 14538</i>	7. UNIT AGREEMENT NAME SAN JUAN 29-7 UNIT
3. ADDRESS & PHONE NO. OF OPERATOR P O BOX 4289 FARMINGTON, NM 87499	8. FARM OR LEASE NAME 7465 SAN JUAN 29-7 UNIT
4. LOCATION OF WELL 1480' FSL 1200' FWL	9. WELL NO. 546 <i>W/316.70</i>
14. DISTANCE IN MILES FROM NEAREST TOWN 4 MILES N/E NAVAJO CITY	10. FIELD, POOL, OR WILDCAT BASIN FRUITLAND COAL 71629
15. DISTANCE FROM PROPOSED LOCATION 1200' TO NEAREST PROPERTY OR LEASE LINE.	11. SEC. T. R. M OR BLK. L SEC. 4 T29N R07W NMPM
16. ACRES IN LEASE 720	12. COUNTY RIO ARRIBA
17. ACRES ASSIGNED TO WELL 316.70	13. STATE NM
18. DISTANCE FROM PROPOSED LOCATION TO NEAREST WELL DR. 200' COMPL., OR APPLIED FOR ON THIS LEASE.	19. PROPOSED DEPTH 2943'
20. ROTARY OR CABLE TOOLS ROTARY	21. ELEVATIONS (DF, FT, GR, ETC.) 6110' GL
22. APPROX. DATE WORK WILL START	

This section is subject to technical and
procedural review pursuant to 43 CFR 3165.3
and appeal pursuant to 43 CFR 3165.4.

DRILLING OPERATIONS AUTHORIZATIONS ARE
SUBJECT TO COMPLIANCE WITH ATTACHED
"GENERAL REQUIREMENTS".

23. PROPOSED CASING AND CEMENTING PROGRAM

*SEE OPERATIONS

RECEIVED

AUG 20 1990

24. AUTHORIZED BY: *J. Caldwell*

REG. DRILLING ENGR. OIL CON. DIV.
DIST. 3

8/2/90
DATE

PERMIT NO. _____ APPROVAL DATE _____

APPROVED BY _____ TITLE _____ DATE _____

NOTE: THIS FORMAT IS ISSUED IN LIEU OF US BLM FORM 3160-3.

NMOCD

Submit to Appropriate
District Office
State Lease - 4 copies
Fee Lease - 3 copies

State of New Mexico
Energy, Minerals and Natural Resources Department

Form C-102
Revised 1-1-89

OIL CONSERVATION DIVISION

DISTRICT I
P.O. Box 1980, Hobbs, NM 88240

P.O. Box 2088

Santa Fe, New Mexico 87504-2088

DISTRICT II
P.O. Drawer DD, Artesia, NM 88210

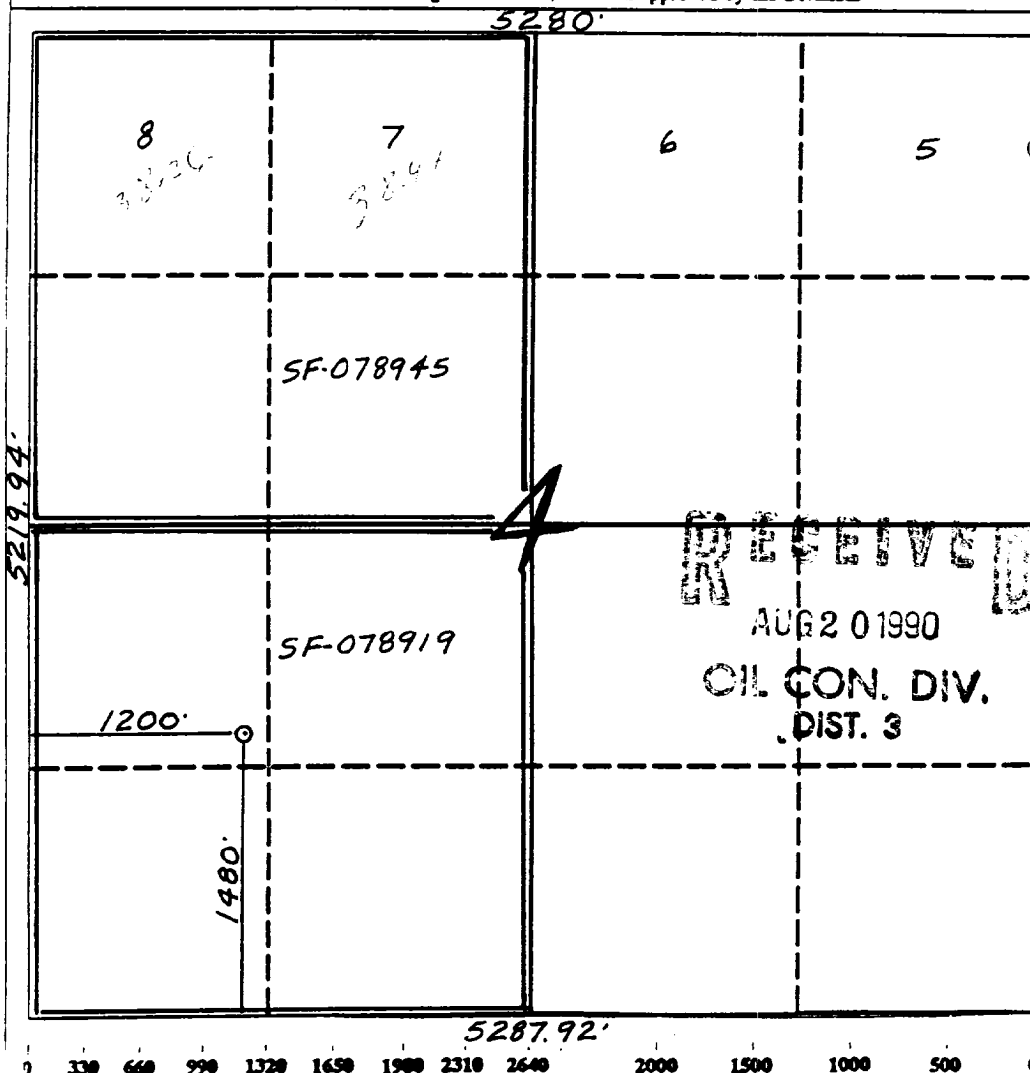
DISTRICT III
1000 Rio Brazos Rd., Aztec, NM 87410

WELL LOCATION AND ACREAGE DEDICATION PLAT

All Distances must be from the outer boundaries of the section

Operator <i>El Paso Natural Gas</i>		Lease (SF-078919)		Well No. 546
Unit Letter L	Section 4	Township 29 North	Range 7 West	County NMPM Rio Arriba
Actual Footage Location of Well: 1480 feet from the South line and 1200 feet from the West line				
Ground level Elev. 6110'	Producing Formation Fruitland Coal		Pool Basin	Dedicated Acreage: 316.70 Acres

- Outline the acreage dedicated to the subject well by colored pencil or hatchure marks on the plat below.
 - If more than one lease is dedicated to the well, outline each and identify the ownership thereof (both as to working interest and royalty).
 - If more than one lease of different ownership is dedicated to the well, have the interest of all owners been consolidated by communitization, unitization, force-pooling, etc.?
☒ Yes ☐ No If answer is "yes" type of consolidation unitization
If answer is "no" list the owners and tract descriptions which have actually been consolidated. (Use reverse side of this form if necessary).
- No allowable will be assigned to the well until all interests have been consolidated (by communitization, unitization, forced-pooling, or otherwise) or until a non-standard unit, eliminating such interest, has been approved by the Division.



OPERATOR CERTIFICATION

I hereby certify that the information contained herein is true and complete to the best of my knowledge and belief.

Signature
Peggy Bradfield

Printed Name
Regulatory Affairs

Position
El Paso Natural Gas

Company
7-31-90

Date

SURVEYOR CERTIFICATION

I hereby certify that the well location shown on this plat was plotted from field notes of actual surveys made by me or under my supervision, and that the same is true and correct to the best of my knowledge and belief.

6-11-90

Date Surveyed

Signature
Professional Surveyor

Certificate
Neale G. Edwards

Well Name: 546 SAN JUAN 29-7 UNIT
 Sec. 4 T29N R07W
 BASIN FRUITLAND COAL

1480' FSL 1200' FWL
 RIO ARriba NEW MEXICO
 Elevation 6110' GL

Formation tops: Surface- SAN JOSE
 Ojo Alamo- 1920
 Kirtland- 2110
 Fruitland- 2590
 Fruitland Coal Top- 2718
 Fruitland Coal Base- 2942
 Pictured Cliffs- 2943

Total Depth- 2943

Logging Program: Mud logs from 2590 to total depth.

Mud Program:	Interval	Type	Weight	Visc.	Fl. Loss
	0 - 200	Spud	8.4 - 8.9	40-50	no control
	200 - 2943	Non-dispersed	8.4 - 9.5	30-60	no control

Casing Program:	Hole Size	Depth Interval	Csg. Size	Weight	Grade
	12 1/4"	0 - 200	9 5/8"	36.0#	K-55
	8 3/4"	0 - 2943	5 1/2"	15.5#	K-55
Tubing Program:		0 - 2943	2 3/8"	4.7#	J-55

Float Equipment: 9 5/8" surface casing - saw tooth guide shoe. Centralizers will be run in accordance with Onshore Order #2.

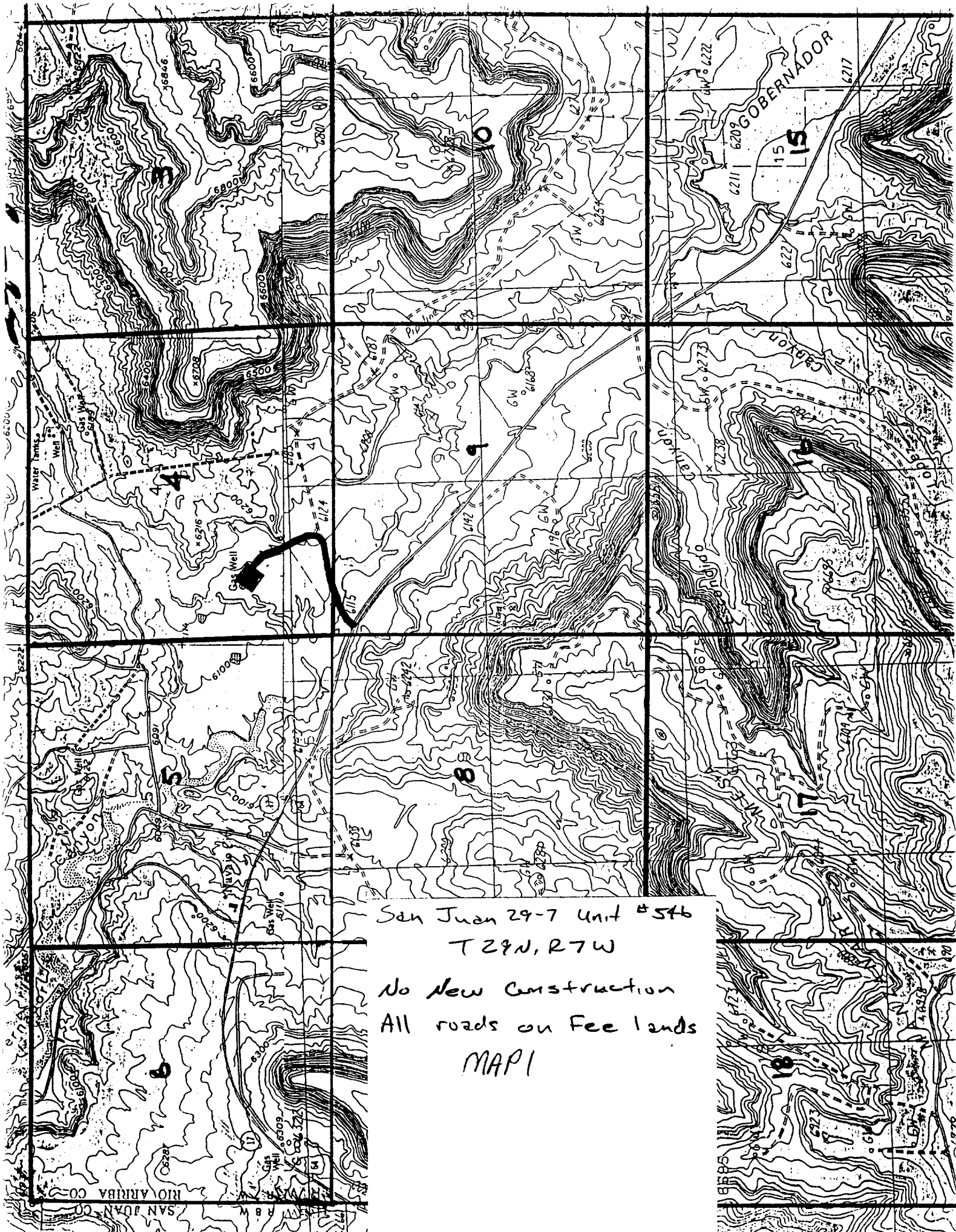
5 1/2" production casing - float shoe on bottom. Three centralizers run every other joint above shoe. Two turbolizing type centralizers - one below and one into the base of the Ojo Alamo @ 2110'. Standard centralizers thereafter every fourth joint up to the base of the surface pipe.

Wellhead Equipment: 9 5/8" x 5 1/2" x 2 3/8" x 11" 3000 psi xmas tree assembly

Cementing:

9 5/8" surface casing - cement with 160 sacks of class "B" cement with 1/4# flocculent/sack and 3% calcium chloride (189 cu ft. of slurry, 200% excess to circulate to surface). WOC 12 hours. Test casing to 600 psi for 30 minutes.

5 1/2" production casing - lead with 712 sacks of 65/35 class "B" poz with 6% gel, 2% calcium chloride and 1/2 cu.ft. Perlite/sack (10.3 gallons of water/sack) tail with 100 sacks of class "B" with 2% calcium chloride. 1492 cu ft. of slurry, 100% excess to circulate to surface. If hole conditions permit, a 600 ft spacer will be run ahead of the cement slurry to avoid mud contamination of the cement. WOC 12 hours. If cement does not circulate to surface, a temperature log will be run after 8 hours to determine TOC.



San Juan 29-7 Unit #546
T29N, R7W

No New Construction
All roads on Fee lands
MAP 1