

30-039-24895

UNITED STATES
DEPARTMENT OF THE INTERIOR
BUREAU OF LAND MANAGEMENT

APPLICATION FOR PERMIT TO DRILL, DEEPEN, OR PLUG BACK

1a. TYPE OF WORK DRILL	5. LEASE NUMBER NM-05219
1b. TYPE OF WELL GAS	6. IF INDIAN, ALL. OR TRIBE NAME
2. OPERATOR EL PASO NATURAL GAS CO.	7. UNIT AGREEMENT NAME SAN JUAN 29-7 UNIT
3. ADDRESS & PHONE NO. OF OPERATOR P O BOX 4289 FARMINGTON, NM 87499	8. FARM OR LEASE NAME 7465 SAN JUAN 29-7 UNIT
4. LOCATION OF WELL 790' FNL 1210' FEL	9. WELL NO. 553
14. DISTANCE IN MILES FROM NEAREST TOWN 5 MILES FROM NAVAJO CITY	10. FIELD, POOL, OR WILDCAT BASIN FRUITLAND COAL 71629
15. DISTANCE FROM PROPOSED LOCATION 790' TO NEAREST PROPERTY OR LEASE LINE.	11. SEC. T. R. M OR BLK. SEC. 14 T29N R07W NMPM
16. ACRES IN LEASE	12. COUNTY RIO ARRIBA
17. ACRES ASSIGNED TO WELL E/ 320.00	13. STATE NM
18. DISTANCE FROM PROPOSED LOCATION TO NEAREST WELL DR. 350' COMPL., OR APPLIED FOR ON THIS LEASE.	19. PROPOSED DEPTH 3168'
20. ROTARY OR CABLE TOOLS ROTARY	21. ELEVATIONS (DF, FT, GR, ETC.) 6315' GL
22. APPROX. DATE WORK WILL START	23. PROPOSED CASING AND CEMENTING PROGRAM

*SEE OPERATIONS

RECEIVED

AUG 28 1990

24. AUTHORIZED BY: Charles J. JWC
REG. DRILLING ENGR. OIL CON. DIV
DIST. 3

8/17/90
DATE

PERMIT NO. _____ APPROVAL DATE _____

APPROVED BY _____ TITLE _____ DATE _____

AUG 24 1990

NOTE: THIS FORMAT IS ISSUED IN LIEU OF US BLM FORM 3160-3, Ken Townsend

Submit to Appropriate
District Office
State Lease - 4 copies
Fee Lease - 3 copies

State of New Mexico
Energy, Minerals and Natural Resources Department

Form C-102
Revised 1-1-89

OIL CONSERVATION DIVISION

DISTRICT I
P.O. Box 1980, Hobbs, NM 88240

P.O. Box 2088

Santa Fe, New Mexico 87504-2088

DISTRICT II
P.O. Drawer DD, Artesia, NM 88210

DISTRICT III
1000 Rio Brazos Rd., Aztec, NM 87410

WELL LOCATION AND ACREAGE DEDICATION PLAT

All Distances must be from the outer boundaries of the section

Operator El Paso Natural Gas			Lease (NM-05219) San Juan 29-7 Unit		Well No. 553
Unit Letter A	Section 14	Township 29 North	Range 7 West	County NMPM Rio Arriba	
Actual Footage Location of Well: 790 feet from the North line and 1210 feet from the East line					
Ground level Elev. 6315'	Producing Formation Fruitland Coal		Pool Basin		Dedicated Acreage: 320 Acres

1. Outline the acreage dedicated to the subject well by colored pencil or hectare marks on the plat below.

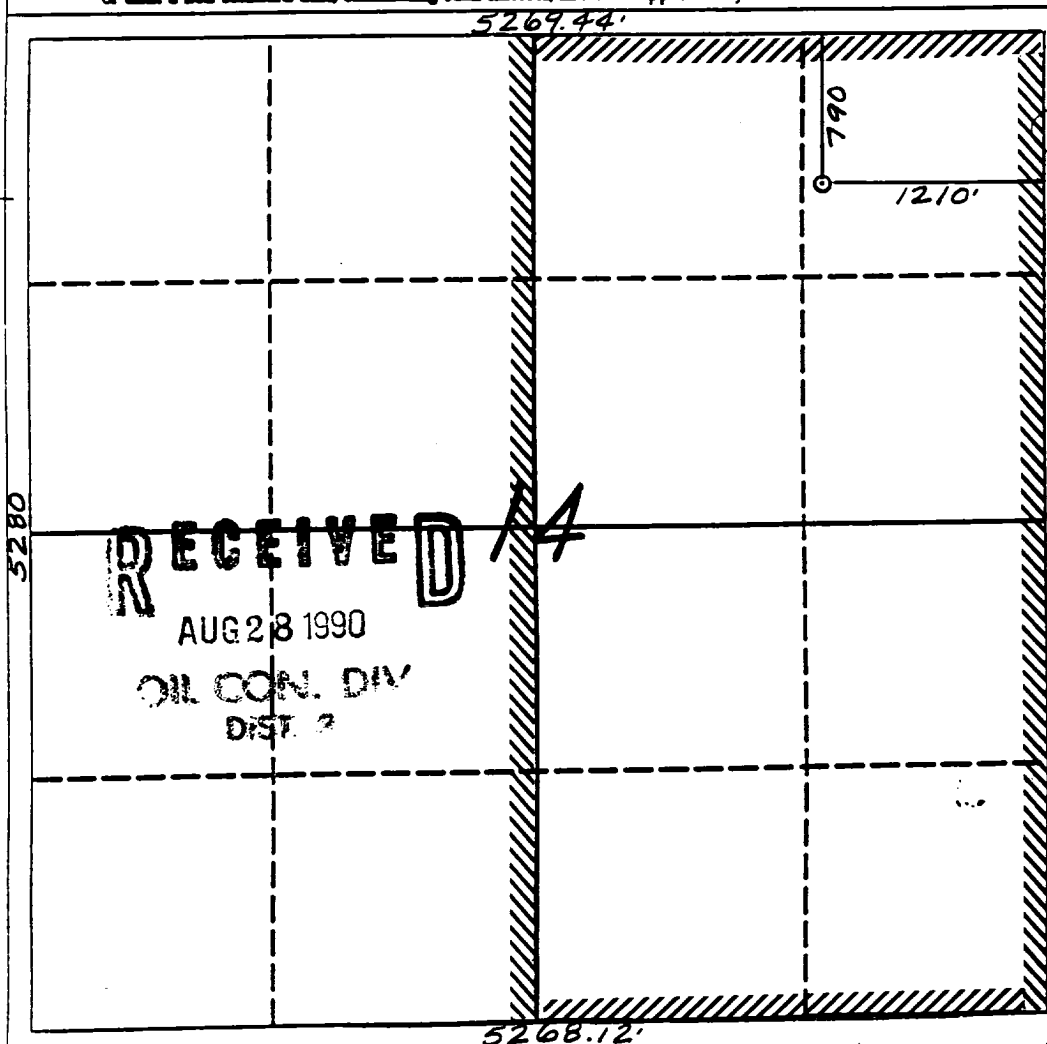
2. If more than one lease is dedicated to the well, outline each and identify the ownership thereof (both as to working interest and royalty).

3. If more than one lease of different ownership is dedicated to the well, have the interest of all owners been consolidated by communitization, unitization, force-pooling, etc.?

☒ Yes ☐ No If answer is "yes" type of consolidation unitization

If answer is "no" list the owners and tract descriptions which have actually been consolidated. (Use reverse side of this form if necessary.)

No allowable will be assigned to the well until all interests have been consolidated (by communitization, unitization, forced-pooling, or otherwise) or until a non-standard unit, eliminating such interest, has been approved by the Division.



OPERATOR CERTIFICATION

I hereby certify that the information contained herein is true and complete to the best of my knowledge and belief.

Signature Peggy Bradford

Printed Name
Peggy Bradford

Position
Regulatory Affairs

Company
El Paso Natural Gas

Date
8-17-90

SURVEYOR CERTIFICATION

I hereby certify that the well location shown on this plat was plotted from field notes or actual surveys made by me or under my supervision, and that the same is true and correct to the best of my knowledge and belief.

6-20-90

Date Surveyed

Signature Neale C. Edwards
Professional Surveyor



Certificate No. **6857**
Neale C. Edwards

Well Name: 553 SAN JUAN 29-7 UNIT
 Sec. 14 T29N R07W
 BASIN FRUITLAND COAL

790'FNL 1210'FEL
 RIO ARRIBA NEW MEXICO
 Elevation 6315'GL

Formation tops: Surface- San Jose
 Ojo Alamo- 2205
 Kirtland- 2395
 Fruitland- 2820
 Fruitland Coal Top- 2933
 Fruitland Coal Base- 3167
 Pictured Cliffs- 3169

Intermediate TD- 2913
 Total Depth- 3168

Logging Program: Mud logs from intermediate to total depth.

Mud Program:	Interval	Type	Weight	Visc.	Fl. Loss
	0 - 200	Spud	8.4 - 8.9	40-50	no control
	200 - 2913	Non-dispersed	8.4 - 9.1	30-60	no control
	2913 - 3168	Formation Water	8.4		no control

Casing Program:	Hole Size	Depth Interval	Csg. Size	Weight	Grade
	12 1/4"	0 - 200	9 5/8"	32.3#	H-40
	8 3/4"	0 - 2913	7"	20.0#	K-55
	6 1/4"	2863 - 3168	5 1/2"	15.5#	K-55
Tubing Program:		0 - 3168	2 7/8"	6.5#	J-55

Float Equipment: 9 5/8" surface casing - saw tooth guide shoe. Centralizers will be run in accordance with Onshore Order #2.

7" intermediate casing - guide shoe and self-fill insert float valve. Three centralizers run every other joint above shoe. Run insert float one joint above the guide shoe. Two turbolizing type centralizers - one below and one into the base of the Ojo Alamo @ 2395'. Standard centralizers thereafter every fourth joint up to the base of the surface pipe.

5 1/2" production casing - float shoe on bottom and a pre-drilled liner run to the 7" casing with a minimum 50' overlap. Liner hanger is a double slip grip type.

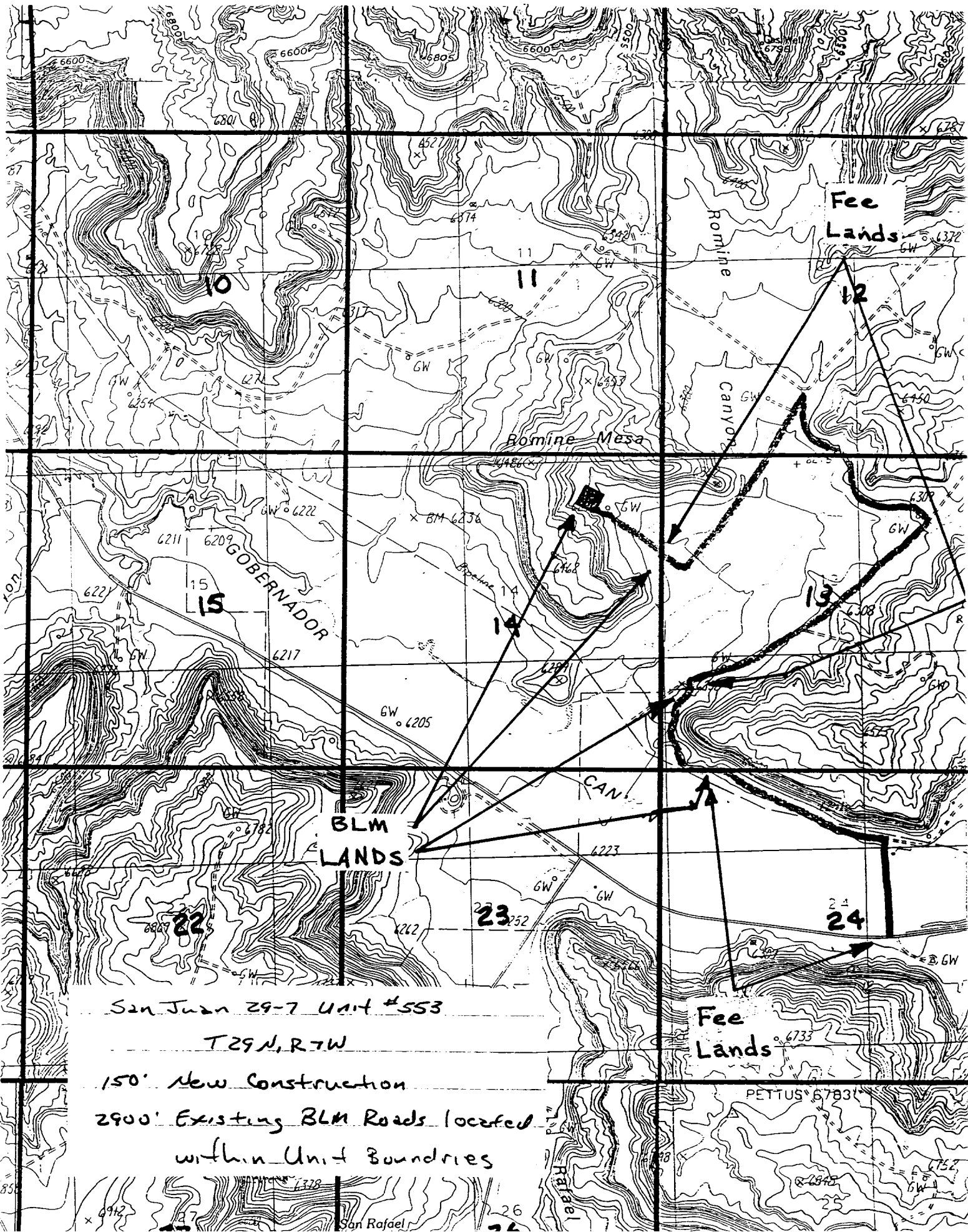
Wellhead Equipment: 9 5/8" x 7" x 2 7/8" x 11" 3000 psi xmas tree assembly.

Cementing:

9 5/8" surface casing - cement with 160 sacks of class "B" cement with 1/4# flocele/sack and 3% calcium chloride (189 cu ft. of slurry, 200% excess to circulate to surface). WOC 12 hours. Test casing to 600 psi for 30 minutes.

7" intermediate casing - lead with 420 sacks of 65/35 class "B" poz with 6% gel, 2% calcium chloride and 1/2 cu ft. Perlite/sack (10.3 gallons of water/sack) tail with 100 sacks of class "B" with 2% calcium chloride. 930 cu ft. of slurry, 110% excess to circulate to surface. If hole conditions permit, a 600 ft spacer will be run ahead of the cement slurry to avoid mud contamination of the cement. WOC 12 hours. If cement does not circulate to surface, a temperature log will be run after 8 hours to determine TOC.

5 1/2" liner - do not cement.



San Juan 29-7 Unit #553

T29N, R7W

150' New Construction
2900' Existing BLM Roads located
within Unit Boundaries