

UNITED STATES
DEPARTMENT OF THE INTERIOR
BUREAU OF LAND MANAGEMENT

Sundry Notices and Reports on Wells

<p>1. Type of Well GAS</p>	<p>5. Lease Number SF-078424</p>
<p>2. Name of Operator Meridian Oil Inc.</p>	<p>6. If Indian, All. or Tribe Name</p>
<p>3. Address & Phone No. of Operator PO Box 4289, Farmington, NM 87499 (505) 326-9700</p>	<p>7. Unit Agreement Name San Juan 29-7 Unit</p>
<p>4. Location of Well, Footage, Sec., T, R, M 1590'N, 955'E Sec.27 T-29-N, R-7-W, NMPM</p>	<p>8. Well Name & Number San Juan 29-7 U #566</p>
	<p>9. API Well No.</p>
	<p>10. Field and Pool ⁹²³⁵⁹ Bsn Ft Coal/Blanco PC</p>
	<p>11. County and State Rio Arriba Co, NM</p>

12. CHECK APPROPRIATE BOX TO INDICATE NATURE OF NOTICE, REPORT, OTHER DATA

Type of Submission	Type of Action
<input checked="" type="checkbox"/> Notice of Intent	<input type="checkbox"/> Abandonment
<input type="checkbox"/> Subsequent Report	<input checked="" type="checkbox"/> Change of Plans
<input type="checkbox"/> Final Abandonment	<input type="checkbox"/> Recompletion
	<input type="checkbox"/> Plugging Back
	<input type="checkbox"/> New Construction
	<input type="checkbox"/> Casing Repair
	<input type="checkbox"/> Non-Routine Fracturing
	<input type="checkbox"/> Altering Casing
	<input type="checkbox"/> Water Shut off
	<input type="checkbox"/> Conversion to Injection

13. Describe Proposed or Completed Operations

It is intended to drill and complete this well as a Basin Fruitland Coal - Blanco Pictured Cliffs commingled dual well. Attached is a revised location plat, operations plan, BOP diagrams and facilities diagram for this well.

RECEIVED
APR 2 1992
OIL CON. DIV
DIST. 3

RECEIVED
BLM
92 MAR 24 PM 3:10
019 FARMINGTON, N.M.

14. I hereby certify that the foregoing is true and correct.

Signed *Debra J. Smith* Title Regulatory Affairs **APPROVED** 3-19-92

(This space for Federal or State Office use)
APPROVED BY _____ Title _____

APPROVED
MAR 31 1992
John S. [Signature]
AREA MANAGER

NMOCD

Submit to Appropriate
District Office
State Lease - 4 copies
Fee Lease - 3 copies

State of New Mexico
Energy, Minerals and Natural Resources Department

Form C-102
Revised 1-1-89

OIL CONSERVATION DIVISION

P.O. Box 2088

Santa Fe, New Mexico 87504-2088

DISTRICT I
P.O. Box 1980, Hobbs, NM 88240

DISTRICT II
P.O. Drawer DD, Artesia, NM 88210

DISTRICT III
1000 Rio Brazos Rd., Aztec, NM 87410

WELL LOCATION AND ACREAGE DEDICATION PLAT

All Distances must be from the outer boundaries of the section

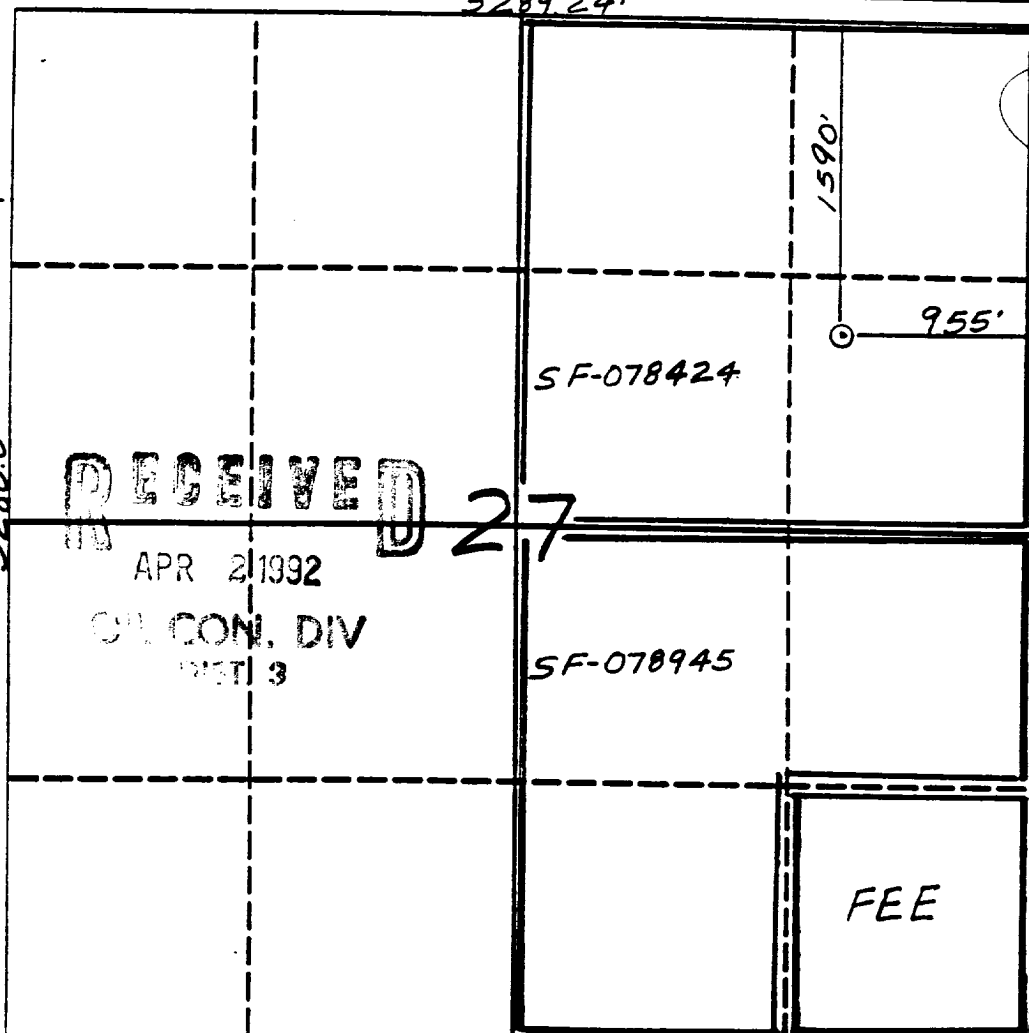
Operator Meridian Oil Inc.			Lease San Juan 29-7 Unit		
Unit Letter H	Section 27	Township 29 North	Range 7 West	County NM	Well No. 566
Actual Footage Location of Well: 1590 feet from the North line and 955 feet from the East line					
Ground level Elev. 6382'		Producing Formation Fruitland Coal/Pic.Cliffs		Pool Basin/Blanco	
Dedicated Acreage: 320/160 Acres					

- Outline the acreage dedicated to the subject well by colored pencil or inkline marks on the plat below.
- If more than one lease is dedicated to the well, outline each and identify the ownership thereof (both as to working interest and royalty).
- If more than one lease of different ownership is dedicated to the well, have the interest of all owners been consolidated by communitization, unitization, force-pooling, etc.?

☒ Yes ☐ No If answer is "yes" type of consolidation unitization

If answer is "no" list the owners and tract descriptions which have actually been consolidated. (Use reverse side of this form if necessary.)

No allowable will be assigned to the well until all interests have been consolidated (by communitization, unitization, force-pooling, or otherwise) or until a non-standard unit, eliminating such interest, has been approved by the Division.



OPERATOR CERTIFICATION

I hereby certify that the information contained herein is true and complete to the best of my knowledge and belief.

Signature
Peggy Bradfield

Printed Name
Regulatory Affairs

Position
Meridian Oil Inc.

Company
3-19-92

Date

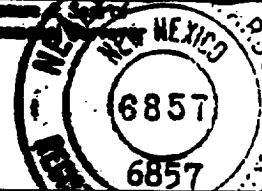
SURVEYOR CERTIFICATION

I hereby certify that the well location shown on this plat was plotted from field notes of actual surveys made by me or under my supervision, and that the same is true and correct to the best of my knowledge and belief.

6-27-90

Date Surveyed

Signature
Professional



Commissioner
Neale C. Edwards

March 20, 1992

OPERATIONS PLAN

Well Name: San Juan 29-7 Unit #566
Location: 1590'FNL, 955'FEL, Section 27, T-29-N, R-7-W
 Rio Arriba County, New Mexico
Formation: Basin Fruitland Coal/Blanco Pictured Cliffs
Elevation: 6382'GL

Formation Tops:	Surface	San Jose
	Ojo Alamo	2301'
	Kirtland	2396'
	Fruitland	2926'
	Fruitland Coal Top	2988'
	Fruitland Coal Base	3183'
	Pictured Cliffs	3187'
	Total Depth	3500'

Logging Program: Mud logs from 2926' to Total Depth.

Mud Program:

<u>Interval</u>	<u>Type</u>	<u>Weight</u>	<u>Vis.</u>	<u>Fluid Loss</u>
0- 200'	Spud	8.4-8.9	40-50	no control
200-3500'	Non-dispersed	8.4-9.5	30-60	no control

Casing Program:

<u>Hole Size</u>	<u>Depth Interval</u>	<u>Csq.Size</u>	<u>Wt.</u>	<u>Grade</u>
12 1/4"	0 - 200'	8 5/8"	24.0#	K-40
7 7/8"	0 - 3500'	4 1/2"	10.5#	K-55

Tubing Program:

0 - 3500'	2 3/8"	4.7#	J-55
-----------	--------	------	------

Float Equipment: 8 5/8" surface casing - saw tooth guide shoe. Centralizers will be run in accordance with Onshore Order #2.

4 1/2" production casing - float shoe on bottom. Three centralizers run every other joint above shoe. Two turbolizing type centralizers - one below and one into the base of the Ojo Alamo @ 2301'. Standard centralizers thereafter every fourth joint up to the base of the surface pipe.

Wellhead Equipment: 8 5/8" x 4 1/2" x 2 3/8" x 11" 3000 psi xmas tree assembly.

March 20, 1992

Cementing:

8 5/8" surface casing - cement with 210 sx Class "B" cement with 1/4# flocele/sx and 3% calcium chloride (250 cu.ft. of slurry, 200% excess to circulate to surface). WOC 12 hrs. Test casing to 600#/30 minutes.

4 1/2" production casing - lead w/780 sx 65/35 Class "B" Poz w/6% gel, 2% calcium chloride and 1/4#/sx flocele. Tail w/100 sx Class "B" w/2% calcium chloride (1500 cu.ft. of slurry, 100% excess to circulate to surface). If hole conditions permit, a 600' spacer will be run ahead of the cement slurry to avoid mud contamination of the cement. WOC 12 hrs. If cement does not circulate to surface, a temperature log will be run after 8 hrs to determine TOC.

BOP and tests:

Surface to TD - 11" 2000 psi (minimum double gate BOP stack (Reference Figure #1 and #2). Prior to drilling out surface casing, test rams to 600#/30 min.

Completion - 6" 2000 psi (minimum) double gate BOP stack (Reference Figure #2). Prior to completion operations, test rams to 3000#/15 min.

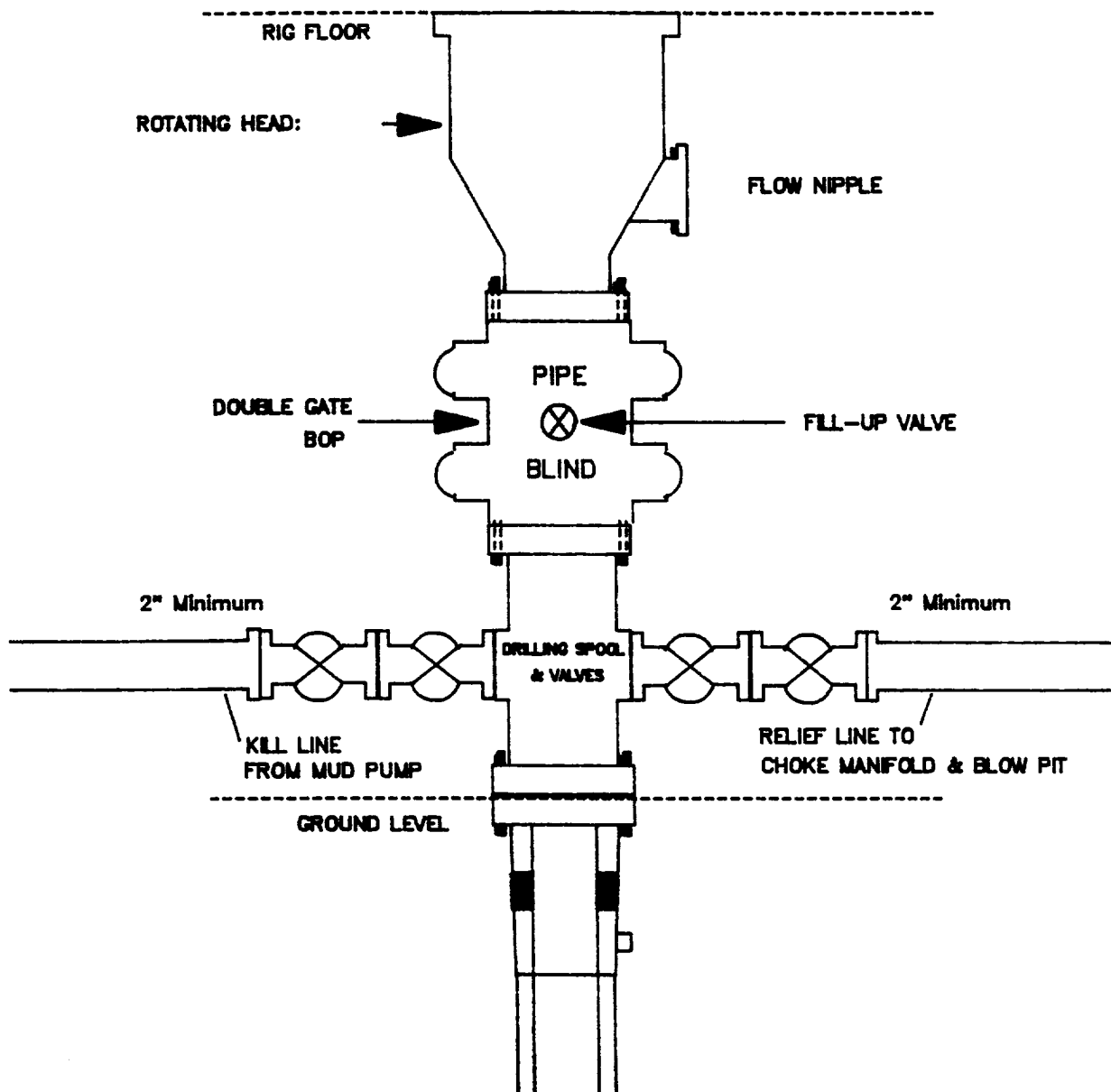
From surface to TD - choke manifold (Reference Figure #3).

Pipe rams will be actuated to least once each day and blind rams actuated once each trip to test proper functioning. An upper kelly cock valve with handle and drill string safety valves to fit each drill string will be maintained and available on the rig floor.

Additional information:

- * The Fruitland Coal and Pictured Cliffs formations will be completed and commingled.
- * Anticipated pore pressure for the Fruitland is 1080 psi and the Pictured Cliffs is 650 psi.
- * This gas is dedicated.
- * The East half of the section is dedicated to the Fruitland Coal and the Northeast quarter of the section is dedicated to the Pictured Cliffs.
- * New casing will be utilized.
- * Cementing contractor will provide BLM with a chronological log including the pump rate and pressure, and the slurry density and volume for all cement jobs.
- * Pipe movement (either rotation or reciprocation) will be done if hole conditions permit.

WINDY OIL INC.
Drilling Rig
BOP Configuration

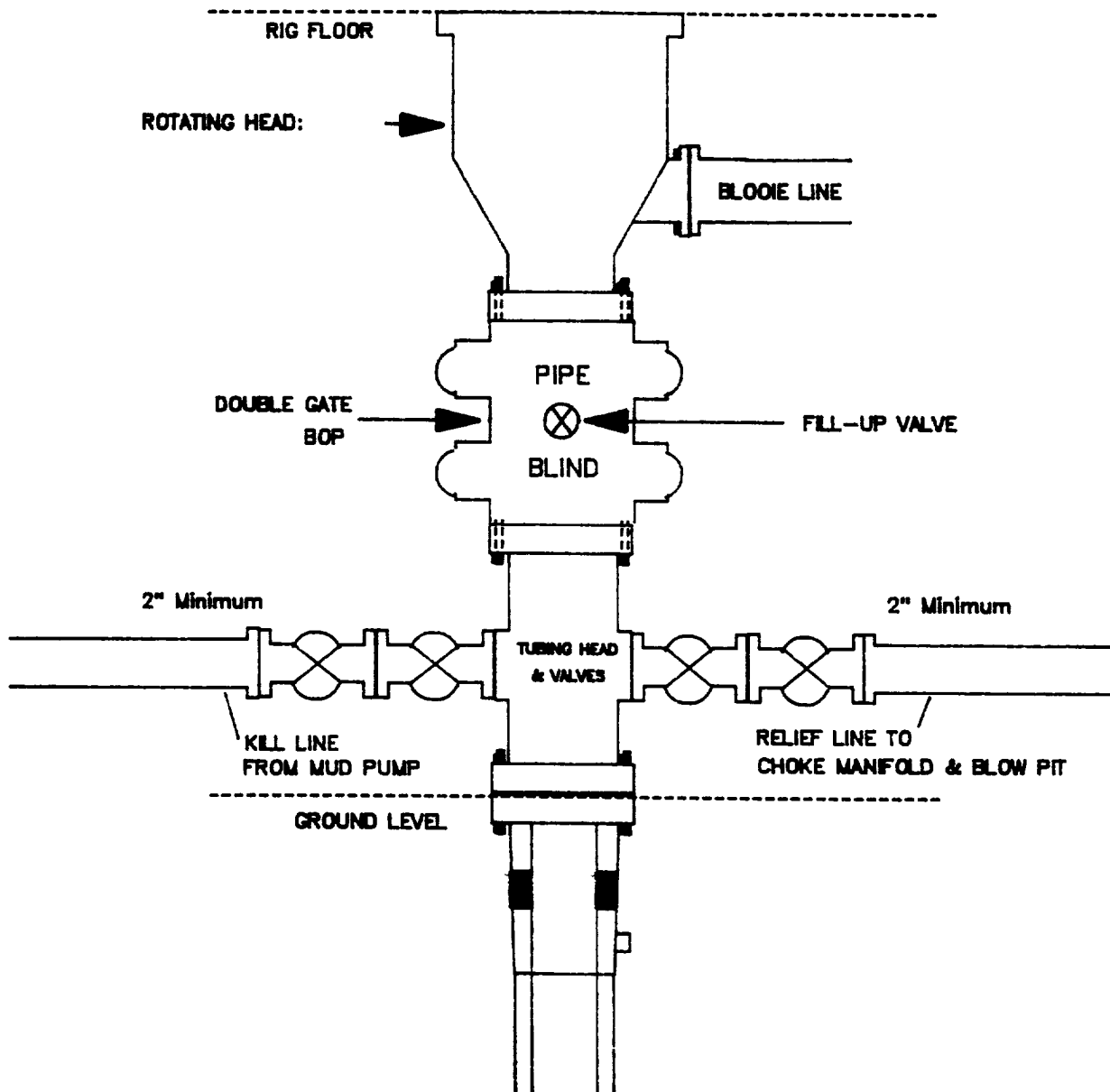


Minimum BOP installation for a typical Pictured Cliffs well from surface to Total Depth. 11" Bore (10" Nominal), 2000psi minimum working pressure double gate BOP to be equipped with blind and pipe rams.

A Schaffer Type 50 or equivalent rotating head to be installed on the top of BOP. All equipment is 2000psi working pressure/or greater.

Figure 14

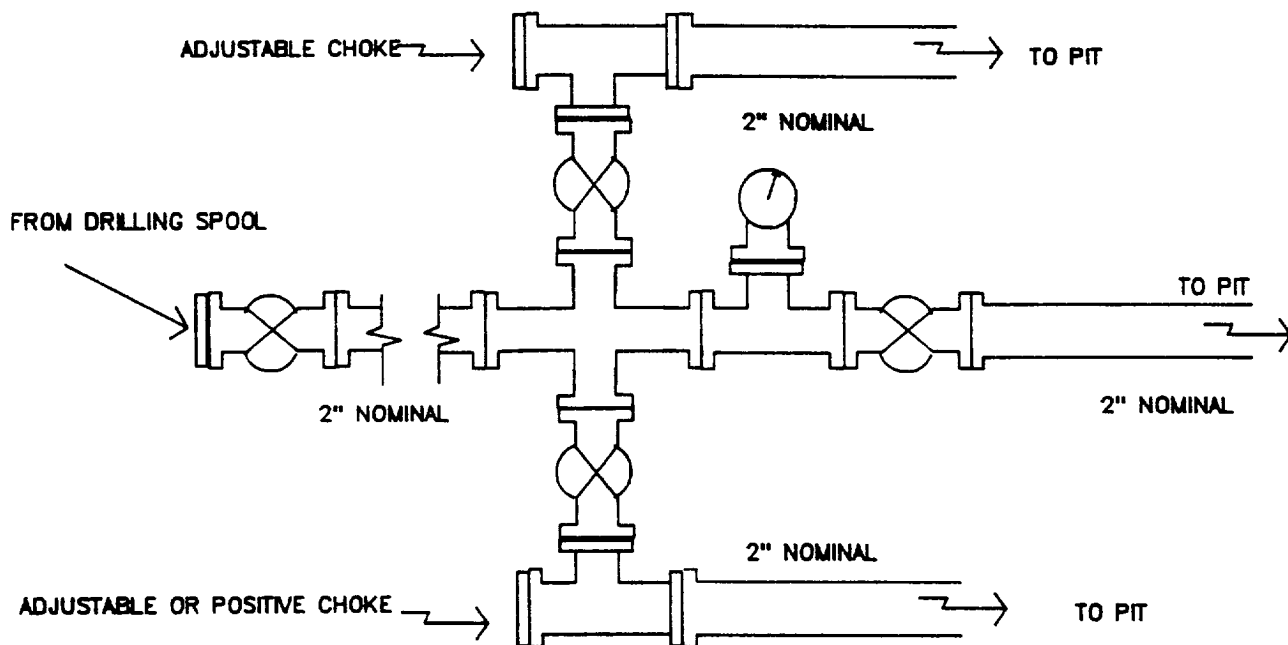
MERIDIAN OIL INC.
Completion Rig
BOP Configuration



Minimum BOP installation for Completion Operations. 7 1/16" Bore (6" Nominal), 2000psi minimum working pressure double gate BOP to be equipped with blind and pipe rams.

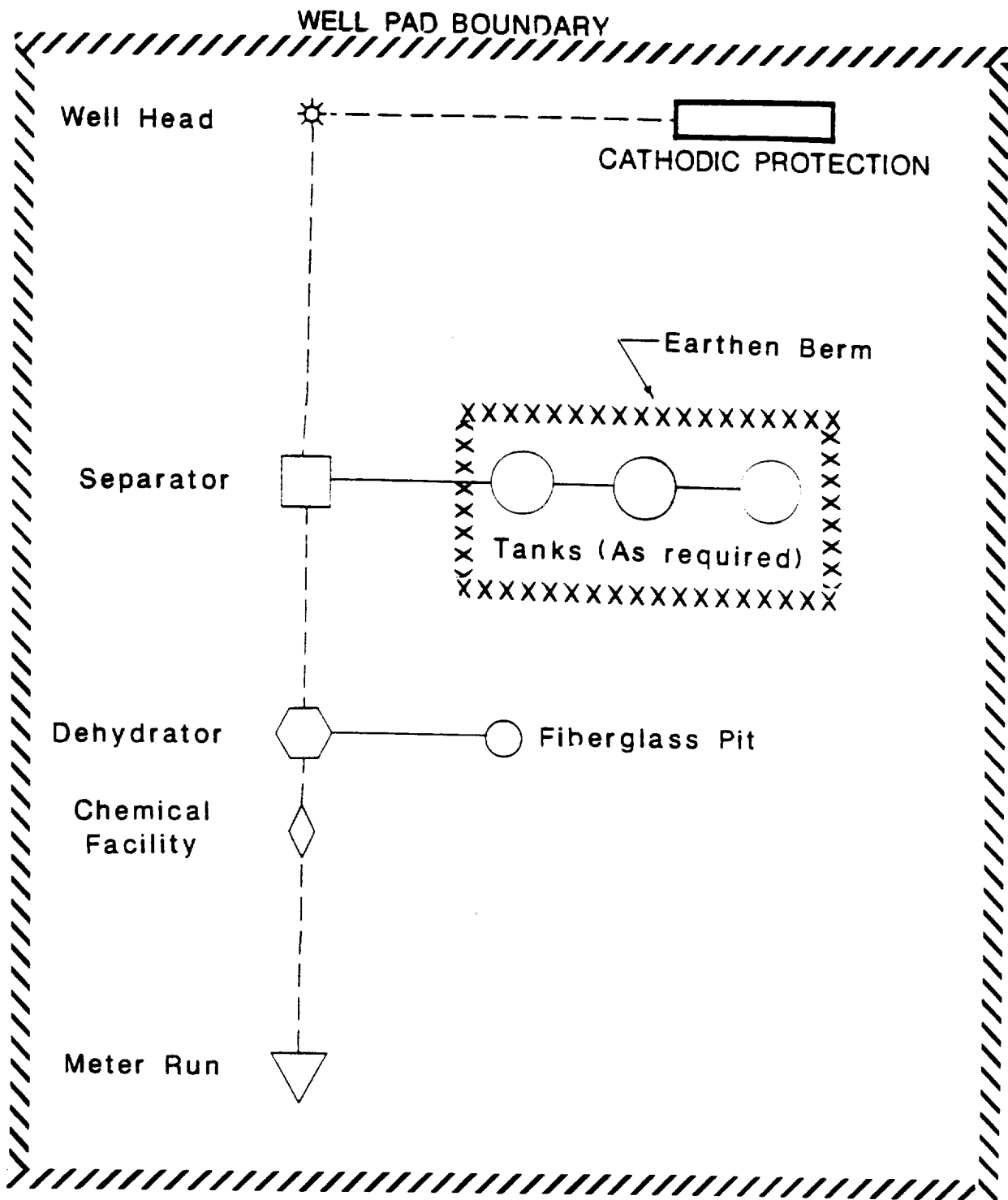
Figure 32

MERIDIAN OIL INC.
Typical Pictured Cliffs Well
Choke Manifold Configuration



Minimum choke manifold installation for a typical Pictured Cliffs well from surface to Total Depth. 2", 2000psi working pressure equipment with two chokes.

Figure #3



MERIDIAN OIL
ANTICIPATED
PRODUCTION FACILITIES
FOR A
PICTURED CLIFFS WELL