

UNITED STATES
DEPARTMENT OF THE INTERIOR
BUREAU OF LAND MANAGEMENT

APPLICATION FOR PERMIT TO DRILL, DEEPEN, OR PLUG BACK

1a. Type of Work DRILL	RECEIVED MAY 30 1997 OIL CON. DIV. DIST. 3	5. Lease Number SF-078424
1b. Type of Well GAS		Unit Reporting Number 891001650A-Dk 8910016500-MV
2. Operator BURLINGTON RESOURCES 14538 Oil & Gas Company	7. Unit Agreement Name San Juan 29-7 Unit	
3. Address & Phone No. of Operator PO Box 4289, Farmington, NM 87499 (505) 326-9700	8. Farm or Lease Name 7465 San Juan 29-7 Unit	
4. Location of Well 845' FNL, 2055' FWL Latitude 36° 42' 58", Longitude 107° 34' 38"	9. Well Number 130M	
14. Distance in Miles from Nearest Town 3 miles to Navajo City	10. Field, Pool, Wildcat 72319 Blanco Mesa Verde/ 71599 Basin Dakota	
15. Distance from Proposed Location to Nearest Property or Lease Line 845'	11. Sec., Twn, Rge, Mer. (NMPM) C Sec 21, T-29N, R-7-W API # 30-039-25684	
16. Acres in Lease	12. County Rio Arriba	
17. Acres Assigned to Well 320 W/2	13. State NM	
18. Distance from Proposed Location to Nearest Well, Drig, Compl, or Applied for on this Lease 1200'	20. Rotary or Cable Tools Rotary	
19. Proposed Depth 7630'	21. Elevations (DF, FT, GR, Etc.) 6343' GR	
22. Proposed Casing and Cementing Program See Operations Plan attached	22. Approx. Date Work will Start 1-21-97	
23. Elevations (DF, FT, GR, Etc.) 6343' GR	23. Proposed Casing and Cementing Program See Operations Plan attached	
24. Authorized by: <u><i>Regulatory/Compliance Administrator</i></u>	24. Date 1-21-97	

PERMIT NO. _____

APPROVAL DATE MAY 20 1997

APPROVED BY *[Signature]*

TITLE *[Signature]*

DATE MAY 20 1997

Archaeological Report to be submitted

Threatened and Endangered Species Report to be submitted

NOTE: This format is issued in lieu of U.S. BLM Form 3160-3

NOTE: an APD was submitted for this well in this 1/4 Section in September 1985

NSL-2078-A (S)

NMOCD

District I
 PO Box 1980, Hobbs, NM 88241-1980
 District II
 PO Drawer DD, Artesia, NM 88211-0719
 District III
 1000 Rio Brazos Rd., Aztec, NM 87410
 District IV
 PO Box 2088, Santa Fe, NM 87504-2088

State of New Mexico
 Energy, Minerals & Natural Resources Department
OIL CONSERVATION DIVISION
 PO Box 2088
 Santa Fe, NM 87504-2088

Form C-102
 Revised February 21, 1994
 Instructions on back
 Submit to Appropriate District Office
 State Lease - 4 Copies
 Fee Lease - 3 Copies

AMENDED REPORT

WELL LOCATION AND ACREAGE DEDICATION PLAT

API Number 30-039-25684		Pool Code 72319/71599	Pool Name Blanco Mesaverde/Basin Dakota
Property Code 7465	Property Name San Juan 29-7 Unit		Well Number 130M
OGRID No. 14538	Operator Name BURLINGTON RESOURCES OIL & GAS COMPANY		Elevation 6343'

10 Surface Location

UL or lot no.	Section	Township	Range	Lot Ids	Feet from the	North/South line	Feet from the	East/West line	County
C	21	29-N	7-W		845	North	2055	West	R.A.

11 Bottom Hole Location If Different From Surface

UL or lot no.	Section	Township	Range	Lot Ids	Feet from the	North/South line	Feet from the	East/West line	County

12 Dedicated Acres MV W/320 DK W/320	13 Joint or Infill	14 Consolidation Code	15 Order No.
--	--------------------	-----------------------	--------------

NO ALLOWABLE WILL BE ASSIGNED TO THIS COMPLETION UNTIL ALL INTERESTS HAVE BEEN CONSOLIDATED OR A NON-STANDARD UNIT HAS BEEN APPROVED BY THE DIVISION

	<p>16</p> <p>5278.68'</p> <p>845'</p> <p>2055'</p> <p>21</p> <p>SF-078424</p> <p>5278.68'</p>	<p>17 OPERATOR CERTIFICATION</p> <p>I hereby certify that the information contained herein is true and complete to the best of my knowledge and belief</p> <p><i>Peggy Bradfield</i> Signature Peggy Bradfield Printed Name Regulatory Administrator Title 1-21-97 Date</p>
	<p>5280.00'</p> <p>5280.00'</p>	<p>18 SURVEYOR CERTIFICATION</p> <p>I hereby certify that the well location shown on this plat was plotted from field notes of actual surveys made by me or under my supervision, and that the same is true and correct to the best of my belief.</p> <p>11/14/96 Date of Survey</p> <p>Signature and Seal of Professional Surveyor Neale C. Edwards 6857 Certificate Number</p>

OPERATIONS PLAN

Well Name: San Juan 29-7 Unit #130M
Location: 845'FNL, 2055'FWL Sec 21, T-29-N, R-7-W
 Rio Arriba County, NM
 Latitude 36° 42' 58", Longitude 107° 34' 38"
Formation: Blanco Mesa Verde/Basin Dakota
Elevation: 6343'GL

<u>Formation Tops:</u>	<u>Top</u>	<u>Bottom</u>	<u>Contents</u>
Surface	San Jose	2204'	
Ojo Alamo	2204'	2704'	aquifer
Fruitland	2704'	3129'	gas
Pictured Cliffs	3129'	3294'	gas
Lewis	3294'	3794'	gas
Intermediate TD	3344'		
Mesa Verde	3794'	4079'	gas
Chacra	4079'	4774'	
Massive Cliff House	4774'	4934'	gas
Menefee	4934'	5294'	gas
Massive Point Lookout	5294'	6549'	gas
Gallup	6549'	7284'	gas
Greenhorn	7284'	7378'	gas
Graneros	7378'	7467'	gas
Dakota	7467'		gas
TD	7630'		

Logging Program:
 Cased hole -Gamma Ray/Neutron

Mud Program:

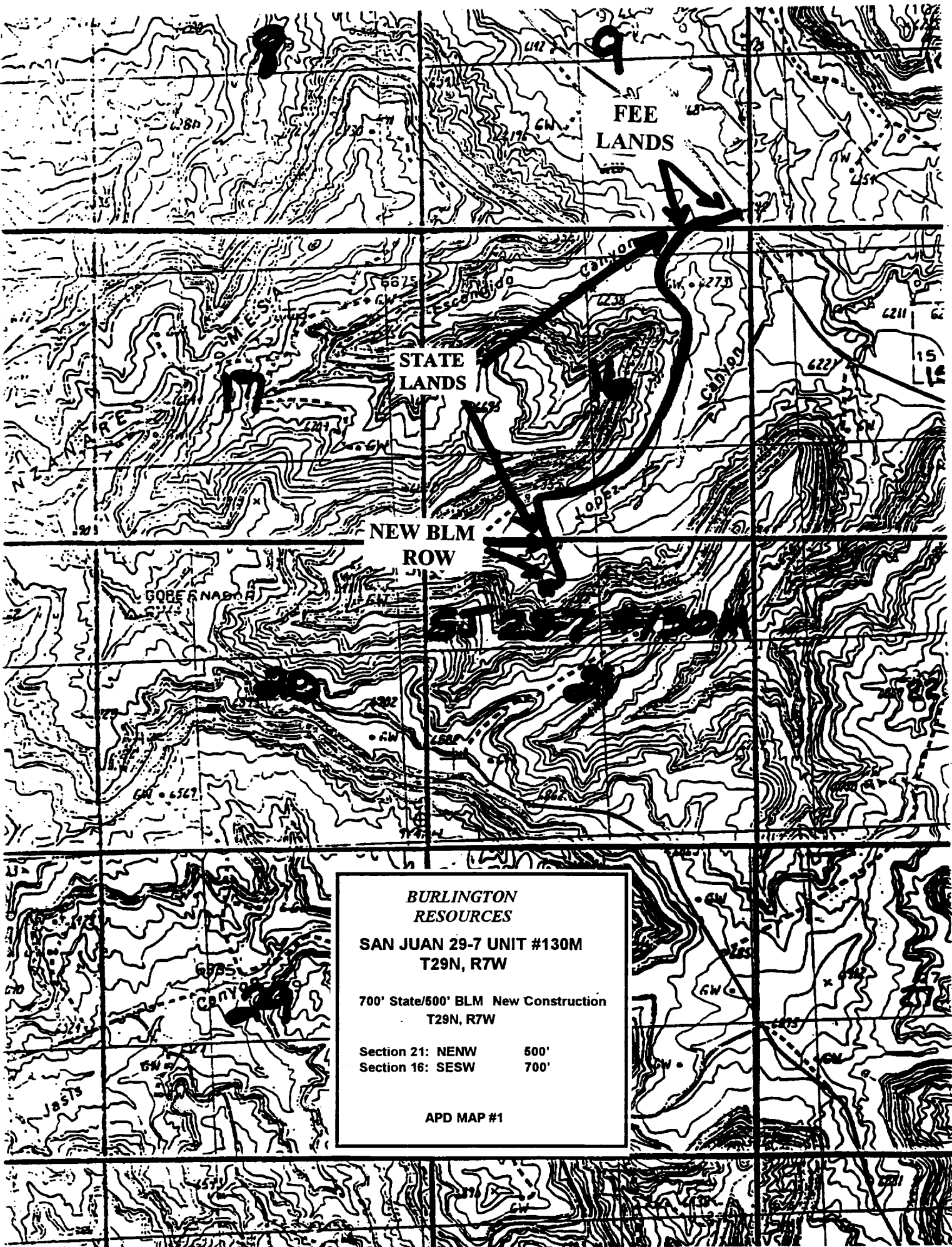
<u>Interval</u>	<u>Type</u>	<u>Weight</u>	<u>Vis.</u>	<u>Fluid Loss</u>
0- 200'	Spud	8.4-9.0	40-50	no control
200-3344'	LSND	8.4-9.0	30-60	no control
3344-7630'	Gas	n/a	n/a	n/a

Pit levels will be visually monitored to detect gain or loss of fluid control.

Casing Program (as listed, the equivalent, or better):

<u>Hole Size</u>	<u>Depth Interval</u>	<u>Csg.Size</u>	<u>Wt.</u>	<u>Grade</u>
12 1/4"	0' - 200'	9 5/8"	32.3#	H-40
8 3/4"	0' - 3344'	7"	20.0#	J-55
6 1/4"	3244' - 6855'	4 1/2"	10.5#	J-55
6 1/4"	6855' - 7630'	4 1/2"	11.6#	J-55

Tubing Program:
 0' - 7630' 2 3/8" 4.70# EUE



FEE
LANDS

STATE
LANDS

NEW BLM
ROW

**BURLINGTON
RESOURCES**

**SAN JUAN 29-7 UNIT #130M
T29N, R7W**

700' State/500' BLM New Construction
T29N, R7W

Section 21: NENW 500'
Section 16: SESW 700'

APD MAP #1