

UNITED STATES  
DEPARTMENT OF THE INTERIOR  
BUREAU OF LAND MANAGEMENT

RECEIVED  
BLM

APPLICATION FOR PERMIT TO DRILL, DEEPEN, OR PLUG BACK

99 JAN -5 PM 1:41

1a. Type of Work DRILL	5. Lease Number SF-078503A Unit Reporting Number 891001650A	
1b. Type of Well GAS	6. If Indian, All. or Tribe	
2. Operator <b>BURLINGTON RESOURCES</b> Oil & Gas Company	7. Unit Agreement Name San Juan 29-7 Unit	
3. Address & Phone No. of Operator PO Box 4289, Farmington, NM 87499  (505) 326-9700	8. Farm or Lease Name San Juan 29-7 Unit 7465 9. Well Number 78B	
4. Location of Well 2365' FNL, 1905' FWL  Latitude 36° 41.8, Longitude 107° 36.7	10. Field, Pool, Wildcat Blanco Mesaverde 11. Sec., Twn, Rge, Mer. (NMPM) F Sec.30, T-29-N, R-7-W API# 30-039- 26062	
14. Distance in Miles from Nearest Town 4 miles from Navajo City	12. County Rio Arriba	13. State NM
15. Distance from Proposed Location to Nearest Property or Lease Line 1905'	17. Acres Assigned to Well 246.88 W/2	
18. Distance from Proposed Location to Nearest Well, Drlg, Compl, or Applied for on this Lease 1300'	20. Rotary or Cable Tools Rotary	
19. Proposed Depth 5570'	21. Elevations (DF, FT, GR, Etc.) 6310' GR	
23. Proposed Casing and Cementing Program See Operations Plan attached	22. Approx. Date Work will Start 12-1-98	
24. Authorized by: <u><i>Duane W. Spencer</i></u> Regulatory/Compliance Administrator	DRILLING OPERATIONS AUTHORIZED ARE SUBJECT TO COMPLIANCE WITH ATTACHED "GENERAL REQUIREMENTS" Date	

PERMIT NO. \_\_\_\_\_ APPROVAL DATE FEB 16 1999  
APPROVED BY /S/ Duane W. Spencer TITLE Team Lead, Petroleum Management DATE \_\_\_\_\_

Archaeological Report to be submitted  
Threatened and Endangered Species Report to be submitted

NOTE: This format is issued in lieu of U.S. BLM Form 3160-3  
Title 18 U.S.C. Section 1001, makes it a crime for any person knowingly and willfully to make to any department or agency of the United States any false, fictitious or fraudulent statements or presentations as to any matter within its jurisdiction.

OK @ R-10987A

District I  
PO Box 1980, Hobbs, NM 88241-1980

State of New Mexico  
Energy, Minerals & Natural Resources Department

Form C-102  
Revised February 21, 1994

District II  
PO Drawer DD, Artesia, NM 88211-0719

OIL CONSERVATION DIVISION  
PO Box 2088  
Santa Fe, NM 87504-2088

Submit to Appropriate District Office  
Instructions on back  
State Lease - 4 Copies  
Fee Lease - 3 Copies

District III  
1000 Rio Brazos Rd., Aztec, NM 87410

District IV  
PO Box 2088, Santa Fe, NM 87504-2088

RECEIVED  
070 FEBRUARY 21 1994  
5 PM 1:41  
 AMENDED REPORT

WELL LOCATION AND ACREAGE DEDICATION PLAN

<sup>1</sup> API Number 30-039- <i>26062</i>	<sup>2</sup> Pool Code 72319	<sup>3</sup> Pool Name Blanco Mesaverde
<sup>4</sup> Property Code 7465	<sup>5</sup> Property Name SAN JUAN 29-7 UNIT	
<sup>7</sup> GRID No. 14538	<sup>8</sup> Operator Name BURLINGTON RESOURCES OIL & GAS COMPANY	<sup>6</sup> Well Number 78B
		<sup>9</sup> Elevation 6310'

<sup>10</sup> Surface Location

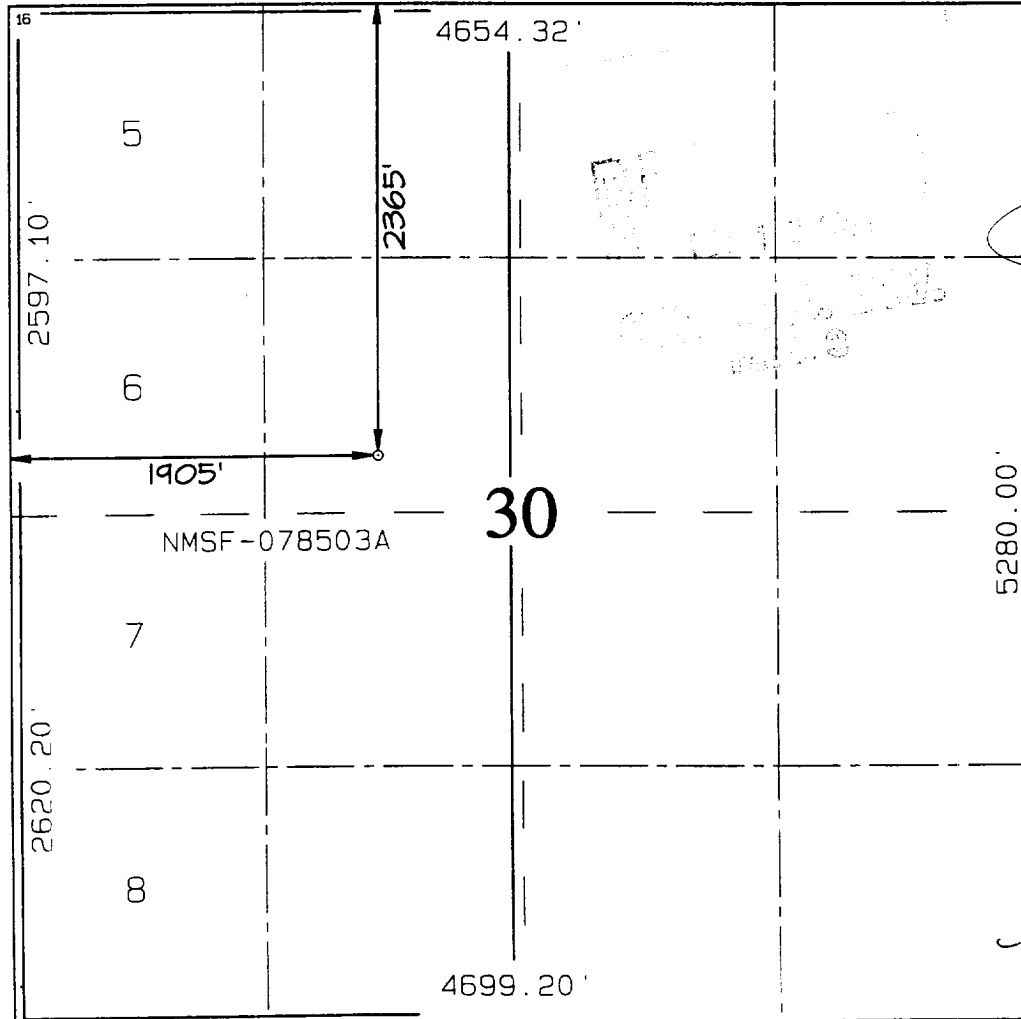
UL or lot no.	Section	Township	Range	Lot Idn	Feet from the	North/South line	Feet from the	East/West line	County
F	30	29N	7W		2365	NORTH	1905	WEST	RIO ARRIBA

<sup>11</sup> Bottom Hole Location If Different From Surface

UL or lot no.	Section	Township	Range	Lot Idn	Feet from the	North/South line	Feet from the	East/West line	County

<sup>12</sup> Dedicated Acres W/246.88	<sup>13</sup> Joint or Infill	<sup>14</sup> Consolidation Code	<sup>15</sup> Order No.
---	-------------------------------	----------------------------------	-------------------------

NO ALLOWABLE WILL BE ASSIGNED TO THIS COMPLETION UNTIL ALL INTERESTS HAVE BEEN CONSOLIDATED OR A NON-STANDARD UNIT HAS BEEN APPROVED BY THE DIVISION



<sup>17</sup> OPERATOR CERTIFICATION

I hereby certify that the information contained herein is true and complete to the best of my knowledge and belief

*Peggy Bradfield*  
Signature

Peggy Bradfield  
Printed Name

Regulatory Administrator  
Title

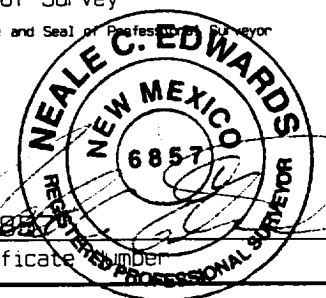
11-25-98  
Date

<sup>18</sup> SURVEYOR CERTIFICATION

I hereby certify that the well location shown on this plan was plotted from field notes of actual surveys made by me or under my supervision, and that the same is true and correct to the best of my belief.

SEPTEMBER 21, 1998  
Date of Survey

Signature and Seal of Professional Surveyor



Certificate Number

## OPERATIONS PLAN

**Well Name:** San Juan 29-7 Unit #78B  
**Surface Location:** 2365' FNL, 1905' FWL Section 30, T-29-N, R-7-W  
Rio Arriba County, New Mexico  
Latitude 36° 41.8, Longitude 107° 36.7

**Formation:** Blanco Mesa Verde  
**Elevation:** 6310' GL

<u>Formation Tops:</u>	<u>Top</u>	<u>Bottom</u>	<u>Contents</u>
Surface	San Jose	2010'	aquifer
Ojo Alamo	2010'	2162'	aquifer
Kirtland	2162'	2542'	gas
Fruitland	2542'	2976'	gas
Pictured Cliffs	2976'	3094'	gas
Lewis	3094'	3649'	gas
<b>Intermediate TD</b>	<b>3194'</b>		
Mesa Verde	3649'	3939'	gas
Chacra	3939'	4599'	gas
Massive Cliff House	4599'	4758'	gas
Menefee	4758'	5170'	gas
Point Lookout	5170'		gas
<b>Total Depth</b>	<b>5570'</b>		

**Logging Program:**

Cased hole logging - Gamma Ray, Cement bond from surface to TD  
Mud Logs/Coring/DST - none

**Mud Program:**

<u>Interval- MD</u>	<u>Type</u>	<u>Weight</u>	<u>Vis.</u>	<u>Fluid Loss</u>
0- 200'	Spud	8.4-9.0	40-50	no control
200- 3194'	LSND	8.4-9.0	30-60	no control
3194- 5570'	Air/Mist	n/a	n/a	n/a

Pit levels will be visually monitored to detect gain or loss of fluid control.

**Casing Program (as listed, the equivalent, or better):**

<u>Hole Size</u>	<u>Measured Depth</u>	<u>Csg Size</u>	<u>Weight</u>	<u>Grade</u>
12 1/4"	0' - 200'	9 5/8"	32.3#	H-40
8 3/4"	0' - 3194'	7"	20.0#	J-55
6 1/4"	3094' - 5570'	4 1/2"	10.5#	J-55

**Tubing Program:** 0' - 5570' 2 3/8" 4.7# J-55

**BOP Specifications, Wellhead and Tests:**

**Surface to Intermediate TD -**

11" 2000 psi minimum double gate BOP stack (Reference Figure #1).  
After nipple-up prior to drilling out surface casing, rams and casing will be tested to 600 psi for 30 minutes.

