

UNITED STATES
DEPARTMENT OF THE INTERIOR
BUREAU OF LAND MANAGEMENT

APPLICATION FOR PERMIT TO DRILL, DEEPEN, OR PLUG BACK

1a. Type of Work
DRILL
OFC FARMINGTON, NM

1b. Type of Well
GAS

2. Operator
BURLINGTON
RESOURCES Oil & Gas Company

3. Address & Phone No. of Operator
PO Box 4289, Farmington, NM 87499
(505) 326-9700

4. Location of Well
685' FNL, 205' FEL,
Latitude 36° 45.6, Longitude 107° 36.2
R-10927A

5. Lease Number
SF-078943
Unit Reporting Number

6. If Indian, All. or Tribe

7. Unit Agreement Name
San Juan 29-7 Unit

8. Farm or Lease Name
San Juan 29-7 Unit

9. Well Number
46B

10. Field, Pool, Wildcat
Blanco Mesaverde

11. Sec., Twn, Rge, Mer. (NMPM)
Sec. 6, T-29-N, R-7-W
API # 30-0 39-26142

12. County
Rio Arriba

13. State
NM

14. Distance in Miles from Nearest Town
1 mile from Navajo City

15. Distance from Proposed Location to Nearest Property or Lease Line
205'

16. Acres in Lease

17. Acres Assigned to Well
314.93 E/2

18. Distance from Proposed Location to Nearest Well, Drig, Compl, or Applied for on this Lease
2000'

19. Proposed Depth
5447'

20. Rotary or Cable Tools
Rotary

21. Elevations (DF, FT, GR, Etc.)
6033' GR

22. Approx. Date Work will Start

23. Proposed Casing and Cementing Program
See Operations Plan attached

24. Authorized by: Deputy State Admin
Regulatory/Compliance Administrator

3-9-99
Date

PERMIT NO. _____

APPROVAL DATE

APR 19 1999

APPROVED BY /S/ Duane W. Spencer

TITLE

Team Lead, Petroleum Management

DATE

Archaeological Report to be submitted

Threatened and Endangered Species Report to be submitted

NOTE: This format is issued in lieu of U.S. BLM Form 3160-3

Title 18 U.S.C. Section 1001, makes it a crime for any person knowingly and willfully to make to any department or agency of the United States any false, fictitious or fraudulent statements or presentations as to any matter within its jurisdiction.

NMOCD

District I
PO Box 1980, Hobbs, NM 88241-1980

District II
PO Drawer 00, Artesia, NM 88211-0719

District III
1000 Rio Brazos Rd., Aztec, NM 87410

District IV
PO Box 2088, Santa Fe, NM 87504-2088

State of New Mexico
Energy, Minerals & Natural Resources Department

OIL CONSERVATION DIVISION
PO Box 2088
Santa Fe, NM 87504-2088

Form C-10
Revised February 21, 1995
Instructions on back
Submit to Appropriate District Office
State Lease - 4 Copies
Fee Lease - 3 Copies

☐ AMENDED REPORT

99 MAR 17 PM 1:17

WELL LOCATION AND ACREAGE DEDICATION PLAT

API Number 30-039-26145	Pool Code 72319	Pool Name Blanco Mesaverde
Property Code 7465	Property Name SAN JUAN 29-7 UNIT	Well Number 468
GRID No. 14538	Operator Name BURLINGTON RESOURCES OIL & GAS COMPANY	Elevation 6033'

10 Surface Location

UL or lot no.	Section	Township	Range	Lot Idn	Feet from the	North/South line	Feet from the	East/West line	County
A	6	29N	7W		685	NORTH	205	EAST	RIO ARriba

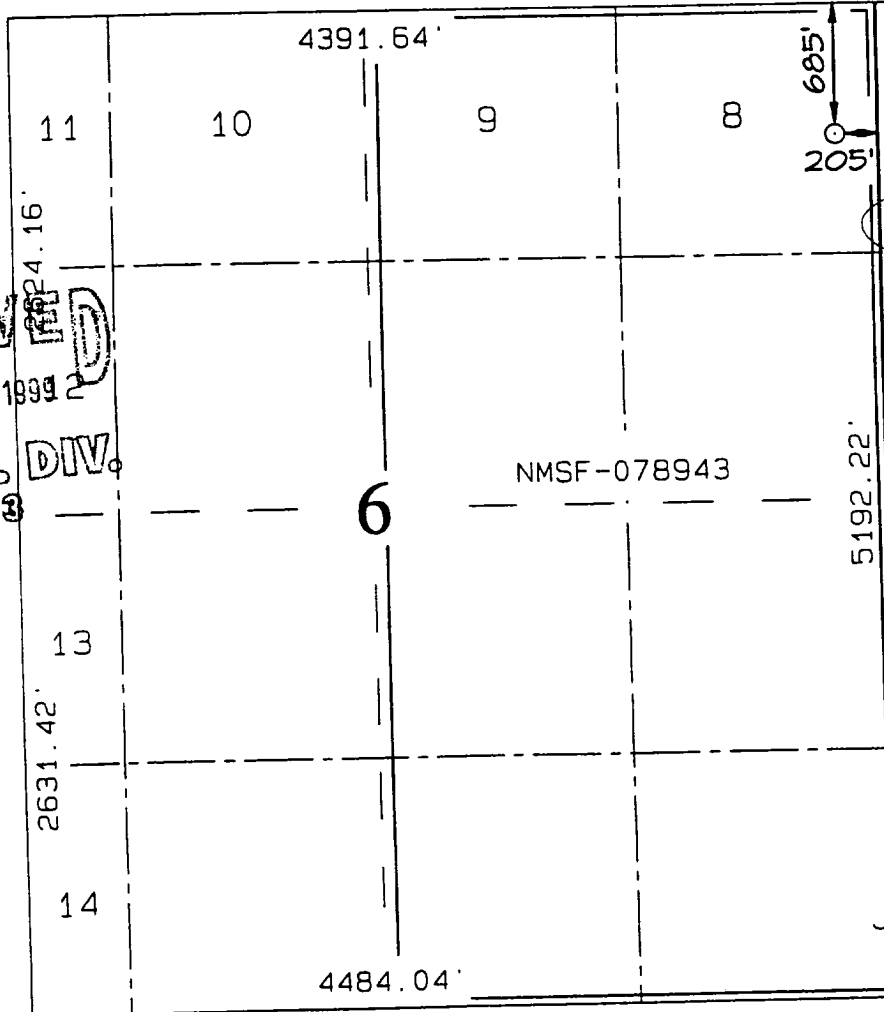
11 Bottom Hole Location If Different From Surface

UL or lot no.	Section	Township	Range	Lot Idn	Feet from the	North/South line	Feet from the	East/West line	County

12 Dedicated Acres E/314.93	13 Joint or Infill	14 Consolidation Code	15 Order No.
--------------------------------	--------------------	-----------------------	--------------

NO ALLOWABLE WILL BE ASSIGNED TO THIS COMPLETION UNTIL ALL INTERESTS HAVE BEEN CONSOLIDATED OR A NON-STANDARD UNIT HAS BEEN APPROVED BY THE DIVISION

16



17 OPERATOR CERTIFICATION

I hereby certify that the information contained herein is true and complete to the best of my knowledge and belief.

Signature

Peggy Bradfield

Printed Name

Regulatory Administrator

Title

3-9-99

Date

18 SURVEYOR CERTIFICATION

I hereby certify that the well location shown on this was plotted from field notes of actual surveys made by or under my supervision and that the same is true and correct to the best of my belief.

JANUARY 27, 1999

Date of Survey

Signature and Seal of Professional Surveyor

NEALE C. EDWARDS
NEW MEXICO
6857
Certificated Number 6857

RECEIVED
APR 22 1999
OIL CON. DIV.
DIST. 3

OPERATIONS PLAN

Well Name: San Juan 29-7 Unit #46B
Surface Location: 685' FNL, 205' FEL, Section 6, T-29-N, R-7-W
Rio Arriba County, New Mexico
Latitude 36° 45.6, Longitude 107° 36.2

Formation: Blanco Mesa Verde
Elevation: 6033' GL

<u>Formation Tops:</u>	<u>Top</u>	<u>Bottom</u>	<u>Contents</u>
Surface	San Jose	1865'	aquifer
Ojo Alamo	1865'	1980'	aquifer
Kirtland	1980'	2396'	gas
Intermediate TD	2080'		
Fruitland	2396'	2855'	gas
Pictured Cliffs	2855'	3029'	gas
Lewis	3029'	3605'	gas
Mesa Verde	3605'	3855'	gas
Chacra	3855'	4589'	gas
Massive Cliff House	4589'	4691'	gas
Menefee	4691'	5047'	gas
Point Lookout	5047'		gas
Total Depth	5447'		

Logging Program:

Cased hole logging - Gamma Ray, Cement bond from surface to TD
Mud Logs/Coring/DST - none

Mud Program:

<u>Interval- MD</u>	<u>Type</u>	<u>Weight</u>	<u>Vis.</u>	<u>Fluid Loss</u>
0- 200'	Spud	8.4-9.0	40-50	no control
200- 2080'	LSND	8.4-9.0	30-60	no control
2080- 5447'	Air/Mist	n/a	n/a	n/a

Pit levels will be visually monitored to detect gain or loss of fluid control.

Casing Program (as listed, the equivalent, or better):

<u>Hole Size</u>	<u>Measured Depth</u>	<u>Csg Size</u>	<u>Weight</u>	<u>Grade</u>
12 1/4"	0' - 200'	9 5/8"	32.3#	H-40
8 3/4"	0' - 2080'	7"	20.0#	J-55
6 1/4"	1980' - 5447'	4 1/2"	10.5#	J-55

Tubing Program: 0' - 5447' 2 3/8" 4.7# J-55

BOP Specifications, Wellhead and Tests:

Surface to Intermediate TD -

11" 2000 psi minimum double gate BOP stack (Reference Figure #1).
After nipple-up prior to drilling out surface casing, rams and casing will be tested to 600 psi for 30 minutes.

[illegible]