

UNITED STATES
DEPARTMENT OF THE INTERIOR
BUREAU OF LAND MANAGEMENT

APPLICATION FOR PERMIT TO DRILL, DEEPEN, OR PLUG BACK

1a. Type of Work DRILL	5. Lease Number SF-078951 Unit Reporting Number
1b. Type of Well GAS	6. If Indian, All. or Tribe
2. Operator BURLINGTON RESOURCES Oil & Gas Company.	7. Unit Agreement Name San Juan 29-7 Unit
3. Address & Phone No. of Operator PO Box 4289, Farmington, NM 87499 (505) 326-9700	8. Farm or Lease Name San Juan 29-7 Unit 9. Well Number 168
4. Location of Well 1575' FSL, 1890' FWL Latitude 36° 45.1, Longitude 107° 35.8	10. Field, Pool, Wildcat Blanco Pictured Cliffs 11. Sec., Twn, Rge, Mer. (NMPM) K Sec. 5, T-29-N, R-7-W API # 30-039-26652
14. Distance in Miles from Nearest Town 15 miles from Blanco	12. County Rio Arriba 13. State NM
15. Distance from Proposed Location to Nearest Property or Lease Line 1575'	17. Acres Assigned to Well 187.55
16. Acres in Lease	
18. Distance from Proposed Location to Nearest Well, Drig, Compl, or Applied for on this Lease 75'	
19. Proposed Depth 3240' -	20. Rotary or Cable Tools Rotary
21. Elevations (DF, FT, GR, Etc.) 6102' GR	22. Approx. Date Work will Start
23. Proposed Casing and Cementing Program See Operations Plan attached	
24. Authorized by: <u>Deputy Case</u> Regulatory/Compliance Supervisor	Date 11-30-00

PERMIT NO. 1st Joel Farrell APPROVAL DATE 4/25/01
APPROVED BY _____ TITLE _____ DATE APR 25

Archaeological Report to be submitted

Threatened and Endangered Species Report to be submitted

NOTE: This format is issued in lieu of U.S. BLM Form 3160-3

Title 18 U.S.C. Section 1001, makes it a crime for any person knowingly and willfully to make to any department or agency of the United States any false, fictitious or fraudulent statements or presentations as to any matter within its jurisdiction.

AMCO

submitted in lieu of Form 3160-5

UNITED STATES
DEPARTMENT OF THE INTERIOR
BUREAU OF LAND MANAGEMENT

Sundry Notices and Reports on Wells

1. Type of Well
GAS

2. Name of Operator

**BURLINGTON
RESOURCES**

OIL & GAS COMPANY

3. Address & Phone No. of Operator

PO Box 4289, Farmington, NM 87499 (505) 326-9700

4. Location of Well, Footage, Sec., T, R, M

1575' FSL, 1890' FWL, Sec.5, T-29-N, R-7-W, NMPM

5. Lease Number
SF-078951

6. If Indian, All. or
Tribe Name

7. Unit Agreement Name

San Juan 29-7 Urit

8. Well Name & Number

San Juan 29-7 U #168

9. API Well No.

30-039- 26652

10. Field and Pool

Blanco Pict. Cliffs

11. County and State

Rio Arriba Co, NM

12. CHECK APPROPRIATE BOX TO INDICATE NATURE OF NOTICE, REPORT, OTHER DATA

Type of Submission

☒ Notice of Intent

☐ Subsequent Report

☐ Final Abandonment

Type of Action

☐ Abandonment

☐ Recompletion

☐ Plugging Back

☐ Casing Repair

☐ Altering Casing

☒ Other -

☐ Change of Plans

☐ New Construction

☐ Non-Routine Fracturing

☐ Water Shut off

☐ Conversion to Injection

13. Describe Proposed or Completed Operations

Attached is a new C-102 plat to show the correct acreage dedication for the subject well.

14. I hereby certify that the foregoing is true and correct.

Signed Reggie Cole Title Regulatory Supervisor Date 2/8/01
no

(This space for Federal or State Office use)

APPROVED BY _____ Title _____ Date _____

CONDITION OF APPROVAL, if any:

Title 18 U.S.C. Section 1001, makes it a crime for any person knowingly and willfully to make any department or agency of the United States any false, fictitious or fraudulent statements or representations as to any matter within its jurisdiction.

NMOCD

District I
PO Box 1980, Hobbs, NM 88241-1980

District II
PO Drawer DD, Artesia, NM 88211-0719

District III
1000 Rio Brazos Rd., Aztec, NM 37410

District IV
PO Box 2088, Santa Fe, NM 87504-2088

State of New Mexico
Energy, Minerals & Natural Resources Department

OIL CONSERVATION DIVISION
PO Box 2088
Santa Fe, NM 87504-2088

Form C-102
Revised February 21, 1994
Instructions on back
Submit to Appropriate District Office
State Lease - 4 Copies
Fee Lease - 3 Copies

☐ AMENDED REPORT

WELL LOCATION AND ACREAGE DEDICATION PLAT

1 API Number 30-039- <u>26652</u>		2 Pool Code 72359		3 Pool Name Blanco Pictured Cliffs		
4 Property Code 7465		5 Property Name SAN JUAN 29-7 UNIT			6 Well Number 168	
7 GRID No. 14538		8 Operator Name BURLINGTON RESOURCES OIL & GAS COMPANY			9 Elevation 6102 -	

10 Surface Location

UL or lot no.	Section	Township	Range	Lot Idn	Feet from the	North/South line	Feet from the	East/West line	County
K	5	29N	7W		1575	SOUTH	1890	WEST	FIO ARriba

11 Bottom Hole Location If Different From Surface

UL or lot no.	Section	Township	Range	Lot Idn	Feet from the	North/South line	Feet from the	East/West line	County

12 Dedicated Acres 160 <u>SW/4</u>	13 Joint or Infill	14 Consolidation Code	15 Order No. 160 acres for density purposes for the Pictured Cliffs 315.10 acres for revenue purposes for the Pictured Cliffs
---------------------------------------	--------------------	-----------------------	-------------------------------------------------------------------------------------------------------------------------------------

NO ALLOWABLE WILL BE ASSIGNED TO THIS COMPLETION UNTIL ALL INTERESTS HAVE BEEN CONSOLIDATED
OR A NON-STANDARD UNIT HAS BEEN APPROVED BY THE DIVISION

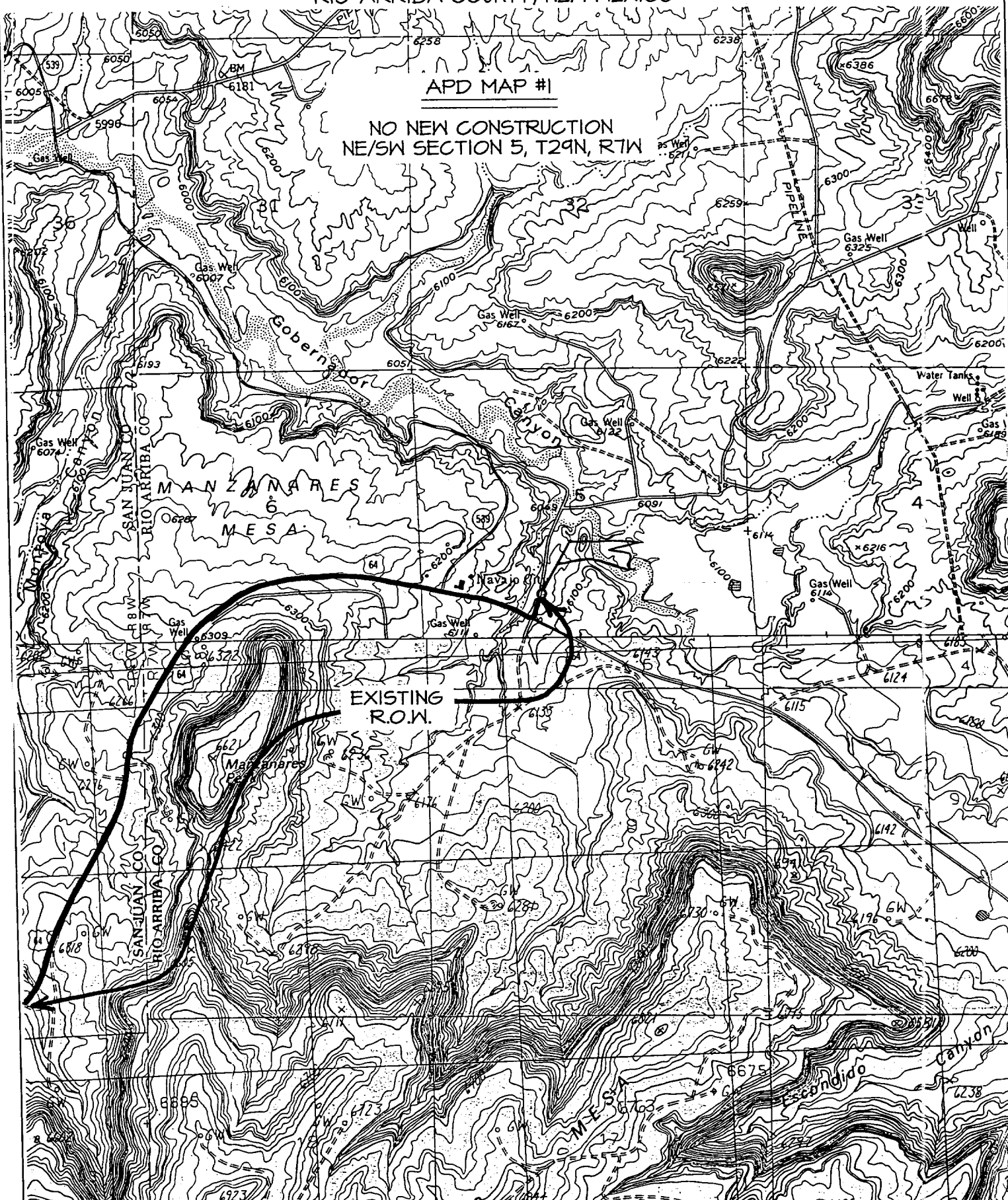
<div>16</div> <div>LOT 8 LOT 7 LOT 6 LOT 5</div> <div>1232.22' 1320.00' 2640.00' 5280.00' 5281.32' 1890' 1575'</div> <div>USA SF-078951</div> <div>LAT: 36°45.1'N LONG: 107°35.8'W</div> <div>Reissued to show correct acreage dedication</div> <div>APR 2001 RECEIVED OIL CONSERVATION DIVISION</div>				<div>17 OPERATOR CERTIFICATION</div> <div>I hereby certify that the information contained herein is true and complete to the best of my knowledge and belief</div> <div><u>Peggy Cole</u> Signature Peggy Cole Printed Name Regulatory Supervisor Title 2-8-01 Date</div>	
				<div>18 SURVEYOR CERTIFICATION</div> <div>I hereby certify that the well location shown on this plat was plotted from field notes of actual surveys made by me or under my supervision, and that the same is true and correct to the best of my belief.</div> <div>OCTOBER 29, 2000 Date of Survey Signature and Seal of Professional Surveyor <u>NEALE C. EDWARDS</u> NEW MEXICO 6857 Certificate No. 6857</div>	

BURLINGTON RESOURCES OIL & GAS COMPANY SAN JUAN 29-7 UNIT #168

1575' FSL & 1890' FWL, SECTION 5, T29N, R7W, N.M.P.M.
RIO ARriba COUNTY, NEW MEXICO

APD MAP #1

NO NEW CONSTRUCTION
NE/SW SECTION 5, T29N, R7W



OPERATIONS PLAN

Well Name: San Juan 29-7 Unit #168
Location: 1575' FSL, 1890' FWL, Section 5, T-29-N, R-7-W
Rio Arriba County, New Mexico
Latitude 36° 45.1, Longitude 107° 35.8
Formation: Blanco Pictured Cliffs
Elevation: 6102' GL

Formation:	Top	Bottom	Contents
Surface	San Jose	1919'	
Ojo Alamo	1919'	2049'	aquifer
Kirtland	2049'	2659'	gas
Fruitland	2659'	2904'	gas
Pictured Cliffs	2904'		gas
Total Depth	3240'		

Logging Program:

Cased hole - Surface to TD - CBL-CCL-GR
Open hole - CNL-LDT TD to 2045', AIT - Surface to TD

Coring Program: None

Mud Program:

Interval	Type	Weight	Vis.	Fluid Loss
0-200'	Spud	8.4-9.0	40-50	no control
200-3240'	FW	8.4-9.0	32-45	no control

Casing Program (as listed, equivalent, or better):

Hole Size	Depth Interval	Csg. Size	Wt.	Grade
8 3/4"	0 - 200'	7"	20.0#	J-55
6 1/4"	0 - 3240'	2 7/8"	6.5#	J-55

Float Equipment: 7" surface casing - saw tooth guide shoe.
Centralizers will be run in accordance with Onshore Order #2.

2 7/8" production casing - float shoe on bottom. Three centralizers run every other joint above shoe. Seven centralizers run every 3rd joint to the base of the Ojo Alamo @ 2049'. Two turbolizing type centralizers - one below and one into the base of the Ojo Alamo @ 2049'. Standard centralizers thereafter every fourth joint up to the base of the surface pipe.

Wellhead Equipment: 7" x 2 7/8" 2000 psi screw on independent wellhead.

Cementing:

7" surface casing - cement with 76 sx Class "H" cement with 1/4# flocele/sx and 3% calcium chloride (90 cu.ft. of slurry, 200% excess to circulate to surface). WOC 8 hrs. Test casing to 600 psi for 30 minutes.

2 7/8" production casing - Lead w/333 sx Class "H" w/2% Econolite, 1/2 pps Flocele, 10 pps Gilsonite and 10 pps blended silicate. Tail w/90 sx 50/50 Class "H" Poz w/2% gel, 1/4 pps Flocele, 5 pps gilsonite and 2% calcium chloride (1089 cu.ft. of slurry, 100% excess to circulate to surface). WOC 8 hrs. If cement does not circulate to surface, a CBL will be run during completion to determine TOC.

Note: If open hole logs are run, cement volumes will be based on 25% excess over caliper volumes.

San Juan 29-7 Unit #168

BOP and tests:

Surface to TD - 11" 2000 psi (minimum double gate BOP stack (Reference Figure #1 and #2). Prior to drilling out surface casing, test rams to 600 psi/30 min.

Completion - 6" 2000 psi (minimum) double gate BOP stack (Reference Figure #2). Prior to completion operations, test rams and casing to 2000 psi/15 min.

From surface to TD - choke manifold (Reference Figure #3).

Pipe rams will be actuated to least once each day and blind rams actuated once each trip to test proper functioning. An upper kelly cock valve with handle and drill string safety valves to fit each drill string will be maintained and available on the rig floor.

Additional information:

- * The Pictured Cliffs formation will be completed.
- * Anticipated pore pressure for the Pictured Cliffs is 500 psi.
- * This gas is dedicated.
- * The west half of section 5 is dedicated to the Pictured Cliffs.



Drilling Engineer

12/5/00

Date