

UNITED STATES  
DEPARTMENT OF THE INTERIOR  
BUREAU OF LAND MANAGEMENT

APPLICATION FOR PERMIT TO DRILL, DEEPEN, OR PLUG BACK

1a. Type of Work  
DRILL

1b. Type of Well  
GAS

2. Operator  
**BURLINGTON RESOURCES** Oil & Gas Company

3. Address & Phone No. of Operator  
PO Box 4289, Farmington, NM 87499  
(505) 326-9700

4. Location of Well  
1720' FSL, 1475' FEL,  
Latitude 36° 45.1, Longitude 107° 36.0

5. Lease Number  
SF-078943  
Unit Reporting Number

6. If Indian, All. or Tribe

7. Unit Agreement Name  
San Juan 29-7 Unit

8. Farm or Lease Name  
San Juan 29-7 Unit

9. Well Number  
170

10. Field, Pool, Wildcat  
Blanco Pictured Cliffs

11. Sec. Twn, Rge, Mer. (NMPM)  
Sec. 6, T-29-N, R-7-W  
API # 30-039-26745

12. County  
Rio Arriba

13. State  
NM

14. Distance in Miles from Nearest Town  
14 miles from Blanco

15. Distance from Proposed Location to Nearest Property or Lease Line  
1475'

16. Acres in Lease

17. Acres Assigned to Well  
160 SE/4

18. Distance from Proposed Location to Nearest Well, Drig, Compl, or Applied for on this Lease  
15'

19. Proposed Depth  
3360' —

20. Rotary or Cable Tools  
Rotary

21. Elevations (DF, FT, GR, Etc.)  
6258' GR —

22. Approx. Date Work will Start

23. Proposed Casing and Cementing Program  
See Operations Plan attached

24. Authorized by: [Signature]  
Regulatory/Compliance Supervisor

Date 5-1-01

PERMIT NO. \_\_\_\_\_

APPROVAL DATE 5/1/01

APPROVED BY /s/ Lee Ottani

TITLE \_\_\_\_\_

DATE \_\_\_\_\_

Archaeological Report submitted – 00-DCA-149 dated 11-30-00  
Threatened and Endangered Species Report submitted

NOTE: This format is issued in lieu of U.S. BLM Form 3160-3

Title 18 U.S.C. Section 1001, makes it a crime for any person knowingly and willfully to make to any department or agency of the United States any false, fictitious or fraudulent statements or presentations as to any matter within its jurisdiction.

NMOCD

District I  
PO Box 1980, Hobbs, NM 88241-1980

District II  
PO Drawer 00, Artesia, NM 88211-0719

District III  
1000 Rio Brazos Rd., Aztec, NM 87410

District IV  
PO Box 2088, Santa Fe, NM 87504-2088

State of New Mexico  
Energy, Minerals & Natural Resources Department

OIL CONSERVATION DIVISION  
PO Box 2088  
Santa Fe, NM 87504-2088

Form C-102  
Revised February 21, 1994  
Instructions on back  
Submit to Appropriate District Office  
State Lease - 4 Copies  
Fee Lease - 3 Copies

☐ AMENDED REPORT

### WELL LOCATION AND ACREAGE DEDICATION PLAT

*API Number 30-039- <u>26745</u>		*Pool Code 72359	*Pool Name Blanco Pictured Cliffs
*Property Code 7465	*Property Name SAN JUAN 29-7 UNIT		*Well Number 170
*GRID No. 14538	*Operator Name BURLINGTON RESOURCES OIL & GAS COMPANY		*Elevation 6258'

#### 10 Surface Location

UL or lot no.	Section	Township	Range	Lot Ion	Feet from the	North/South line	Feet from the	East/West line	County
J	6	29N	7W		1720	SOUTH	1475	EAST	RIO ARriba

#### 11 Bottom Hole Location If Different From Surface

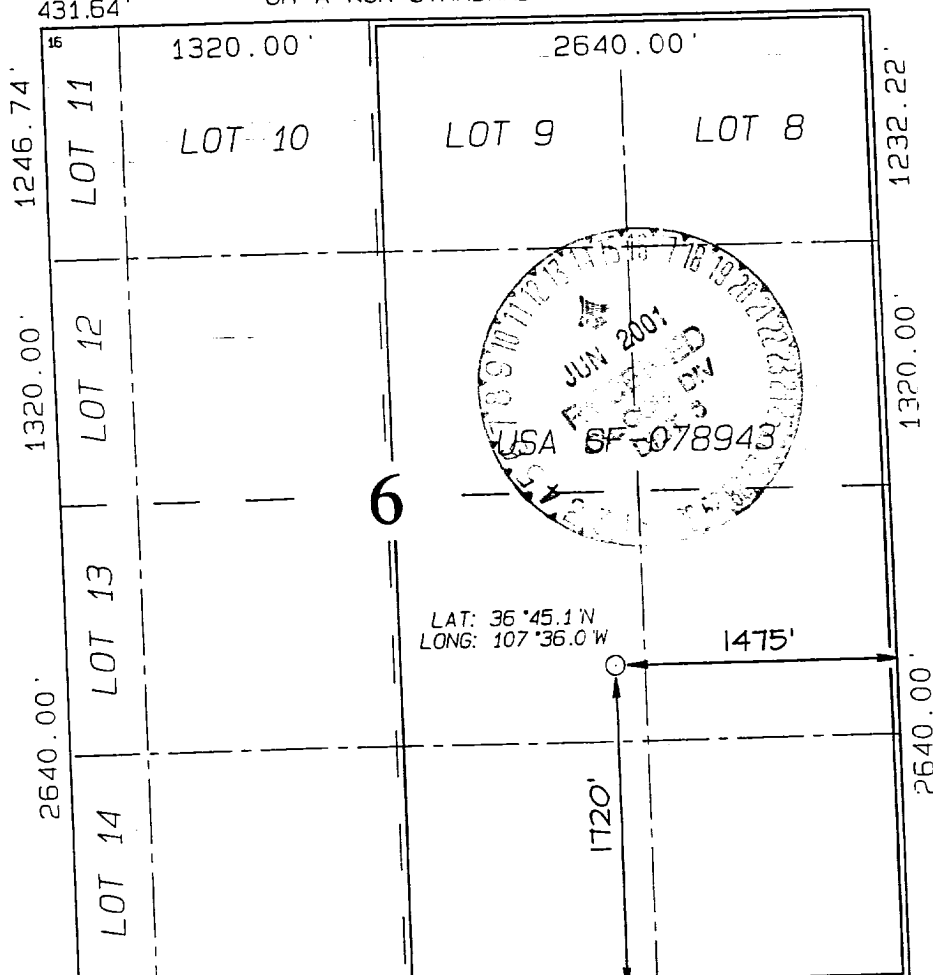
UL or lot no.	Section	Township	Range	Lot Ion	Feet from the	North/South line	Feet from the	East/West line	County

12 Dedicated Acres 160	13 Joint or Infill	14 Consolidation Code	15 Order No. 160 acres for density purposes for the Pictured Cliffs 320 acres for revenue purposes for the Pictured Cliffs
---------------------------	--------------------	-----------------------	--

NO ALLOWABLE WILL BE ASSIGNED TO THIS COMPLETION UNTIL ALL INTERESTS HAVE BEEN CONSOLIDATED  
OR A NON-STANDARD UNIT HAS BEEN APPROVED BY THE DIVISION

431.64'



#### 17 OPERATOR CERTIFICATION

I hereby certify that the information contained herein is true and complete to the best of my knowledge and belief

*Peggy Cole*  
Signature  
Peggy Cole  
Printed Name  
Regulatory Supervisor  
Title  
5-1-01  
Date

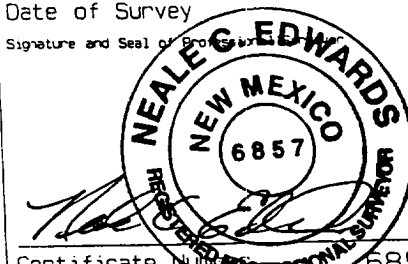
#### 18 SURVEYOR CERTIFICATION

I hereby certify that the well location shown on this plat was plotted from field notes of actual surveys made by me or under my supervision and that the same is true and correct to the best of my belief.

NOVEMBER 16, 2000

Date of Survey

Signature and Seal of



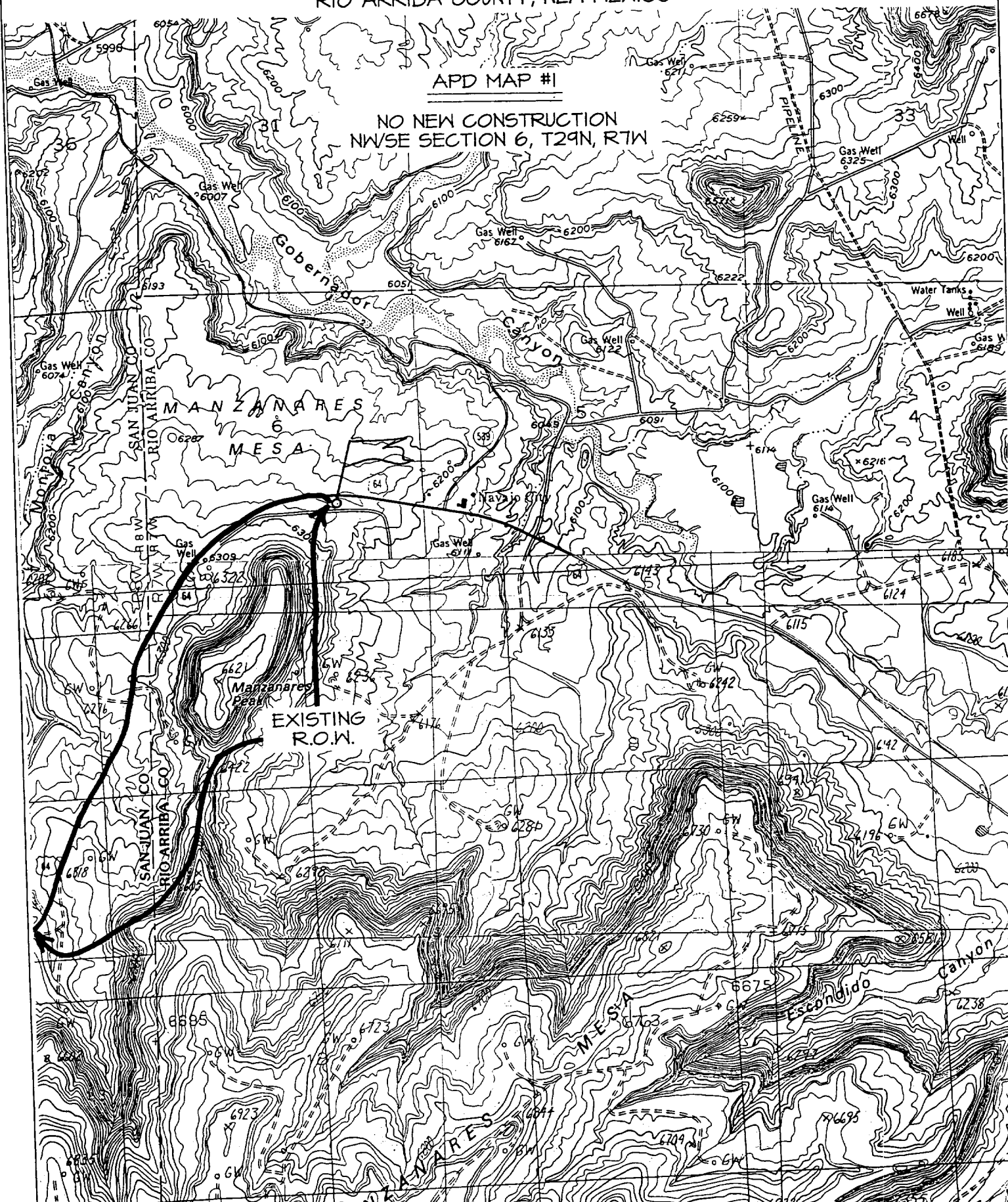
Certificate Number 6857

BURLINGTON RESOURCES OIL & GAS COMPANY SAN JUAN 29-7 UNIT #170

1720' FSL & 1475' FEL, SECTION 6, T29N, R7W, N.M.P.M.  
RIO ARriba COUNTY, NEW MEXICO

APD MAP #1

NO NEW CONSTRUCTION  
NW/SE SECTION 6, T29N, R7W



## OPERATIONS PLAN

**Well Name:** San Juan 29-7 Unit #170  
**Location:** 1720' FSL, 1475' FEL, Section 6, T-29-N, R-7-W  
Rio Arriba County, New Mexico  
Latitude 36° 45.1, Longitude 107° 36.0  
**Formation:** Blanco Pictured Cliffs  
**Elevation:** 6258' GL

Formation:	Top	Bottom	Contents
Surface	San Jose	2001'	
Ojo Alamo	2001'	2185'	aquifer
Kirtland	2185'	2816'	gas
Fruitland	2816'	3065'	gas
Pictured Cliffs	3065'		gas
Total Depth	3360'		

### **Logging Program:**

Cased hole - Surface to TD - CBL-CCL-GR  
Open hole - CNL-LDT TD to 2180', AIT - Surface to TD

**Coring Program:** None

### **Mud Program:**

Interval	Type	Weight	Vis.	Fluid Loss
0- 120'	Spud	8.4-9.0	40-50	no control
120-3360'	FW	8.4-9.0	32-45	no control

### **Casing Program (as listed, equivalent, or better):**

Hole Size	Depth Interval	Csg. Size	Wt.	Grade
8 3/4"	0 - 120'	7"	20.0#	J-55
6 1/4"	0 - 3360'	2 7/8"	6.5#	J-55

**Float Equipment:** 7" surface casing - saw tooth guide shoe.  
Centralizers will be run in accordance with Onshore Order #2.

2 7/8" production casing - float shoe on bottom. Three centralizers run every other joint above shoe. Seven centralizers run every 3rd joint to the base of the Ojo Alamo @ 2185'. Two turbolizing type centralizers - one below and one into the base of the Ojo Alamo @ 2185'. Standard centralizers thereafter every fourth joint up to the base of the surface pipe.

**Wellhead Equipment:** 7" x 2 7/8" 2000 psi screw on independent wellhead.

### **Cementing:**

7" surface casing - cement with 46 sx Class "B" cement with 0.25 pps flocele and 3% calcium chloride (54 cu.ft. of slurry, 200% excess to circulate to surface). WOC 8 hrs. Test casing to 600 psi/30 minutes.

2 7/8" production casing - lead w/471 sacks Premium Lite cement with 3% calcium chloride, 0.25 pps Flocele, 5 pps LCM-1, 0.4% FL-52 and 0.4% SMS. Tail with 90 sacks Type III cement with 1% calcium chloride, 0.25 pps Flocele, 0.2% FL-52 (1129 cu.ft. of slurry, 100% excess to circulate to surface).

Note: If open hole logs are run, cement volumes will be based on 25% excess over caliper volumes.

**BOP and tests:**

Surface to TD - 11" 2000 psi (minimum double gate BOP stack (Reference Figure #1). Prior to drilling out surface casing, test rams to 600 psi/30 min.

Completion - 7 1/16" 2000 psi (minimum) double gate BOP stack (Reference Figure #2). Prior to completion operations, test rams and casing to 2000 psi/15 min.

From surface to TD - choke manifold (Reference Figure #3).

Pipe rams will be actuated to least once each day and blind rams actuated once each trip to test proper functioning. An upper kelly cock valve with handle and drill string safety valves to fit each drill string will be maintained and available on the rig floor.

**BOP and tests (if a coiled tubing drilling rig is utilized):**

Surface to TD: 7 1/16" 2000 psi (minimum) Torus annular BOP stack (Reference Figure #1B). Prior to drilling out surface casing, test annular BOP to 600 psi/30 minutes.

Completion: 7 1/16" 2000 psi (minimum) double gate BOP stack (Reference Figure #2). Prior to completion operations, test blind rams and casing to 1500 psi/30 minutes; all pipe rams and casing to 1500 psi/30 minutes each.

From surface to TD: choke manifold (Reference Figure #3).

The annular BOP will be actuated to close on drill pipe (coiled tubing) at least once each day and to close on open hole once each trip to test proper functioning.

**Additional information:**

- \* The Pictured Cliffs formation will be completed.
- \* Anticipated pore pressure for the Pictured Cliffs is 500 psi.
- \* This gas is dedicated.
- \* The southeast quarter of section 6 is dedicated to the Pictured Cliffs.

E. J. Giles  
Drilling Engineer

5/1/01  
Date