

UNITED STATES  
DEPARTMENT OF THE INTERIOR  
BUREAU OF LAND MANAGEMENT

APPLICATION FOR PERMIT TO DRILL, DEEPEN, OR PLUG BACK

1a. Type of Work  
DRILL

5. Lease Number  
2001 MAY - 1 FH 2-05  
SF-078399  
Unit Reporting Number

1b. Type of Well  
GAS

6. If Indian, All. or Tribe

2. Operator  
**BURLINGTON RESOURCES** Oil & Gas Company

7. Unit Agreement Name  
San Juan 29-7 Unit

3. Address & Phone No. of Operator  
PO Box 4289, Farmington, NM 87499  
(505) 326-9700

8. Farm or Lease Name  
San Juan 29-7 Unit

9. Well Number  
172

4. Location of Well  
1860' FSL, 1160' FEL,  
Latitude 36° 44.3, Longitude 107° 34.3

10. Field, Pool, Wildcat  
Blanco Pictured Cliffs

11. Sec., Twn, Rge, Mer. (NMPM)  
I Sec. 9, T-29-N, R-7-W  
API # 30-039-26746

14. Distance in Miles from Nearest Town  
16 miles from Blanco

12. County  
Rio Arriba

13. State  
NM

15. Distance from Proposed Location to Nearest Property or Lease Line  
1160'

16. Acres in Lease

17. Acres Assigned to Well  
160

18. Distance from Proposed Location to Nearest Well, Drig, Compl, or Applied for on this Lease  
200'

19. Proposed Depth  
3300'

This action is subject to technical and procedural review pursuant to 43 CFR 3165.3 and appeal pursuant to 43 CFR 3165.4.

20. Rotary or Cable Tools  
Rotary

21. Elevations (DF, FT, GR, Etc.)  
6172' GR

22. Approx. Date Work will Start

23. Proposed Casing and Cementing Program  
See Operations Plan attached

24. Authorized by: Regulatory/Compliance Supervisor  
Date 5-1-01

PERMIT NO. \_\_\_\_\_ APPROVAL DATE \_\_\_\_\_  
APPROVED BY /s/ Joel Farrell TITLE \_\_\_\_\_ DATE AUG - 1 2001

Archaeological Report submitted - 00-DCA-150 dated 11-30-00

Threatened and Endangered Species Report submitted

NOTE: This format is issued in lieu of U.S. BLM Form 3160-3

Title 18 U.S.C. Section 1001, makes it a crime for any person knowingly and willfully to make to any department or agency of the United States any false, fictitious or fraudulent statements or presentations as to any matter within its jurisdiction.

NMOCD

District I  
PO Box 1980, Hobbs, NM 88241-1980

State of New Mexico  
Energy, Minerals & Natural Resources Department

Form C-102

Revised February 21, 1994

District II  
PO Drawer DD, Artesia, NM 88211-0719

Instructions on back  
Submit to Appropriate District Office  
State Lease - 4 Copies  
Fee Lease - 3 Copies

District III  
1000 Rio Brazos Rd., Aztec, NM 87410

OIL CONSERVATION DIVISION

PO Box 2088 2001 MAY -1 PM 2:05  
Santa Fe, NM 87504-2088

District IV  
PO Box 2088, Santa Fe, NM 87504-2088

☐ AMENDED REPORT

WELL LOCATION AND ACREAGE DEDICATION PLAT

*API Number 30-039- 26746		*Pool Code 72359	*Pool Name Blanco Pictured Cliffs
*Property Code 7465	*Property Name SAN JUAN 29-7 UNIT		*Well Number 172
*OGRID No. 14538	*Operator Name BURLINGTON RESOURCES OIL & GAS COMPANY		*Elevation 6172'

<sup>10</sup> Surface Location

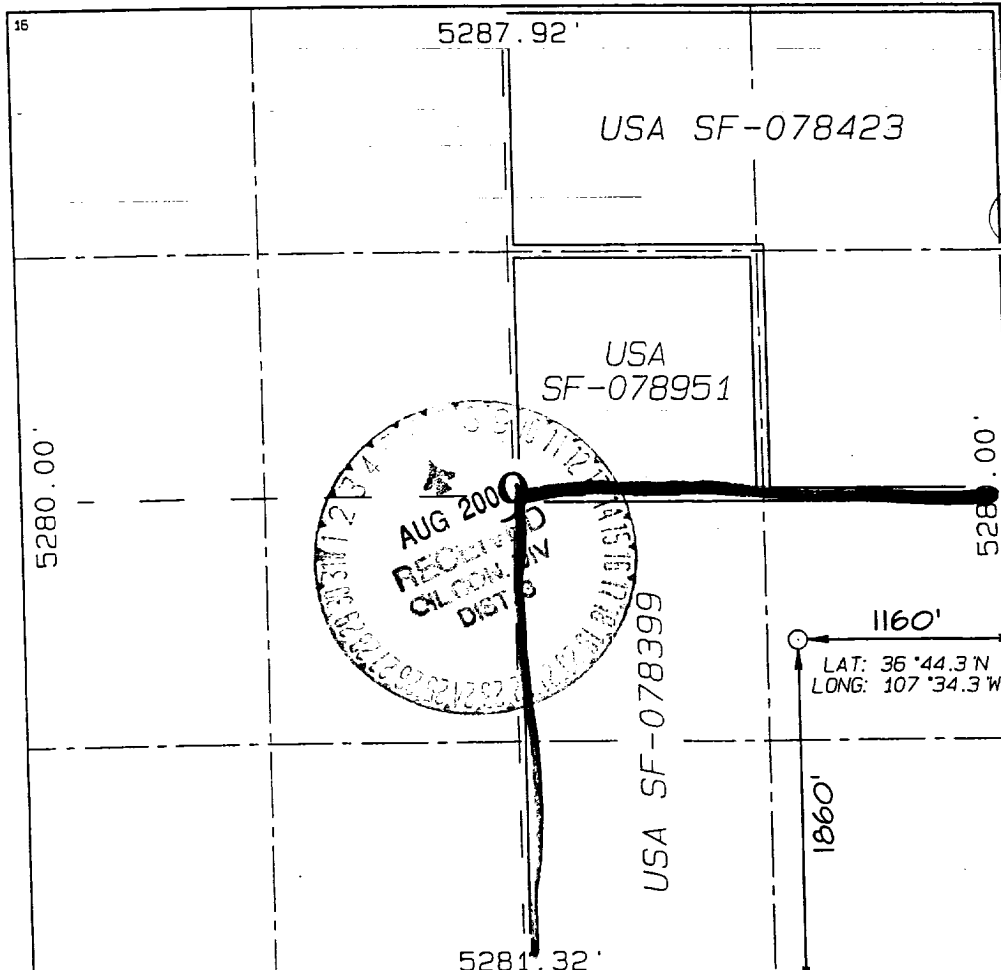
UL or lot no.	Section	Township	Range	Lot Idn	Feet from the	North/South line	Feet from the	East/West line	County
I	9	29N	7W		1860	SOUTH	1160	EAST	RIO ARriba

<sup>11</sup> Bottom Hole Location If Different From Surface

UL or lot no.	Section	Township	Range	Lot Idn	Feet from the	North/South line	Feet from the	East/West line	County

<sup>12</sup> Dedicated Acres 160	<sup>13</sup> Joint or Infill	<sup>14</sup> Consolidation Code	<sup>15</sup> Order No. 160 acres for density purposes for the Pictured Cliff 320 acres for revenue purposes for the Pictured Cliff
--------------------------------------	-------------------------------	----------------------------------	---

NO ALLOWABLE WILL BE ASSIGNED TO THIS COMPLETION UNTIL ALL INTERESTS HAVE BEEN CONSOLIDATED  
OR A NON-STANDARD UNIT HAS BEEN APPROVED BY THE DIVISION



<sup>17</sup> OPERATOR CERTIFICATION  
I hereby certify that the information contained herein is true and complete to the best of my knowledge and belief

*Peggy Cole*  
Signature  
Peggy Cole  
Printed Name  
Regulatory Supervisor  
Title  
4-27-01  
Date

<sup>18</sup> SURVEYOR CERTIFICATION  
I hereby certify that the well location shown on this plat was plotted from field notes of actual surveys made by or under my supervision, and that the same is true and correct to the best of my belief.

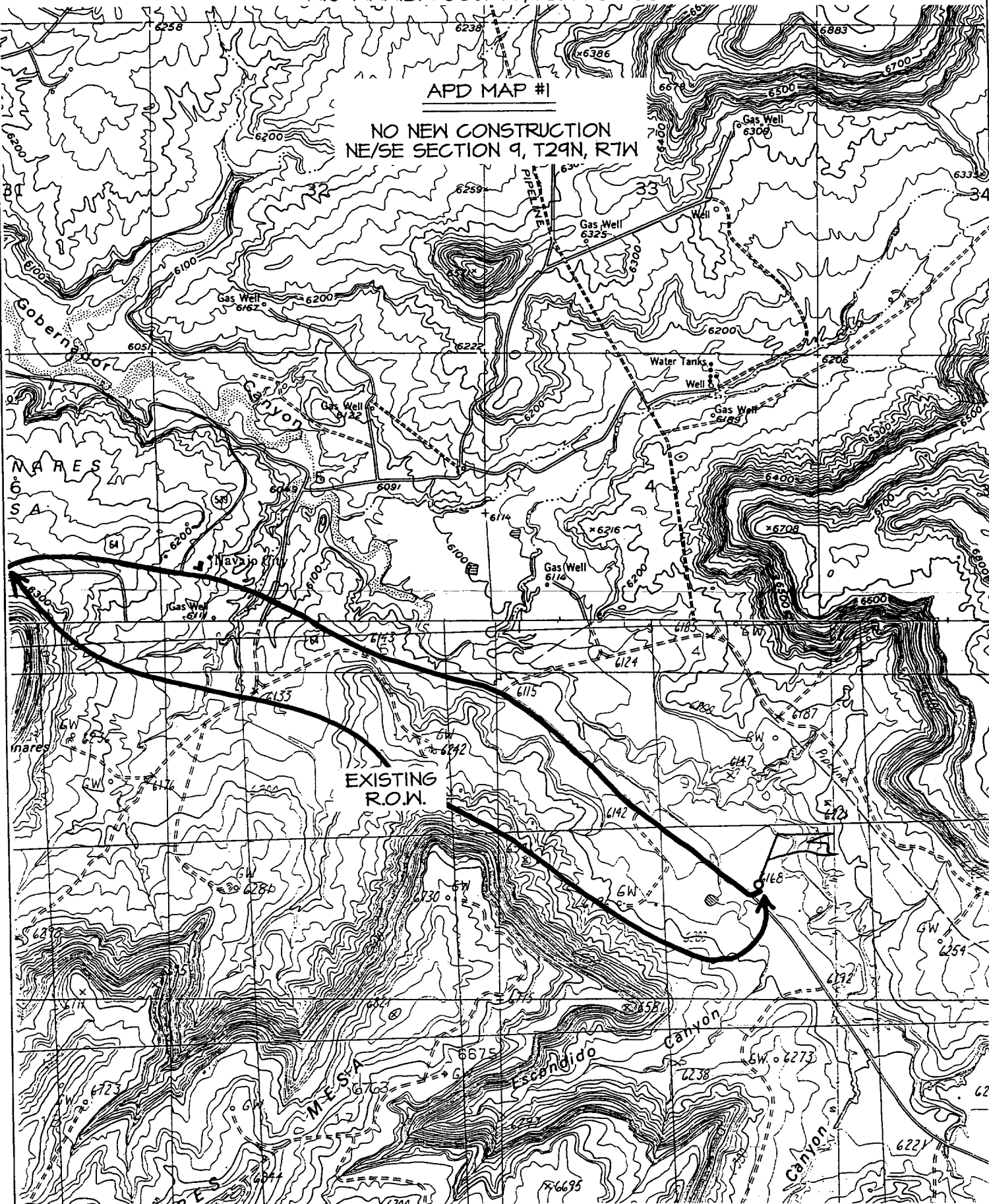
NOVEMBER 16, 2000  
Date of Survey  
Signature and Seal of Surveyor  
NEALE G. EDWARDS  
NEW MEXICO  
6857  
Certificate 685

BURLINGTON RESOURCES OIL & GAS COMPANY SAN JUAN 29-7 UNIT #172

1860' FSL & 1160' FEL, SECTION 9, T29N, R7W, N.M.P.M.  
RIO ARriba COUNTY, NEW MEXICO

APD MAP #1

NO NEW CONSTRUCTION  
NE/SE SECTION 9, T29N, R7W



## OPERATIONS PLAN

**Well Name:** San Juan 29-7 Unit #172  
**Location:** 1860' FSL, 1160' FEL, Section 9, T-29-N, R-7-W  
Rio Arriba County, New Mexico  
Latitude 36° 44.3, Longitude 107° 34.3  
**Formation:** Blanco Pictured Cliffs  
**Elevation:** 6172' GL

Formation:	Top	Bottom	Contents
Surface	San Jose	2023'	
Ojo Alamo	2023'	21995'	aquifer
Kirtland	2199'	2730'	gas
Fruitland	2730'	2994'	gas
Pictured Cliffs	2994'		gas
Total Depth	3300'		

### **Logging Program:**

Cased hole - Surface to TD - CBL-CCL-GR  
Open hole - CNL-LDT TD to 2190', AIT - Surface to TD

**Coring Program:** None

### **Mud Program:**

Interval	Type	Weight	Vis.	Fluid Loss
0- 120'	Spud	8.4-9.0	40-50	no control
120-3300'	FW	8.4-9.0	32-45	no control

### **Casing Program (as listed, equivalent, or better):**

Hole Size	Depth Interval	Csg. Size	Wt.	Grade
8 3/4"	0 - 120'	7"	20.0#	J-55
6 1/4"	0 - 3300'	2 7/8"	6.5#	J-55

*200' min ft*

**Float Equipment:** 7" surface casing - saw tooth guide shoe.  
Centralizers will be run in accordance with Onshore Order #2.

2 7/8" production casing - float shoe on bottom. Three centralizers run every other joint above shoe. Seven centralizers run every 3rd joint to the base of the Ojo Alamo @ 2199'. Two turbolizing type centralizers - one below and one into the base of the Ojo Alamo @ 2199'. Standard centralizers thereafter every fourth joint up to the base of the surface pipe.

**Wellhead Equipment:** 7" x 2 7/8" 2000 psi screw on independent wellhead.

### **Cementing:**

7" surface casing - cement with 46 sx Class "B" cement with 0.25 pps flocele and 3% calcium chloride (54 cu.ft. of slurry, 200% excess to circulate to surface). WOC 8 hrs. Test casing to 600 psi/30 minutes.

2 7/8" production casing - Lead w/462 sacks Premium Lite cement with 3% calcium chloride, 0.25 pps Flocele, 5 pps LCM-1, 0.4% FL-52 and 0.4% SMS. Tail with 90 sacks Type III cement with 1% calcium chloride, 0.25 pps Flocele, 0.2% FL-52 (1109 cu.ft. of slurry, 100% excess to circulate to surface).

**Note:** If open hole logs are run, cement volumes will be based on 25% excess over caliper volumes.

**BOP and tests:**

Surface to TD - 11" 2000 psi (minimum double gate BOP stack (Reference Figure #1). Prior to drilling out surface casing, test rams to 600 psi/30 min.

Completion - 7 1/16" 2000 psi (minimum) double gate BOP stack (Reference Figure #2). Prior to completion operations, test rams and casing to 2000 psi/15 min.

From surface to TD - choke manifold (Reference Figure #3).

Pipe rams will be actuated to least once each day and blind rams actuated once each trip to test proper functioning. An upper kelly cock valve with handle and drill string safety valves to fit each drill string will be maintained and available on the rig floor.

**BOP and tests (if a coiled tubing drilling rig is utilized):**

Surface to TD: 7 1/16" 2000 psi (minimum) Torus annular BOP stack (Reference Figure #1B). Prior to drilling out surface casing, test annular BOP to 600 psi/30 minutes.

Completion: 7 1/16" 2000 psi (minimum) double gate BOP stack (Reference Figure #2). Prior to completion operations, test blind rams and casing to 1500 psi/30 minutes; all pipe rams and casing to 1500 psi/30 minutes each.

From surface to TD: choke manifold (Reference Figure #3).

The annular BOP will be actuated to close on drill pipe (coiled tubing) at least once each day and to close on open hole once each trip to test proper functioning.

**Additional information:**

- \* The Pictured Cliffs formation will be completed.
- \* Anticipated pore pressure for the Pictured Cliffs is 500 psi.
- \* This gas is dedicated.
- \* The southeast quarter of section 9 is dedicated to the Pictured Cliffs.

E. J. Wiles  
Drilling Engineer

5/1/01  
Date