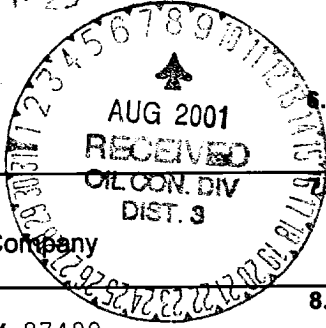
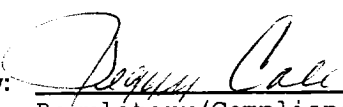


UNITED STATES
DEPARTMENT OF THE INTERIOR
BUREAU OF LAND MANAGEMENT

APPLICATION FOR PERMIT TO DRILL, DEEPEN, OR PLUG BACK

1a. Type of Work DRILL	2001 JUL 13 PM 1:25 070	5. Lease Number NM-03600 Unit Reporting Number
1b. Type of Well GAS		6. If Indian, All. or Tribe
2. Operator BURLINGTON RESOURCES Oil & Gas Company		7. Unit Agreement Name San Juan 29-7 Unit
3. Address & Phone No. of Operator PO Box 4289, Farmington, NM 87499 (505) 326-9700		8. Farm or Lease Name San Juan 29-7 Unit 9. Well Number 63B
4. Location of Well 1490' FNL, 540' FEL Bottom Hole location: 350' FNL, 2175' FEL Latitude 36° 44.6, Longitude 107° 33.1		10. Field, Pool, Wildcat Blanco Mesaverde 11. Sec., Twn, Rge, Mer. (NMPM) H Sec. 10, T-29-N, R-7-W API# 30-039-26779
14. Distance in Miles from Nearest Town 24.5 miles from Blanco		12. County Rio Arriba 13. State NM
15. Distance from Proposed Location to Nearest Property or Lease Line 540'	This action is subject to technical and procedural review pursuant to 43 CFR 3165.3 and appeal pursuant to 43 CFR 3165.4.	17. Acres Assigned to Well 320 E/2
16. Acres in Lease		
18. Distance from Proposed Location to Nearest Well, Drlg, Compl, or Applied for on this Lease 80'		20. Rotary or Cable Tools Rotary
19. Proposed Depth 5801' TVD, 6353' MD		22. Approx. Date Work will Start
21. Elevations (DF, FT, GR, Etc.) 6374' GR		
23. Proposed Casing and Cementing Program See Operations Plan attached		NOTICE: ANY WORK PERFORMED ARE SUBJECT TO COMPLIANCE WITH ATTACHED "GENERAL REQUIREMENTS".
24. Authorized by:  Regulatory/Compliance Supervisor		5-4-01 Date

PERMIT NO. _____ APPROVAL DATE _____
APPROVED BY /s/ Joel Farrell TITLE _____ DATE AUG - 2

Archaeological Report to be submitted
Threatened and Endangered Species Report to be submitted
NOTE: This format is issued in lieu of U.S. BLM Form 3160-3
Title 18 U.S.C. Section 1001, makes it a crime for any person knowingly and willfully to make to any department or agency of the United States any false, fictitious or fraudulent statements or presentations as to any matter within its jurisdiction.

HOLD C104 FOR Div. Survey
NMOCD

[Handwritten mark]

DISTRICT I
625 N. French Dr., Hobbs, N.M. 88240

State of New Mexico
Energy, Minerals & Natural Resources Department

Form C-102
Revised August 15, 2000

DISTRICT II
311 South First, Artesia, N.M. 88210

Submit to Appropriate District Office
State Lease - 4 Copies
Fee Lease - 3 Copies

DISTRICT III
1000 Rio Brazos Rd., Aztec, N.M. 87410

OIL CONSERVATION DIVISION
2040 South Pacheco
Santa Fe, NM 87505

DISTRICT IV
2040 South Pacheco, Santa Fe, NM 87505

AMENDED REPORT

WELL LOCATION AND ACREAGE DEDICATION PLAT

¹ API Number 30-039-26779		² Pool Code 72319	³ Pool Name Blanco Mesaverde
⁴ Property Code 7465	⁵ Property Name SAN JUAN 29-7		⁶ Well Number 63B
⁷ OGRID No. 14538	⁸ Operator Name BURLINGTON RESOURCES OIL AND GAS, INC.		⁹ Elevation 6374' —

¹⁰ Surface Location

UL or lot no.	Section	Township	Range	Lot Idn	Feet from the	North/South line	Feet from the	East/West line	County
H	10	29-N	7-W		1490'	NORTH	540'	EAST	SAN JUAN

¹¹ Bottom Hole Location If Different From Surface

UL or lot no.	Section	Township	Range	Lot Idn	Feet from the	North/South line	Feet from the	East/West line	County
B	10	29N	7W		350	N	2175	E	

¹² Dedicated Acres E/320	¹³ Joint or Infill	¹⁴ Consolidation Code	¹⁵ Order No.
--	-------------------------------	----------------------------------	-------------------------

NO ALLOWABLE WILL BE ASSIGNED TO THIS COMPLETION UNTIL ALL INTERESTS HAVE BEEN CONSOLIDATED OR A NON-STANDARD UNIT HAS BEEN APPROVED BY THE DIVISION

16 CALC'D CORNER
N 89-57-00 W
5297.16 (R)

360' BHL

— CALC'D CORNER
FD. WC 2 1/2"
1913 G.L.O. BC
N 89-57-00 14.52'

NMNM-03600

1490'

175'

784'

540'

LAT: 36°44.6' N.
LONG: 107°33.1' W.

1141'

S 00-10-10 E
2631.27' (M)

10

FD 2 1/2" BC
G.L.O. 1913

NMSF-078399

PREHN FEE

17 OPERATOR CERTIFICATION


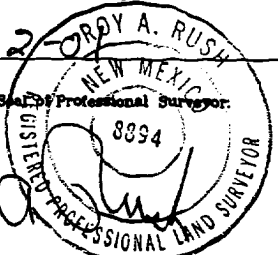
I hereby certify that the information contained herein is true and complete to the best of my knowledge and belief.

Peggy Cole
Signature
Peggy Cole
Printed Name
Regulatory Supervisor
Title
5-4-01
Date

18 SURVEYOR CERTIFICATION

I hereby certify that the well location shown on this plat was plotted from field notes of actual surveys made by me or under my supervision, and that the same is true and correct to the best of my belief.

3-22-01
Date of Survey
ORRY A. RUSH
Signature and Seal of Professional Surveyor
8894
Certificate Number

OPERATIONS PLAN

Well Name: San Juan 29-7 Unit #63B
Location: 1490'FNL, 540'FEL, Section 10, T-29-N, R-7-W
Rio Arriba County, New Mexico
Latitude 36° 44.6, Longitude 107° 33.1
Formation: Blanco Mesaverde
Elevation: 6374'GL

<u>Formation Tops:</u>	<u>Top</u>	<u>Bottom</u>	<u>Contents</u>
Surface	San Jose	2266'	
Ojo Alamo	2266'	2426'	aquifer
Kirtland	2426'	2746'	gas
Fruitland	2746'	3221'	gas
Pictured Cliffs	3221'	3306'	gas
Lewis	3306'	3941'	gas
Intermediate casing	3556'		
Huerfano Bentonite	3941'	4234'	gas
Chacra	4234'	4976'	gas
Cliff House	4976'	5076'	gas
Menefee	5076'	5401'	gas
Point Lookout	5401'		gas
Total Depth	5801' TVD	6353' MD	

Logging Program: None

Mud Program:

<u>Interval</u>	<u>Type</u>	<u>Weight</u>	<u>Vis.</u>	<u>Fluid Loss</u>
0- 200'	Spud	8.4-8.9	40-50	no control
0- 4102' MD	Non-dispersed	8.4-9.0	30-60	less than 8
4102- 6353' MD	air/mist	n/a	n/a	n/a

Drilling:

Surface:

Drill to surface casing point of 200' and set 9 5/8" casing.

Intermediate:

Mud drill to the kick off point of 400'. At this point, the well will be directionally drilled by building 3.5 degrees per 100' with an azimuth of 304.89 degrees. The end of the build will be at a TVD of 1393.73', a MD of 1457.86', VS of 338.09', and an angle of 37.38 degrees. This angle will be held at an azimuth of 304.89 degrees until 2947.21' TVD, and 3422.72' MD. The angle will then be dropped at 3.5 degrees per 100' until intermediate casing point of 3556' TVD, 4102.02' MD, and 13.6 degrees inclination.

Production Hole:

The production hole will be drilled with an air hammer. It will drill out at intermediate casing point and fall at approximately 2 to 3 degrees per 100 feet and be vertical at a TD of 5801' TVD and 6353' TMD.

BURLINGTON RESOURCES OIL & GAS, INC.

SAN JUAN 29-7 UNIT #63B

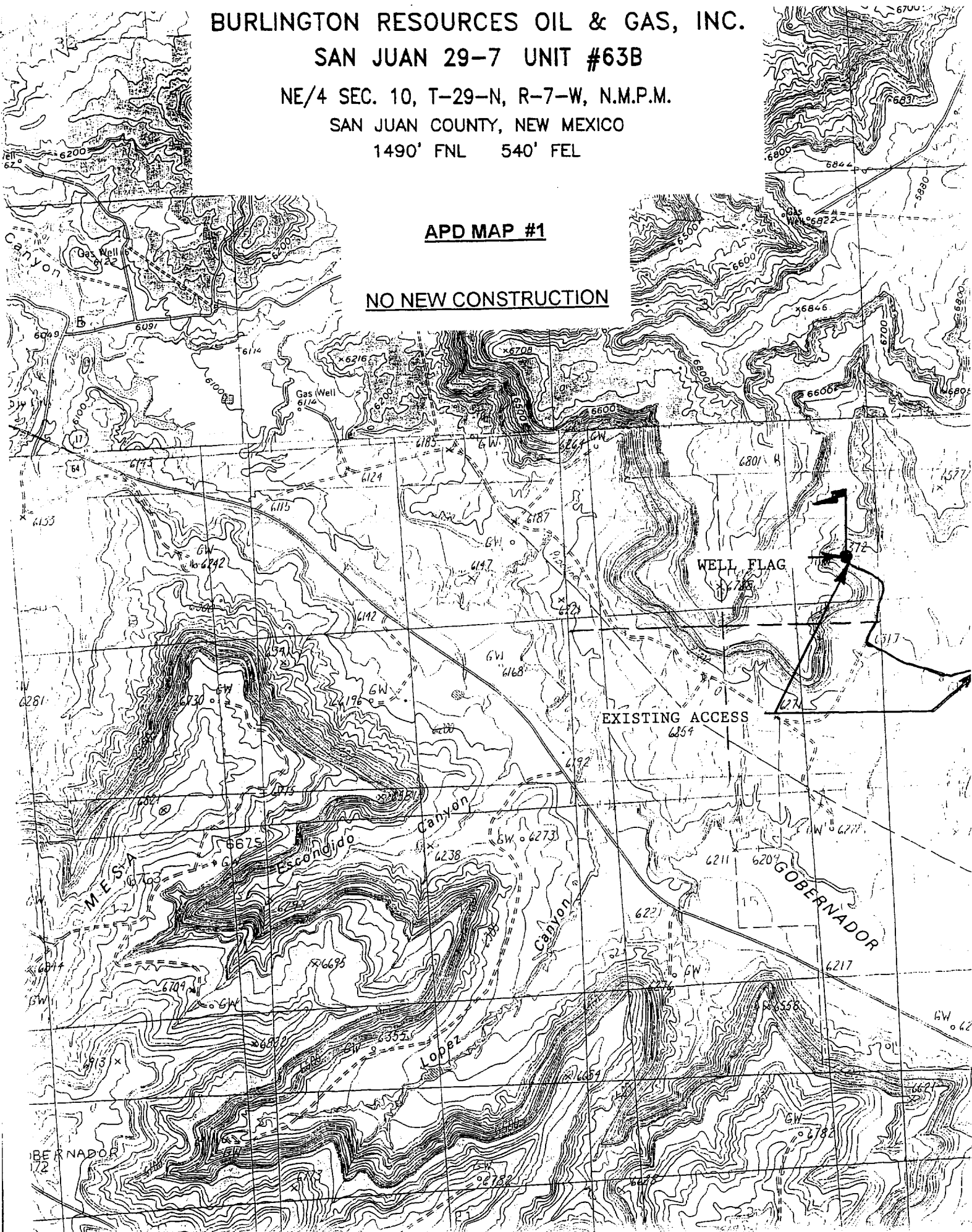
NE/4 SEC. 10, T-29-N, R-7-W, N.M.P.M.

SAN JUAN COUNTY, NEW MEXICO

1490' FNL 540' FEL

APD MAP #1

NO NEW CONSTRUCTION



Materials:

Casing Program:

<u>Hole Size</u> (inches)	<u>Measured</u> <u>Depth (ft)</u>	<u>TVD (ft)</u>	<u>Casing</u> <u>Size (in)</u>	<u>Weight</u> (lbs/ft)	<u>Grade</u>
12 1/4"	200'	200'	9 5/8"	32.3	H-40
8 3/4"	4102'	3556'	7"	20.0	J-55
6 1/4"	6353'	5801'	4 1/2"	10.5	J-55

Casing Equipment:

9 5/8" surface casing - sawtooth guide shoe.

7" intermediate casing - cement nose guide shoe on bottom, float collar one joint off bottom. Centralizers spaced as follows: (30) spaced every fourth joint from bottom to surface. Two turbolizing type centralizers, one below and one into the Ojo Alamo at 2266'.

4 1/2" production casing - saw took guide shoe on bottom, float collar, float collar, 6353' of 4 1/2" 10.5# J-55 ST&C csg.

Tubing:

6353' of 2 3/8", 4.7#, J-55 8rd EUE tubing with seating nipple one joint off bottom and an expendable check valve on bottom.

Wellhead Equipment:

9 5/8" x 7" x 2 3/8" - 11" (2000 psi) wellhead assembly.

Cementing

9 5/8" surface casing - cement with 159 sx Class "H" cement with 0.25 pps cellohane and 3% calcium chloride (188 cu.ft. of slurry, 200% excess to circulate to surface). WOC 8 hrs. Test casing to 600 psi for 30 minutes.

7" intermediate casing -

Lead w/593 sx 35/65 poz/Type III cement w/0.4% FL-52, 5 pps LCM-1, 0.25 pps Celloflake, 0.4% bwoc sodium metasilicate, 8% bentonite, 3% calcium chloride. Tail w/90 sx Type III cement w/1% calcium chloride, 0.25 pps Celloflake, 0.2% FL-52 (1387 cu.ft. of slurry, 125% excess to circulate to surface.) WOC minimum of 8 hours before drilling out intermediate casing. If cement does not circulate to surface, a CBL will be run during completion operations to determine TOC. Test casing to 1500 psi for 30 minutes.

See attached alternative intermediate lead slurry.

7" intermediate casing alternative two stage: Stage collar 3069'. First stage: cement with w/253 sx Type III cement w/1% calcium chloride, 0.25 pps Celloflake, 0.2% FL-52. Second stage: cement with 487 sx 35/65 poz/Type III cement w/0.4% FL-52, 5 pps LCF-1, 0.25 pps Celloflake, 0.4# bwoc sodium metasilicate, 8% bentonite, 3% calcium chloride (1387 cu.ft., 100% excess to circulate to surface).

4 1/2" production casing - cement with 183 sx 35/65 poz/Type III cement w/0.7% FL-52, 0.2% CD-32, 6.25 pps LCM-1, 0.25 pps Celloflake, 6% bentonite, 7 pps CSE (362 cu.ft.), 40% excess to cement 4 1/2" x 7" overlap). WOC a minimum of 18 hrs prior to completing.

Cement float shoe on bottom with float collar spaced on top of shoe joint.

BOP and Tests

Surface to intermediate TD - 11", 2000 psi double gate BOP stack (Reference Figure #1). Prior to drilling out surface casing, test rams and casing to 700 psi for 30 minutes.

Intermediate TD to Total Depth - 10" nominal, 2000 psi (minimum) double gate BOP stack (Reference Figure #1). Prior to drilling out intermediate casing, test rams and casing to 1500 psi (minimum) for 30 minutes.

Surface to Total Depth - choke manifold (Reference Figure #2).

Pipe rams will be actuated at least once each day and blind rams will be actuated once each trip to test proper functioning. A kelly cock valve and drill string safety valves to fit each drill string will be maintained and available on the rig floor.

Additional Information

- This gas is dedicated.
- The east half of Section 10 is dedicated to this well.
- New casing will be utilized.
- Pipe movement (reciprocation) will be done if hole conditions permit.
- No abnormal pressure zones are expected.

Drilling Engineer

Date

5/9/01