

District I
PO Box 1980, Hobbs, NM 88241-1980
District II
811 South First, Artesia, NM 88210
District III
1000 Rio Brazos Rd., Aztec, NM 87410
District IV

Energy, Minerals & Natural Resources Department

OIL CONSERVATION DIVISION
2040 South Pacheco
Santa Fe, NM 87505

Form C-101
Revised October 18, 1994
Instructions on back
Submit to Appropriate District Office
State Lease - 6 Copies
Fee Lease - 5 Copies

AMENDED REPORT

APPLICATION FOR PERMIT TO DRILL, RE-ENTER, DEEPEN, PLUGBACK, OR ADD A ZONE

| | | |
|------------------------------------------------------------------------------------------------------------------------|--------------------------------------------------|------------------------------------|
| ¹ Operator Name and Address. Burlington Resources Oil & Gas Company PO Box 4289, Farmington, NM 87499 | | ² OGRID Number 14538 |
| ³ API Number 30 - 039- 26830 | | |
| ⁴ Property Code 7465 | ⁵ Property Name San Juan 29-7 Unit | ⁶ Well No. 180 |

⁷ Surface Location

| UL or lot no. | Section | Township | Range | Lot Idn | Feet from the | North/South line | Feet from the | East/West line | County |
|---------------|---------|----------|-------|---------|---------------|------------------|---------------|----------------|------------|
| A | 36 | 29N | 7W | | 745' | North | 1120' | East | Rio Arriba |

⁸ Proposed Bottom Hole Location If Different From Surface

| UL or lot no. | Section | Township | Range | Lot Idn | Feet from the | North/South line | Feet from the | East/West line | County |
|---------------|---------|----------|-------|---------|---------------|------------------|---------------|----------------|--------|
| | | | | | | | | | |

| | |
|----------------------------------------------------------------------|-------------------------------|
| ⁹ Proposed Pool 1 Blanco Pictured Cliffs, <i>South</i> | ¹⁰ Proposed Pool 2 |
|----------------------------------------------------------------------|-------------------------------|

| | | | | |
|-----------------------------------|---------------------------------------|--------------------------------------------|------------------------------------|--------------------------------------------------|
| ¹¹ Work Type Code N | ¹² Well Type Code G | ¹³ Cable/Rotary Rotary | ¹⁴ Lease Type Code S | ¹⁵ Ground Level Elevation 6443' GR |
| ¹⁶ Multiple N | ¹⁷ Proposed Depth 3480' | ¹⁸ Formation Pictured Cliffs | ¹⁹ Contractor N/a | ²⁰ Spud Date N/a |

²¹ Proposed Casing and Cement Program

| Hole Size | Casing Size | Casing weight/foot | Setting Depth | Cu.ft. of Cement | Estimated TOC |
|-----------|-------------|--------------------|---------------------|------------------|---------------|
| 9 7/8" | 7" | 20# | 120' <i>of 200'</i> | 32 cu.ft. | Surface |
| 6 1/4" | 2 7/8" | 6.5# | 3480' | 1170 cu.ft. | Surface |
| | | | | | |
| | | | | | |
| | | | | | |

²² Describe the proposed program. If this application is to DEEPEN or PLUG BACK give the data on the present productive zone and proposed new productive zone. Describe the blowout prevention program, if any. Use additional sheets if necessary.

11" 2000 psi minimum double gate BOP or 7 1/6" 2000 psi minimum Torus annular BOP stack if CTD unit is utilized.

²³ I hereby certify that the information given above is true and complete to the best of my knowledge and belief.

Signature:

Printed name: Peggy Cole

Title: Regulatory/Compliance Supervisor

Date:

Phone: 505-326-9700

OIL CONSERVATION DIVISION

Approved by

Title:

Approval Date:

Conditions of Approval:
Attached ☐

Expiration Date:

OCT - 5 2001

OCT - 5 2002

District I
PO Box 1980, Hobbs, NM 88241-1980

District II
PO Drawer DD, Artesia, NM 88211-0719

District III
1000 Rio Brazos Rd., Aztec, NM 87410

District IV
PO Box 2088, Santa Fe, NM 87504-2088

State of New Mexico
Energy, Minerals & Natural Resources Department

OIL CONSERVATION DIVISION
PO Box 2088
Santa Fe, NM 87504-2088

Form C-102
Revised February 21, 1994
Instructions on back
Submit to Appropriate District Office
State Lease - 4 Copies
Fee Lease - 3 Copies

☐ AMENDED REPORT

WELL LOCATION AND ACREAGE DEDICATION PLAT

| | | | |
|-------------------------------------|-------------------------------------------------------------|---------------------------------------------|------------------------------------------------------|
| *API Number 30-039- 26830 | | *Pool Code 72359 72439 | *Pool Name Blanco Pictured Cliffs, <i>South H</i> |
| *Property Code 7465 | *Property Name SAN JUAN 29-7 UNIT | | *Well Number 180 |
| *OGRID No. 14538 | *Operator Name BURLINGTON RESOURCES OIL & GAS COMPANY LP | | *Elevation 6443' |

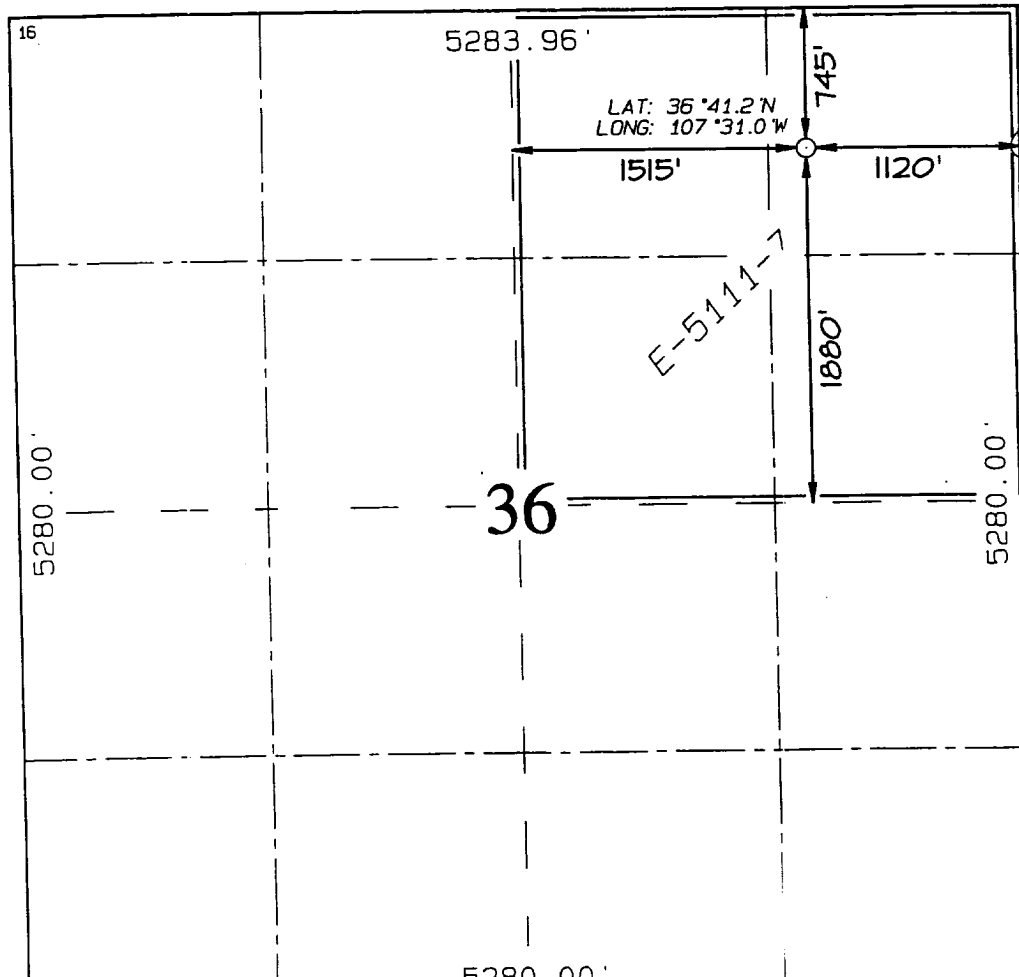
10 Surface Location

| UL or lot no. | Section | Township | Range | Lot Idn | Feet from the | North/South line | Feet from the | East/West line | County |
|---------------|---------|----------|-------|---------|---------------|------------------|---------------|----------------|------------|
| A | 36 | 29N | 7W | | 745 | NORTH | 1120 | EAST | RIO ARriba |

11 Bottom Hole Location If Different From Surface

| UL or lot no. | Section | Township | Range | Lot Idn | Feet from the | North/South line | Feet from the | East/West line | County |
|----------------------------------------|---------|----------|-------|---------|--------------------|-----------------------|---------------|----------------|--------|
| 12 Dedicated Acres 160 <i>N 1/4</i> | | | | | 13 Joint or Infill | 14 Consolidation Code | 15 Order No. | | |

NO ALLOWABLE WILL BE ASSIGNED TO THIS COMPLETION UNTIL ALL INTERESTS HAVE BEEN CONSOLIDATED OR A NON-STANDARD UNIT HAS BEEN APPROVED BY THE DIVISION



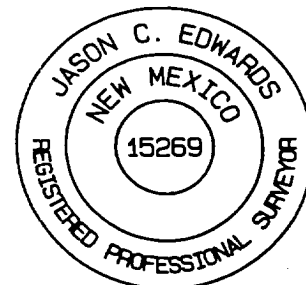
17 OPERATOR CERTIFICATION
I hereby certify that the information contained herein is true and complete to the best of my knowledge and belief.

Peggy Cole
Signature
Peggy Cole
Printed Name
Regulatory Supervisor
Title
9-7-01
Date

18 SURVEYOR CERTIFICATION
I hereby certify that the well location shown on this plat was plotted from field notes of actual surveys made by me or under my supervision, and that the same is true and correct to the best of my belief.

Date of Survey: AUGUST 2, 2001

Signature and Seal of Professional Surveyor



JASON C. EDWARDS
Certificate Number 15269