

submitted in lieu of Form 3160-5

UNITED STATES
DEPARTMENT OF THE INTERIOR
BUREAU OF LAND MANAGEMENT

RECEIVED
BLY

Sundry Notices and Reports on Wells
97 MAR 30 PM 12:56

1. Type of Well
GAS

2. Name of Operator

**BURLINGTON
RESOURCES**

OIL & GAS COMPANY

3. Address & Phone No. of Operator

PO Box 4289, Farmington, NM 87499 (505) 326-9700

4. Location of Well, Footage, Sec., T, R, M

1650' FNL, 1650' FEL, Sec. 4, T-29-N, R-8-W, NMPM
G

5. Lease Number

SF-078487

6. If Indian, All. or
Tribe Name

7. Unit Agreement Name

8. Well Name & Number
Hill SRC #2

9. API Well No.
30-045-08764

10. Field and Pool
Blanco Mesaverde

11. County and State
San Juan Co, NM

12. CHECK APPROPRIATE BOX TO INDICATE NATURE OF NOTICE, REPORT, OTHER DATA

Type of Submission

☒ Notice of Intent
☐ Subsequent Report
☐ Final Abandonment

Type of Action

☐ Abandonment ☐ Change of Plans
☐ Recompletion ☐ New Construction
☐ Plugging Back ☐ Non-Routine Fracturing
☐ Casing Repair ☐ Water Shut off
☐ Altering Casing ☐ Conversion to Injection
☒ Other - Pay add

13. Describe Proposed or Completed Operations

It is intended to add pay to the Mesaverde formation of the subject well according to the attached procedure and wellbore diagram.

RECEIVED
MAY - 9 1997

OIL CON. DIV.
DIST. 3

14. I hereby certify that the foregoing is true and correct.

Signed [Signature] (JME6) Title Regulatory Administrator Date 4/30/97

(This space for Federal or State Office use)

APPROVED BY AS/ Duane W. Spencer Title _____

Date MAY - 6 1997

CONDITION OF APPROVAL, if any:

NMOC

Hill SRC #2
Burlington Resources Oil & Gas
Blanco Mesaverde Workover
UnitG-Sec4-T29N-R08W
Lat: 36° 45' 25"
Long: 107° 40' 36"

-
- Comply with all BLM, NMOCD, & BR rules & regulations.
 - **Always Hold Safety Meetings.** Place fire and safety equipment in strategic locations.
 - 2-7/8" buttress frac string (5300' +/-) required.
 - 2-3/8" frac string (300' +/-) required.
 - Spot and fill 11 frac tanks with 2% KCl water.
 - Use drill gas for all operations.
 - **(3) 4-1/2" packers, (1) 4-1/2" RBP, and (1) 4-1/2" CIBP** required for 4-1/2" 10.5# J55 pipe.
 - Prepare for immediate flowback of Lewis.
-

The well is currently completed in the Cliffhouse and the Point Lookout. Cumulative production is 3,861 MMCF from the Mesaverde. Menefee pay will be added and stimulated with a 25# xlink frac. Lewis pay will be added and stimulated with a 25# xlink frac.

NOTE: Cliffhouse perfs open 4810' - 4878'

Point Lookout perfs open 5276' - 5400'

1. MIRU. Record and report SI pressures on tubing, casing, & bradenhead. Blow down casing & tubing. Kill well w/ 2% KCl. ND WH, NU BOP.
2. TOOH with 2-3/8" tubing. Rabbit and strap tubing. Visually inspect tubing, note any scale in tubing. Lay down any bad tubing.
3. PU 3-7/8" bit and 4-1/2", 10.5# casing scraper on 2-3/8" tbg, clean out w/ gas to PBTD @ 5550'. TOOH and LD bit and scraper.
4. RU wireline unit. Set CIBP at 5250' to TA the Point Lookout.
5. PU 4-1/2" packer on 2-3/8" tubing and TIH. Set packer at 4890' and pressure test CIBP to 3800 psi for 10 minutes. If casing fails, isolate hole(s). Engineering will provide squeeze design if required.
6. Release packer, pull up, and set at 4780'. Pressure test backside to 750 psig. Hold for 10 minutes. If casing fails, isolate hole(s). Engineering will provide squeeze design if required.
7. Complete all squeeze cementing operations. WOC recommended time. Drill out cement. Pressure test to 1000 psi.

Menefee Completion:

8. If already in hole, spot 250 gallons 15% HCL acid (w/ 2 gal/1000 corrosion inhibitor) across MN. TOOH, standing 2-3/8" back. Change rams to 2-7/8". (If separate trip is required, skip spotting acid.)
9. RU wireline under packoff. Perforate MN (top-down if in acid) @ the following depths with a 3-1/8" HSC gun w/ Owen 302T 10g charges (0.297" hole, 11.43" penetration), 1 SPF @ 120 degree phasing.

4904'	4908'	4912'	4924'	4926'	4956'
4958'	4976'	4978'	5003'	5006'	5010'
5043'	5045'	5076'	5078'	5082'	5128'
5132'	5136'	5140'	5170'	5172'	5176'
5182'					

(25 total holes, 278' gross interval)

10. PU 4-1/2" fullbore packer, 2 joints 2-3/8" frac string, and 2-7/8" buttress frac string. Set packer at 4890'.

11. RU stimulation company. Pressure test surface lines to 6800 psi. **Max STP = 5800 psi.** Prepare to break down MN w/ 1000 gallons **15% HCL acid** (w/ 2 gal/1000 corrosion inhibitor) and 50 7/8" 1.3 s.g. ball sealers. Release pressure, RD stimulation company. Release packer & TOOH. Run junk basket and recover balls.

12. TIH with frac liner (two 4-1/2" packers and 110' of 2-3/8", 4.7#, J-55 frac string). Set packers at 4780' and 4890'. TOOH. TIH with 4-1/2" packer, 2 joints 2-3/8" frac string, and 2-7/8" buttress frac string. Set packer at 4750'.

13. RU stimulation company. Pressure test surface lines to 6800 psi. **Max surface STP = 5800 psi.** Hold 500 psi on annulus. Fracture stimulate the MN w/100,000# 20/40 Arizona sand in 25# Xlink. See attached frac schedule for details. *(4 frac tanks needed)*

14. Release packer, TOOH. TIH, release frac liner packers, and TOOH.

15. RU wireline under packoff. Make 4-1/2" gauge ring run to 4800'. Set 4-1/2" RBP @ 4780'.

Lewis Completion:

16. Perforate Lewis @ the following depths w/ 3-1/8" HSC gun w/ Owen 306 12g charges (0.375" hole, 11" penetration), at 120 degree phasing.

3850-3910' (1 SPF)	3990-4150' (1 SPF)
4716' (2 SPF)	4718' (2 SPF)
4727' (2 SPF)	4729' (2 SPF)
4744' (2 SPF)	4746' (2 SPF)
4752' (2 SPF)	4754' (2 SPF)

(236 total holes, 904' gross interval)


17. PU 4-1/2" fullbore packer, 2 joints 2-3/8" frac string, and 2-7/8" buttress frac string. Set packer below Lewis perforations. Test RBP @ 4780' to 3800 psi. Release packer, come up hole and reset packer 150' +/- above top Lewis perf. Hold 500 psi on annulus during frac job.

18. RU immediate flowback equipment.


Hill SRC #2
Burlington Resources Oil & Gas
04/25/97

19. RU stimulation company. Pressure test surface lines to 6800 psi. **Maximum STP = 5800 psi.** Pump 1000 gals 15% HCl acid, followed by 2% KCl until formation breaks down. Begin frac job. Fracture stimulate the Lewis w/ 200,000# 20/40 Arizona sand in 25# XLink. See attached frac schedule for details. *(7 frac tanks needed)*
20. Flow back well immediately after shutdown -- **NOTE: Time from frac shut-down until flow tee is opened for flow back should be around 30 seconds. Time is critical to achieve reverse gravel packing. Begin flowback on 1/4" choke, increase as needed.** Flowback should continue for as long as necessary to release packer.
21. Release packer & TOOH laying down 2-7/8" tubing. Change out rams to 2-3/8".
22. TIH w/retrieving head on 2-3/8" tubing and clean out to RBP @ 4780'. Pull up above Lewis perfs, obtain pitot gauge. Latch onto RBP, TOOH, and LD RBP.
23. TIH w/ 3-7/8" bit on 2-3/8" tubing and clean out to CIBP @ 5250'. Pull up above Lewis perfs, obtain pitot gauge. Drill up CIBP, clean out to PBTD @ 5550'. Clean up to +/- 5 BPH and trace to no sand. Obtain final pitot gauge. TOOH.
24. Prepare to run production tubing string as follows: expendable check, one joint 2-3/8" tubing, 1.78" seating nipple, and remaining tubing. Land tubing @ 5400' +/-.
25. ND BOP, NU WH. Pump off expendable check and flow well up tubing to ensure check pumped off. RD & release rig to next location.

Concur:

 4/25/97
Northeast Basin Team Leader

Approved:

 4/30/97
Drilling Superintendent

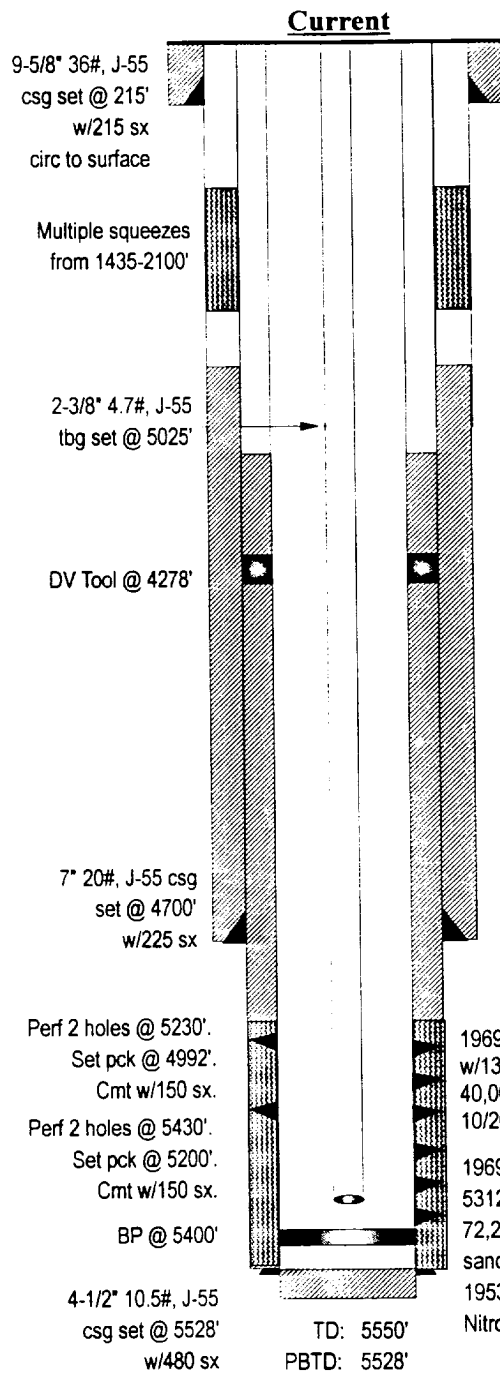
Production Engineers: **Gaye White**
326-9875-work
327-8904-pager
326-6534-home

Joan Easley
599-4026-work
324-2717-pager
327-6843-home

VGW

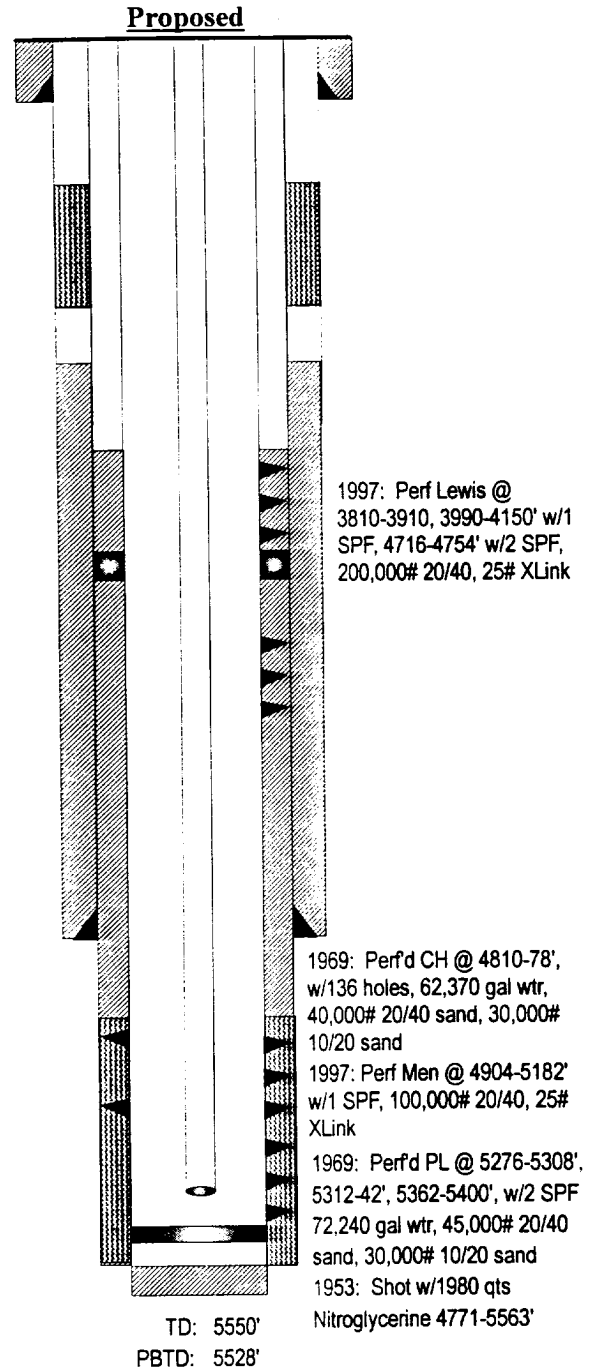
Hill SRC #2

Blanco Mesaverde
Unit G, Section 4, T29N, R8W
San Juan County, NM
Elevation: 6387' GR
LAT: 36° 45' 25" / LONG: 107° 40' 36"
date spud: 02-13-53



Formation Tops:

Kirtland	@ 2152'
Fruitland	@ 2780'
Pctd Cliffs	@ 3080'
Cliffhouse	@ 4813'
Pt Lookout	@ 5247'
Mancos	@ 5412'



PERTINENT DATA SHEET
HILL SRC #2

Location: 1650' FNL, 1650' FEL
Unit G, Section 4, T29N, R8W \-
San Juan County, New Mexico

Elevation: 6387' GR
LAT: 36° 45' 25"
LONG: 107° 40' 36"

Field: Blanco Mesaverde

GWI: 100%
NRI: 82.5%

Spud Date: 02/13/53
Completion Date: 03/31/53

TD: 5550'
PBTD: 5528'

DP#: 28181

Casing Record:

Hole Size	Casing Size	Weight & Grade	Depth Set	Sxs Cmt	Cement Top
13-3/4"	9-5/8"	36#, J-55	215'	215 (~254 ft3)	surface
8-3/4"	7"	20#, J-55	4700'	225 (~266 ft3)	3030' (TS)
6-1/4"	4-1/2"	10.5#, J-55	5528'	1st Stage: 150 sx	
		DV Tool @ 4278'		2nd Stage: 330 sx	3700' (CBL)
		Float collar @ 5497'			

Tubing Record:

Tubing Size	Weight & Grade	Depth Set	Jts	BHA
2-3/8"	4.7# J-55	5025'	161	orange peeled jt & perf jt

Formation Tops:

Pictured Cliffs	3080'	Pt. Lookout	5247'
Cliffhouse	4813'	Mancos	5412'

Logging Record:

ES-Induction, Csg-Inspection, GR-Neutron, CBL

Stimulation:

1953: 1980 qts. Nitroglycerine 4771-5563'
1969: 5276-5308', 5312-42', 5362-5400', w/2 SPF, 72,240 gal wtr, 45,000# 20/40, 30,000# 10/20
4810-78', 136 holes, 62,370 gal wtr, 40,000# 20/40, 30,000# 10/20

Workover History:

06/69: Tbg stuck. LD 67 jts(2120'). TIH w/overshot. LD 87 jts. Set CR @ 4650'. Ran csg-insp. log. Sq.open hole w/300 sx. TIH w/pck to 1435'. Sq. w/300 sx. Drill out 1450-2075'. PT csg to 700# OK. Set whipstock @ 4603'. Mill window. Set pck @ 4480'. Cmt w/200 sx. Set pck @ 1694'. Cmt w/150 sx. WOC. Cmt w/150sx. Drill out to 2105'. PT to 1000#. Leakoff 100# in 15min. Set pck @1604'. Cmt w/250 sx.WOC. Cmt w/200 sx. Drill out to 2100'. PT to 1500#. Lost 400# in 10 min. Drill out 4590-4600'. Drilled to 4663' w/6-1/4" bit. Lost DC in hole. Couldn't get overshot thru window. TIH w/taper top and retrieved fish. Drilled to 4997'. Stuck DP. Freepoint @ 4614'. Went in w/string shot. Backed off DP @ 4581'. Ran overshot, jars, bumper sub. Jarred on fish. Did not recover. Set CR @ 4555'. Sq. w/150 sx. Sq. hole 1525-2100' w/150 sx. Drill out. Set whipstock @ 4517'. Cut 2-1/2' window. Mill out window. Lost circ. Cmt w/300 sx. Drill out 4420-4517'. Cutting window 4517-4536'. Set pck @ 4402'. Sq. w/75 sx. Drill to TD of 5550'. Ran 4-1/2" csg. Set @ 5529'. DV Tool @ 4278'. Cmt 1st stage w/150 sx. Cmt 2nd stage w/330 sx. Drill out to 5514'. Ran GR-Neut & CBL. No bond across PL. Perf 2 holes @ 5430'. Set pck @ 5200'. Cmt w/150 sx. Drill out. Ran CBL. No bond. Perf 2 holes @ 5230'. Set pck @ 4992'. Cmt w/150 sx. Drill out. Ran CBL. Good bond. Perf 5276-5400'. Frac PL. Set BP @ 4960'. Perf & frac upper zone. Drilling BP. Push BP to 5400'. Ran tbg. Sq. holes @ 1905-2100' w/200 sx. WOC. END OF RECORDS.

Production History:

Initial Deliverability:	6,154 MCF/6 hr	ISIP: 1091
Latest Deliverability:	143 MCFD, <1 BOPD	CUMS: 7,169 MMCF, 9,988 BO

Transporter:

Oil/Condensate: Giant Gas: El Paso