

UNITED STATES
DEPARTMENT OF THE INTERIOR
BUREAU OF LAND MANAGEMENT

Sundry Notices and Reports on Wells

RECEIVED
BLM

99 MAR -4 PM 2:20
Lease Number
SF-079514

070 FARMINGTON, NM
6. If Indian, All. or
Tribe Name

1. Type of Well
GAS

2. Name of Operator

**BURLINGTON
RESOURCES**

OIL & GAS COMPANY

7. Unit Agreement Name
San Juan 29-7 Unit

3. Address & Phone No. of Operator

PO Box 4289, Farmington, NM 87499 (505) 326-9700

8. Well Name & Number
San Juan 29-7 U#76R

9. API Well No.
30-039-20319

4. Location of Well, Footage, Sec., T, R, M

1480' FSL 925' FWL, Sec. 18, T-29-N, R-7-W, NMPM

10. Field and Pool
Blanco Mesaverde

11. County and State
Rio Arriba Co, NM

12. CHECK APPROPRIATE BOX TO INDICATE NATURE OF NOTICE, REPORT, OTHER DATA

Type of Submission

Type of Action

<input checked="" type="checkbox"/> Notice of Intent	<input type="checkbox"/> Abandonment	<input type="checkbox"/> Change of Plans
<input type="checkbox"/> Subsequent Report	<input type="checkbox"/> Recompletion	<input type="checkbox"/> New Construction
<input type="checkbox"/> Final Abandonment	<input type="checkbox"/> Plugging Back	<input type="checkbox"/> Non-Routine Fracturing
	<input type="checkbox"/> Casing Repair	<input type="checkbox"/> Water Shut off
	<input type="checkbox"/> Altering Casing	<input type="checkbox"/> Conversion to Injection
	<input checked="" type="checkbox"/> Other -	

13. Describe Proposed or Completed Operations

It is intended to add Lewis pay to the Mesaverde formation of the subject well according to the attached procedure and wellbore diagram.

14. I hereby certify that the foregoing is true and correct.

Signed Chip Harroden Title Regulatory Administrator Date 3/2/99
TLW

(This space for Federal or State Office use)

APPROVED BY Chip Harroden Title Acting Team Lead Date 3/12/99
CONDITION OF APPROVAL, if any:

Title 18 U.S.C. Section 1001, makes it a crime for any person knowingly and willfully to make to any department or agency of the United States any false, fictitious or fraudulent statements or representations as to any matter within its jurisdiction.

San Juan 29-7 Unit #76R
Lewis Shale Payadd Procedure
L 18 29N 07W
Rio Arriba County, NM
Latitude: 36 Deg., 43.38 Min
Longitude: 107 Deg., 36.92 Min.

Summary:

The subject well is a 1999 Lewis Shale payadd in 7" and 4-1/2" casing. This well was drilled in 1970 and was completed in the Point Lookout and Cliffhouse intervals. The Pt. Lookout interval was stimulated w/ approximately 64,000 lbs. total sand and 52,000 gal. total slickwater. The Cliffhouse interval was stimulated w/ approximately 40,000 lbs. total sand and 41,000 gal. total slickwater and placed on production. The Lewis will be perforated and fracture stimulated in two (2) stages with 268 total tons of liquid CO₂ and 95,000 lbs. total 40/70 mesh sand. The new stimulation technique will test the viability of a liquid CO₂ and sand stimulation within the Lewis Shale interval. The well will then be cleaned-up, tubing landed in the Mesaverde and placed on production.

Comply to all NMOCD, BLM and BR regulations. Conduct daily safety meetings for all personnel on location. Notify BR regulatory (Peggy Bradfield 326-9727) and the appropriate Regulatory Agency prior to pumping any cement job and after CBL is run. If an unplanned cement job is required, approval is required before the job can be pumped. If verbal approval is obtained, document the approval in Dims. Allow adequate notice prior to the pump time for the Agency to witness the cementing operation.

- Inspect location and wellhead and install rig anchors prior to rig move.
- Construct blow pit.
- **DURING CO₂ STIMULATION, ONLY AUTHORIZED PERSONNEL ARE ALLOWED ON LOCATION. ONLY CO₂ EXPERIENCED AND APPROVED STIMULATION PERSONNEL AND PUMP EQUIPMENT ARE ALLOWED ON LOCATION.**

1. MOL, hold safety meeting and RU completion rig. Insure all safety equipment is strategically located and functioning properly. NU relief lines to blow pit. Set one (1) 400 BBL frac tank and fill w/ 2% KCL. Blow well down and kill well w/ 2% KCL water as necessary. ND wellhead and NU 7-1/16" 3M BOP, stripping head and blooie line. Operationally test BOP.

2. TOOH w/ approximately 189 jts. 2-3/8" Mesaverde tubing set at +/- **5973'** and stand back. Inspect tubing and replace bad tubing as necessary**.

****NOTE:** If existing tbg. is scaled-up, contact production engineer and a scale analysis will be run. This will determine if we will pump acid down the 2-3/8" 4.7# J-55 workstring and acid wash perforations across the Point Lookout, Menefee and Cliffhouse interval.

3. RU wireline. RIH w/ 4-1/2" gauge ring and check wellbore for obstructions to PBTD @ **6025'**. POOH.**

****NOTE:** If obstructions are encountered, PU 3-7/8" bit and 4-1/2" 10.5# csg. scraper on 2-3/8" 4.7# J-55 workstring and CO to PBTD @ **6025'**. TOOH

4. TIH w/ 4-1/2" CIBP, on/off tool, 4-1/2" fullbore pkr and approximately 167 jts. 2-3/8" 4.7# J-55 workstring and tubing set CIBP @ +/- **5200'**. Load hole down tubing w/ 22 bbls 2% KCL for logging and perforating. Set pkr @ +/- **3848'**. RU wireline w/ packoff and pump in tee. RIH w/ slimhole GR\CCL\CBL and log from **5200'** to **3800'****. TOOH w/ slimhole GR\CCL\CBL logging tool. RIH w/ TDT logging tool and log from **5200'** to **3800'****. TOOH w/ TDT logging tool. RU stimulation company. Pressure test surface lines to **4800** psi and pressure test CIBP to **3800** psi (80% of burst of 4-1/2" 10.5# csg). RD stimulation company. Release pkr and TOOH w/ workstring and pkr.

** Correlate to GR-Ind log.

San Juan 29-7 Unit #76R
Lewis Shale Payadd Procedure
L 18 29N 07W
Rio Arriba County, NM
Latitude: 36 Deg., 43.38 Min
Longitude: 107 Deg., 36.92 Min.

1st Stage – Lower Lewis Shale

5. RIH w/ CCL on top of perforating guns**. Perforate the Lower Lewis Shale interval with **3-1/2" HPG gun system w/ 37J UJ HMX charges**. These are 34 gram charges with a 0.46" hole and 34.0" penetration. Shoot 140 holes bottom up in two (2) gun runs @ **2 SPF 60° Phase** in 2% KCL at the following depths: **1st gun run – 10' gun @ 5155'-5145'***, 10' gun @ 5100'-5090'***, 10' gun @ 5045'-5035'***, 10' gun @ 4975'-4965'***, 2nd gun run – 10' gun @ 4925'-4915'***, 10' gun @ 4860'-4850'***, 10' gun @ 4780'-4770'*****. RD wireline company.

** NOTE: Tie into new TDT log.

*****NOTE: Perforation intervals may change after review of the TDT log. Contact Steve Campbell, Hans Dube, or Glen Christiansen for final perforation intervals.**

6. TIH w/ 4-1/2" fullbore pkr and 150 jts. 2-3/8" 4.7# J-55 workstring and set @ +/- **4670'**. RU stimulation company. Pressure test surface lines to **4800** psi. Breakdown perforations @ 5-6 BPM w/ tbg. volume of 2% KCL (approximately 18 BBL). Displace w/ 300 gal. of 10% Acetic Acid + 5% NH₄CL** dropping one-hundred eighty-two (182) 7/8" 1.1 SG RCN balls evenly displaced through acid. Displace acid w/ approximately 26 BBL of 2% KCL to bottom perforation. Balloff to maximum pressure of **3800** psi (80% of burst in 4-1/2" 10.5# csg). Record breakdown pressure, ball action and ISIP. Release pkr and knock ball off of perforations.

** All Acid to contain the following additives/ 1000 gal:

1000 gal	10%	Acetic Acid
2 gal	MSA II	corrosion inhibitor
5%	NH ₄ CL	clay control

7. TOOH w/ 4-1/2" fullbore pkr and approximately 150 jts. 2-3/8" 4.7# J-55 workstring. Stand back workstring and laydown pkr.
8. Pick-up 4-1/2" fullbore Model **Arrowset 1X 10K COMPRESSION SET** pkr, 2 jts. 2-7/8" 6.4# N-80 **BUTTRESS**, 2-7/8" N-80 **BUTTRESS** X 3-1/2" 8rd changeover swage and 122 jts. 3-1/2" 9.3# N-80 fracstring. Set pkr @ +/- **3848'**. (Refer to tubing movement calculation enclosed. This will determine how much shrinkage will occur in tubulars.)
9. RU stimulation company to frac down fracstring and 4" frac valve. Hold pre-job safety meeting with all personnel on location. Pressure test surface lines to **9000** psi prior to stimulation.**

****NOTE: HAVE PRE-JOB SAFETY MEETING WITH ALL PERSONNEL ON LOCATION. USE CO₂ APPROVED PUMPING EQUIPMENT ONLY. REVIEW CONTINGENCY PLANS FOR POSSIBLE JOB MALFUNCTIONS WITH ALL PERSONNEL.**

10. Fracture stimulate in 0.6 to 3.0 ppg stages @ 35 BPM constant downhole rate with 135 tons of Liquid CO₂ and 47,500 lbs. 40/70 mesh sand. When enclosed blender is empty, call flush. Flush to top perf @ +/- **4770'** with Liquid CO₂. Refer to frac schedule enclosed. Maximum bottomhole treating pressure is **3800** psi (80% of burst in 4-1/2" 10.5# csg). Estimated friction pressure is approximately **6460** psi @ 35 BPM. Maximum surface treating pressure is **8000** psi. **Leave csg. valve open and monitor annulus pressure in treating van.**

San Juan 29-7 Unit #76R
Lewis Shale Payadd Procedure
L 18 29N 07W
Rio Arriba County, NM
Latitude: 36 Deg., 43.38 Min
Longitude: 107 Deg., 36.92 Min.

11. Record ISIP, 5, 10 and 15 shut-in pressure. Shut-in frac valve. RD stimulation company. Install flowback line above frac valve. Lay flowback line to dual-choke manifold and pit. Begin flowback after stimulation company has rigged down from frac valve. Open well to pit on accordance to flowback schedule listed in the table below. Do not shut well in during flowback. When schedule dictates a larger choke size, open ball valve upstream of adjustable choke and open adjustable choke on manifold to pre-determined size listed in table and begin flowing through adjustable choke. Close ball valve upstream of positive flow bean and change out flow bean to next larger size in table. Open ball valve upstream of positive flow bean and begin flowing. Close ball valve upstream of adjustable choke and close adjustable choke.

16/64" Choke	From Shut-in to 900 psi
20/64" Choke	From 900 psi to 750 psi
24/64" Choke	From 750 psi to 600 psi
32/64" Choke	From 600 psi to 400 psi
48/64" Choke	From 400 psi to 100 psi

12. After well cleans up and pressures allow, release pkr and TOOH standing back 122 jts. 3-1/2" 9.3# N-80, 3-1/2" 8rd X 2-7/8" N-80 **BUTTRESS** changeover swage and 2 jts. 2-7/8" 6.4# N-80 **BUTTRESS** frac string.

2nd Stage – Upper Lewis Shale

13. TIH w/ 4-1/2" CIBP, on/off tool, 4-1/2" fullbore pkr and approximately 151 jts. 2-3/8" 4.7# J-55 workstring and tubing set CIBP @ +/- **4710'**. Load hole down tubing w/ 14 bbls 2% KCL for perforating. Set pkr @ +/- **3848'**. RU stimulation company. Pressure test surface lines to **4800** psi and pressure test CIBP to **3800** psi (80% of burst of 4-1/2" 10.5# csg). RD stimulation company. Release pkr and TOOH w/ workstring and pkr.
14. RIH w/ CCL on top of perforating guns**. Perforate the Upper Lewis Shale interval with **3-1/2" HPG gun system w/ 37J UJ HMX charges**. These are 34 gram charges with a 0.46" hole and 34.0" penetration. Shoot 130 holes bottom up in two (2) gun runs @ **2 SPF 60° Phase** in 2% KCL at the following depths: **1st gun run** - 10' gun @ **4680'-4670'******, 10' gun @ **4620'-4610'******, 10' gun @ **4555'-4545'******, **2nd gun run** - 10' gun @ **4470'-4460'******, 10' gun @ **4430'-4420'******, 5' gun @ **4400'-4395'******, 10' gun @ **4360'-4350'******. RD wireline company.

** NOTE: Tie into new TDT log.

***NOTE: Perforation intervals may change after review of the TDT log. Contact Steve Campbell, Hans Dube, or Glen Christiansen for final perforation intervals.

15. TIH w/ 4-1/2" fullbore pkr and 137 jts. 2-3/8" 4.7# J-55 workstring and set @ +/- **4250'**. RU stimulation company. Pressure test surface lines to **4800** psi. Breakdown perforations @ 5-6 BPM w/ tbg. volume of 2% KCL (approximately 16 BBL). Displace w/ 300 gal. of 10% Acetic Acid + 5% NH₄CL** dropping one-hundred sixty-nine (169) 7/8" 1.1 SG RCN balls evenly displaced through acid. Displace acid w/ approximately 23 BBL of 2% KCL to bottom perforation. Balloff to maximum pressure of **3800** psi (80% of burst in 4-1/2" 10.5# csg). Record breakdown pressure, ball action and ISIP. Release pkr and knock ball off of perforations.

San Juan 29-7 Unit #76R
Lewis Shale Payadd Procedure
L 18 29N 07W
Rio Arriba County, NM
Latitude: 36 Deg., 43.38 Min
Longitude: 107 Deg., 36.92 Min.

** All Acid to contain the following additives/ 1000 gal:

1000 gal	10%	Acetic Acid
2 gal	MSA II	corrosion inhibitor
5%	NH ₄ CL	clay control

16. TOOH w/ 4-1/2" fullbore pkr and approximately 137 jts. 2-3/8" 4.7# J-55 workstring. Stand back workstring and laydown pkr.
17. Pick-up 4-1/2" fullbore Model **Arrowset 1X 10K COMPRESSION SET** pkr, 2 jts. 2-7/8" 6.4# N-80 **BUTTRESS**, 2-7/8" N-80 **BUTTRESS X** 3-1/2" 8rd changeover swage and 122 jts. 3-1/2" 9.3# N-80 fracstring. Set pkr @ +/- **3848'**. (Refer to tubing movement calculation enclosed. This will determine how much shrinkage will occur in tubulars.)
18. RU stimulation company to frac down fracstring and 4" frac valve. Hold pre-job safety meeting with all personnel on location. Pressure test surface lines to **9000** psi prior to stimulation.**

****NOTE: HAVE PRE-JOB SAFETY MEETING WITH ALL PERSONNEL ON LOCATION. USE CO₂ APPROVED PUMPING EQUIPMENT ONLY. REVIEW CONTINGENCY PLANS FOR POSSIBLE JOB MALFUNCTIONS WITH ALL PERSONNEL.**

19. Fracture stimulate in 0.6 to 3.0 ppg stages @ 35 BPM constant downhole rate with 133 tons of Liquid CO₂ and 47,500 lbs. 40/70 mesh sand. When enclosed blender is empty, call flush. Flush to top perf @ +/- **4350'** with Liquid CO₂. Refer to frac schedule enclosed. Maximum bottomhole treating pressure is **3800** psi (80% of burst in 4-1/2" 10.5# csg). Estimated friction pressure is approximately **6357** psi @ **35** BPM. Maximum surface treating pressure is **8000** psi. **Leave csg. valve open and monitor annulus pressure in treating van.**
20. Record ISIP, 5, 10 and 15 shut-in pressure. Shut-in frac valve. RD stimulation company. Install flowback line above frac valve. Lay flowback line to dual-choke manifold and pit. Begin flowback after stimulation company has rigged down from frac valve. Open well to pit on accordance to flowback schedule listed in the table below. Do not shut well in during flowback. When schedule dictates a larger choke size, open ball valve upstream of adjustable choke and open adjustable choke on manifold to pre-determined size listed in table and begin flowing through adjustable choke. Close ball valve upstream of positive flow bean and change out flow bean to next larger size in table. Open ball valve upstream of positive flow bean and begin flowing. Close ball valve upstream of adjustable choke and close adjustable choke.

16/64" Choke	From Shut-in to 900 psi
20/64" Choke	From 900 psi to 750 psi
24/64" Choke	From 750 psi to 600 psi
32/64" Choke	From 600 psi to 400 psi
48/64" Choke	From 400 psi to 100 psi

21. After well cleans up and pressures allow, release pkr and TOOH laying down 122 jts. 3-1/2" 9.3# N-80, 3-1/2" 8rd X 2-7/8" N-80 **BUTTRESS** changeover swage and 2 jts. 2-7/8" 6.4# N-80 **BUTTRESS** frac string.
22. TIH w/ 3-7/8" flat mill on 2-3/8" 4.7# J-55 workstring and clean-up to CIBP @ +/- **4710'** with air/mist. When well is sufficiently clean, gauge the Upper Lewis interval for one (1) hour. Obtain an accurate pitot gauge for the Upper Lewis interval.

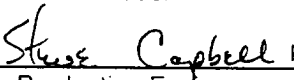
San Juan 29-7 Unit #76R
Lewis Shale Payadd Procedure
L 18 29N 07W
Rio Arriba County, NM
Latitude: 36 Deg., 43.38 Min
Longitude: 107 Deg., 36.92 Min.

23. Drill out CIBP @ +/- 4710' w/ 3-7/8" flat mill on 2-3/8" workstring. Use minimum mist rate of 10-12 BPH.
24. Clean up to CIBP @ +/- 5200' w/ air/mist. When well is sufficiently clean, gauge the entire Lewis interval for one (1) hour.
25. Drill out CIBP @ +/- 5200' w/ 3-7/8" flat mill on 2-3/8" workstring w/ air/mist and CO to PBTD @ 6025'. TOOH w/ 2-3/8" 4.7# J-55 workstring and stand back. Lay down 3-7/8" flat mill.

****NOTE:** If tbq. was scaled-up, acid wash the existing Cliffhouse and Point Lookout perforations w/ treatment specified by service company.
26. Broach in tubing on sandline. TIH w/ one joint of 2-3/8" 4.7# J-55 tubing w/ expendable check, seating nipple, then remaining 2-3/8" production tubing. Land tubing @ 5814'.
27. ND BOP's, NU single tubing hanger wellhead. Pump off expendable check. Obtain a final pitot up tubing. If well will not flow on it's own, make swab run to seating nipple. If swab run is not necessary, RD and MOL.

Approve:  1/19/99
Team Leader

Approve:  2/13/99
Drilling Superintendent

Recommend:  1/13/99
Production Engineer

VENDORS:

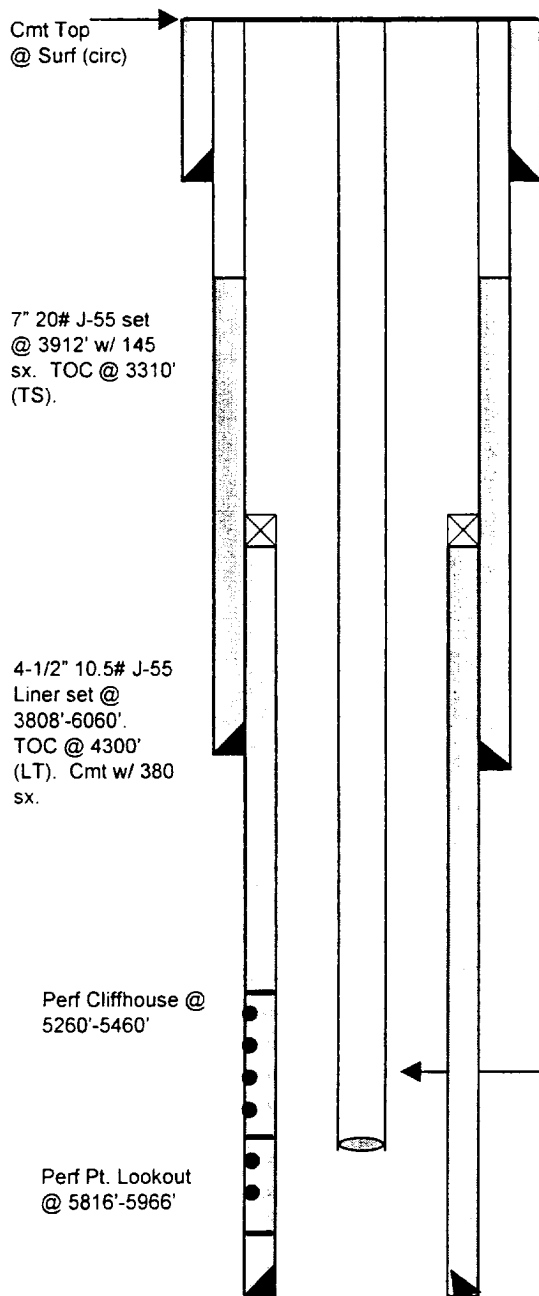
Wireline:	Schlumberger	325-5006
Stimulation:	Halliburton	324-3500
Enclosed Blender:	Universal Resources	1-800-935-2837
Liquid CO ₂ :	BOC Gases	1-800-448-5988
Packer:	Arrow Completion Systems	326-5141
Bridge Plug:	Arrow Completion Systems	326-5141
Flat Mill:	Arrow Completion Systems	326-5141

Steve Campbell	Home 325-8218	Office 326-9546	Pager 564-1902
Glen Christiansen	Home 327-5089	Office 326-9733	Pager 324-7562
Hans Dube	Home 564-9401	Office 326-9555	

San Juan 29-7 Unit #76R

Unit L, Section 18, T29N, R07W
Rio Arriba County, NM

Current Schematic



9-5/8" Csg.
Set at 146'.
Cmt'd with
100 sx.

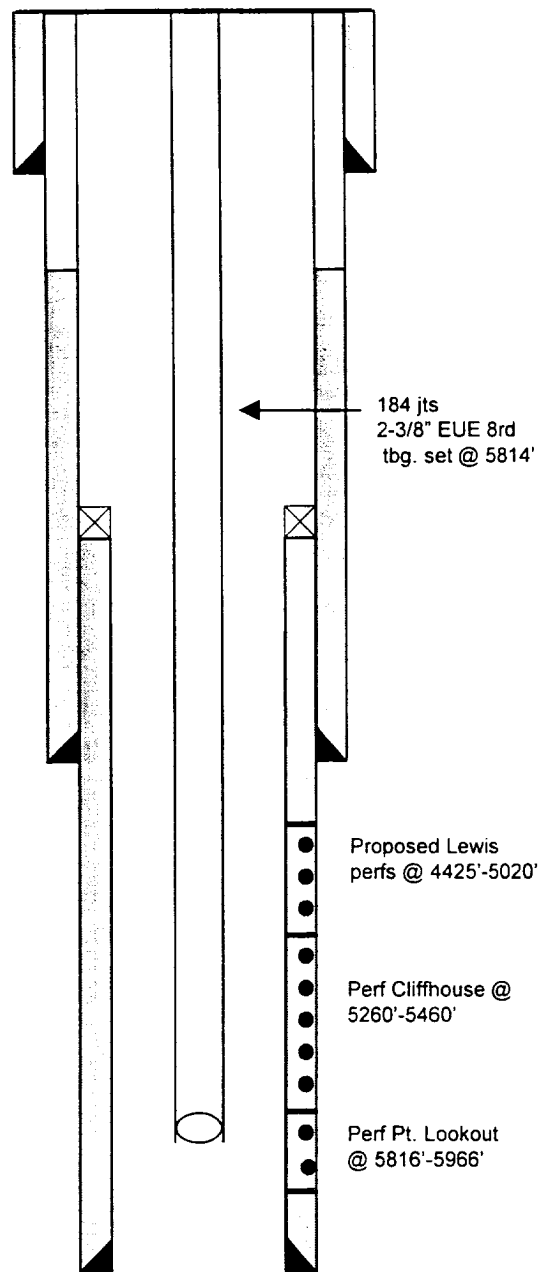
Formation Tops at:

Ojo Alamo	N/A
Pictured Cliffs	3623'
H. Bentonite	4270'
Cliffhouse	5259'
Menefee	5495'
Pt. Lookout	5805'

189 JTS. 2-3/8" EUE 8rd
Tbg. Set at 5973'.

PBTD @ 6025'
TD @ 6060'

Proposed Schematic



PBTD @ 6025'
TD @ 6060'