

Form 9-331C  
(May 1963)SUBMIT IN TRIPLICATE\*  
(Other instructions on  
reverse side)Form approved.  
Budget Bureau No. 42-R1425.UNITED STATES  
DEPARTMENT OF THE INTERIOR  
GEOLOGICAL SURVEY

## APPLICATION FOR PERMIT TO DRILL, DEEPEN, OR PLUG BACK

## 1a. TYPE OF WORK

DRILL ☒DEEPEN ☐PLUG BACK ☐

## b. TYPE OF WELL

OIL  
WELL ☐GAS  
WELL ☒

OTHER

SINGLE  
ZONE ☐MULTIPLE  
ZONE ☐

## 2. NAME OF OPERATOR

Lively Exploration Company

## 3. ADDRESS OF OPERATOR

Box 234, Farmington, New Mexico 87401

## 4. LOCATION OF WELL (Report location clearly and in accordance with any State requirements.)\*

At surface

790' FSL - 1770' FEL

At proposed prod. zone

## 14. DISTANCE IN MILES AND DIRECTION FROM NEAREST TOWN OR POST OFFICE\*

11 miles east Blanco, New Mexico

## 15. DISTANCE FROM PROPOSED\*

LOCATION TO NEAREST

PROPERTY OR LEASE LINE, FT.

(Also to nearest drig. unit line, if any)

790'

## 16. NO. OF ACRES IN LEASE

## 18. DISTANCE FROM PROPOSED LOCATION\*

TO NEAREST WELL, DRILLING, COMPLETED,  
OR APPLIED FOR, ON THIS LEASE, FT.

2600' approx.

## 19. PROPOSED DEPTH

7500'

## 21. ELEVATIONS (Show whether DF, RT, GR, etc.)

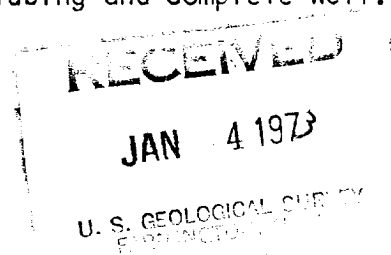
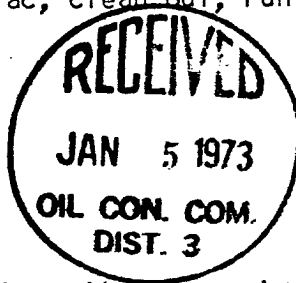
6290' GR

## 23.

## PROPOSED CASING AND CEMENTING PROGRAM

SIZE OF HOLE	SIZE OF CASING	WEIGHT PER FOOT	SETTING DEPTH	QUANTITY OF CEMENT
13 3/4	9 5/8	32.30	300	200 cu. ft.
8 3/4	7	20	3300	600 cu. ft.
6 1/4	4 1/2	10.5	7500	600 cu. ft.

Plan to drill with water or minimum mud to 3300', set 7" intermediate casing and cement with 600 cu. ft. cement. Drill 6 1/4" hole with gas to T.D. to test Dakota formation. Run 4 1/2" production casing thru Dakota, selectively perforate and sand water frac, clean out, run 1 1/4" tubing and complete well.



IN ABOVE SPACE DESCRIBE PROPOSED PROGRAM: If proposal is to deepen or plug back, give data on present productive zone and proposed new productive zone. If proposal is to drill or deepen directionally, give pertinent data on subsurface locations and measured and true vertical depths. Give blowout preventer program, if any.

24.

Original signed by T. A. Dugan

SIGNED

TITLE

Engineer

DATE

1-2-73

(This space for Federal or State office use)

PERMIT NO.

APPROVAL DATE

APPROVED BY

TITLE

DATE

CONDITIONS OF APPROVAL, IF ANY:

\*See Instructions On Reverse Side

**NEW MEXICO OIL CONSERVATION COMMISSION  
WELL LOCATION AND ACREAGE DEDICATION PLAT**

Form C-102  
Supersedes C-128  
Effective 1-1-65

All distances must be from the outer boundaries of the Section

Operator <b>Lively Exploration Company</b>			Lease <b>SF 078596</b>		Lively		Well No. <b>9</b>
Unit Letter <b>0</b>	Section <b>3</b>	Township <b>29 North</b>	Range <b>8 West</b>	County <b>San Juan</b>			
Actual Footage Location of Wells <div style="display: flex; justify-content: space-between;"> <span>790 feet from the <b>South</b> line and</span> <span>1770 feet from the <b>East</b> line</span> </div>							
Ground Level Elev. <b>6290</b>	Producing Formation <b>Dakota</b>		Pool <b>Basin Dakota</b>			Dedicated Acreage: <b>323.20</b> Acres	

1. Outline the acreage dedicated to the subject well by colored pencil or hatchure marks on the plat below.
2. If more than one lease is dedicated to the well, outline each and identify the ownership thereof (both as to working interest and royalty).
3. If more than one lease of different ownership is dedicated to the well, have the interests of all owners been consolidated by communitization, unitization, force-pooling, etc?

☐ Yes   ☐ No   If answer is "yes," type of consolidation \_\_\_\_\_

If answer is "no," list the owners and tract descriptions which have actually been consolidated. (Use reverse side of this form if necessary.) \_\_\_\_\_

No allowable will be assigned to the well until all interests have been consolidated (by communitization, unitization, forced-pooling, or otherwise) or until a non-standard unit, eliminating such interests, has been approved by the Commission.

**CERTIFICATION**

*I hereby certify that the information contained herein is true and complete to the best of my knowledge and belief.*

Original signed by **T. A. Dugan**

Name
<b>Thomas A. Dugan</b>
Position
<b>Engineer</b>
Company
<b>Lively Exploration Co.</b>
Date
<b>1-2-73</b>

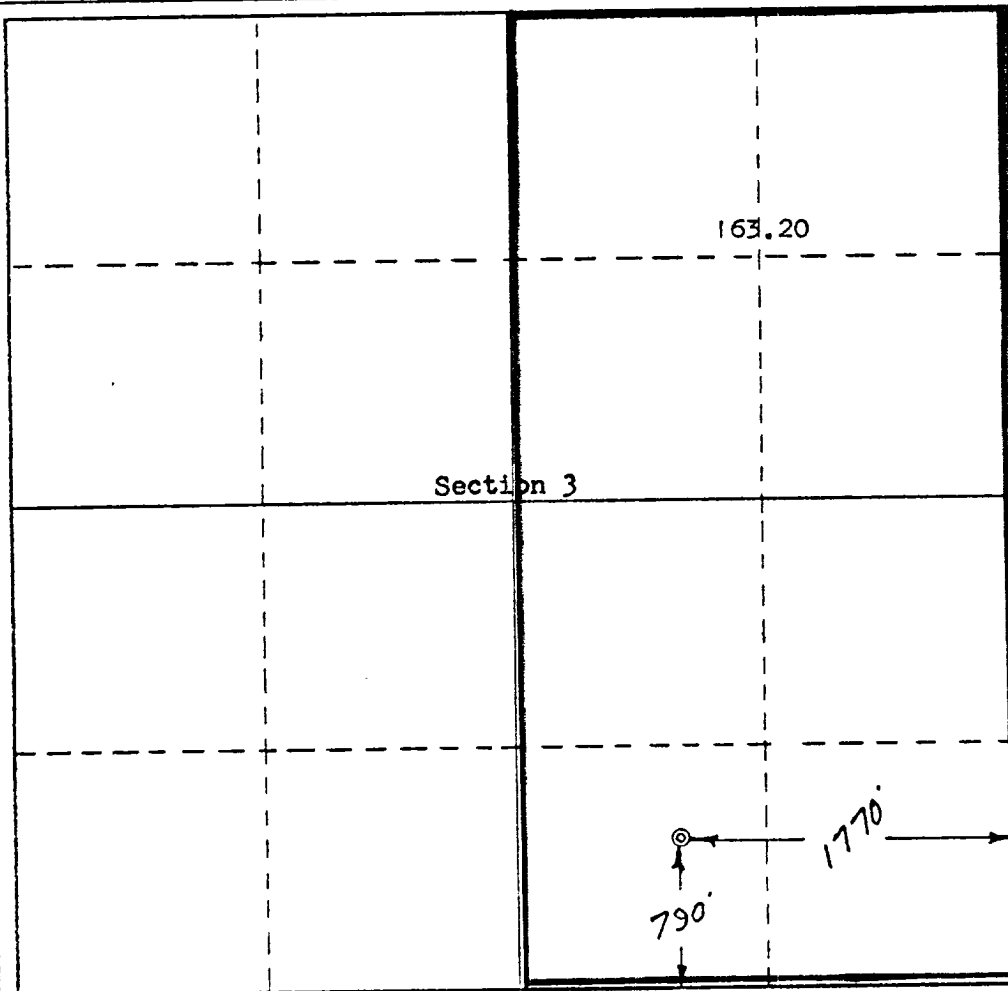
*I hereby certify that the well location shown on this plat was plotted from field notes of actual surveys made by me or under my supervision, and that the same is true and correct to the best of my knowledge and belief.*

Date Surveyed  
**December 21, 1972**

Registered Professional Engineer  
and Land Surveyor

Certificate No.

**3084**



0 330 660 990 1320 1650 1980 2310 2640 2970 3300 3630 3960 4290 4620 4950 5280 5610 5940 6270 6600