

UNITED STATES
DEPARTMENT OF THE INTERIOR
GEOLOGICAL SURVEY

APPLICATION FOR PERMIT TO DRILL, DEEPEN, OR PLUG BACK

1a. TYPE OF WORK
DRILL ☒ DEEPEN ☐ PLUG BACK ☐

b. TYPE OF WELL
OIL WELL ☐ GAS WELL ☒ OTHER ☐
SINGLE ZONE ☐ MULTIPLE ZONE ☐

2. NAME OF OPERATOR
Aztec Oil & Gas Company

3. ADDRESS OF OPERATOR
P. O. Drawer 570, Farmington, New Mexico 87401

4. LOCATION OF WELL (Report location clearly and in accordance with any State requirements.*)
At surface 1710' FNL & 1730' FWL
At proposed prod. zone

14. DISTANCE IN MILES AND DIRECTION FROM NEAREST TOWN OR POST OFFICE*

15. DISTANCE FROM PROPOSED*
LOCATION TO NEAREST
PROPERTY OR LEASE LINE, FT.
(Also to nearest drilg. unit line, if any)

16. NO. OF ACRES IN LEASE
320

17. NO. OF ACRES ASSIGNED
TO THIS WELL

18. DISTANCE FROM PROPOSED LOCATION*
TO NEAREST WELL, DRILLING, COMPLETED,
OR APPLIED FOR, ON THIS LEASE, FT.

19. PROPOSED DEPTH
5600'

20. ROTARY OR CABLE TOOLS

Rotary Tools

21. ELEVATIONS (Show whether DF, RT, GR, etc.)
6416 GR

22. APPROX. DATE WORK WELL START*

23. PROPOSED CASING AND CEMENTING PROGRAM

SIZE OF HOLE	SIZE OF CASING	WEIGHT PER FOOT	SETTING DEPTH	QUANTITY OF CEMENT
12-1/4"	9-5/8"	32.30#	300'	Circulate
8-3/4"	7"	23#	3350'	250 Sacks
6-1/4"	4-1/2"	10.50#	3250'-5600'	300 Sacks
	1-1/2"	2.90#	5550'	

PROPOSE TO:

Drill 12-1/4" Hole. Set 9-5/8" Casing At 300'. Circulate Cement To Surface.
Drill 8-3/4" Hole. Set 7" At 3350'. Cement With 250 Sacks.
Drill 6-1/4" Hole To Approximately 5600'.
Run 4-1/2" Liner From 3250' To 5600'. Cement With 300 Sacks.
Perforate & Sand Water Frac Mesaverde Formation.
Run 1 1/2" Tubing To 5550'.
Install Well Head.

RECEIVED

OCT 23 1975

U. S. GEOLOGICAL SURVEY
FARMINGTON, N. M.

IN ABOVE SPACE DESCRIBE PROPOSED PROGRAM: If proposal is to deepen or plug back, give data on present productive zone and proposed new productive zone. If proposal is to drill or deepen directionally, give pertinent data on subsurface locations and measured and true vertical depths. Give blowout preventer program, if any.

24. SIGNED Jac C. Dumas TITLE District Superintendent DATE October 17, 1975

(This space for Federal or State office use)

PERMIT NO. _____ APPROVAL DATE _____

APPROVED BY _____ TITLE _____ DATE _____

CONDITIONS OF APPROVAL, IF ANY:

Okal

*See Instructions On Reverse Side

**NEW MEXICO OIL CONSERVATION COMMISSION
WELL LOCATION AND ACREAGE DEDICATION PLAT**

Form C-102
Supersedes C-128
Effective 1-1-65

All distances must be from the outer boundaries of the Section.

Operator Aztec Oil & Gas Company			Lease H111		Well No. 1A
Unit Letter F	Section 4	Township 29N	Range 8W	County San Juan	
Actual Footage Location of Well: 1710 feet from the North line and 1730 feet from the West line NW 1/4-161					
Ground Level Elev. 6416	Producing Formation Mesaverde	Pool Blanco		Dedicated Acreage: 324.46 Acres	

1. Outline the acreage dedicated to the subject well by colored pencil or hachure marks on the plat below.
2. If more than one lease is dedicated to the well, outline each and identify the ownership thereof (both as to working interest and royalty).
3. If more than one lease of different ownership is dedicated to the well, have the interests of all owners been consolidated by communitization, unitization, force-pooling, etc?

☐ Yes ☐ No If answer is "yes," type of consolidation _____

If answer is "no," list the owners and tract descriptions which have actually been consolidated. (Use reverse side of this form if necessary.) _____

No allowable will be assigned to the well until all interests have been consolidated (by communitization, unitization, forced-pooling, or otherwise) or until a non-standard unit, eliminating such interests, has been approved by the Commission.

CERTIFICATION

I hereby certify that the information contained herein is true and complete to the best of my knowledge and belief.

Joe C. Salmon
Name

Joe C. Salmon

Position
District Superintendent

Company
Aztec Oil & Gas Company

Date
October 17, 1975

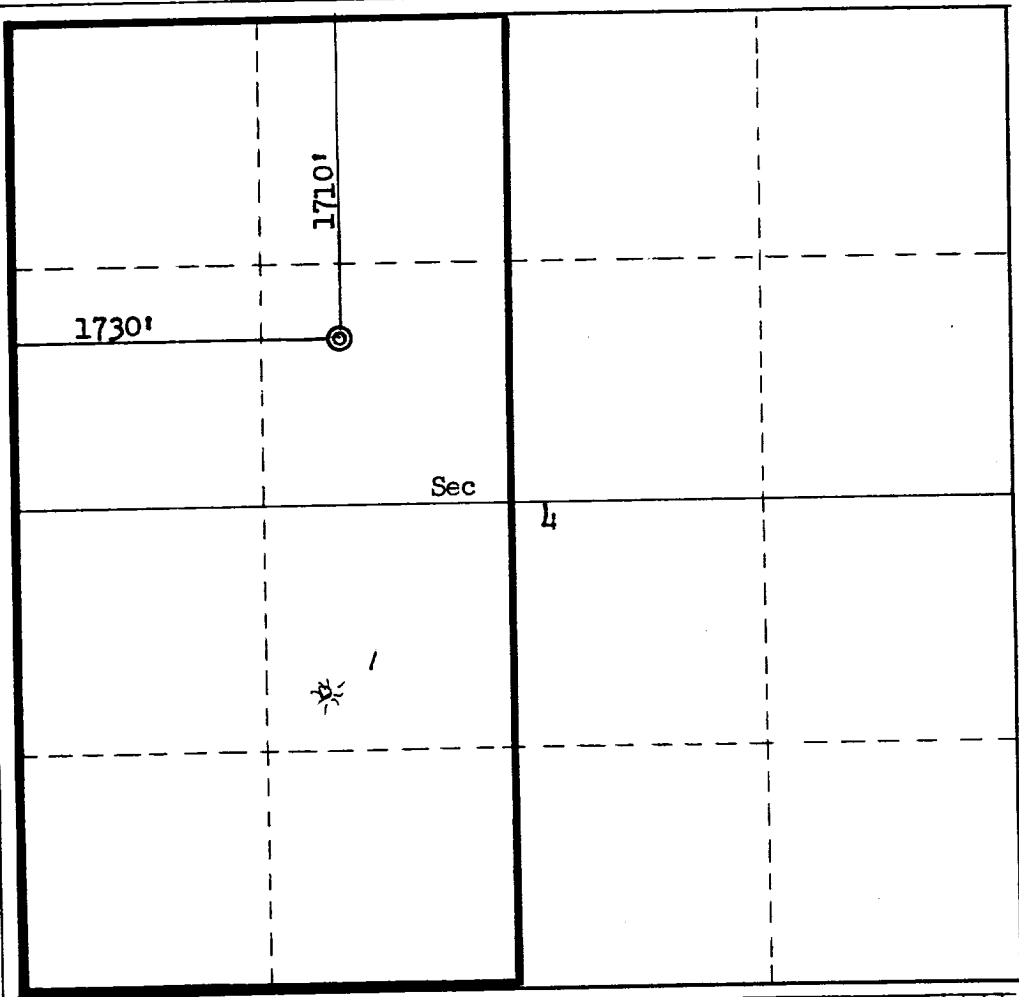
I hereby certify that the well location shown on this plat was plotted from field notes of actual surveys made by me or under my supervision, and that the same is true and correct to the best of my knowledge and belief.

Date Surveyed
October 2, 1975

Registered Professional Engineer and/or Land Surveyor

Fred B. Kerr Jr.
Fred B. Kerr Jr.

Certificate No.
3950



AZTEC OIL & GAS COMPANY

P.O. DRAWER 570
FARMINGTON, NEW MEXICO 87401

October 17, 1975

United States Geological Survey
P. O. Box 959
Farmington, New Mexico

Attention: Mr. P. T. McGrath

Dear Sir:


Enclosed please find map showing existing roads and planned access roads to Aztec Oil & Gas Company's Hill #1-A well. The locations of tank batteries and flow lines will be on location with well.

There will be no camps or air strips.

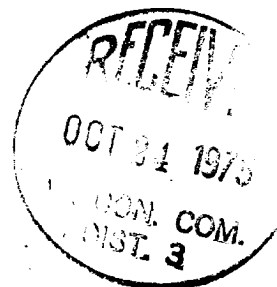
Also enclosed is location layout showing approximate location of rig, pits and pipe rights.

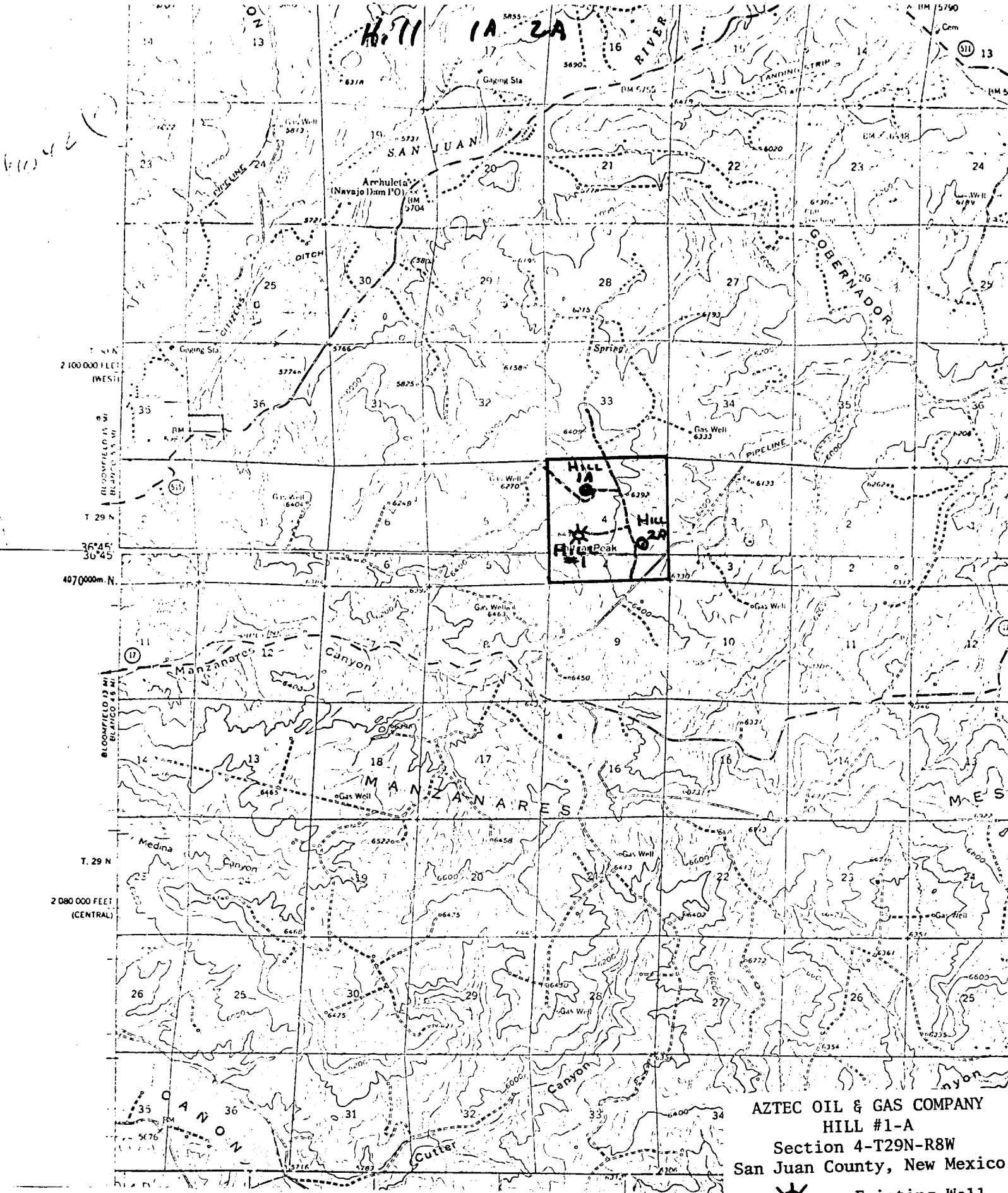
Water supply will be San Juan River.

In the event of a dry hole, location will be graded and reseeded according to Bureau of Land Management standards.






Joe C. Salmon
District Superintendent

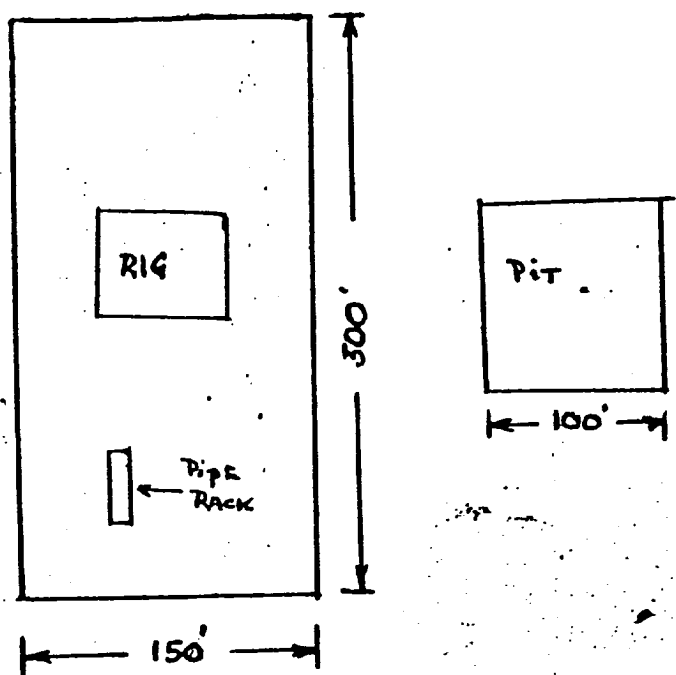
JCS/dg



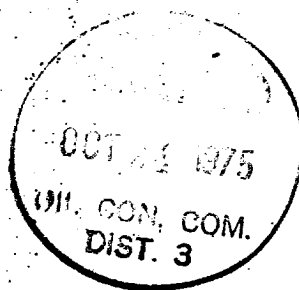


AZTEC OIL & GAS COMPANY
HILL #1-A
Section 4-T29N-R8W
San Juan County, New Mexico

-  Existing Well
-  Proposed Well
-  Existing Road
-  Proposed Road



LOCATION LAYOUT



AZTEC OIL & GAS COMPANY

P. O. DRAWER 570
FARMINGTON, NEW MEXICO 87401

October 17, 1975

United States Geological Survey
P. O. Box 959
Farmington, New Mexico

Attention: Mr. P. T. McGrath

RE: Blowout Preventer Plan

Dear Sir:

All drilling and completion wells will be equipped with 8" Shaffer LWP double hydraulic blowout preventers and a 2000 "C" Payne Hydraulic closing unit with steel line.

The preventer is 3000# working pressure and 6000# test.

All crews will be thoroughly trained in the operation of this preventer. The preventer will be tested at the beginning of every tower change to insure proper operation.


Joe C. Salmon
District Superintendent

JCS/dg

