

UNITED STATES
DEPARTMENT OF THE INTERIORGEOLOGICAL SURVEY *API 30-045-22116*

APPLICATION FOR PERMIT TO DRILL, DEEPEN, OR PLUG BACK

1a. TYPE OF WORK

DRILL ☒DEEPEN ☐PLUG BACK ☐

b. TYPE OF WELL

OIL
WELL ☐GAS
WELL ☒

OTHER

SINGLE
ZONE ☐MULTIPLE
ZONE ☐

2. NAME OF OPERATOR

Tenneco Oil Company

3. ADDRESS OF OPERATOR

1360 Lincoln St., Suite 1200, Denver, Colorado 80203

4. LOCATION OF WELL (Report location clearly and in accordance with any State requirements.)*

At surface

1595' FSL and 1160' FEL

At proposed prod. zone

14. DISTANCE IN MILES AND DIRECTION FROM NEAREST TOWN OR POST OFFICE*

15. DISTANCE FROM PROPOSED*

LOCATION TO NEAREST
PROPERTY OR LEASE LINE, FT.
(Also to nearest drlg. unit line, if any)

16. NO. OF ACRES IN LEASE

320

18. DISTANCE FROM PROPOSED LOCATION*

TO NEAREST WELL, DRILLING, COMPLETED,
OR APPLIED FOR, ON THIS LEASE, FT.

19. PROPOSED DEPTH

+5580'

21. ELEVATIONS (Show whether DF, RT, GR, etc.)

6342' GL

5. LEASE DESIGNATION AND SERIAL NO.

SF-078596-A

6. IF INDIAN, ALLOTTEE OR TRIBE NAME

7. UNIT AGREEMENT NAME

8. FARM OR LEASE NAME

Florance

9. WELL NO.

31-A

10. FIELD AND POOL, OR WILDCAT

Blanco Mesa Verde

11. SEC., T., R., M., OR B.L.K.
AND SURVEY OR AREA

I- Sec. 12, T29N, R8W

12. COUNTY OR PARISH

San Juan

13. STATE

New Mexico

15. DISTANCE FROM PROPOSED*

LOCATION TO NEAREST
PROPERTY OR LEASE LINE, FT.
(Also to nearest drlg. unit line, if any)

16. NO. OF ACRES IN LEASE

320

18. DISTANCE FROM PROPOSED LOCATION*

TO NEAREST WELL, DRILLING, COMPLETED,
OR APPLIED FOR, ON THIS LEASE, FT.

19. PROPOSED DEPTH

+5580'

21. ELEVATIONS (Show whether DF, RT, GR, etc.)

6342' GL

22. APPROX. DATE WORK WILL START*

upon approval

23.

PROPOSED CASING AND CEMENTING PROGRAM

| SIZE OF HOLE | SIZE OF CASING | WEIGHT PER FOOT | SETTING DEPTH | QUANTITY OF CEMENT |
|--------------|----------------|-----------------|---------------|---------------------------------|
| 12 1/4" | 9 5/8" | 36# | +200' | Suff. to circulate to surface. |
| 8 3/4" | 7" | 23# | +3305' | Suff. to cement back to surface |
| 6 1/8" | 4 1/2" | 10.5# | +3055-5580' | Suff. to cement back to 7" csg. |

Plan to drill well as follows:

1. MIRURT, drill 12 1/4" hole to +200'.
2. Set and cement 9 5/8" casing to + 200' & cement with suff. cement to circ. to surface
3. Drill out with 8 3/4" bit to + 3305 feet.
4. Run 7" casing and cement back to surface casing.
5. Drill out of 7" using gas as the circulating fluid, do not drill more than 10' below the 7" casing shoe until the hole has dried up completely and is dusting.
6. Drill the hole to T.D., log the hole dry as requested by drillsite geologist.
7. Run 4 1/2" liner to T.D., load hole with mud and cement liner back to top of 4 1/2". Set liner hanger and POH w/drill pipe.
8. This well will be completed through casing perforations and stimulated as necessary to establish commercial production.
9. Clean up area.

Gas is dedicated

IN ABOVE SPACE DESCRIBE PROPOSED PROGRAM: If proposal is to deepen or plug back, give data on present productive zone and proposed new productive zone. If proposal is to drill or deepen directionally, give pertinent data on subsurface locations and measured and true vertical depths. Give blowout preventer program, if any.

24.

SIGNED

D.D. Myers

TITLE

Div. Prod. Manager

DATE

6-14-76

(This space for Federal or State office use)

PERMIT NO.

APPROVAL DATE

APPROVED BY

TITLE

DATE

CONDITIONS OF APPROVAL, IF ANY:

*OK*JUN 16 1976
U. S. GEOLOGICAL SURVEY

*See Instructions On Reverse Side

**NEW MEXICO OIL CONSERVATION COMMISSION
WELL LOCATION AND ACERAGE DEDICATION PLAT**

All distances must be from the outer boundaries of the Section

| | | | | | |
|--|--|-----------------------------|---------------------------------|--|--------------------------|
| Operator TENNECO OIL COMPANY | | | Lease FLORANCE | | Well No. 31- A |
| Unit Letter I | Section 12 | Township 29 NORTH | Range 8 WEST | County SAN JUAN | |
| Actual Footage Location of Well: 1595 feet from the SOUTH line and 1160 feet from the EAST line | | | | | |
| Ground Level Elev. 6342 | Producing Formation Blanco Mesaverde | | Pool Blanco Mesaverde | Dedicated Acreage: 320 EL2 | |

1. Outline the acreage dedicated to the subject well by colored pencil or hachure marks on the plat below.
2. If more than one lease is dedicated to the well, outline each and identify the ownership thereof (both as to working interest and royalty),
3. If more than one lease of different ownership is dedicated to the well, have the interests of all owners been consolidated by communitization, unitization, force-pooling, etc?
 () Yes () No If answer is "yes," type of consolidation _____

If answer is "no," list the owners and tract descriptions which have actually consolidated. (Use reverse side of this form if necessary.) _____

No allowable will be assigned to the well until all interests have been consolidated (by communitization, unitization, forced-pooling, or otherwise) or until a non standard unit, eliminating such interests, has been approved by the Commission.

CERTIFICATION

I hereby certify that the information contained herein is true and complete to the best of my knowledge and belief.

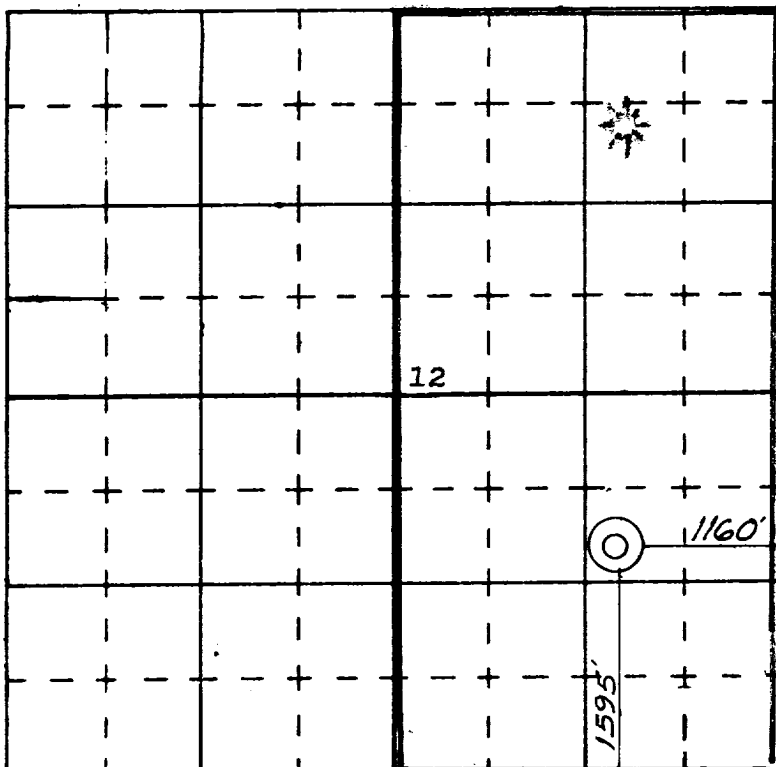
Name *Tom J. Drake*
 Position Production Clerk
 Company Tenneco Oil Company
 Date June 14, 1976

I hereby certify that the well location shown on this plat was plotted from field notes of actual surveys made by me or under my supervision, and that the same is true and correct to the best of my knowledge and belief.

Date Surveyed 4 June 1976
James P. Leese
 Registered Professional Engineer
 and/or Land Surveyor **James P. Leese**

1463

Certificate No.



Florance 31A
SURFACE USE PLAN

1. Shown on attached map.
2. Shown on attached map. Approximately 300' of 14' wide road will be required.
3. Shown on attached map.
4. Shown on attached map.
5. This is expected to be a dry gas well, therefore, a tank battery will not be required.
6. Water will be hauled from the San Juan River or nearest wash.
7. All waste material will be buried in reserve pit at time of location clean up.
8. No camps will be associated with this operation.
9. No airstrip will be built for this operation.
10. Shown on attached diagram.
11. Upon completion or abandonment of this well, the location will be cleaned and levelled and a dry hole marker placed, if applicable.
12. The location is sandy, rocky, typical for the area. Vegetation is sage brush.

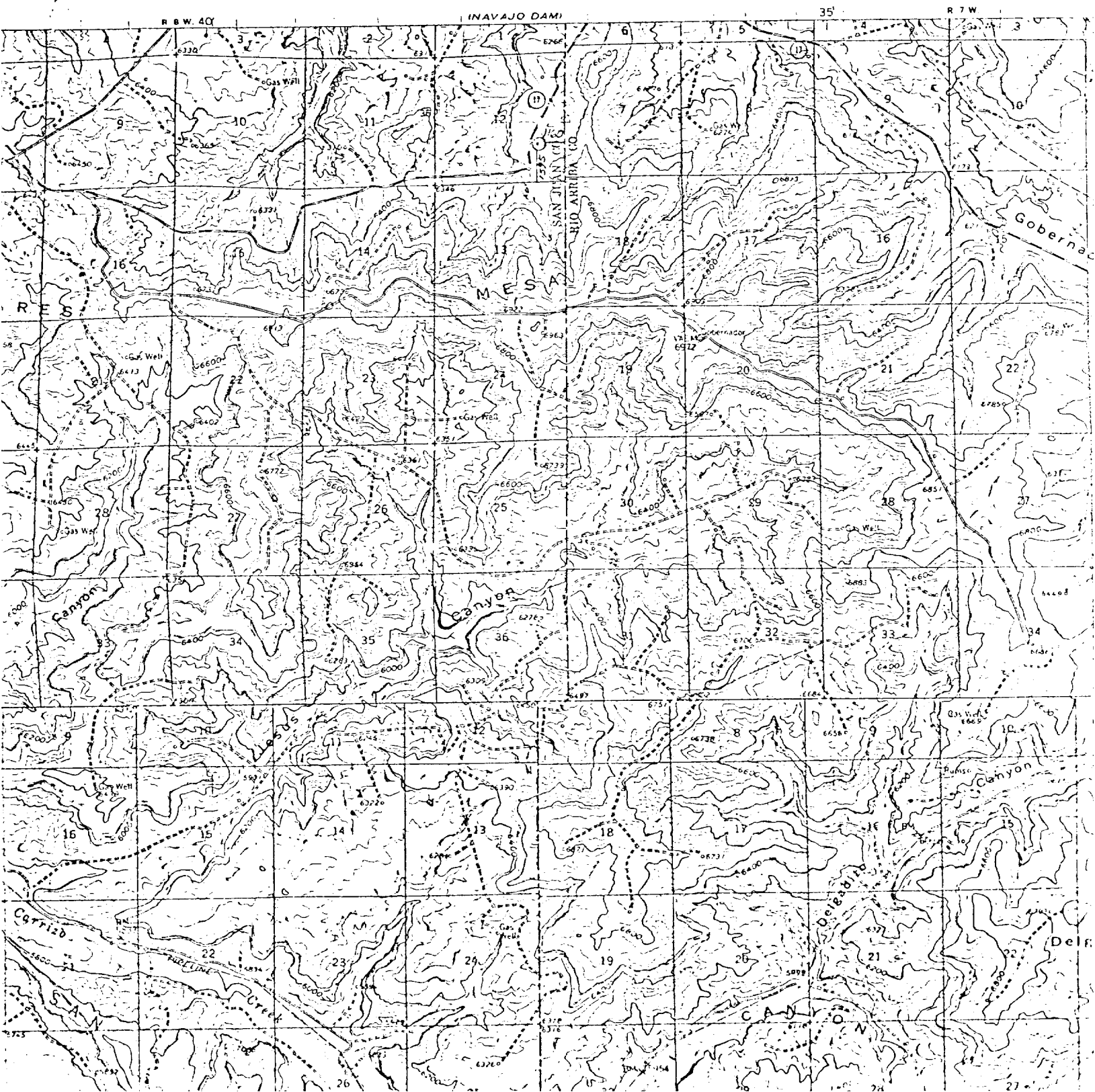
Florance 31A

7 POINT WELL CONTROL PLAN

1. Surface casing: 9 5/8", 24#, approximately 200, grade K-55, new condition.
2. Casinghead will be 10", 900 Series, 3,000 psi rating.
3. Intermediate casing - 7", 20#, K-55, will be set at \pm 3305' and cemented to surface casing.
4. Blowout preventors: Hydraulic, double ram, 10". One set of rams will be provided for each size drill pipe in the hole. One set of blind rams at all times. Fill line will be 2", kill line will be 2", choke relief line will be 2" with variable choke.
5. Auxiliary equipment:
 - (1) Kelly cock will be in use at all times.
 - (2) Stabbing valve to fit drill pipe will be present on floor at all times.
 - (3) Mud monitoring will be visual, no abnormal pressures are anticipated in this area.
 - (4) Rotating head will be used when drilling with gas.
6. Anticipated bottom-hole pressure:

This is an area of known pressure. Maximum anticipated pressure at 5700' T.D. is 1200 psi.
7. Drilling Fluids:

| | |
|-------------|---|
| 0 - 200' | Spud mud |
| 200- 3305' | Gel water - low solids as needed to maintain good conditions. |
| 3305'- T.D. | Compressed gas |



Rig Layout- Florence 3LA .

