

UNITED STATES
DEPARTMENT OF THE INTERIOR
GEOLOGICAL SURVEY

APPLICATION FOR PERMIT TO DRILL, DEEPEN, OR PLUG BACK

1a. TYPE OF WORK DRILL <input checked="" type="checkbox"/> DEEPEN <input type="checkbox"/> PLUG BACK <input type="checkbox"/>		5. LEASE DESIGNATION AND SERIAL NO. SF079938	
b. TYPE OF WELL OIL WELL <input type="checkbox"/> GAS WELL <input checked="" type="checkbox"/> OTHER <input type="checkbox"/>		6. IF INDIAN, ALLOTTEE OR TRIBE NAME	
2. NAME OF OPERATOR Tenneco Oil Company		7. UNIT AGREEMENT NAME	
8. ADDRESS OF OPERATOR 720 South Colorado Blvd., Denver, Colorado 80222		8. FARM OR LEASE NAME Jones Com	
4. LOCATION OF WELL (Report location clearly and in accordance with any State requirements.)* At surface 1580 FSL, 1250 FWL At proposed prod. zone		9. WELL NO. 4	
14. DISTANCE IN MILES AND DIRECTION FROM NEAREST TOWN OR POST OFFICE* 6 miles east, southeast of Blanco, N.M.		10. FIELD AND POOL OR WILDCAT Basin Dakota	
15. DISTANCE FROM PROPOSED* LOCATION TO NEAREST PROPERTY OR LEASE LINE, FT. (Also to nearest drlg. unit line, if any)		11. SEC., T., R., N., OR BLK. AND SURVEY OR AREA Sec. 30, T29N, R8W	
16. NO. OF ACRES IN LEASE 937.20		12. COUNTY OR PARISH San Juan	
17. NO. OF ACRES ASSIGNED TO THIS WELL 374.81		13. STATE N.M.	
18. DISTANCE FROM PROPOSED LOCATION* TO NEAREST WELL, DRILLING, COMPLETED, OR APPLIED FOR, ON THIS LEASE, FT. 6977		20. ROTARY OR CABLE TOOLS Rotary	
21. ELEVATIONS (Show whether DF, RT, GR, etc.) 6458 GR		22. APPROX. DATE WORK WILL START* A.S.A.P.	

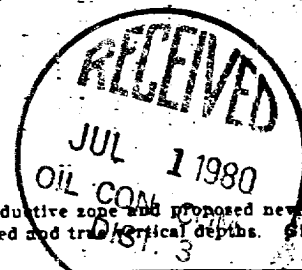
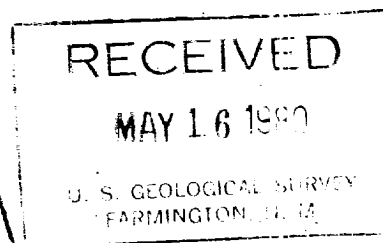
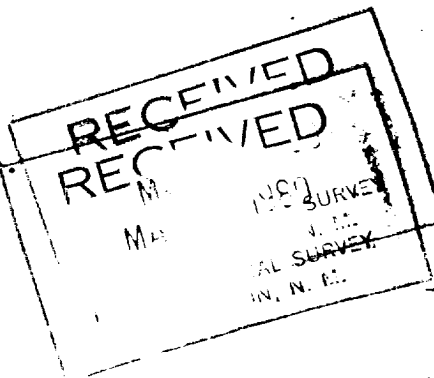
23. PROPOSED CASING AND CEMENTING PROGRAM

SIZE OF HOLE	SIZE OF CASING	WEIGHT PER FOOT	SETTING DEPTH	QUANTITY OF CEMENT
13 3/4"	9 5/8" new	36#	-300'	Circulate to surface
8 3/4"	7 " new	23#	-3000'	Circulate to surface
6 1/4"	4 1/2" new	105#	-6977'	Circulate to liner top

See attached

The surface formation is the San Jose.

The gas is dedicated.

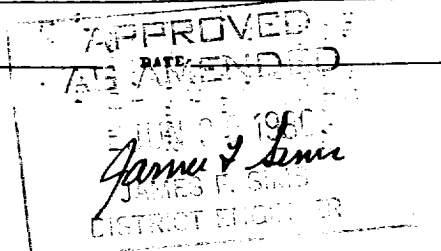


IN ABOVE SPACE DESCRIBE PROPOSED PROGRAM: If proposal is to deepen or plug back, give data on present productive zone and proposed new productive zone. If proposal is to drill or deepen directionally, give pertinent data on subsurface locations and measured and true vertical depths. Give blowout preventer program, if any.

24. Staff Production Analyst DATE May 13, 1980
SIGNED [Signature] TITLE Staff Production Analyst
(This space for Federal or State office use)

PERMIT NO. APPROVAL DATE
APPROVED BY [Signature] TITLE
CONDITIONS OF APPROVAL, IF ANY:

*See Instructions On Reverse Side



NEW MEXICO OIL CONSERVATION COMMISSION
WELL LOCATION AND ACREAGE DEDICATION PLAT

Form C-102
Supersedes C-128
Effective 1-1-65

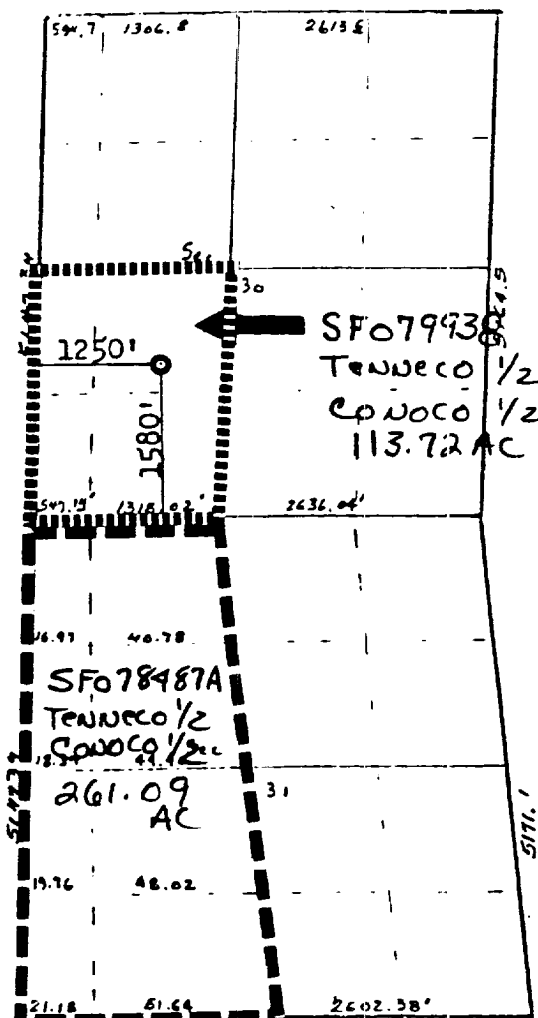
All distances must be from the outer boundaries of the Section.

Operator TENNECO OIL COMPANY		Lease JONES COM		Well No. 1
Unit Letter K	Section 30	Township 29N	Range 8W	County San Juan
Actual Footage Location of Well: 1580 feet from the South line and 1250 feet from the West line				
Ground Level Elev: 6458	Producing Formation Dakota	Pool Basin Dakota	Dedicated Acreage: 374.81 Acres	

1. Outline the acreage dedicated to the subject well by colored pencil or hachure marks on the plat below.
2. If more than one lease is dedicated to the well, outline each and identify the ownership thereof (both as to working interest and royalty).
3. If more than one lease of different ownership is dedicated to the well, have the interests of all owners been consolidated by communitization, unitization, force-pooling, etc?
☒ Yes ☐ No If answer is "yes," type of consolidation communitization

If answer is "no," list the owners and tract descriptions which have actually been consolidated. (Use reverse side of this form if necessary.)

No allowable will be assigned to the well until all interests have been consolidated (by communitization, unitization, forced-pooling, or otherwise) or until a non-standard unit, eliminating such interests, has been approved by the Commission.



Acreage Dedication:
SW 1/4 Section 30
W 1/2 Section 31

Scale: 1"=2000'

CERTIFICATION

I hereby certify that the information contained herein is true and complete to the best of my knowledge and belief.

Martin Lee Freeman
Name

Martin Lee Freeman

Position
Staff Production Analyst

Company
Tenneco Oil Company

Date
May 13, 1980

I hereby certify that the well location shown on this plat was plotted from field notes of actual surveys made by me or under my supervision, and that the same is true and correct to the best of my knowledge and belief.

Date Surveyed
December 7, 1979

Registered Professional Engineer
and Land Surveyor

Fred B. Kerr Jr.
Fred B. Kerr Jr.

Certificate No.
3950

TENNECO OIL COMPANY - 10 POINT PLAN

1. The geological name of the surface formation:
- 2 & 3. Estimated Formation Tops:

(See Attached Drilling Procedure)
4. Proposed Casing Program:

(See Attached Drilling Procedure)
5. Blowout Preventors:
Hydraulic double ram. One set of rams will be provided each size drill pipe in the hole. One set of blind rams at all times. Fill line will be 2", kill line will be 2", choke relief line will be 2". BOP's, drills and tests will be recorded in the driller's log. BOP will be tested every 24 hours and recorded in IADC Log.
6. Mud Program: (Sufficient quantity of mud and weight material will be available on location).

(See Attached Drilling Procedure.)
7. Auxiliary Equipment:
 - a. Kelly cock will be in use at all times.
 - b. Stabbing valve to fit drill pipe will be present on floor at all times.
 - c. Mud monitoring will be visual. No abnormal pressures are anticipated.
 - d. Floats at bits.
 - e. Drill string safety valve(s) to fit all pipe in drill string will be maintained on the rig floor while drilling operations are in progress.
8. Coring, Logging, and Testing Program:

(See Attached Drilling Procedure)
9. No abnormal pressures, temperatures or potential hazards such as H₂S are expected to be encountered.
10. The drilling of this well will start approximately (June 15) and continue for 10 to 12 days.

Your office will be notified of spudding in sufficient time to witness cementing operations. Immediate notice will be given on blowouts, fires, spills, and accidents involving life threatening injuries or loss of life. Prior approval will be obtained before appreciably changing drilling program or commencing plugging operations, plug back work, casing repair work or corrective cementing operations.

TEHNECO OIL COMPANY

PROGNOSIS TO DRILL AND COMPLETE

DIVISION: Rocky Mountain

DATE: August 14, 1979

LEASE: Jones Com

WELL NO.: 4

LOCATION: 1850 FSL, 1250 FWL
Sec. 30 , T 29N, R 8W
San Juan County, New Mexico

FIELD: Basin Dakota

ESTIMATED ELEVATION: 5960' G.L.

ESTIMATED TOTAL DEPTH: 6977'

PROJECTED HORIZON: Dakota

DRILLING, CASING AND CEMENT PROGRAM:

- (1) MIRURT.
- (2) Drill a 13 3/4" hole to 300±. Run 9 5/8", 36#, K-55, ST&C casing to T.D. and cement to surface. Use 2% CaCl₂ in cement.
- (3) Cut off casing and weld on casing head. Pressure test weld to 1000 psi. NUBOP's and manifold. Pressure test casing, BOP's and manifold to 1000 psi for 30 minutes.
- (4) Drill out shoe and reduce hole to 8 3/4". Drill 8 3/4" hole to 3000±. Run 7", 23#, K-55, ST&C casing to T.D. and cement to surface.
- (5) Land casing in slips and cut off. Install drilling spool on casing head. Install rotating head, manifold and flare line. Pressure test blind rams, manifold and casing to 1000 psi for 15 minutes. Pick up drilling assembly and 3 1/2" drill pipe. Pressure test pipe rams to 1000 psi for 15 minutes.
- (6) Drill out of 7" with 6 1/4" bit using gas as circulating fluid. Drill a few feet of formation and then blow hole with gas until it is dusting. Drill to T.D.
- (7) Log the hole dry as directed by the wellsite geological engineer and gauge the natural flow from the Dakota.
- (8) If productive, run 4 1/2" ^{liner} casing to T.D. as per casing design. Cement in one stage. Bring cement to above Mesaverde zone.
- (9) If nonproductive, plug and abandon as per U.S.G.S. requirements.

ESTIMATED FORMATION TOPS:

OJO Alamo	1407' (water)	Mancos	4760' (gas)
Pictured Cliffs	2418' (gas)	Gallup	
Cliffhouse	4070' (gas)	Greenhorn	6617'
Menefee	4190' (gas)	Dakota "A"	6819' (gas)
Point Look Out	4635' (gas)		

DRILLING MUD PROGRAM:

0-300'	Spud Mud
300'-T.D.	7" casing-low solids fresh water mud. No W.L. control.
3000'+-T.D.	Gas

CORING AND TESTING PROGRAM:

No cores or tests. Gauge natural flow from the Dakota.

DEVIATION SURVEYS:

1. Survey surface hole at 100' intervals. Maximum allowable deviation at (1° per 100'.)
2. FROM SURFACE TO TOTAL DEPTH DEVIATION SURVEYS MUST BE TAKEN EVERY 500' OR EACH TRIP WHICHEVER IS FIRST. This may entail running the TOTCO on wireline. Record each survey on the AACDC Drilling Report Sheet. Maximum allowable change in deviation is 1° per 100'.

SAMPLES:

As directed by wellsite geological engineer.

WELL SURVEYS:

GR/FDC/CNL caliper from T.D. to base of Mesaverde.

GR/SP/SN induction from T.D. to surface casing.

BOP: From 300' to T.D. as per U.S.G.S. requirements.

PREVENTORS MUST BE CHECKED FOR OPERATION EVERY 24 HOURS, AND THE CHECK MUST BE RE-CORDED ON THE AACDC DRILLING REPORT SHEET.

REPORTS

Drilling reports for the past 24 hours will include depth, footage, time distribution, activity breakdown, mud properties, bit record, bottom hole assembly, daily and cumulative mud costs, plus any other pertinent information; will be called into Tenneco Oil Company, Denver, Colorado between 7:30 A.M. and 8:00 A.M.

1. 303-758-7130 (office) - Don Barnes
303-758-7287 - Don Barnes private line - Monday-Friday (before 7:45 A.M.)
2. 303-936-0704 (home) - Don Barnes - weekends and holidays
3. 303-424-1269 (home) - John Owen - if Don Barnes not available

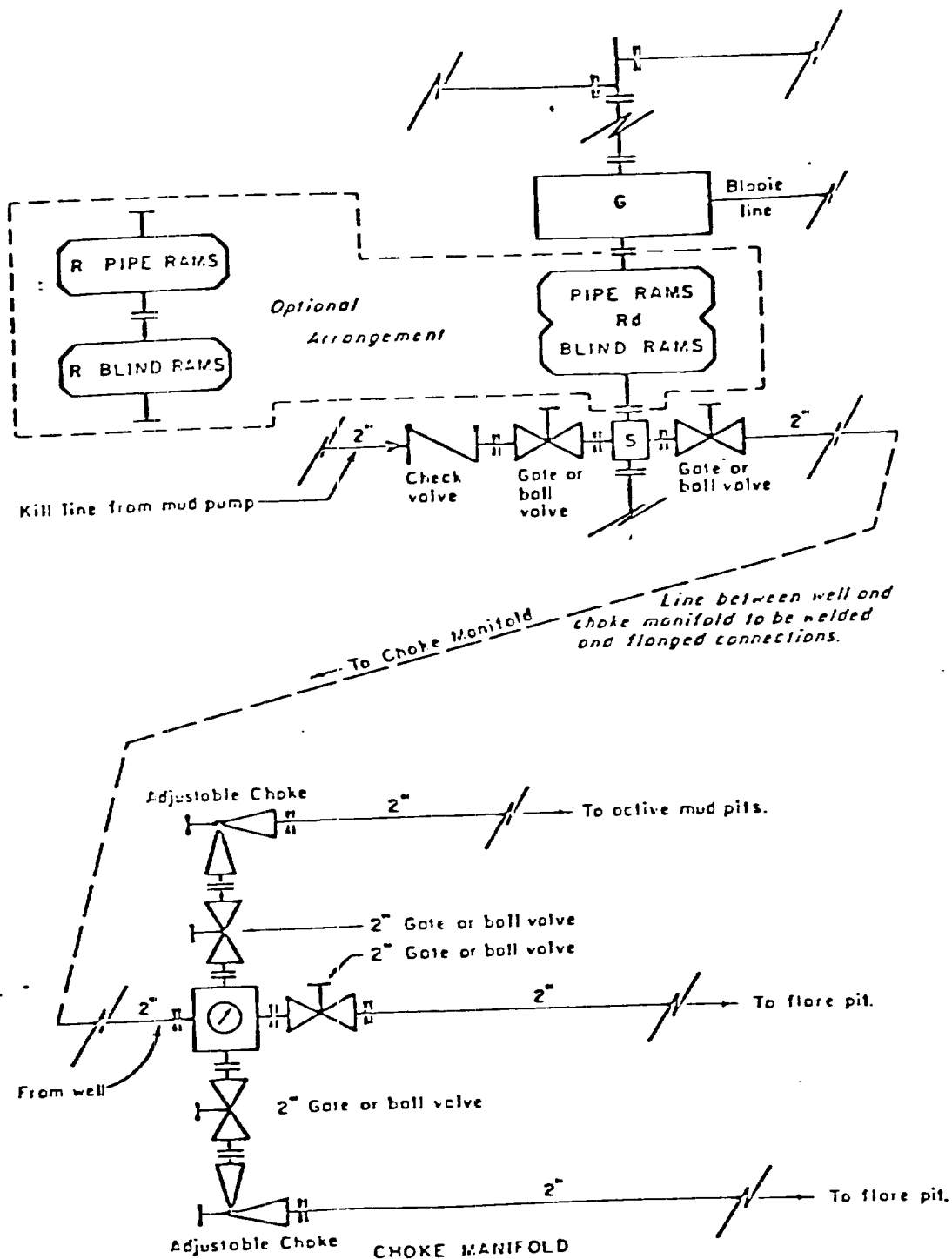
The yellow sheet of the IADC Report to be filled out completely, the original copy of the drilling time recorder, and copies of any invoices from this well signed and received for Tenneco Oil Company will be mailed daily to:

TENNECO OIL COMPANY
PENTHOUSE
720 SOUTH COLORADO BOULEVARD
DENVER, COLORADO 80222

ATTENTION: DRILLING DEPARTMENT

In case of an emergency, notify the following:

1. Mr. Don Barnes, Division Drilling Engineer - 303-936-0704.
2. Mr. John Owen, Project Drilling Engineer - 303-424-1269.
3. Mr. Mike Lacey, Division Production Manager - 303-979-0509.




- All equipment to be 3,000 psi working pressure except as noted.
- Rd Double ram type preventer with two sets of rams.
- R Single ram type preventer with one set of rams.
- S Drilling spool with side outlet connections for choke and kill lines.
- G Rotating head 150 psi working pressure minimum

ARRANGEMENT C

TENNECO OIL COMPANY
ROCKY MOUNTAIN DIVISION
REQUIRED MINIMUM
BLOWOUT PREVENTER AND
CHOKES MANIFOLD

1. Existing Road - please refer to Map No. 1 which shows the existing roads. New roads which will be required have been marked on this map. All existing and new roads will be properly maintained during the duration of this project.
2. Planned Access Roads - Please refer to Map No. 1. The grade of the access roads will be consistent with that of the local terrain. The road surface will not exceed twenty feet (20') in width. Upon completion of the project, the access road will be adequately drained to control soil erosion. Drainage facilities may include ditches, water bars, culverts or any other measure deemed necessary by trained Company personnel to insure proper drainage. Gates and/or cattleguards will be installed if necessary.
3. Location of Existing Wells - Please refer to Map No. 2.
4. Location of Tank Batteries, Production Facilities, and Production Gathering and Service Lines - Please refer to Maps No. 1 and No. 2. Map No. 2 shows the existing roads and new proposed access roads. All known production facilities are shown on these two maps.
5. Location and Type of Water Supply - Water for the proposed project will be obtained from a private source.
6. Source of Construction Materials - No additional materials will be required to build either the access road or the proposed location.
7. Methods of Handling Waste Materials - All garbage and trash materials will be put into a burn pit shown on the attached Location Plat No. 1. When clean-up operations are begun on the proposed project, the burn pit with its refuse will be buried to a depth of at least three feet (3'). A latrine, the location of which is also shown on Plat No. 1. will be provided for human waste. If large amounts of liquids are left in the reserve pit after completion of the project, the pit will be fenced until the liquids have had adequate time to dry. The location clean-up will not take place until such time as the reserve pit can be properly covered over to prevent run-off from carrying any of these materials into the watershed. No earthen pit will be located on natural drainage; all earthen pits will be so constructed as to prevent leakage from occurring.

8. Ancillary Facilities - No camps or airstrips will be associated with this project.
9. Wellsite Layout - Please refer to the attached Plat No. 1.
10. Plans for Restoration of the Surface - After completion of the proposed project the location will be cleaned and leveled. The location will be left in such a condition that will enable reseeding operations to be carried out. Seed mixture as designated by the responsible government agency will be used. The reseeding operation will be performed during the time period set forth by the regulatory body. The location production equipment will be painted as designated by the responsible government agency.
11. Other Information - The proposed site is located above Canyon Largo on Manzanares Mesa. The topography is broken by erosional gullies. The soil is rocky, lomy sand supporting Pinon, juniper, brush and native grasses.
12. Operator's Representative - See drilling prognosis.
13. Certification - I hereby certify that I, or persons under my direct supervision, have inspected the proposed drillsite and access route; that I am familiar with the conditions which presently exist; that the statements mad in this plan are, to the best of my knowledge, true and correct; and that the work associated with the operations proposed herein will be performed by Tenneco Oil Company and its contractors and sub-contractors in conformity with this plan and the terms and conditions under which it is approved.


L. Freeman
Staff Production Analyst

TENNECO OIL COMPANY

CALCULATION SHEET

EXHIBIT

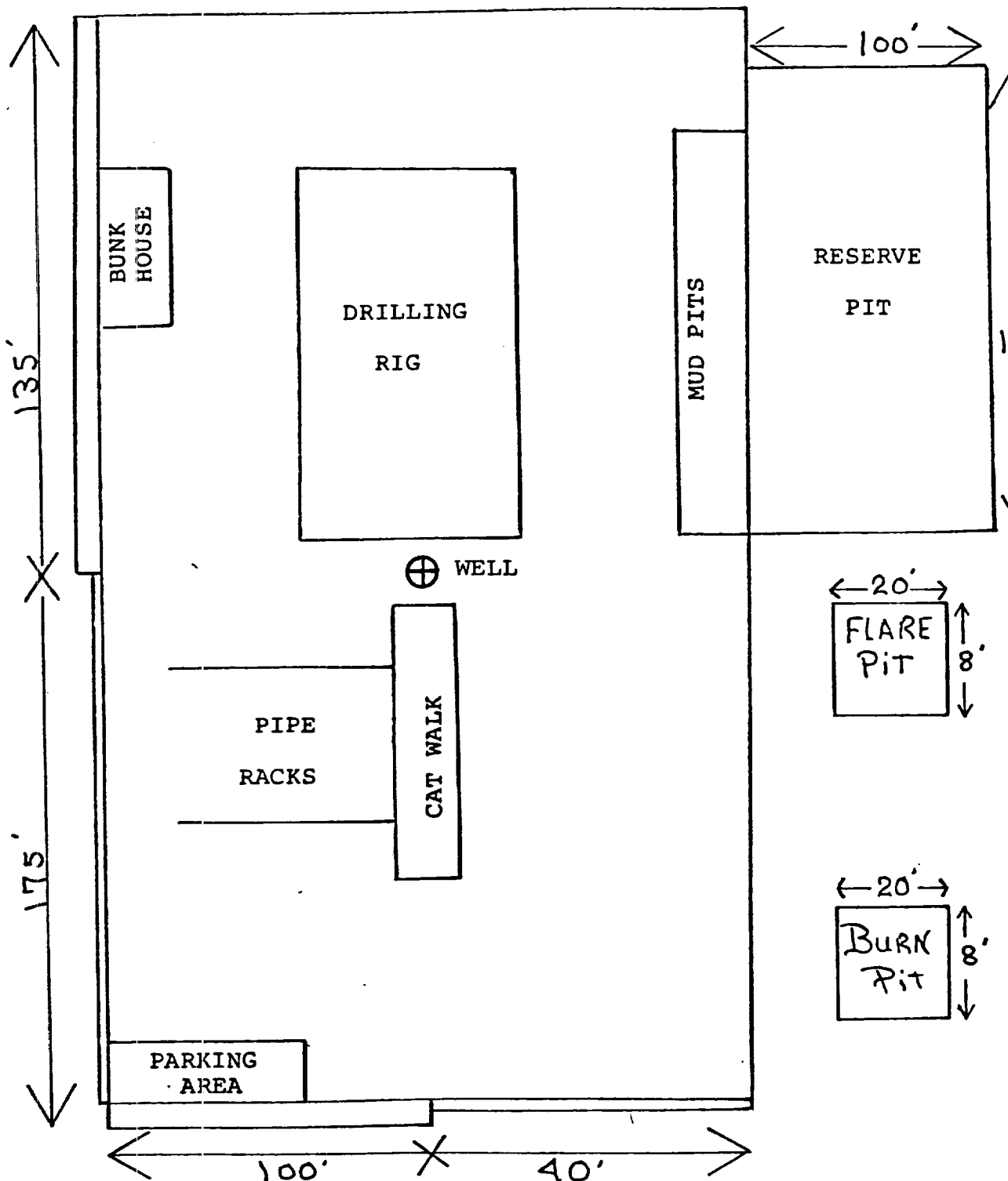
MPANY

SUBJECT DRILLING WELL SITE LAYOUT *Jones Com 4*

LOCATION

DATE *5-12-1980*

*Lay down South West. No new road.
Max cut 4'
Max fill 5'*



30 40
60 70 000m N.

BLOOMFIELD 12 40
BLAND 16 40

T. 29 N

2 000 000 FEET
(CENTRAL)

40

T. 28 N

BLOOMFIELD

Vicinity Map for
TENNECO OIL COMPANY #4 JONES COM
1580'FSL 1250'FWL Sec 30-T29N-R8W
SAN JUAN COUNTY, NEW MEXICO

