

UNITED STATES
DEPARTMENT OF THE INTERIOR
BUREAU OF LAND MANAGEMENT

FORM APPROVED
Budget Bureau No. 1004-0135
Expires: March 31, 1993

SUNDRY NOTICES AND REPORTS ON WELLS

Do not use this form for proposals to drill or to deepen or reentry to a different reservoir.

Use "APPLICATION FOR PERMIT - " for such proposals

1. Type of Well
☐ Oil Well ☒ Gas Well ☐ Other

2. Name of Operator
Amoco Production Company

Attention:
Gail M. Jefferson, Rm 1295C

3. Address and Telephone No.
P.O. Box 800, Denver, Colorado 80201 (303) 830-6157

4. Location of Well (Footage, Sec., T., R., M., or Survey Description)
1580FSL 1250FWL Sec. 30 T 29N R 8W Unit K

5. Lease Designation and Serial No.
SF-079938

6. If Indian, Allottee or Tribe Name

7. If Unit or CA, Agreement Designation

8. Well Name and No.
Jones Com #4 B

9. API Well No.
3004524430

10. Field and Pool, or Exploratory Area

11. County or Parish, State
San Juan New Mexico

12. CHECK APPROPRIATE BOX(S) TO INDICATE NATURE OF NOTICE, REPORT, OR OTHER DATA

TYPE OF SUBMISSION	TYPE OF ACTION
<input checked="" type="checkbox"/> Notice of Intent	<input type="checkbox"/> Abandonment
<input type="checkbox"/> Subsequent Report	<input type="checkbox"/> Recompletion
<input type="checkbox"/> Final Abandonment Notice	<input type="checkbox"/> Plugging Back
	<input type="checkbox"/> Casing Repair
	<input type="checkbox"/> Altering Casing
	<input type="checkbox"/> Other
	<input type="checkbox"/> Change of Plans
	<input type="checkbox"/> New Construction
	<input type="checkbox"/> Non-Routine Fracturing
	<input type="checkbox"/> Water Shut-Off
	<input type="checkbox"/> Conversion to Injection
	<input type="checkbox"/> Dispose Water

(Note: Report results of multiple completion on Well Completion or Recompletion Report and Log form.)

13. Describe Proposed or Completed Operations (Clearly state all pertinent details, and give pertinent dates, including estimated date of starting any proposed work. If well is directionally drilled, give subsurface locations and measured and true vertical depths for all markers and zones pertinent to this work.)

Amoco Production Company requests permission to Reperf the Dakota horizon, recomplete to the Mesaverde horizon and downhole commingle the Dakota and the Mesaverde per the attached procedures.

If you have any technical questions please contact Stan Kolodzie at (303) 830-4769 or Gail M. Jefferson for any administrative questions.

RECEIVED
DEC - 1 1995
OIL OPER. DIV.
BUREAU

14. I hereby certify that the foregoing is true and correct

Signed

Gail M. Jefferson

Title

Sr. Admin. Staff Asst

Date

11/13/95

(This space for Federal or State office use)

Approved by

OK E

Title

Date

Conditions of approval, if any:

NOV 27 1995

DISTRICT MANAGER

Recompletion
Jones Corn 4 - Run 45
October 30, 1995

Procedure:

1. Check bradenhead pressure. Relay results to Stan Kolodzie in Denver.
2. Move in rig. Rig Up. Nipple up blowout preventer. Install 7" blooie lines.
3. Blow down and control well. The Dakota work should be a "Hot Work" repair if possible. WITHIN THE BOUNDARIES OF WORKING REASONABLY SAFELY try to prevent using kill fluids to prevent the fluids from invading the Dakota pay intervals.
4. Pull Dakota 2 3/8" tubing string.
5. Run 4 1/2" bit and scraper and clean out to PBTD at 7540'.
6. Reperforate the Dakota pay zone with 2 JSPF over the following intervals:

Dakota Perforations:	7286 - 7292	13 shots
	7374 - 7378	9 shots
	7432 - 7438	13 shots
	7446 - 7452	13 shots
	7462 - 7467	11 shots
	7476 - 7482	13 shots
	7502 - 7508	13 shots
	7514 - 7528	29 shots
	7532 - 7538	13 shots
	Total	127 shots

7. Run wireline-set Bridge Plug to temporarily shut off Dakota. Set Bridge Plug at approx 7200'. Cover Bridge Plug with 50 foot of sand.
8. Run packer and pressure test casing to 1000 psi. If casing integrity fails notify Stan Kolodzie in Denver. A casing repair will be done unless the cost to repair the casing appears too high.

9. Run casing gun and perforate new Menefee/Pt Lookout intervals. Since the pay zone is to be fraced, perforating underbalance is not needed and a lubricator is not required. A fluid column giving 700 psi hydrostatic head at the perfs should be sufficient to control thge pressure in the Mesa Verde. Perforate the following intervals with 3 1/8" casing gun, 2 shots per interval, 120 degree phasing:

Menefee/Pt Lookout	4819 - 4822	7 shots
	4846 - 4851	11 shots
	4927 - 4935	17 shots
	4951 - 4971	41 shots
	5004 - 5014	21 shots
	5026 - 5030	9 shots
	5108 - 5111	7 shots

Recompletion
Jones Com 4 - Run 45
October 30, 1995

5141 - 5150	19 shots
5196 - 5207	23 shots
5214 - 5231	35 shots
5240 - 5248	17 shots
5251 - 5256	11 shots
Total	218 shots

10. Frac the Menefee/Pt Lookout perforations according to the attached Frac Schedule A.

NOTE THAT MENEFEET/PT LOOKOUT INTERVAL IS TO BE FRACED SEPARATE FROM THE CLIFFHOUSE. THE FLOW BACK/CLEAN UP SCHEDULE AFTER THIS FRAC WILL REQUIRE A PERIOD OF 2 TO 3 DAYS BETWEEN THIS FRAC AND THE CLIFFHOUSE FRAC. THIS FLOW BACK/CLEAN UP PERIOD SHOULD NOT BE CHANGED WITHOUT PRIOR APPROVAL OF THE ENGINEER.

11. After the shut-in period, run 2 3/8" tubing to the Menefee/Pt Lookout interval. Set tubing at approx 5200' and produce the Menefee/Pt Lookout to clean up the liquids from the interval.

12. Run wireline-set Bridge Plug to temporarily shut off the Menefee/Pt Lookout interval. Set Bridge Plug at 4800'. Cover bridge plug with 50 foot of sand.

13. Run casing gun and perforate new Cliffhouse intervals. Since the pay zone is to be fraced, perforating underbalance is not needed and a lubricator is not required. A fluid column giving 700 psi hydrostatic head at the perfs should be sufficient to control the pressure in the Mesa Verde. Perforate the following intervals with 3 1/8" casing gun, 2 shots per interval, 120 degree phasing.

Cliffhouse Peforations:	4617 - 4628	23 shots
	4630 - 4638	17 shots
	4661 - 4671	21 shots
	4682 - 4698	33 shots
	4701 - 4710	19 shots
	Total	113 shots

10. Frac the Cliffhouse perforations according to the attached Frac Schedule B.

11. After the shut-in period, run 2 3/8" tubing to the Cliffhouse interval. Set tubing at approx 4700' and produce the Cliffhouse to clean up the liquids from the interval.

12. Pull work tubing.

13. Retrieve bridge plug to open up Menefee/Pt Lookout perfs.

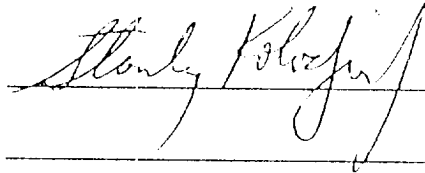
14. Retrieve bridge plug to open up Dakota interval.

Recompletion
Jones Com 4 - Run 45
October 30, 1995

15. Run 2 3/8" production tubing to approx. 7500.
16. Remove BOP. Hook up well to production equipment.
15. Unload well with air unit or Nitrogen if necessary. Flow well to atmosphere with 1/2" or 3/4" choke for 2 hours to estimate gas rate for completion report.
16. RDMO service unit. Return well to production.

AUTHORIZATIONS

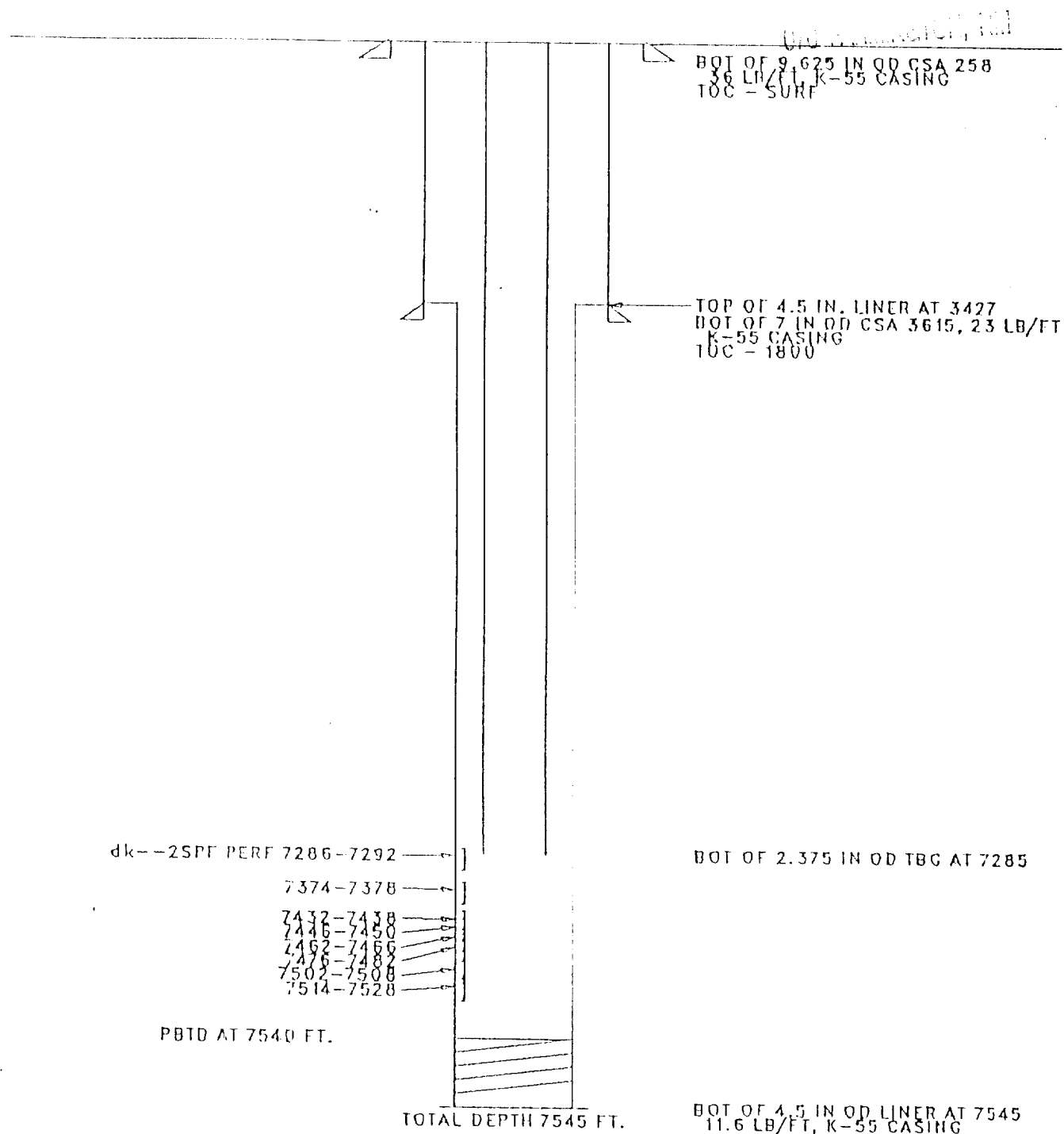
ENGINEER



PRODUCTION FOREMAN

WORKOVER FOREMAN

JONES COM 004 185
Location - 30J-29N-8W
SINGLE dk
Orig. Completion - 11/80
Last File Update - 1/89 by BCB



Cathodic Protection - γ
none noted

District I
PO Box 1980, Hobbs, NM 88241-1980

District II

811 South First, Artesia, NM 88210

District III

1000 Rio Brazos Rd., Aztec, NM 87410

District IV

2040 South Pacheco, Santa Fe, NM 87505

State of New Mexico
Energy, Minerals & Natural Resources Department

OIL CONSERVATION DIVISION
2040 South Pacheco
Santa Fe, NM 87505

68
C

Form C-102

Revised October 18, 1994

Instructions on back

Submit to Appropriate District Office

State Lease - 4 Copies

Fee Lease - 3 Copies

☐ AMENDED REPORT

WELL LOCATION AND ACREAGE DEDICATION PLAT

1 APT Number 3004524430	2 Pool Code 72319	3 Pool Name Blanco Mesaverde
4 Property Code 000760	5 Property Name Jones Com <i>Pritchard</i>	6 Well Number #4 <i>B</i>
7 OGRID No. 000778	8 Operator Name Amoco Production Company	9 Elevation 6458

10 Surface Location

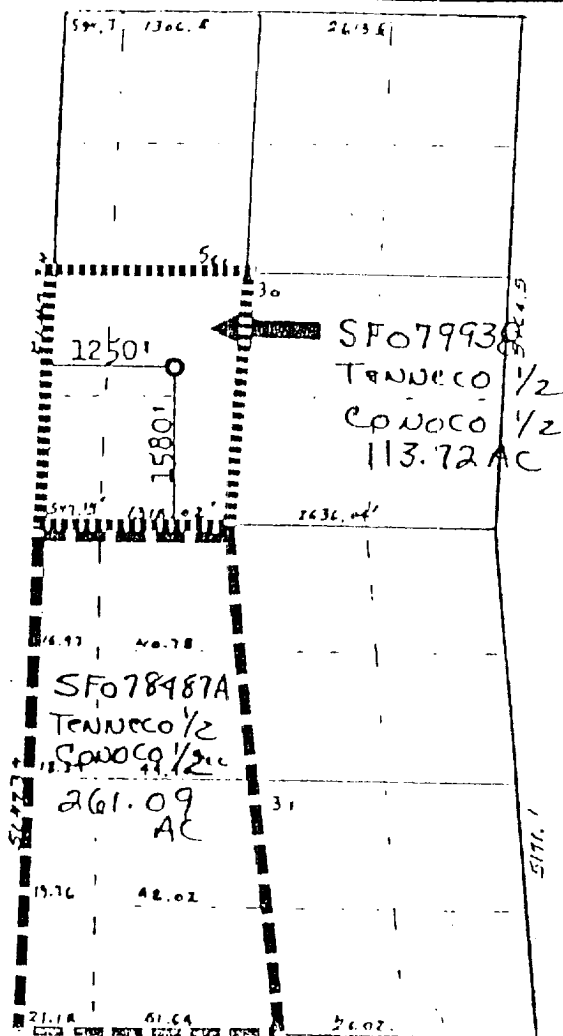
UL or lot no.	Section	Township	Range	Lot Idn	Feet from the	North/South line	Feet from the	East/West line	County
K	30	29N	8W		1580	South	1250	West	San Juan

11 Bottom Hole Location If Different From Surface

UL or lot no.	Section	Township	Range	Lot Idn	Feet from the	North/South line	Feet from the	East/West line	County

12 Dedicated Acres 375.09	13 Joint or Infill	14 Consolidation Code	15 Order No.
------------------------------	--------------------	-----------------------	--------------

NO ALLOWABLE WILL BE ASSIGNED TO THIS COMPLETION UNTIL ALL INTERESTS HAVE BEEN CONSOLIDATED
OR A NON-STANDARD UNIT HAS BEEN APPROVED BY THE DIVISION



Acreage Dedication:
SW/4 Section 30
W/2 Section 31

17 OPERATOR CERTIFICATION

I hereby certify that the information contained herein is true and complete to the best of my knowledge and belief

Gail M. Jefferson
Signature

Gail M. Jefferson

Printed Name

Sr. Admin. Staff Asst.

Title

11/16/95

Date

18 SURVEYOR CERTIFICATION

I hereby certify that the well location shown on this plat was plotted from field notes of actual surveys made by me or under my supervision, and that the same is true and correct to the best of my belief.

December 7, 1979

Date of Survey

Signature and Seal of Professional Surveyor:

3950

Certificate Number