

UNITED STATES
DEPARTMENT OF THE INTERIOR
GEOLOGICAL SURVEY

SUNDRY NOTICES AND REPORTS ON WELLS

(Do not use this form for proposals to drill or to deepen or plug back to a different reservoir. Use Form 9-331-C for such proposals.)

1. oil ☐ well gas ☒ well other ☐
2. NAME OF OPERATOR
Tenneco Oil Company
3. ADDRESS OF OPERATOR
P. O. Box 3249, Englewood, CO 80155
4. LOCATION OF WELL (REPORT LOCATION CLEARLY. See space 17 below.)
AT SURFACE: 1800' FSL 790' FEL
AT TOP PROD. INTERVAL:
AT TOTAL DEPTH:

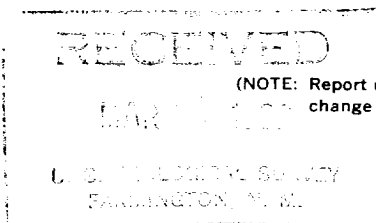
16. CHECK APPROPRIATE BOX TO INDICATE NATURE OF NOTICE, REPORT, OR OTHER DATA

REQUEST FOR APPROVAL TO:

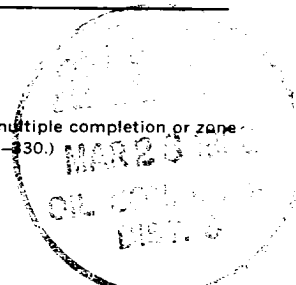
TEST WATER SHUT-OFF ☐
FRACTURE TREAT ☐
SHOOT OR ACIDIZE ☐
REPAIR WELL ☐
PULL OR ALTER CASING ☐
MULTIPLE COMPLETE ☐
CHANGE ZONES ☐
ABANDON* ☐
(other) ☐

SUBSEQUENT REPORT OF:

☐
☐
☐
☐
☐
☐
☐
☐
☐
☐



(NOTE: Report results of multiple completion or zone change on Form 9-330.)



17. DESCRIBE PROPOSED OR COMPLETED OPERATIONS (Clearly state all pertinent details, and give pertinent dates, including estimated date of starting any proposed work. If well is directionally drilled, give subsurface locations and measured and true vertical depths for all markers and zones pertinent to this work.)*

2-26-82 - MIRUSU, NDWH, NUBOP. Talleyed top layer tbg.
2-27-82 - RIH w/tbg. Tagged cmt @ 7395'. Drill to PBTD of 7795'. Circ'd hole w/1% KCL wtr. Spotted 300 gal 7½ DI HCL across perfs. POOH w/tbg. Ran GR/CCL. Perf'd Dakota w/lJSPF 7746-72' (26', 26 holes).
2-28-82 - Acidized and balled off w/500 gal 15% weighted HCL and 30 1.1 SG ball slrs. Ball off complete.
3-2-82 - RIH w/tbg. Loaded hole w/1% KCL water. Spotted 500 gal 7½ DI HCL across perfs. POOH w/tbg. Perf'd Dakota w/l JSPF 7536-54', 7641-45', 7666-74', 7692-95', 7705-22', 7716-20' (43' 43 holes). Acidized and balled off w/1000 gal 15% weighted HCL and 64 1.1 SG ball slrs. Acid away. Ball off complete.
3-3-82 - Frac'd w/85,000 gal 30# XL gel and 183,000 20/40 SD.
3-4-82 - RIH w/tbg. Tagged SD fill @ 7760'. CO to PBTD w/foam. Killed tbg and landed @ 7642'. NDBOP, NUWH, RDMOSU. Kicked well around w/N2.
3-5-82 - Flwd to CU.

Subsurface Safety Valve: Manu. and Type _____ Set @ _____ Ft.

18. I hereby certify that the foregoing is true and correct

SIGNED Rumia Peron TITLE Production Analyst DATE 3/12/82

(This space for Federal or State office use)

APPROVED BY _____ TITLE _____ DATE _____
CONDITIONS OF APPROVAL, IF ANY:

ACCEPTED FOR RECORD

*See Instructions on Reverse Side

NMOCC

MAR 16 1982
FARMINGTON DISTRICT
BY Smh