

UNITED STATES  
DEPARTMENT OF THE INTERIOR  
GEOLOGICAL SURVEY

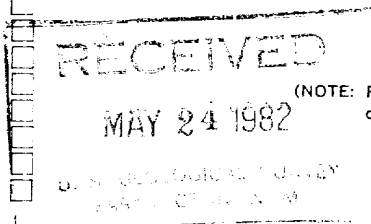
**SUNDRY NOTICES AND REPORTS ON WELLS**

(Do not use this form for proposals to drill or to deepen or plug back to a different reservoir. Use Form 9-331-C for such proposals.)

1. oil ☐ well gas ☒ well other
2. NAME OF OPERATOR  
Tenneco Oil Company
3. ADDRESS OF OPERATOR  
P. O. Box 3249, Englewood, CO 80155
4. LOCATION OF WELL (REPORT LOCATION CLEARLY. See space 17 below.)  
AT SURFACE: 930' FSL 990' FEL  
AT TOP PROD. INTERVAL:  
AT TOTAL DEPTH:
16. CHECK APPROPRIATE BOX TO INDICATE NATURE OF NOTICE, REPORT, OR OTHER DATA

REQUEST FOR APPROVAL TO:  
TEST WATER SHUT-OFF ☐  
FRACTURE TREAT ☐  
SHOOT OR ACIDIZE ☐  
REPAIR WELL ☐  
PULL OR ALTER CASING ☐  
MULTIPLE COMPLETE ☐  
CHANGE ZONES ☐  
ABANDON\* ☐  
(other) Move location

SUBSEQUENT REPORT OF:



(NOTE: Report results of multiple completion or zone change on Form 9-330.)

17. DESCRIBE PROPOSED OR COMPLETED OPERATIONS (Clearly state all pertinent details, and give pertinent dates, including estimated date of starting any proposed work. If well is directionally drilled, give subsurface locations and measured and true vertical depths for all markers and zones pertinent to this work.)\*

Tenneco respectfully requests permission to move this well location from 1500' FSL 810' FEL to 930' FSL 990' FEL. This move is necessary in order to maintain a reasonable distance from an existing El Paso well.

Subsurface Safety Valve: Manu. and Type \_\_\_\_\_ Set @ \_\_\_\_\_ Ft.

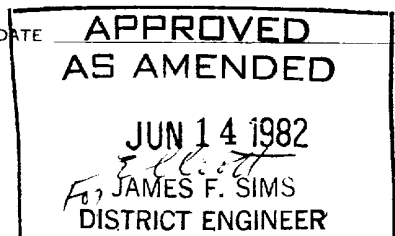
18. I hereby certify that the foregoing is true and correct

SIGNED Ken Russell TITLE Sr. Prod. Analyst DATE 5/19/82

(This space for Federal or State office use)

APPROVED BY \_\_\_\_\_ TITLE \_\_\_\_\_ DATE \_\_\_\_\_  
CONDITIONS OF APPROVAL, IF ANY:

\*See Instructions on Reverse Side



NMOCC

## OIL CONSERVATION DIVISION

STATE OF NEW MEXICO  
ENERGY AND MINERALS DEPARTMENTP. O. BOX 2088  
SANTA FE, NEW MEXICO 87501Form C-102  
Revised 10-1-78

All distances must be from the outer boundaries of the Section.

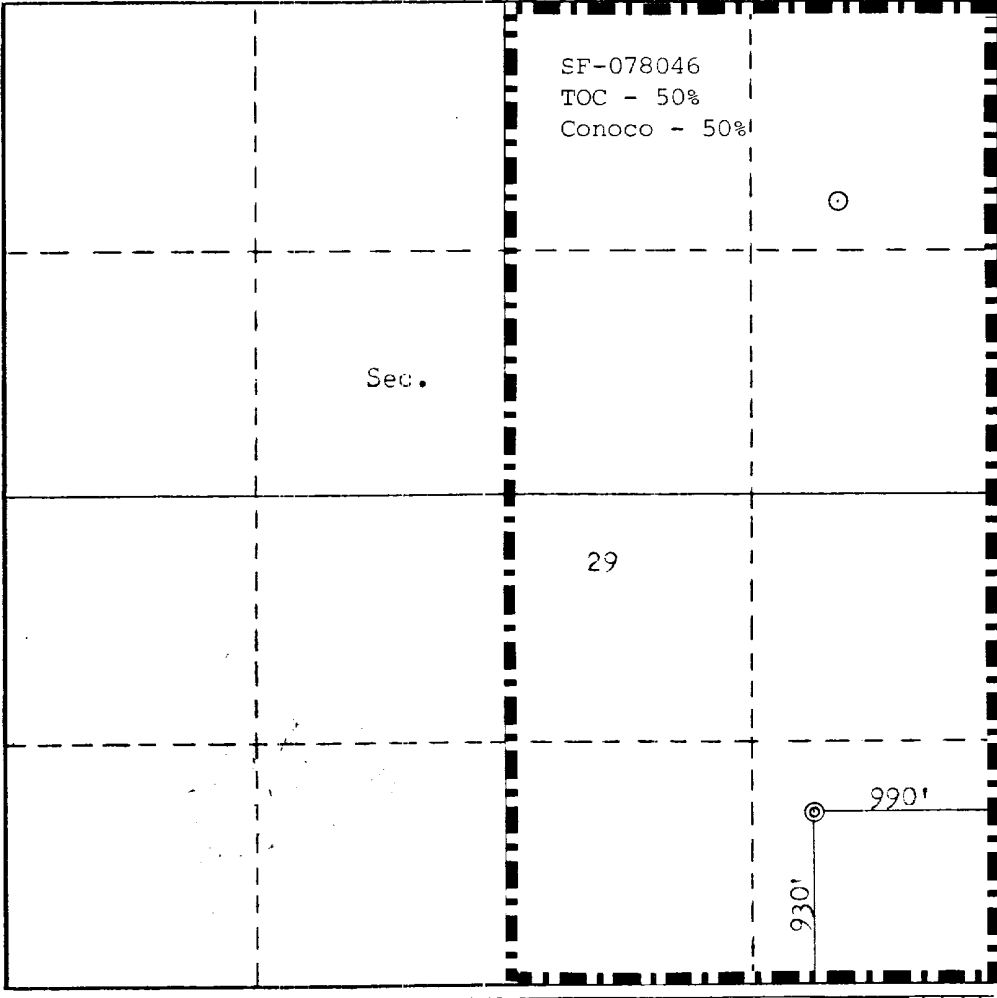
Operator <b>TENNECO OIL COMPANY</b>			Lease <b>HUGHES</b>		Well No. <b>4E</b>
Unit Letter <b>P</b>	Section <b>29</b>	Township <b>29N</b>	Range <b>8W</b>	County <b>San Juan</b>	
Actual Footage Location of Well: <b>930</b> feet from the <b>South</b> line and <b>990</b> feet from the <b>East</b> line					
Ground Level Elev. <b>6357</b>	Producing Formation <b>Basin Dakota</b>		Pool <b>Basin Dakota</b>		Dedicated Acreage: <b>320</b> Acres

1. Outline the acreage dedicated to the subject well by colored pencil or hachure marks on the plat below.
2. If more than one lease is dedicated to the well, outline each and identify the ownership thereof (both as to working interest and royalty).
3. If more than one lease of different ownership is dedicated to the well, have the interests of all owners been consolidated by communitization, unitization, force-pooling, etc?

☐ Yes ☐ No If answer is "yes," type of consolidation \_\_\_\_\_

If answer is "no," list the owners and tract descriptions which have actually been consolidated. (Use reverse side of this form if necessary.) \_\_\_\_\_

No allowable will be assigned to the well until all interests have been consolidated (by communitization, unitization, forced-pooling, or otherwise) or until a non-standard unit, eliminating such interests, has been approved by the Commission.

	<b>CERTIFICATION</b>
	<p>I hereby certify that the information contained herein is true and complete to the best of my knowledge and belief.</p> <p><i>Ken Russell</i></p> <p>Name <b>Ken Russell</b></p> <p>Position <b>Sr. Production Analyst</b></p> <p>Company <b>Tenneco Oil Company</b></p> <p>Date <b>May 19, 1982</b></p> <p>I hereby certify that the well location shown on this plat was plotted from field notes of actual surveys made by me or under my supervision, and that the same is true and correct to the best of my knowledge and belief.</p> <p>Date Surveyed <b>May 12, 1982</b></p> <p>Registered Professional Engineer and/or Land Surveyor <i>Fred B. Kerr Jr.</i> <b>Fred B. Kerr Jr.</b></p> <p>Certificate No. <b>3950</b></p>

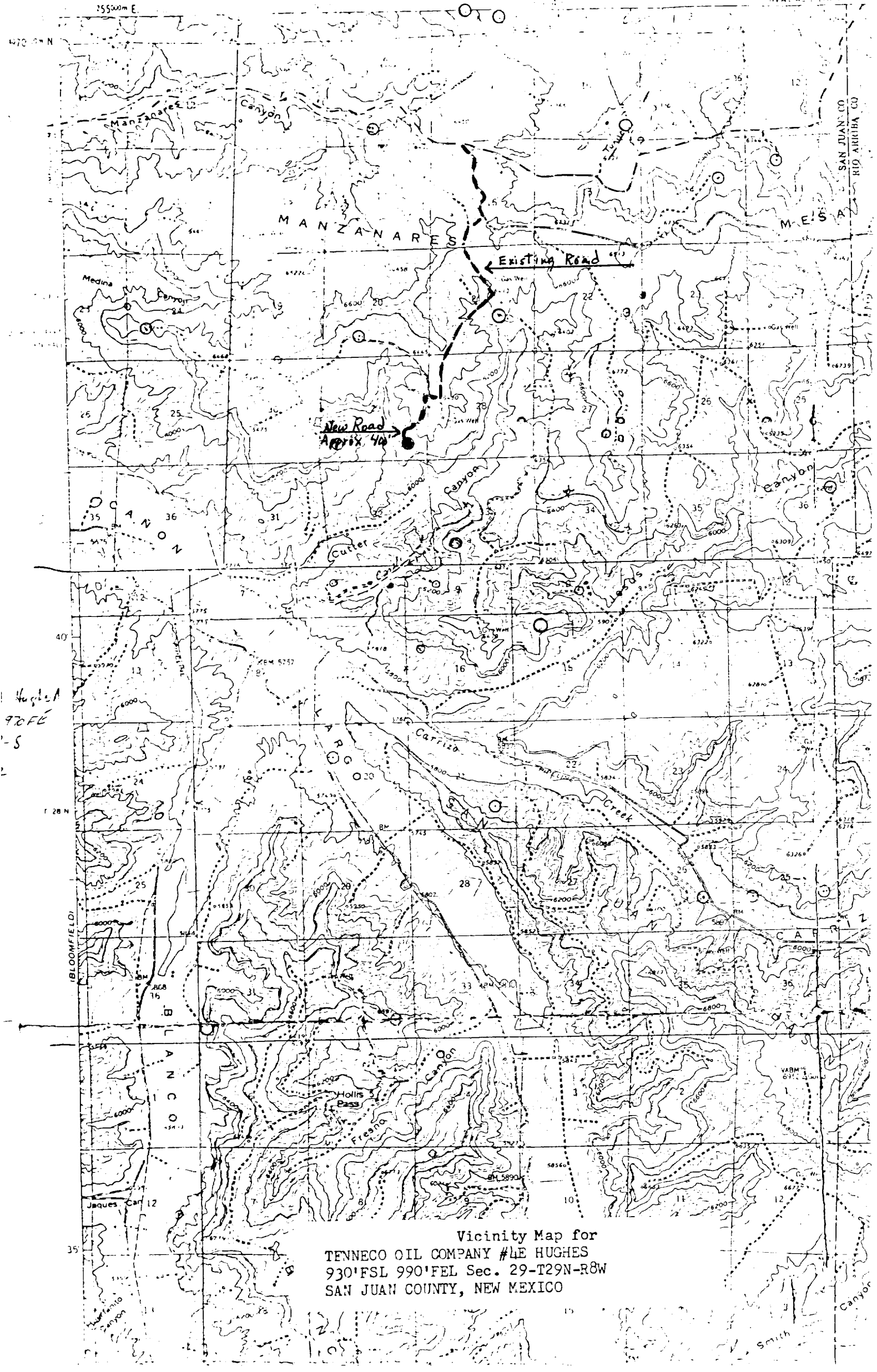
UNITED STATES  
DEPARTMENT OF THE INTERIOR  
GEOLOGICAL SURVEY

355500m E

17414.04M

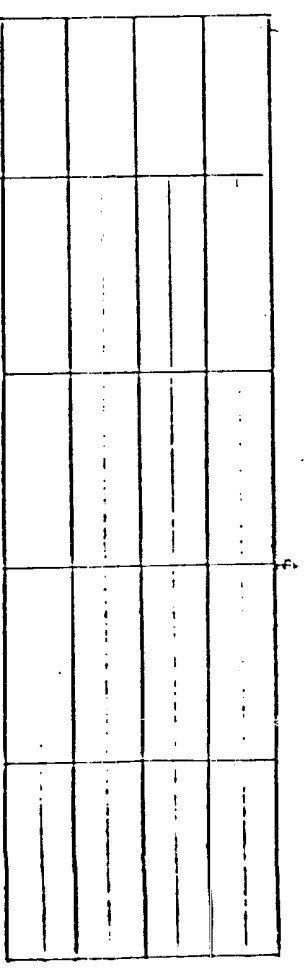
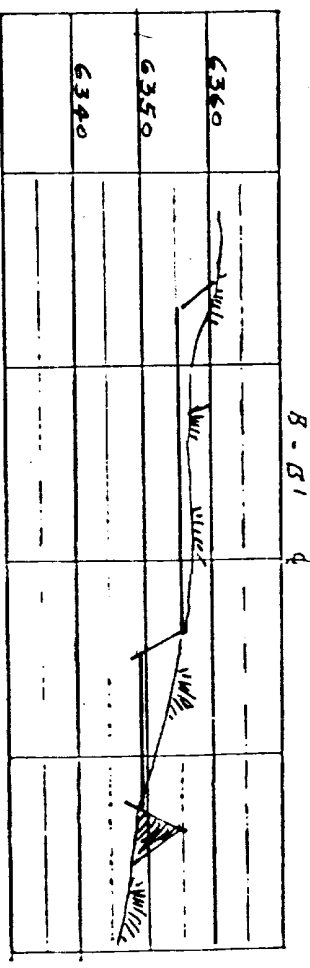
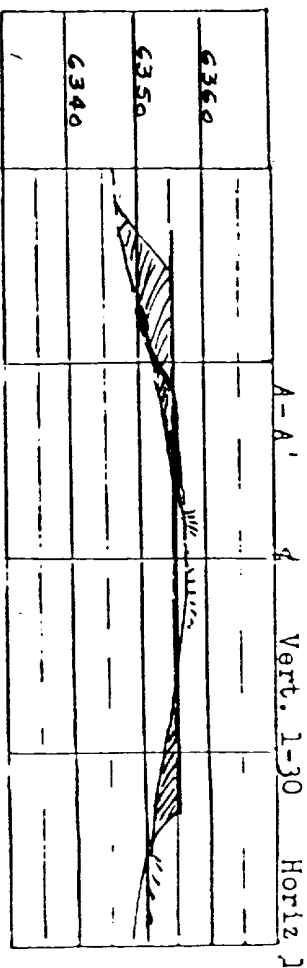
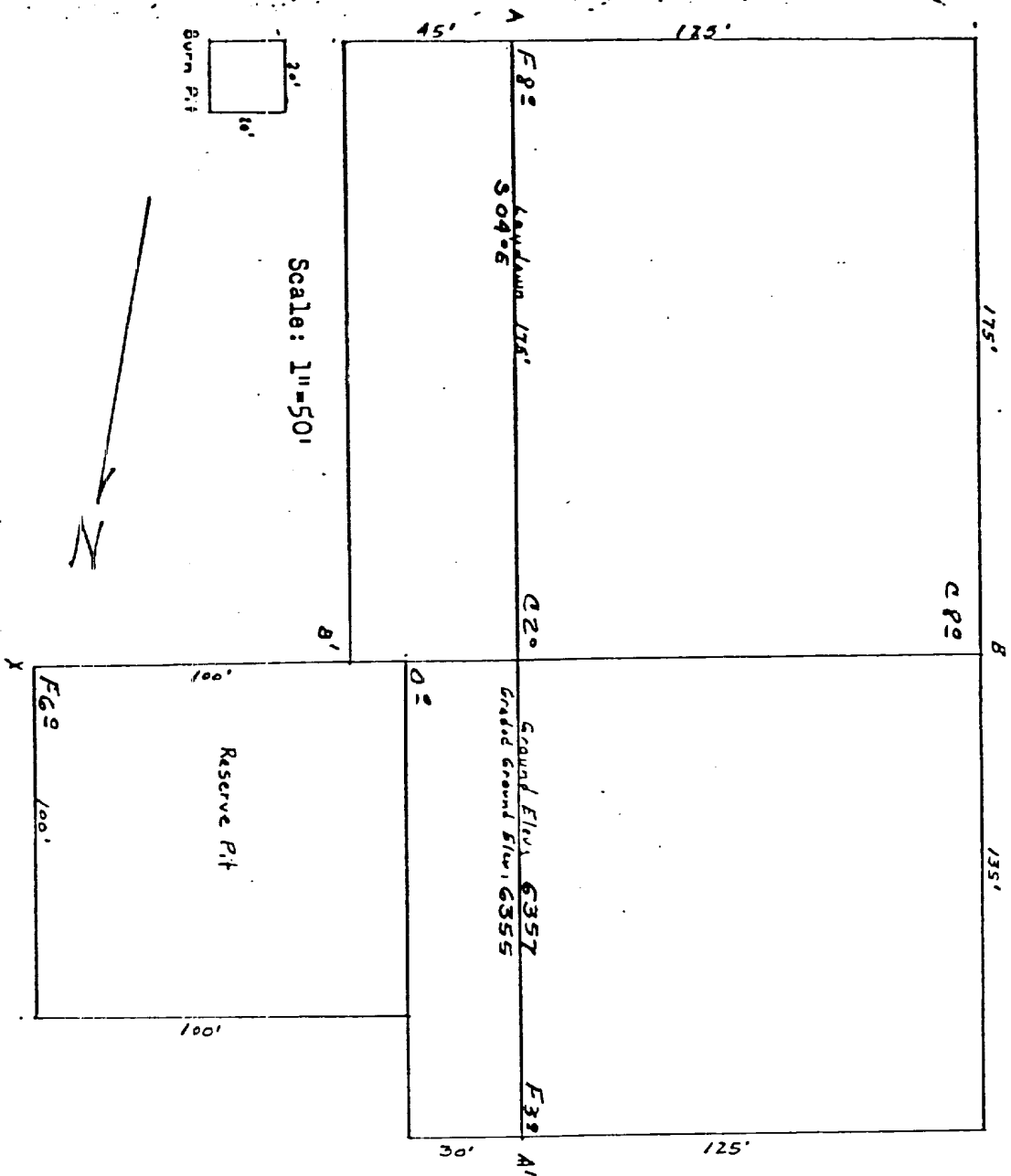
470 24 N

SAN JUAN CO  
RIO ARriba CO



Vicinity Map for  
TENNECO OIL COMPANY #4E HUGHES  
930'FSL 990'FEL Sec. 29-T29N-R8W  
SAN JUAN COUNTY, NEW MEXICO

Profile Map for  
 TENNECO OIL COMPANY # LE HUGHES  
 930' FSL 990' FEL Sec. 29-T29N-R6W  
 SAN JUAN COUNTY, NEW MEXICO



Date: 5-12-82