

UNITED STATES  
DEPARTMENT OF THE INTERIOR  
BUREAU OF LAND MANAGEMENT

30-045-28659

APPLICATION FOR PERMIT TO DRILL, DEEPEN, OR PLUG BACK

a. TYPE OF WORK  
DRILL ☒ DEEPEN ☐ PLUG BACK ☐

b. TYPE OF WELL

OIL  
WELL ☐

GAS  
WELL ☒

OTHER

SINGLE  
ZONE ☐

MULTIPLE  
ZONE ☐

2. NAME OF OPERATOR

14433

McKenzie Methane Corporation

3. ADDRESS OF OPERATOR

1911 Main Suite 255 Durango, CO 81301

4. LOCATION OF WELL (Report location clearly and in accordance with any State requirements.)\*

At surface

1149'

1163' FNL

1519'

1567' FEL

At proposed prod. zone

same

14. DISTANCE IN MILES AND DIRECTION FROM NEAREST TOWN OR POST OFFICE\*

15 miles East of Blanco, NM

15. DISTANCE FROM PROPOSED\*

LOCATION TO NEAREST  
PROPERTY OR LEASE LINE, FT.

1163'

(Also to nearest drlg. unit line, if any)

18. DISTANCE FROM PROPOSED LOCATION\*

TO NEAREST WELL, DRILLING, COMPLETED,

OR APPLIED FOR, ON THIS LEASE, FT.

200'

16. NO. OF ACRES IN LEASE

581.09

17. NO. OF ACRES ASSIGNED

TO THIS WELL

E/2 320

19. PROPOSED DEPTH

2525'

20. ROTARY OR CABLE TOOLS

ROTARY

21. ELEVATIONS (Show whether DP, RT, GR, etc.)

6006' GL

22. APPROX. DATE WORK WILL START\*

April 6, 1992

PROPOSED CASING AND CEMENTING PROGRAM

SIZE OF HOLE	SIZE OF CASING	WEIGHT PER FOOT	SETTING DEPTH	GENERAL QUANTITY OF CEMENT
12 1/4"	8 5/8"	24	250'	175 sx (207 cu ft)
7 7/8"	4 1/2"	10.5	2525'	400 sx 65/35 POZ +
				125 sx 50/50 POZ (887 cu ft)

"Approval of this action does  
not warrant that the applicant  
holds legal or equitable rights  
or title to this lease."

RECEIVED  
APR 9 1992  
OIL CON. DIV.  
DIST. 3

IN ABOVE SPACE DESCRIBE PROPOSED PROGRAM: If proposal is to deepen or plug back, give data on present productive zone and proposed new productive zone. If proposal is to drill or deepen directionally, give pertinent data on subsurface locations and measured and true vertical depths. Give blowout preventer program, if any.

SIGNED [Signature] TITLE Operations Manager

APPROVED  
AS AMENDED

(This space for Federal or State office use)

PERMIT NO.

APPROVAL DATE

APPROVED BY

TITLE

CONDITIONS OF APPROVAL, IF ANY:

APR 07 1992  
[Signature]  
AREA MANAGER  
DATE

NM000

\*See Instructions On Reverse Side

100-2012-  
00  
DATE: 1/11/12  
BY: [illegible]  
MOD: JC  
DIR. COM. DIA  
2012

100-2012-00  
DATE: 1/11/12  
BY: [illegible]  
MOD: JC  
DIR. COM. DIA  
2012

100-2012-00  
DATE: 1/11/12  
BY: [illegible]  
MOD: JC  
DIR. COM. DIA  
2012

Submit to Appropriate  
District Office  
State Lease - 4 copies  
Fee Lease - 3 copies

State of New Mexico  
Energy, Minerals and Natural Resources Department

Form C-102  
Revised 1-1-89

OIL CONSERVATION DIVISION

P.O. Box 2088  
Santa Fe, New Mexico 87504-2088

DISTRICT I  
P.O. Box 1980, Hobbs, NM 88240

DISTRICT II  
P.O. Drawer DD, Artesia, NM 88210

DISTRICT III  
1000 Rio Brazos Rd., Aztec, NM 87410

WELL LOCATION AND ACREAGE DEDICATION PLAT

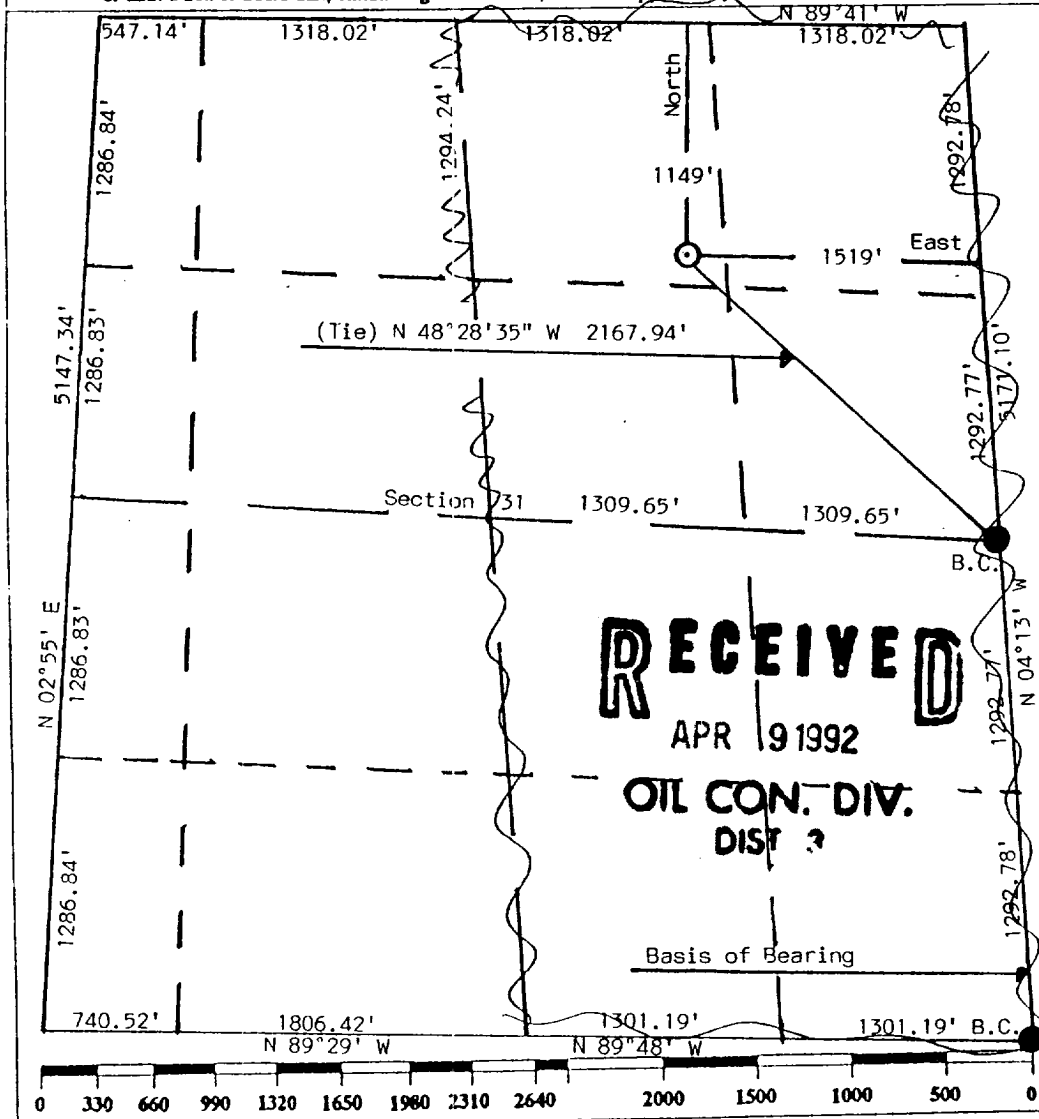
All Distances must be from the outer boundaries of the section

Operator McKenzie Methane Corporation			Lease Largo 31B		Well No. 31-18
Unit Letter B	Section 31	Township 29 North	Range 8 West	County NMPM	San Juan

Actual Footage Location of Well:

1149 feet from the North line and	1519 feet from the East line		
Ground level Elev. 6006 Est.	Producing Formation Fruitland Coal	Pool Basin Fruitland Coal	Dedicated Acreage: E/2 320 Acres

- Outline the acreage dedicated to the subject well by colored pencil or hatchure marks on the plat below.
- If more than one lease is dedicated to the well, outline each and identify the ownership thereof (both as to working interest and royalty).
- If more than one lease of different ownership is dedicated to the well, have the interest of all owners been consolidated by communitization, unitization, force-pooling, etc.?  
☐ Yes ☐ No If answer is "yes" type of consolidation \_\_\_\_\_  
If answer is "no" list the owners and tract descriptions which have actually been consolidated. (Use reverse side of this form if necessary.)  
No allowable will be assigned to the well until all interests have been consolidated (by communitization, unitization, forced-pooling, or otherwise) or until a non-standard unit, eliminating such interest, has been approved by the Division.



OPERATOR CERTIFICATION

I hereby certify that the information contained herein is true and complete to the best of my knowledge and belief.

Signature: *R. J. Sagle*  
Printed Name: R. J. Sagle  
Position: OPERATIONS MANAGER  
Company: McKenzie Methane  
Date: 3-3-92

SURVEYOR CERTIFICATION

I hereby certify that the well location shown on this plat was plotted from field notes of actual surveys made by me or under my supervision, and that the same is true and correct to the best of my knowledge and belief.

Date Surveyed: February 28, 1992

Signature & Seal of Professional Surveyor

Edgar L. Risenhoover, P.S.  
Certificate No. 5979

RECEIVED

APR 10 1963

OIL CONT. DIV.

FILE 3

