

UNITED STATES  
DEPARTMENT OF THE INTERIOR

BUREAU OF LAND MANAGEMENT

Form approved.  
Budget Bureau No. 1004-0136  
Expires: December 31, 1991

APPLICATION FOR PERMIT TO DRILL OR DEEPEN

1a. TYPE OF WORK

DRILL ☒

DEEPEN ☐

b. TYPE OF WELL

OIL WELL ☐

GAS WELL ☒

Other ☐

SINGLE ZONE ☒

MULTIPLE ZONE ☐

2. NAME OF OPERATOR

AMOCO PRODUCTION COMPANY 000778 Gail M. Jefferson

3. ADDRESS AND TELEPHONE NO.

P.O. BOX 800, DENVER, COLORADO 80201 (303) 830-6157

4. LOCATION OF WELL (Report location clearly and in accordance with any State requirements. \*)

At surface

2220' FNL

1770' FEL

At proposed prod. zone

Unit G

14. DISTANCE IN MILES AND DIRECTION FROM NEAREST TOWN OR POST OFFICE\*

8 miles from the town of Blanco, New Mexico

15. DISTANCE FROM PROPOSED\* LOCATION TO NEAREST PROPERTY OR LEASE LINE, FT. (Also to nearest drilg. unit line, if any)

16. NO. OF ACRES IN LEASE

1692.62

17. NO. OF ACRES ASSIGNED TO THIS WELL

E/ 320.00

18. DISTANCE FROM PROPOSED LOCATION\* TO NEAREST WELL, DRILLING, COMPLETED, OR APPLIED FOR, ON THIS LEASE, FT.

19. PROPOSED DEPTH

5833'

20. ROTARY OR CABLE TOOLS

Rotary

21. ELEVATIONS (Show whether DF, RT, GR., etc.)

This action is subject to technical and procedural review pursuant to 43 CFR 3165.3 and appeal pursuant to 43 CFR 3165.4.

6448' GL

22. APPROX. DATE WORK WILL START\*

11-01-1998

PROPOSED CASING AND CEMENTING PROGRAM

SIZE OF HOLE	GRADE, SIZE OF CASING	WEIGHT PER FOOT	SETTING DEPTH	QUANTITY OF CEMENT
12.25	K-55 9.625	36#	250'	172 cu. ft. Cl. B to surface
8.75	K-55 7.000	20#	3203'	853 cu. ft. Cl. B to surface
6.25	K-55 4.500	10.5#	5833'	391 cu. ft. Cl B to 2953'

Notice of Staking submitted as Day B #1B on 9/9/98.

Lease Description: T29N-R8W  
Sec. 7: Lots 5, 6, 7, 8, E/2  
Sec. 8: Lots 1-8, S/2  
Sec. 17: E/2  
Sec. 18: E/2

containing 1692.62 acres, more or less.

DRILLING OPERATIONS AUTHORIZED ARE  
SUBJECT TO COMPLIANCE WITH ATTACHED  
"GENERAL REQUIREMENTS"

RECEIVED  
NOV - 5 1998

OIL CON. DIV.  
DIST. 3

IN ABOVE SPACE DESCRIBE PROPOSED PROGRAM: If proposal is to deepen, give data on present productive zone and proposed new productive zone. If proposal is to drill or deepen directionally, give pertinent data on subsurface locations and measured and true vertical depths. Give blowout preventer program, if any.

24.

SIGNED

Gail M. Jefferson

TITLE Sr. Admin. Staff Asst.

DATE 9/28/98

(This space for Federal or State office use)

PERMIT NO.

APPROVAL DATE

NOV 03 1998

Application approved does not warrant or certify that the applicant holds legal or equitable title to those rights in the subject lease which would entitle the applicant to conduct operations thereon.

CONDITIONS OF APPROVAL, IF ANY:

JS/ Duane W. Spencer

APPROVED BY

TITLE

DATE

NOV - 3 1998

NSL-4146E

\*See Instructions On Reverse Side

Title 18 U.S.C. Section 1001, makes it a crime for any person knowingly and willfully to make to any department or agency of the United States any false, fictitious or fraudulent statements or representations as to any matter within its jurisdiction.

AMOCO

District I  
PO Box 1980, Hobbs NM 88241-1980  
District II  
PO Drawer KK, Artesia, NM 87211-0719  
District III  
1000 Rio Brazos Rd., Aztec, NM 87410  
District IV  
PO Box 2088, Santa Fe, NM 87504-2088

State of New Mexico  
Energy, Minerals & Natural Resources Department

OIL CONSERVATION DIVISION  
PO Box 2088  
Santa Fe, NM 87504-2088

Form C-102  
Revised February 21, 1994

Instructions on back  
Submit to Appropriate District Office  
State Lease - 4 Copies  
Fee Lease - 3 Copies

☐ AMENDED REPORT

WELL LOCATION AND ACREAGE DEDICATION PLAT

<sup>1</sup> API Number 30-045-29721	<sup>2</sup> Pool Code 72319	<sup>3</sup> Pool Name Blanco Mesaverde
<sup>4</sup> Property Code 421	<sup>5</sup> Property Name DAY B	<sup>6</sup> Well Number # 1B
<sup>7</sup> OGRID No. 000778	<sup>8</sup> Operator Name AMOCO PRODUCTION COMPANY	<sup>9</sup> Elevation 6448

<sup>10</sup> Surface Location

UL or Lot No. G	Section 17	Township 29 N	Range 8 W	Lot Idn	Feet from the 2220	North/South line NORTH	Feet from the 1770	East/West line EAST	County SAN JUAN
--------------------	---------------	------------------	--------------	---------	-----------------------	---------------------------	-----------------------	------------------------	--------------------

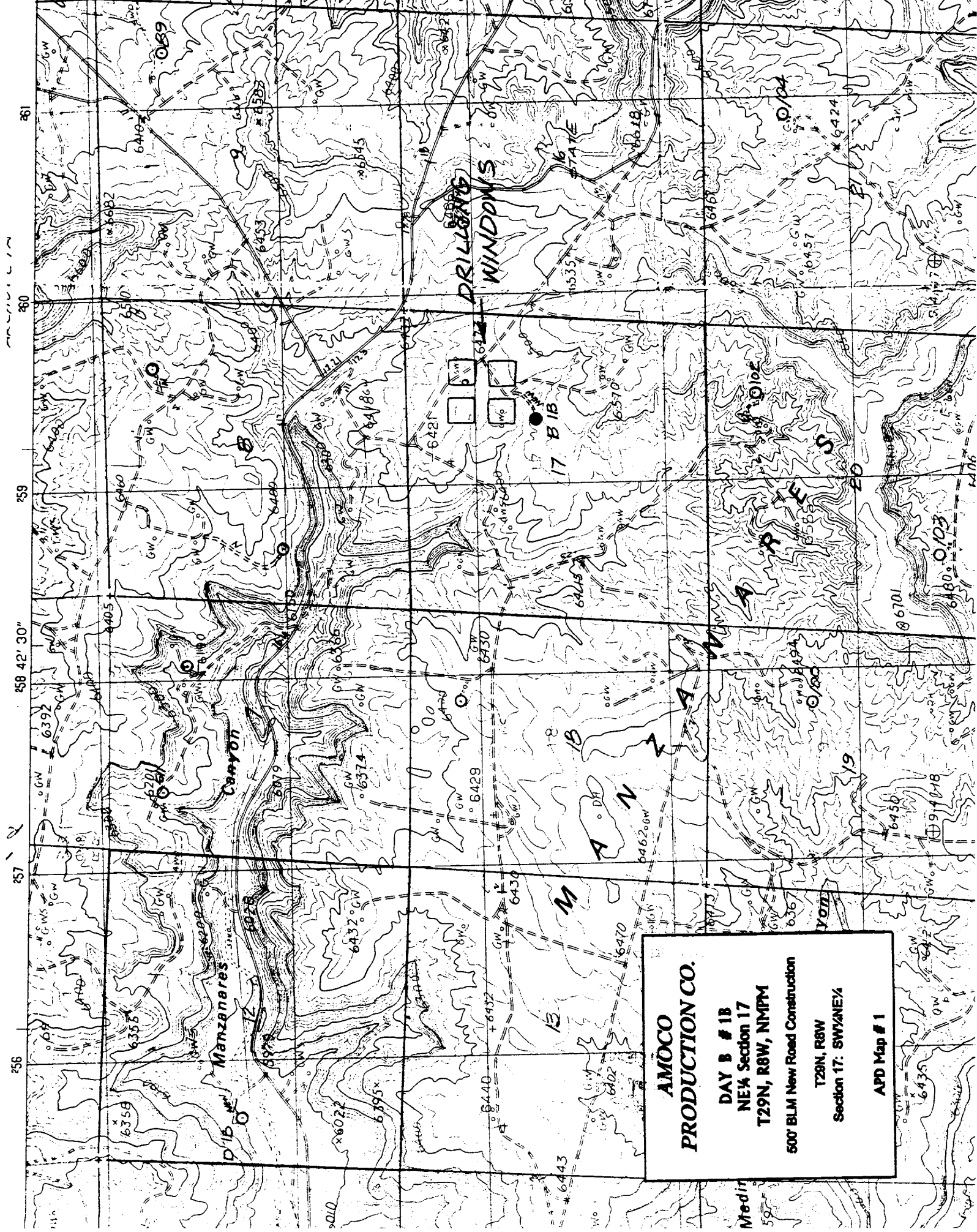
<sup>11</sup> Bottom Hole Location If Different From Surface

<sup>12</sup> UL or lot no.	<sup>13</sup> Section	<sup>14</sup> Township	<sup>15</sup> Range	<sup>16</sup> Lot Idn	<sup>17</sup> Feet from the	<sup>18</sup> North/South line	<sup>19</sup> Feet from the	<sup>20</sup> East/West line	<sup>21</sup> County
<sup>22</sup> Dedicated Acre 320.00	<sup>23</sup> Joint or Infill	<sup>24</sup> Consolidation Code	<sup>25</sup> Order No.						

NO ALLOWABLE WILL BE ASSIGNED TO THIS COMPLETION UNTIL ALL INTEREST HAVE BEEN CONSOLIDATED  
OR A NON-STANDARD UNIT HAS BEEN APPROVED BY THE DIVISION

<div>RECEIVED NOV - 5 1998 OIL CON. DIV. DIST. 3</div>	<div>5145 (R)</div>	<div>2220'</div>	<div>1770'</div>	<div>5197 (R)</div>	<div><sup>17</sup> OPERATOR CERTIFICATION I hereby certify that the information contained herein is true and complete to the best of my knowledge and belief.  Gail M. Jefferson Signature Gail M. Jefferson Printed Name Sr. Admin. Staff Asst. Title 9/8/98 Date</div>
	<div>5163 (R)</div>				<div><sup>18</sup> SURVEYOR CERTIFICATION I hereby certify that the well location shown on this plat was plotted from field notes of actual surveys made by me or under my supervision, and that the same is true and correct to the best of my belief. August 26, 1998 Date of Survey Signature and Seal of Professional Land Surveyor <div>NEW MEXICO REGISTERED PROFESSIONAL LAND SURVEYOR 7016</div></div>
	<div>5172 (R)</div>				<div>7016 Certificate Number</div>

(R) - BLM Record



**AMOCO  
PRODUCTION CO.**

DAY B # 1B  
NE¼ Section 17  
T29N, R8W, NMPM  
500' BLM New Road Construction

T29N, R8W  
Section 17: SW¼NE¼

APD Map # 1



NEW MEXICO ENERGY, MINERALS  
& NATURAL RESOURCES DEPARTMENT

OIL CONSERVATION DIVISION  
2040 South Pacheco Street  
Santa Fe, New Mexico 87505  
(505) 827-7131

October 13, 1998

RECEIVED  
OCT 15 1998  
OIL CON. DIV.  
DIST. 3

Amoco Production Company  
P. O. Box 800  
Denver, Colorado 80201-0800  
Attention: Pamela Staley

Administrative Order NSL-4146

Dear Ms. Staley:

Reference is made to your application dated September 15, 1998, which was received by the New Mexico Oil Conservation Division ("Division") in Santa Fe on September 18, 1998, for an exception to the well location requirements provided within the "Special Rules and Regulations for the Blanco-Mesaverde Pool," as promulgated by Division Order No. R-10987, for a non-standard gas well location in an existing standard 320-acre stand-up gas spacing and proration unit for the Blanco-Mesaverde Pool comprising the E/2 of Section 17, Township 29 North, Range 8 West, NMPM, San Juan County, New Mexico. This unit is currently dedicated to Amoco Production Company's: (i) Day "B" Well No. 1 (API No. 30-045-08375), the initial well on this unit, located at a standard gas well location 990 feet from the North and East lines (Unit A) of Section 17; and, (ii) Day "B" Well No. 1-A (API No. 30-045-22712), located at a standard infill gas well location 1110 feet from the South line and 850 feet from the East line (Unit P) of Section 17.

The application has been duly filed under the provisions of Division Rules 104.F and 605.B of the General Rules and Regulations of the New Mexico Oil Conservation Division ("Division").

By the authority granted me under the provisions of Division Rule 104.F(2), the following described well to be drilled at an unorthodox gas well location in Section 17 is hereby approved:

Day "B" Well No. 1-B  
2220' FNL & 1770' FEL (Unit G). 1/11/99

Further, Amoco Production Company is authorized to dedicate Blanco-Mesaverde gas production on the subject unit from the proposed Day "B" Well No. 1-B with the two existing Day "B" Well Nos. 1 and 1-A. These three wells and the existing 320-acre unit will be subject to all existing rules, regulations, policies, and procedures applicable to prorated gas pools in Northwest, New Mexico.

Sincerely,

Lori Wrotenberg  
Director

LW/MES/kv

cc: New Mexico Oil Conservation Division - Aztec /  
U. S. Bureau of Land Management - Farmington



**Amoco Exploration and Production**

Amoco Building  
1670 Broadway  
Post Office Box 800  
Denver, Colorado 80201-0800  
(303) 830-4040

September 15, 1998

Ms. Lori Wrotenbery, Director  
New Mexico Oil Conservation Division  
2040 S. Pacheco Street  
P.O. Box 6429  
Santa Fe, NM 87505

**Application For Unorthodox Location**

**Day /B/ #1B Well**

**2220' FNL & 1770' FEL**

**Unit G Section 17-T29N-R8W**

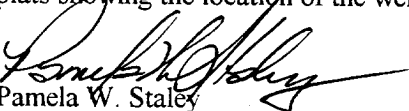
**E/2 Spacing Unit**

**Blanco Mesaverde Pool**

**San Juan County, New Mexico**

Amoco Production Company hereby requests administrative approval for an unorthodox well location for the Day /B/ #1B well in the Blanco Mesaverde Pool. Amoco plans to drill this well at an unorthodox location as a third well in the existing spacing unit to access reserves which would otherwise be bypassed with the current well density. This well, as proposed, would be moving toward the center line of the spacing unit only and would be well within the standard 790 foot setback from the outer boundaries of the spacing unit. We are locating this well toward the center of the spacing unit, away from the parent and original infill, which would cause it to fall outside the traditional drilling windows for the Blanco Mesaverde Pool.

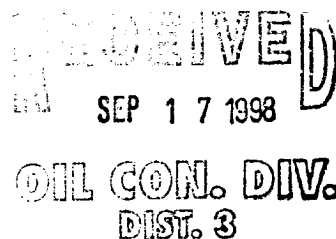
A copy of this application will be submitted to the offset operators by certified mail with a request that they furnish your Santa Fe office with a Waiver of Objection, and return one copy to this office. Attached are plats showing the location of the well, offset operators, and all wells drilled in the area.

  
Pamela W. Staley

**Attachments**

cc: Frank Chavez, Supervisor  
NMOCD District III  
1000 Rio Brazos Road  
Aztec, NM 87410

Mark Yamasaki, Amoco  
Gail Jefferson, Amoco



**WAIVER**

\_\_\_\_\_ hereby waives objection to Amoco's application for an unorthodox well location for the Day /B/ #1B well described above.

By: \_\_\_\_\_

Date: \_\_\_\_\_

APPLICATION FOR APPROVAL OF UNORTHODOX LOCATION UNDER RULE 104-F

Day /B/ #1B Well  
2220' FNL & 1770' FEL  
Unit G Section 17-T29N-R8W  
Blanco Mesaverde Pool

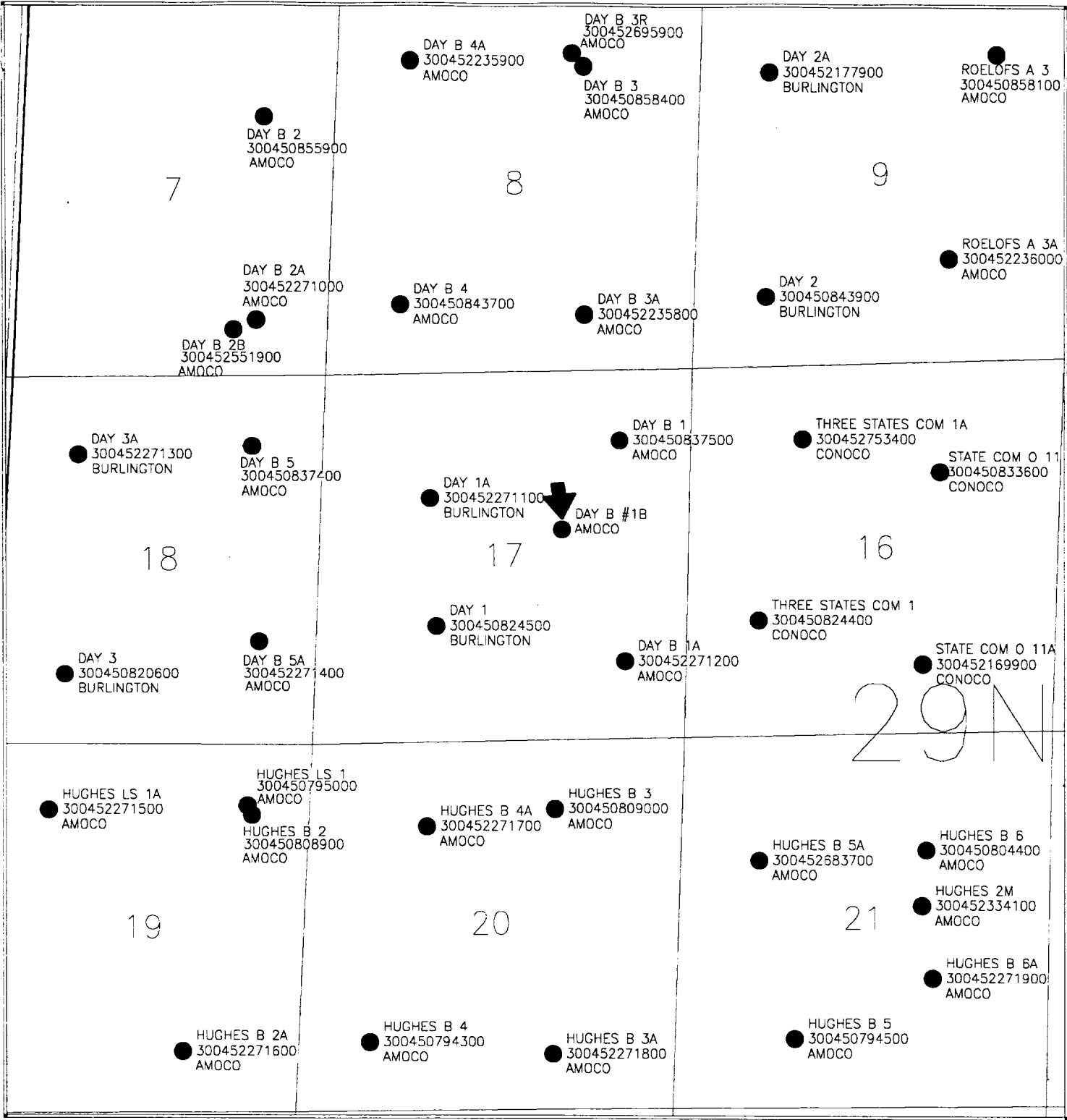
ATTACHMENTS:

- 9-SECTION PLAT SHOWING LOCATION OF ALL OFFSET WELLS
- FORM C-102 FOR MESAVERDE FORMATION
- LIST OF ALL OFFSET OPERATORS AND THEIR ADDRESSES

LIST OF ADDRESSES FOR OFFSET OPERATORS

1 Burlington Resources Oil and Gas Co.  
P.O. Box 4289  
Farmington, NM 87499

2 Conoco, Inc.  
10 Desta Drive West  
Midland, Texas 79705



AMOCO PRODUCTION COMPANY		
DAY B #1B - NEW DRILL MESAVERDE - NINE SECTION PLAT 29N-8W-17SW/NE		
ALC		9/9/98
	Scale 1:22862.54	

District II  
100 Drawer KK, Artesia, NM 87211-0719  
District III  
1000 Rio Brazos Rd., Aztec, NM 87410  
District IV  
PO Box 2088, Santa Fe, NM 87504-2088

Energy, Minerals & Natural Resources Department

OIL CONSERVATION DIVISION  
PO Box 2088  
Santa Fe, NM 87504-2088

Revised February 21, 1994

Instructions on back  
Submit to Appropriate District Office  
State Lease - 4 Copies  
Fee Lease - 3 Copies

☐ AMENDED REPORT

WELL LOCATION AND ACREAGE DEDICATION PLAT

1 API Number		2 Pool Code 72319		3 Pool Name Blanco Mesaverde		
4 Property Code		5 Property Name DAY B			6 Well Number # 1B	
7 OGRID No. 000778		8 Operator Name AMOCO PRODUCTION COMPANY			9 Elevation 6448	

10 Surface Location

UL or Lot No. G	Section 17	Township 29 N	Range 8 W	Lot Idn	Feet from the 2220	North/South line NORTH	Feet from the 1770	East/West line EAST	County SAN JUAN
--------------------	---------------	------------------	--------------	---------	-----------------------	---------------------------	-----------------------	------------------------	--------------------

11 Bottom Hole Location If Different From Surface

12 UL or lot no.	Section	Township	Range	Lot Idn	Feet from the	North/South line	Feet from the	East/West line	County
13 Dedicated Acres 320.00		14 Joint or Infill		15 Consolidation Code		16 Order No.			

NO ALLOWABLE WILL BE ASSIGNED TO THIS COMPLETION UNTIL ALL INTEREST HAVE BEEN CONSOLIDATED  
OR A NON-STANDARD UNIT HAS BEEN APPROVED BY THE DIVISION

14		5149 (R)		17		5197 (R)		17 OPERATOR CERTIFICATION I hereby certify that the information contained herein is true and complete to the best of my knowledge and belief.  Gail M. Jefferson Signature Gail M. Jefferson Printed Name Sr. Admin. Staff Asst. Title 9/8/98 Date	
5143 (R)		17		1770'		5197 (R)		18 SURVEYOR CERTIFICATION I hereby certify that the well location shown on this plat was plotted from field notes of actual surveys made by me or under my supervision, and that the same is true and correct to the best of my belief. August 26, 1998 Date of Survey Signature and Seal of Professional Surveyor  7016 Certificate Number	
		5172 (R)							

(R) - BLM Record