

UNITED STATES
DEPARTMENT OF THE INTERIOR
BUREAU OF LAND MANAGEMENT

APPLICATION FOR PERMIT TO DRILL, DEEPEN, OR PLUG BACK

1a. Type of Work DRILL ✓	5. Lease Number SF-078487
1b. Type of Well GAS	Unit Reporting Number
2. Operator BURLINGTON RESOURCES Oil & Gas Company	6. If Indian, All. or Tribe
3. Address & Phone No. of Operator PO Box 4289, Farmington, NM 87499 (505) 326-9700	7. Unit Agreement Name
4. Location of Well 900' FNL, 855' FEL Latitude 36° 45.6, Longitude 107° 40.5	8. Farm or Lease Name Hill SRC
	9. Well Number 6R
	10. Field, Pool, Wildcat Blanco Pictured Cliffs
	11. Sec., Twn, Rge, Mer. (NMPM) A Sec. 4, T-29-N, R-8-W API # 30-045-30143
14. Distance in Miles from Nearest Town 4 miles from Navajo City	12. County San Juan
	13. State NM
15. Distance from Proposed Location to Nearest Property or Lease Line 855'	
16. Acres in Lease	17. Acres Assigned to Well 164.58 NE/4
18. Distance from Proposed Location to Nearest Well, Drlg, Compl, or Applied for on this Lease 1000'	
19. Proposed Depth 3265'	20. Rotary or Cable Tools Rotary
21. Elevations (DF, FT, GR, Etc.) 6365' GL	22. Approx. Date Work will Start DRILLING OPERATIONS AUTHORIZED ARE SUBJECT TO COMPLIANCE WITH ATTACHED "GENERAL REQUIREMENTS"
23. Proposed Casing and Cementing Program See Operations Plan attached	
24. Authorized by: <u>Deanna Cale</u> Regulatory/Compliance Administrator	<u>1-18-00</u> Date

PERMIT NO. _____ APPROVAL DATE _____
APPROVED BY /s/ Charlie Beecham TITLE _____ DATE MAY 12 2000

Archaeological Report to be submitted

Threatened and Endangered Species Report to be submitted

NOTE: This format is issued in lieu of U.S. BLM Form 3160-3

Title 18 U.S.C. Section 1001, makes it a crime for any person knowingly and willfully to make to any department or agency of the United States any false, fictitious or fraudulent statements or presentations as to any matter within its jurisdiction.

NMOCD

District I
PO Box 1980, Hobbs, NM 88241-1980

District II
PO Drawer 00, Artesia, NM 88211-0719

District III
1000 Rio Brazos Rd., Aztec, NM 87410

District IV
PO Box 2088, Santa Fe, NM 87504-2088

State of New Mexico
Energy, Minerals & Natural Resources Department

Form C-102
Revised February 21, 1994

Instructions on back
Submit to Appropriate District Office
State Lease - 4 Copies
Fee Lease - 3 Copies

OIL CONSERVATION DIVISION
PO Box 2088
Santa Fe, NM 87504-2088

☐ AMENDED REPORT

WELL LOCATION AND ACREAGE DEDICATION PLAT

*API Number 30-045-30143		*Pool Code 72359	*Pool Name Blanco Pictured Cliffs
*Property Code 18542	*Property Name HILL SRC		*Well Number 6R
*GRID No. 14538	*Operator Name BURLINGTON RESOURCES OIL & GAS COMPANY		*Elevation 6365'

¹⁰ Surface Location

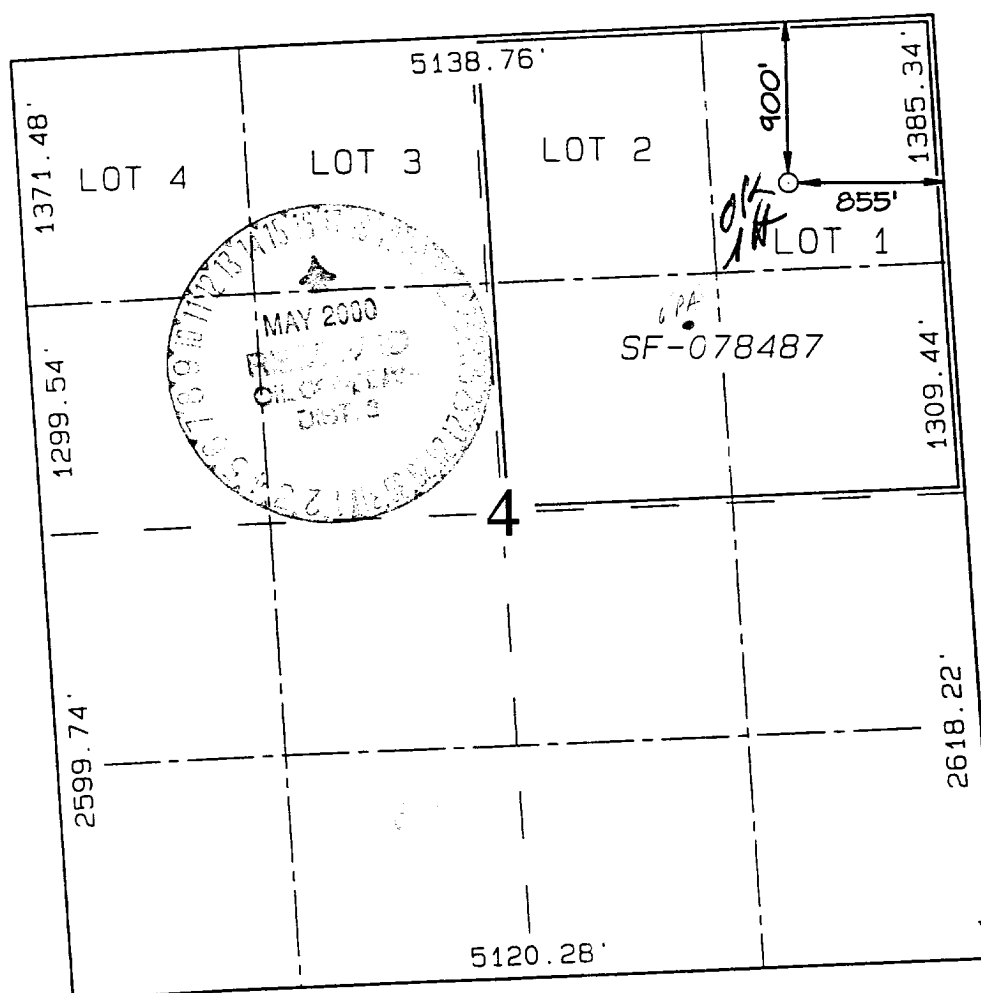
UL or lot no.	Section	Township	Range	Lot Idn	Feet from the	North/South line	Feet from the	East/West line	County
A	4	29N	8W		900	NORTH	855	EAST	SAN JUAN

¹¹ Bottom Hole Location If Different From Surface

UL or lot no.	Section	Township	Range	Lot Idn	Feet from the	North/South line	Feet from the	East/West line	County

¹² Dedicated Acres NE/164.58	¹³ Joint or Infill	¹⁴ Consolidation Code	¹⁵ Order No.
--	-------------------------------	----------------------------------	-------------------------

NO ALLOWABLE WILL BE ASSIGNED TO THIS COMPLETION UNTIL ALL INTERESTS HAVE BEEN CONSOLIDATED
OR A NON-STANDARD UNIT HAS BEEN APPROVED BY THE DIVISION



¹⁷ OPERATOR CERTIFICATION

I hereby certify that the information contained herein is true and complete to the best of my knowledge and belief.

Peggy Cole
Signature

Peggy Cole
Printed Name

Regulatory Administrator
Title

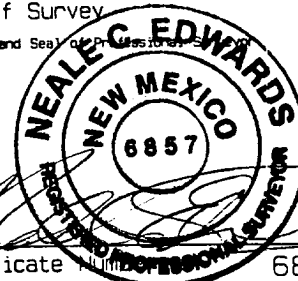
1-18-00
Date

¹⁸ SURVEYOR CERTIFICATION

I hereby certify that the well location shown on this plat was plotted from field notes of actual surveys made by me or under my supervision and that the same is true and correct to the best of my belief.

DECEMBER 17, 1999
Date of Survey

Signature and Seal of Professional Surveyor



Certificate Number 6857

Hill SRC #6R

Cementing:

7" surface casing - cement with 46 sx Class "B" cement with 1/2# flocele/sx and 3% calcium chloride (54 cu.ft. of slurry, 200% excess to circulate to surface). WOC 8 hrs. Test casing to 600 psi for 30 minutes.

4 1/2" production casing - Lead w/190 sx Class "B" w/3% sodium metasilicate, 1/2 pps cellophane and 7 pps gilsonite. Tail w/90 sx 50/50 Class "B" Poz w/2% gel, 1/2 pps flocele, and 10 pps gilsonite, 2% calcium chloride (670 cu.ft. of slurry, 100% excess to circulate to surface). WOC 8 hrs. If cement does not circulate to surface, a CBL will be run during completion to determine TOC.

BOP and tests:

Surface to TD - 11" 2000 psi (minimum double gate BOP stack (Reference Figure #1 and #2). Prior to drilling out surface casing, test rams to 600 psi/30 min.

Completion - 6" 2000 psi (minimum) double gate BOP stack (Reference Figure #2). Prior to completion operations, test rams and casing to 2000 psi/15 min.

From surface to TD - choke manifold (Reference Figure #3).

Pipe rams will be actuated to least once each day and blind rams actuated once each trip to test proper functioning. An upper kelly cock valve with handle and drill string safety valves to fit each drill string will be maintained and available on the rig floor.

Additional information:

- * The Pictured Cliffs formation will be completed.
- * Anticipated pore pressure for the Pictured Cliffs is 600 psi.
- * This gas is dedicated.
- * The northeast quarter of section 4 is dedicated to the Pictured Cliffs.
- * New casing will be utilized.

Steve Capbell
Drilling Engineer

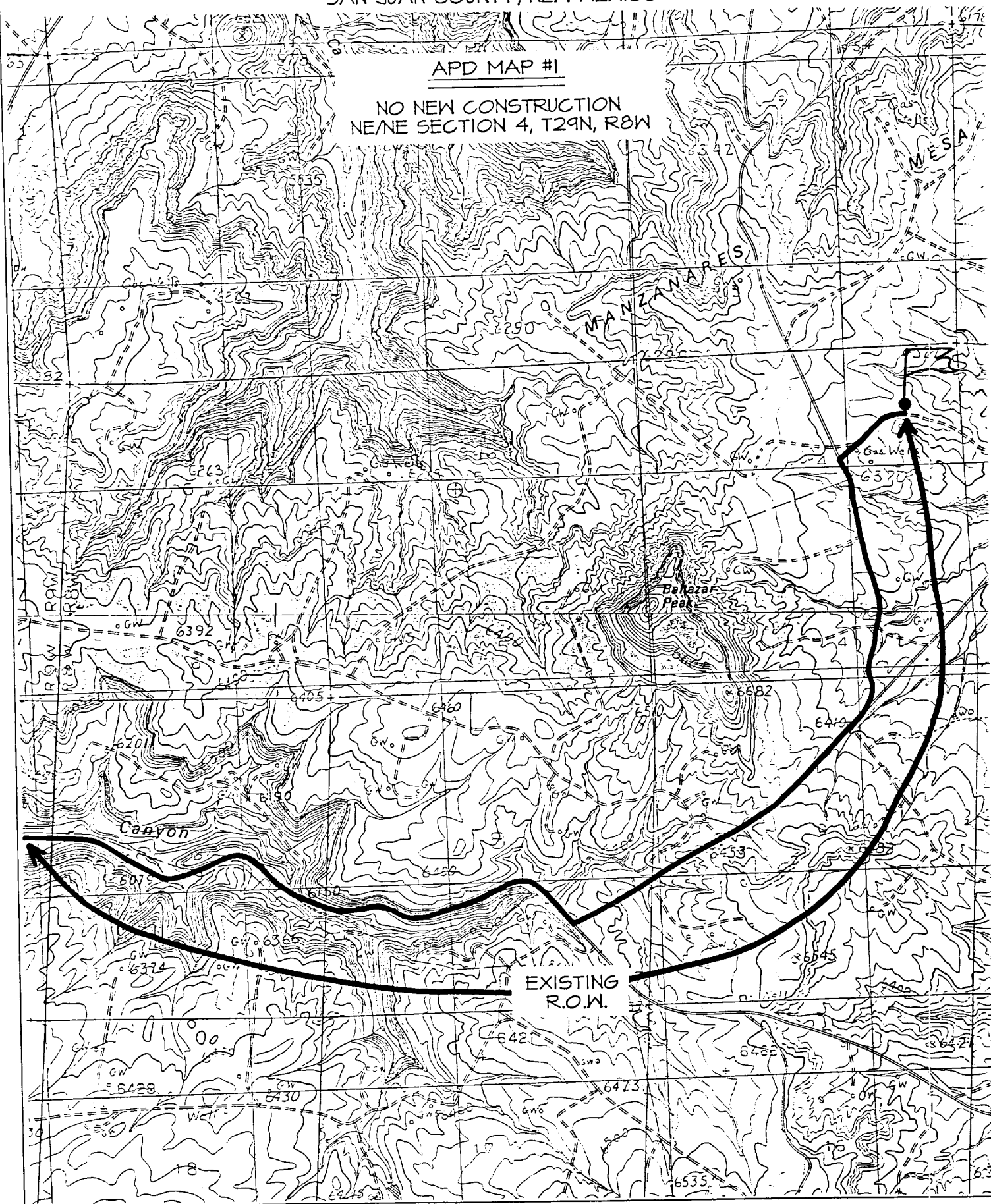
1/18/2000
Date

BURLINGTON RESOURCES OIL & GAS COMPANY HILL SRC #6R

900' FNL & 855' FEL, SECTION 4, T29N, R8W, N.M.P.M.
SAN JUAN COUNTY, NEW MEXICO

APD MAP #1

NO NEW CONSTRUCTION
NE/NE SECTION 4, T29N, R8W



OPERATIONS PLAN

Well Name: Hill SRC #6R
Location: 900' FNL, 855' FEL Section 4, T-29-N, R-8-W
San Juan County, New Mexico
Latitude 36° 45.6', Longitude 107° 40.5'
Formation: Blanco Pictured Cliffs
Elevation: 6365' GL

Formation:	Top	Bottom	Contents
Surface	Nacimiento	1972'	
Ojo Alamo	1972'	2133'	aquifer
Kirtland	2133'	2623'	
Fruitland	2623'	3065'	gas
Pictured Cliffs	3065'		gas
Total Depth	3265'		

Logging Program: cased hole: GR/CCL

Coring Program: none

Mud Program:

<u>Interval</u>	<u>Type</u>	<u>Weight</u>	<u>Vis.</u>	<u>Fluid Loss</u>
0- 120'	Spud	8.4-9.0	40-50	no control
120-3265' /	LSND	8.4-9.0	40-60	no control

Casing Program (as listed, equivalent, or better):

<u>Hole Size</u>	<u>Depth Interval</u>	<u>Csq. Size</u>	<u>Wt.</u>	<u>Grade</u>
8 3/4"	0 - 120'	7"	20.0#	K-55
6 1/4"	0 - 3265' /	4 1/2"	10.5#	K-55

Tubing Program: - 0' 0 3265' / 2 3/8" 4.70# EUE

Float Equipment: 7" surface casing - saw tooth guide shoe.
Centralizers will be run in accordance with Onshore Order #2.

4 1/2" production casing - float shoe on bottom. Three centralizers run every other joint above shoe. Seven centralizers run every 3rd joint to the base of the Ojo Alamo @ 2133'. Two turbolizing type centralizers - one below and one into the base of the Ojo Alamo @ 2133'. Standard centralizers thereafter every fourth joint up to the base of the surface pipe.

Wellhead Equipment: 7" x 4 1/2" 2000 psi screw on independent wellhead.