

UNITED STATES
DEPARTMENT OF THE INTERIOR
BUREAU OF LAND MANAGEMENT

FORM APPROVED
OMB No. 1004-0136
Expires November 30, 2000

APPLICATION FOR PERMIT TO DRILL OR REENTER

1a. Type of Work: <input checked="" type="checkbox"/> DRILL <input type="checkbox"/> REENTER		5. Lease Serial No. NMSF - 078596 - A
1b. Type of Well: <input type="checkbox"/> Oil Well <input checked="" type="checkbox"/> Gas Well <input type="checkbox"/> Other <input type="checkbox"/> Single Zone <input checked="" type="checkbox"/> Multiple Zone		6. If Indian, Allottee or Tribe Name
2. Name of Operator AMOCO PRODUCTION COMPANY		7. If Unit or CA Agreement, Name and No.
Contact: MARY CORLEY E-Mail: corley@bp.com		8. Lease Name and Well No. FLORANCE AB 31M
3a. Address P.O. BOX 3092 HOUSTON, TX 77253	3b. Phone No. (include area code) Ph: 281.366.4491 Fx: 281.366.0700	9. API Well No. 30-045-30899
4. Location of Well (Report location clearly and in accordance with any State requirements. *) At surface SWNE Tract G 1840FNL 1695FEL 34.44500 N Lat, 107.37500 W Lon At proposed prod. zone		10. Field and Pool, or Exploratory BASIN DAKOTA/BLANCO MESAVER
14. Distance in miles and direction from nearest town or post office* 29 MILES BLOOMFIELD, NEW MEXICO		11. Sec., T., R., M., or Blk. and Survey or Area G Sec 12 T29N R8W Mer NMP
15. Distance from proposed location to nearest property or lease line, ft. (Also to nearest drig. unit line, if any) 945' FWL	16. No. of Acres in Lease 320.00	12. County or Parish SAN JUAN
18. Distance from proposed location to nearest well, drilling, completed, applied for, on this lease, ft.	19. Proposed Depth 7549 MD	13. State NM
21. Elevations (Show whether DF, KB, RT, GL, etc.) 6220 GL	22. Approximate date work will start 02/01/2001	17. Spacing Unit dedicated to this well 320.00
23. Estimated duration		20. BLM/BIA Bond No. on file

24. Attachments

The following, completed in accordance with the requirements of Onshore Oil and Gas Order No. 1, shall be attached to this form:

- | | |
|---|--|
| 1. Well plat certified by a registered surveyor. | 4. Bond to cover the operations unless covered by an existing bond on file (see Item 20 above). |
| 2. A Drilling Plan. | 5. Operator certification |
| 3. A Surface Use Plan (if the location is on National Forest System Lands, the SUPO shall be filed with the appropriate Forest Service Office). | 6. Such other site specific information and/or plans as may be required by the authorized officer. |

25. Signature (Electronic Submission)	Name (Printed/Typed) MARY CORLEY	Date 11/01/2001
Title AUTHORIZED REPRESENTATIVE		
Approved by (Signature) JL	Name (Printed/Typed)	Date 3-11-01
Title	Office	

Application approval does not warrant or certify the applicant holds legal or equitable title to those rights in the subject lease which would entitle the applicant to conduct operations thereon.
Conditions of approval, if any, are attached.

Title 18 U.S.C. Section 1001 and Title 43 U.S.C. Section 1212, make it a crime for any person knowingly and willfully to make to any department or agency of the United States any false, fictitious or fraudulent statements or representations as to any matter within its jurisdiction.

Additional Operator Remarks (see next page)

Electronic Submission #8415 verified by the BLM Well Information System
For AMOCO PRODUCTION COMPANY, sent to the Farmington
Committed to AFMSS for processing by Maurice Johnson on 11/08/2001 ()

This submission is subject to BLM review and
procedural review pursuant to 43 CFR 3165.3
and appeal pursuant to 43 CFR 3165.4.

ALL INFORMATION CONTAINED HEREIN IS UNCLASSIFIED
EXCEPT TO COMPLIANCE WITH ATTACHED
"REVIEW REQUIREMENTS"

** ORIGINAL ** ORIGINAL ** ORIGINAL ** ORIGINAL ** ORIGINAL ** ORIGINAL ** ORIGINAL **

NMOCU

District I
PO Box 1980, Hobbs NM 88241-1980
District II
PO Drawer KK, Artesia, NM 87211-0719
District III
1000 Rio Brazos Rd., Aztec, NM 87410
District IV
PO Box 2088, Santa Fe, NM 87504-2088

State of New Mexico
Energy, Minerals & Natural Resources Department
OIL CONSERVATION DIVISION
PO Box 2088
Santa Fe, NM 87504-2088

Form C-102
Revised February 21, 1994
Instructions on back
Submit to Appropriate District Office
State Lease - 4 Copies
Fee Lease - 3 Copies

☐ AMENDED REPORT

WELL LOCATION AND ACREAGE DEDICATION PLAT

¹ API Number 30-045-30899		¹ Pool Code 71599 & 72319		¹ Pool Name BASIN DAKOTA & BLANCO MESAVERDE	
² Property Code 00521		³ Property Name FLORANCE AB			⁴ Well Number # 31M
⁵ OGRID No. 000778		⁶ Operator Name AMOCO PRODUCTION COMPANY			⁷ Elevation 6220

¹⁰ Surface Location

UL or Lot No.	Section	Township	Range	Lot Idn	Feet from the	North/South line	Feet from the	East/West line	County
G	12	29 N	8 W		1840	NORTH	1695	EAST	SAN JUAN

¹¹ Bottom Hole Location If Different From Surface

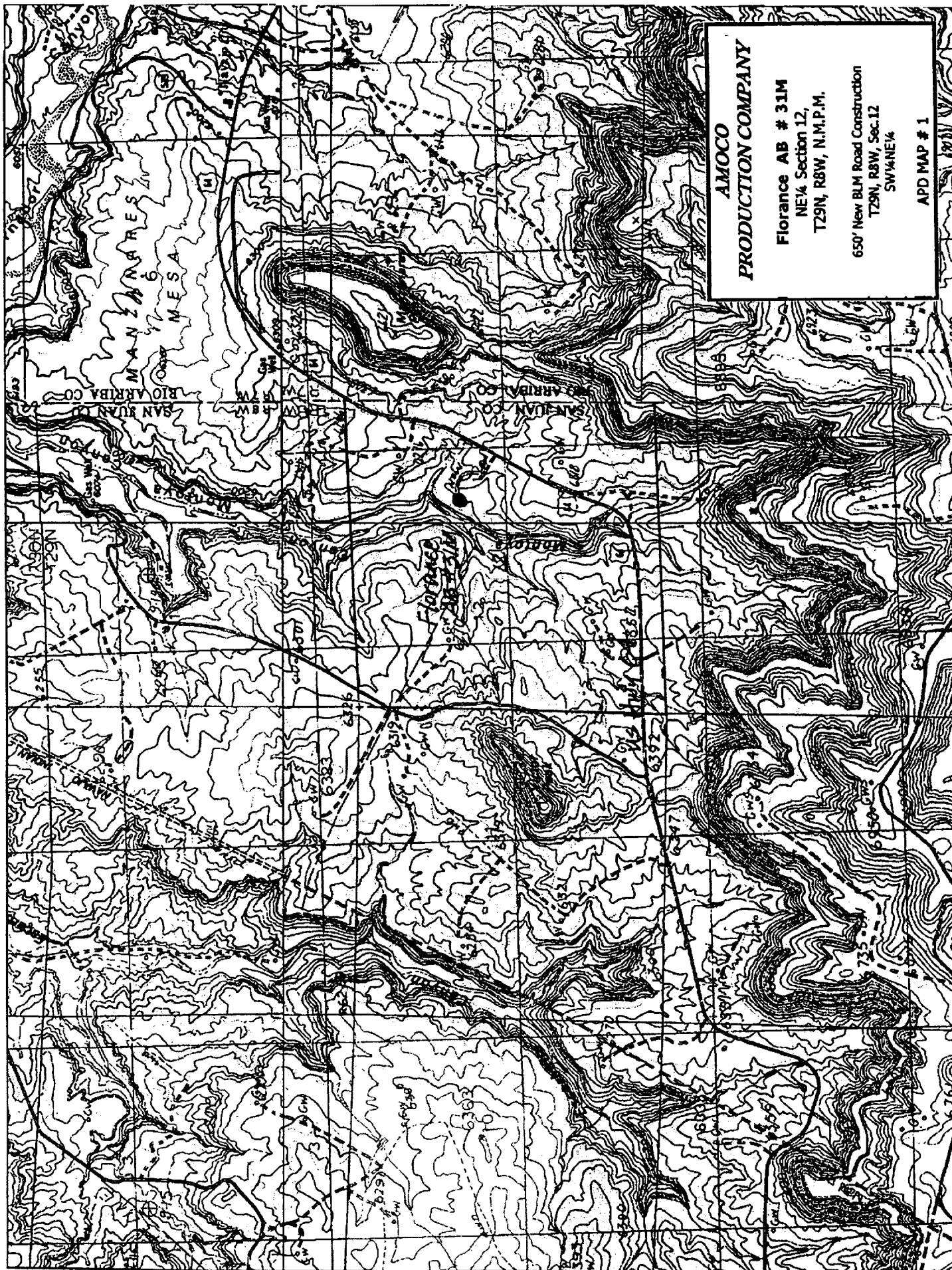
⁷ UL or lot no.	Section	Township	Range	Lot Idn	Feet from the	North/South line	Feet from the	East/West line	County

¹² Dedicated Acres	¹³ Joint or Infill	¹⁴ Consolidation Code	¹⁵ Order No.
320			

NO ALLOWABLE WILL BE ASSIGNED TO THIS COMPLETION UNTIL ALL INTERESTS HAVE BEEN CONSOLIDATED
OR A NON-STANDARD UNIT HAS BEEN APPROVED BY THE DIVISION

<div data-bbox="136 934 1071 1900"> </div>	<p>17 OPERATOR CERTIFICATION I hereby certify that the information contained herein is true and complete to the best of my knowledge and belief.</p> <p>Signature: <i>Mary Cooley</i> Printed Name: <i>MARY COOLEY</i> Title: <i>SE Regulatory Analyst</i> Date: <i>10-31-01</i></p>
	<p>18 SURVEYOR CERTIFICATION I hereby certify that the well location shown on this plat was plotted from field notes of actual surveys made by me or under my supervision, and that the same is true and correct to the best of my belief.</p> <p>October 23, 2001 Date of Survey</p> <p>Signature and Seal of Professional Surveyor <i>GARY D. VANN</i> 7016 Certificate Number</p>

(R) - BLM Record



**AMOCO PRODUCTION COMPANY
DRILLING AND COMPLETION PROGRAM**

Prospect Name: Florance AB
Lease: FLORANCE AB
County: San Juan
State: New Mexico
Date: November 1, 2001

Well No: 31M
Surface Location: 12-29N-8W, 1840 FNL, 1695 FEL
Field: Blanco Mesaverde/Basin Dakota

OBJECTIVE: Drill 400' below the base of the Greenhorn Limestone, set 4 1/2" production casing, Stimulate CH, MF, PL and DK intervals

METHOD OF DRILLING		APPROXIMATE DEPTHS OF GEOLOGICAL MARKER				
TYPE OF TOOLS	DEPTH OF DRILLING	Estimated GL: 6220		Estimated KB: 6234		
Rotary	0 - TD	MARKER		SUBSEA	MEAS. DEPTH	
LOG PROGRAM TYPE <u>OPEN HOLE</u> GR-Induction Density/Neutron <u>CASED HOLE</u> GR-CCL-TDT CBL	DEPTH INVERAL TD to 7" shoe TD to 7" shoe TDT – TD to 7" shoe Identify 4 ½" cement top	Ojo Alamo		4327	1907	
		Fruitland Coal	*	3517	2717	
		Pictured Cliffs	*	3255	2979	
		Lewis Shale	#	3159	3075	
		Cliff House	#	1613	4621	
		Menefee Shale	#	1461	4773	
		Point Lookout	#	1089	5145	
		Mancos		826	5408	
		Greenhorn		-915	7149	
		Bentonite Marker		-968	7202	
REMARKS: - Please report any flares (magnitude & duration).		Two Wells	#	-1023	7257	
		Dakota MB	#	-1138	7372	
		Burro Canyon	*	-1173	7407	
		Morrison	*	-1138		
		TOTAL DEPTH		-1173	7549	
		# Probable completion interval			* Possible Pay	
		DRILL CUTTING SAMPLES		DRILLING TIME		
		FREQUENCY	DEPTH	FREQUENCY	DEPTH	
		10 feet	Production hole	Geolograph	0-TD	
		SPECIAL TESTS TYPE None				
REMARKS:						

MUD PROGRAM:					
Approx. Interval	Type Mud	Weight, #/ga	Vis, sec/qt	W/L cc's/30 min	Other Specification
0 - 200	Spud	8.6-9.2			
200 - 3175 (1)	Water/LSND	8.6-9.2		<6	
3175 - 7549	Gas/Air/N2/Mist	Volume sufficient to maintain a stable and clean wellbore			

REMARKS:
 (1) The hole will require sweeps to keep unloaded while fresh water drilling. Let hole conditions dictate frequency.

CASING PROGRAM: (Normally, tubular goods allocation letter specifies casing sizes to be used. Hole sizes will be governed by Contract)						
Casing String	Estimated Depth	Casing Size	Grade	Weight	Hole Size	Landing Pt, Cmt, Etc.
Surface/Conductor	200	9 5/8"	H-40 ST&C	32#	12.25"	1
Intermediate 1	3175	7"	J/K-55 ST&C	20#	8.75"	1,2
Production	7549	4 1/2"	J-55	11.6#	6.25"	3

REMARKS:
 (1) Circulate Cement to Surface
 (2) Set casing 100' into Lewis Shale
 (3) Bring cement 100' above 7" shoe

CORING PROGRAM:
 None

COMPLETION PROGRAM:
 Rigless, 4-6 Stage Limited Entry Hydraulic Frac

GENERAL REMARKS:
 Notify BLM/NMOCDD 24 hours prior to Spud, BOP testing, and Casing and Cementing.

Form 46 Reviewed by: _____ Logging program reviewed by: N/A

PREPARED BY:	APPROVED:	DATE:	
HGJ/MNP		30 October, 2001	
Form 46 12-00 MNP		Version 1.0	

Amoco Production Company

BOP Pressure Testing Requirements

Well Name: Florance AB
County: San Juan

31M
State: New Mexico

Formation	TVD	Anticipated Bottom Hole Pressure	Maximum Anticipated Surface Pressure **
Ojo Alamo	1907		
Fruitland Coal	2717		
PC	2979		
Lewis Shale	3075		
Cliff House	4621	500	0
Menefee Shale	4773		
Point Lookout	5145	600	0
Mancos	5408		
Dakota	7257	2600	1410

** Note: Determined using the following formula: $ABHP - (.22 \times TVD) = ASP$

Requested BOP Pressure Test Exception: 3000 psi

SAN JUAN BASIN Dakota Formation Pressure Control Equipment

Background

The objective Dakota formation maximum surface pressure is anticipated to be less than 1000 PSI, based on shut-in surface pressures from adjacent wells. Pressure control equipment working pressure minimum requirements are therefore 2000 PSI. Equipment to be used will conform to API RP-53 (Figure 2.C.2) for a 2000 PSI system per Federal Onshore Order No. 2. Due to available conventional equipment within the area, 3000 PSI rated pressure control equipment will typically be utilized in a double ram type arrangement. Regional drilling rights to be utilized have substructure height limitations which exclude the use of annular preventers; therefore a rotating head will be installed above these rams. This pressure control equipment will be utilized for conventional drilling below conductor to total depth in the Basin Dakota. No abnormal temperature, pressure, or H₂S anticipated.

Equipment Specification

Interval

Below conductor casing to total depth

BOP Equipment

11" nominal or 7 1/16", 3000 PSI
double ram preventer with rotating
head.

All ram type preventers and related control equipment will be hydraulically tested to 250 PSI (low pressure) and 2000 PSI (high pressure), upon installation, following any repairs or equipment replacements, or at 30 day intervals. Accessories to BOP equipment will include kelly cock,