

NEW MEXICO OIL CONSERVATION COMMISSION  
Santa Fe, New Mexico

Form G-101  
Revised (12/1/55)

NOTICE OF INTENTION TO DRILL

Notice must be given to the District Office of the Oil Conservation Commission and approval obtained before drilling or recompletion begins. If changes in the proposed plan are considered advisable, a copy of this notice showing such changes will be returned to the sender. Submit this notice in QUINTUPPLICATE. One copy will be returned following approval. See additional instructions in Rules and Regulations of the Commission. If State Land submit 6 Copies Attach Form G-128 in triplicate to first 3 copies of form G-101

Farmington, New Mexico  
(Place)

April 29, 1960  
(Date)

OIL CONSERVATION COMMISSION  
SANTA FE, NEW MEXICO

Gentlemen:

You are hereby notified that it is our intention to commence the Drilling of a well to be known as

Pan American Petroleum Corporation

(Company, or Operator)

State Gas Unit #YM  
(Lease)

Well No. 1, in 0 The well is located 1045 feet from the South line and 1640 feet from the East line of Section 2, T. 29N, R. 9W, NMPM.

(GIVE LOCATION FROM SECTION LINE) Blanco-Pictured Cliffs Pool, San Juan County

If State Land the Oil and Gas Lease is No. E-5314

If patented land the owner is

Address

We propose to drill well with drilling equipment as follows: Rotary tool to total depth.

The status of plugging bond is

Drilling Contractor Brannon & Murray Drilling Company  
Box 672  
Coleman, Texas

We intend to complete this well in the Pictured Cliffs formation at an approximate depth of 3200 feet.

CASING PROGRAM

We propose to use the following strings of Casing and to cement them as indicated:

Size of Hole	Size of Casing	Weight per Foot	New or Second Hand	Depth	Sacks Cement
12-1/4"	8-5/8"	22.7	New	200'	Circulate
7-7/8"	4-1/2"	9.5	New	3200'	Circulate to surface if possible.

If changes in the above plans become advisable we will notify you immediately.

ADDITIONAL INFORMATION (If recompletion give full details of proposed plan of work.) We propose to drill well with rotary tools to an approximate total depth of 3200' and complete in the Pictured Cliffs formation. Stimulation will be as indicated on reaching total depth. Copies of location plats attached. Logs will be furnished on completion of well.

Approved 5-2, 1960  
Except as follows:

Sincerely yours,

Pan American Petroleum Corporation

ORIGINAL SIGNED BY

By R. M. Bauer, Jr.

Position Area Engineer

Send Communications regarding well to

Name Pan American Petroleum Corporation

Address Box 487, Farmington, New Mexico

Attn: L. O. Speer, Jr.

OIL CONSERVATION COMMISSION

By Emory C. Ames

NEW MEXICO OIL CONSERVATION COMMISSION

Well Location and Acreage Dedication Plat

Section A.

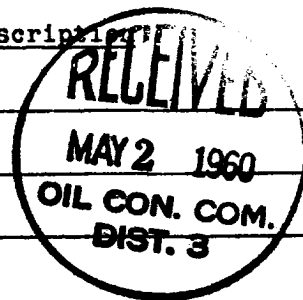
Date April 29, 1960

Operator PAN AMERICAN PETROLEUM CORPORATION Lease State Gas Unit #1  
Well No. I Unit Letter O Section 2 Township 29 North Range 9 West NMPM  
Located 1045' Feet From South Line, 1640' Feet From East Line  
County San Juan G. L. Elevation \* Dedicated Acreage 160 Acres  
Name of Producing Formation Pictured Cliffs Pool Blanco Pictured Cliffs

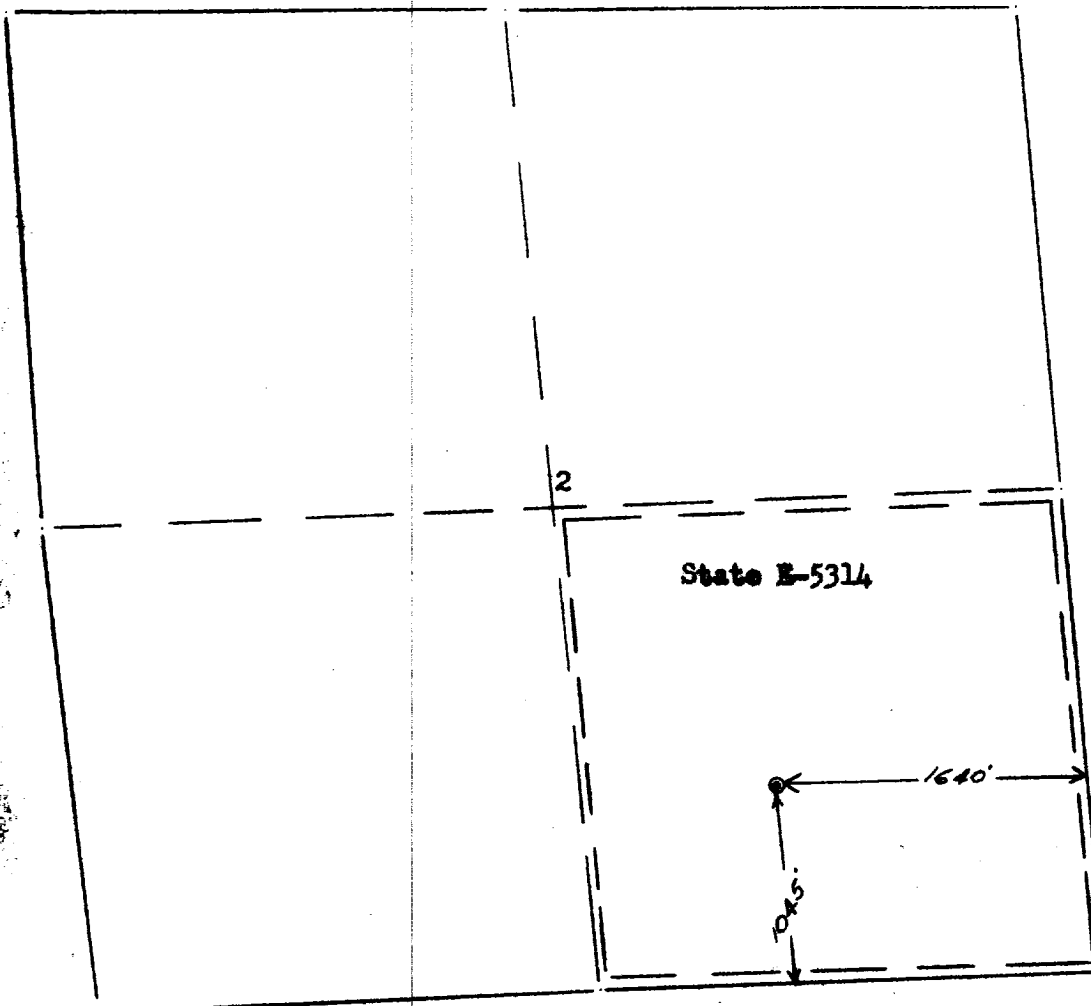
1. Is the Operator the only owner\* in the dedicated acreage outlined on the plat below?  
Yes        No X \* To be reported later
2. If the answer to question one is "no," have the interests of all the owners been consolidated by communitization agreement or otherwise? Yes X No       . If answer is "yes,"  
Type of Consolidation Communitized Acreage
3. If the answer to question two is "no," list all the owners and their respective interests below:

Owner

Land Description



Section. B



Re: U.S.B.L.M. Plat Dated July 2, 1952

This is to certify that the information in Section A above is true and complete to the best of my knowledge and belief.  
Pan American Petroleum Corp.

(Operator)

R.M. Bauer Jr. *RMBauer Jr.*

(Representative)

Box 457  
Farmington, New Mexico

Address

This is to certify that the well location on the plat in Section A is taken from field notes and actual surveys made by me or under my supervision and that the same is true and correct to the best of my knowledge and belief.

Date Surveyed June 10, 1959

*Ernest V. Echshawk*  
Ernest V. Echshawk  
Registered Land Surveyor.

Certificate No. 1545

STATE OF NEW MEXICO		
OIL CONSERVATION COMMISSION		
AZTEC DISTRICT OFFICE		
NUMBER OF COPIES RECEIVED		6
DISTRIBUTION		
SANTA FE		1
FILE		1
U.S.G.S.		2
LAND OFFICE		1
TRANSPORTER	OIL	
	GAS	
PLANNING OFFICE		
OPERATIONS		1