

Lobato GC A#1
Payadd Procedure
T29N-R9W-Sec3
API #: 30-045-08681

1. Check anchors. MIRU workover rig.
2. Kill with 2% KCL water if necessary. Nipple down WH. NU BOPs.
3. Tag for fill and tally OH with 2-3/8" production tubing. Visually inspect tbg while POOH.
4. TIH with bit and scraper for 7" casing to top of liner @ 3725' and scraper for 5" casing to 4428'.
5. RIH with 5" CIBP. Set CIBP at 4428'. Load hole with 2% KCL.
6. Run GR log over Menefee and Lewis Shale interval.
7. RIH with 3-1/8" casing guns with Schlumberger's Prospector, select-fire charge. Perforate Menefee formation (correlate to GR log).
8. RIH with 2-7/8" X 3-1/2" tapered frac string and 5" packer. Set packer at (to be determined from GR log).
9. Spearhead 500 gal 15% HCL, establish injection rate, and proceed with fracture stimulation according to Schlumberger schedule.
10. Flowback frac immediately.
11. Release packer and TOH with frac string and packer. LD frac string.
12. RIH with 5" CIBP. Set CIBP at 3887'.
13. RIH with 3 1/8" casing guns with Schlumberger's Prospector, select-fire charge. Perforate Lewis Shale formation (correlate to GR log).
14. RIH with 3 1/2" frac string and 7" packer. Set packer at (to be determined from GR log). Use 2% KCL-N2 foam in fracture stimulation.
15. Spearhead 500 gal 15% HCL, establish injection rate, and proceed with fracture stimulation according to Schlumberger schedule.
16. Flowback frac immediately.
17. TIH with tubing and bit. Cleanout fill and drill bridge plugs. Cleanout fill to PBTD at 4650'. Blow well dry at PBTD.
18. Remove one joint of tbg and reland 2-3/8" production tubing at 4597'.
19. Swab water from tubing with sandline.
20. ND BOP's. NU WH. Test well for air. Return well to production.

Lobato GC A 1

Sec 3, T29N, R9W

API #: 3004508681

GL: 5643'

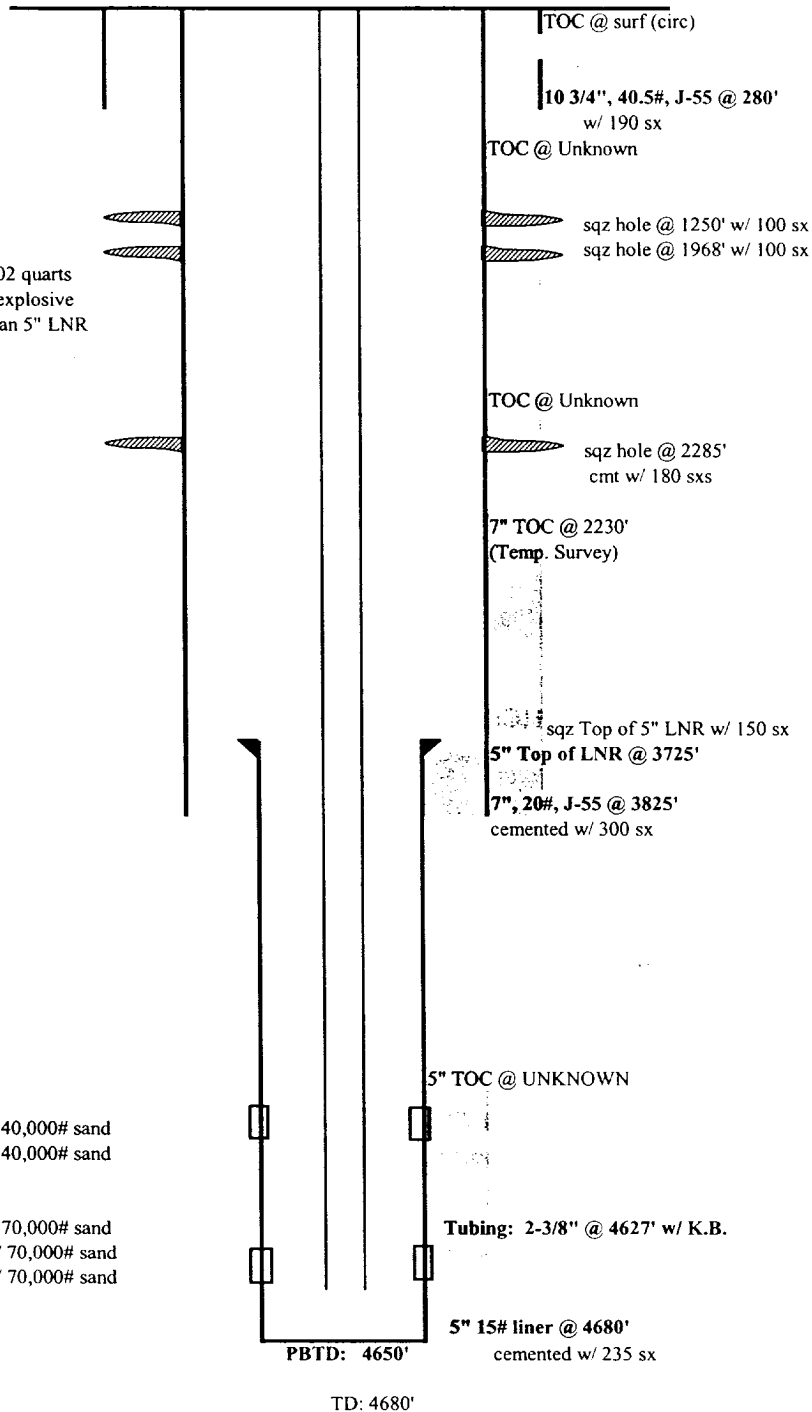
History:

- 1953 completed open hole to TD @ 4600', shot w/ 1502 quarts Hercules slow detonating explosive
- 1957 drilled to TD @ 4680', ran 5" LNR
- 1990 repaired 7"CSG

MV perforations

- 3923 - 3999', 2 SPF, frac'd w/ 40,000# sand
- 4010 - 4060', 2 SPF, frac'd w/ 40,000# sand

- 4512 - 4558', 2 SPF, frac'd w/ 70,000# sand
- 4573 - 4586', 2 SPF, frac'd w/ 70,000# sand
- 4596 - 4630', 2 SPF, frac'd w/ 70,000# sand



updated: 05/08/2002 mnp