

UNITED STATES
DEPARTMENT OF THE INTERIOR
GEOLOGICAL SURVEY

APPLICATION FOR PERMIT TO DRILL, DEEPEN, OR PLUG BACK

1a. TYPE OF WORK

DRILL ☒DEEPEN ☐PLUG BACK ☐

b. TYPE OF WELL

OIL
WELL ☐GAS
WELL ☒

OTHER

SINGLE
ZONE ☒MULTIPLE
ZONE ☐

2. NAME OF OPERATOR

Tenneco Oil Company

3. ADDRESS OF OPERATOR

P. O. Box 1714 - Durango, Colorado

4. LOCATION OF WELL (Report location clearly and in accordance with any State requirements.)*

At surface

950' FNL, 2200' FWL

Unit "C"

At proposed prod. zone

14. DISTANCE IN MILES AND DIRECTION FROM NEAREST TOWN OR POST OFFICE*

15. DISTANCE FROM PROPOSED*

LOCATION TO NEAREST
PROPERTY OR LEASE LINE, FT.
(Also to nearest drig. unit line, if any)

16. NO. OF ACRES IN LEASE

171.99

17. NO. OF ACRES ASSIGNED
TO THIS WELL

171.99

18. DISTANCE FROM PROPOSED LOCATION*
TO NEAREST WELL, DRILLING, COMPLETED,
OR APPLIED FOR, ON THIS LEASE, FT.

19. PROPOSED DEPTH

3000'

20. ROTARY OR CABLE TOOLS

Rotary

21. ELEVATIONS (Show whether DF, RT, GR, etc.)

5833' GR

22. APPROX. DATE WORK WILL START*

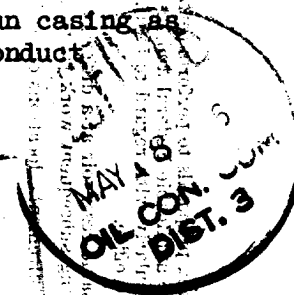
May 26, 1966

23.

PROPOSED CASING AND CEMENTING PROGRAM

| SIZE OF HOLE | SIZE OF CASING | WEIGHT PER FOOT | SETTING DEPTH | QUANTITY OF CEMENT |
|--------------|----------------|-----------------|---------------|-----------------------------|
| 12-1/4" | 8-5/8" | 20# | 150' | Circulate to surface |
| 7-7/8" | 3-1/2" | 7.7# 10R | 3000' | Circulate cement to surface |

We plan to rig up, drill with Rotary to approximate T.D. 3000'. Run casing as shown above. Log. Perforate and frac and install well head and conduct deliverability tests.

U. S. GEOLOGICAL SURVEY
FARMINGTON

IN ABOVE SPACE DESCRIBE PROPOSED PROGRAM: If proposal is to deepen or plug back, give data on present productive zone and proposed new productive zone. If proposal is to drill or deepen directionally, give pertinent data on subsurface locations and measured and true vertical depths. Give blowout preventer program, if any.

24.

SIGNED

Harold C. Nichols
Harold C. Nichols

TITLE

Senior Production Clerk

DATE

May 16, 1966

(This space for Federal or State office use)

PERMIT NO.

APPROVAL DATE

APPROVED BY

CONDITIONS OF APPROVAL, IF ANY:

Distribution:

- 5 - USGS
- 1 - Continental
- 1 - File

*See Instructions On Reverse Side

**NEW MEXICO OIL CONSERVATION COMMISSION
WELL LOCATION AND ACERAGE DEDICATION PLAT**

All distances must be from the outer boundaries of the Section

| | | | | | |
|--|---------------------|-----------------------------|--------------------------|---------------------------|-----------------------|
| Operator TENNECO OIL COMPANY | | | Lease FLORENCE | | Well No. 78 |
| Unit Letter C | Section 1 | Township 29 North | Range 9 West | County San Juan | |

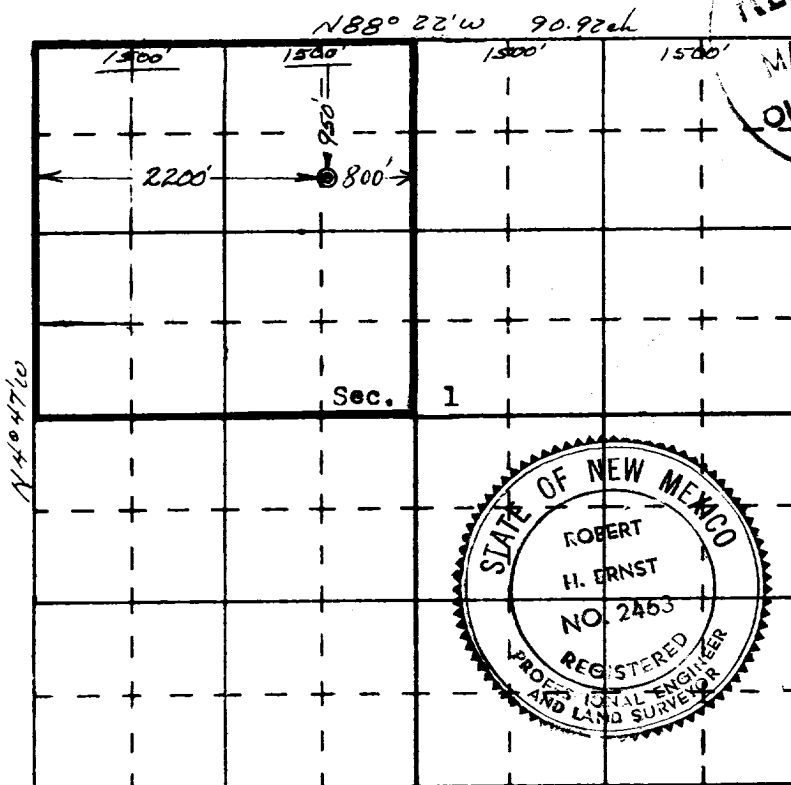
Actual Footage Location of Well:
950 feet from the **North** line and **2200** feet from the **West** line

| | | | | |
|---|--|---------------------------------------|-------------------------------------|----------------------|
| Ground Level Elev. 5833' ungraded | Producing Formation Blanco Pictured Cliffs | Pool Blanco Pictured Cliffs | Dedicated Acreage: 171.99 | NW/4 Acres |
|---|--|---------------------------------------|-------------------------------------|----------------------|

1. Outline the acreage dedicated to the subject well by colored pencil or hachure marks on the plat below.
 2. If more than one lease is dedicated to the well, outline each and identify the ownership thereof (both as to working interest and royalty),
 3. If more than one lease of different ownership is dedicated to the well, have the interests of all owners been consolidated by communization, unitization, force-pooling, etc?
- () Yes () No If answer is "yes," type of consolidation

If answer is "no," list the owners and tract descriptions which have actually consolidated. (Use reverse side of this form if necessary.)

No allowable will be assigned to the well until all interests have been consolidated (by communization, unitization, forced-pooling, or otherwise) or until a non standard unit, eliminating such interests, has been approved by the Commission.



CERTIFICATION

I hereby certify that the information contained herein is true and complete to the best of my knowledge and belief.

Harold C. Nichols
 Name Harold C. Nichols
 Position Senior Production Clerk
 Company Tenneco Oil Company
 Date May 16, 1966

I hereby certify that the well location shown on this plat was plotted from field notes of actual surveys made by me or under my supervision, and that the same is true and correct to the best of my knowledge and belief.

17 April 1966
 Date Surveyed
Robert H. Ernst
 Registered Professional Engineer
 and/or Land Surveyor
Robert H. Ernst
N. Mex. PE & LS 2463
 Certificate No. _____