

NEW MEXICO OIL CONSERVATION COMMISSION

Well Location and Acreage Dedication Plat

Section A.

Date April 13, 1965

Operator PAN AMERICAN PETROLEUM CORPORATION Lease LOBATO GAS UNIT E
 Well No. 1 Unit Letter K Section 3 Township 29 NORTH Range 9 WEST NMPM
 Located 1750 Feet From SOUTH Line, 1450 Feet From WEST Line
 County SAN JUAN G. L. Elevation REPORT LATER Dedicated Acreage 320.60 Acres
 Name of Producing Formation Dakota Pool Basin Dakota

1. Is the Operator the only owner in the dedicated acreage outlined on the plat below?

Yes No X

2. If the answer to question one is "no", have the interests of all the owners been consolidated by communitization agreement or otherwise? Yes X No . If answer is "yes", Type of Consolidation Communitization & Operating agreements being prepared. Pan American owns all acreage in W/2 of Section 3 except 14.68 acres in NE/4 NW/4 which is owned by Tenneco & Continental, both of whom have approved the drilling of the well.

Owner

Land Description

RECEIVED

APR 15 1965

OIL CON. COM.
DIST. 3

Section B.

This is to certify that the information in Section A above is true and complete to the best of my knowledge and belief.

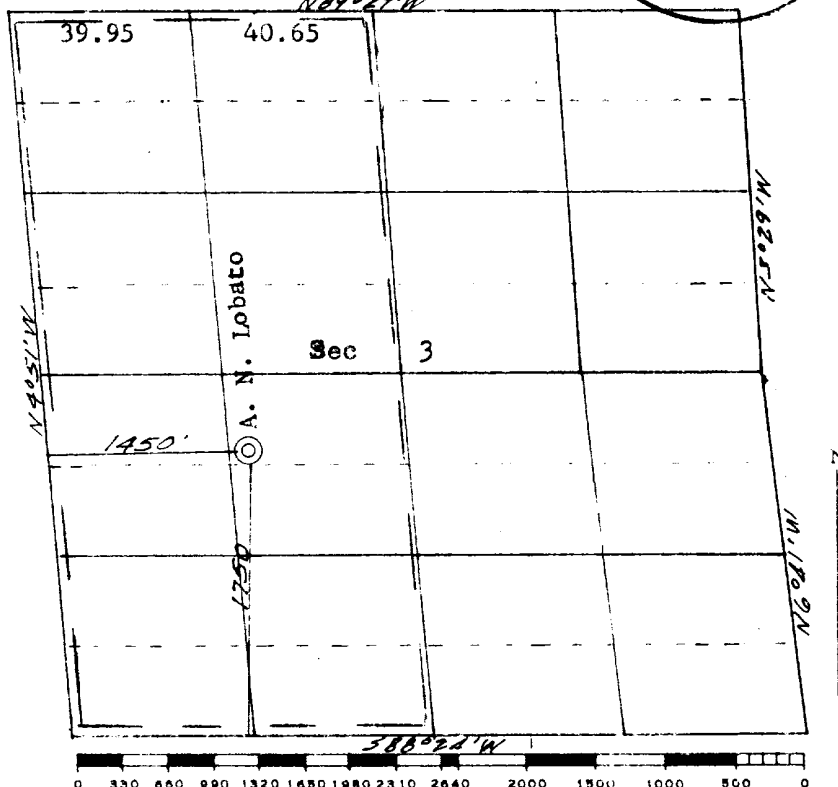
PAN AMERICAN PETROLEUM CORP.

F. H. Hollingsworth (Operator)

F. H. Hollingsworth
(Representative)P. O. Box 480
(Address)

Farmington, New Mexico

Note: All distances must be from outer boundaries of section



Ref: BIM plat dated July 2, 1952.



(Seal)

Farmington, New Mexico

This is to certify that the above plat was prepared from field notes of actual surveys made by me or under my supervision and that the same are true and correct to the best of my knowledge and belief.

Date Surveyed March 25, 1965.

James P. Lease
 Registered Professional Engineer and Land Surveyor
 James P. Lease, N. Mex. Reg. No. 1463
 San Juan Engineering Company

Current Records:

Change To;

BASIN DAKOTA POOL Cont:

Heath Gas Unit G #1
 Heath Gas Unit H #1
 Heath Gas Unit J #1
 Houck C Gas Com #1
 Hubbell Gas Unit B #1
 Hubbell Gas Unit C #1
 Hutton Gas Unit #1
 Jaquez Gas Unit A #3
 Jaquez Gas Unit B #3
 Jaquez Gas Unit D #1
 Jennepah A Gas Com #1
 Jicarilla Gas Unit B #1
 Johnson Gas Unit B #1
 Johnson Gas Unit C #1
 Johnson Gas Unit D #1
 Jones Gas Unit C #1-X
 Keys Gas Unit D #1
 King Gas Unit #1
 Kutz (Deep) D Gas Unit #1
 Lefkovitz Gas Unit B #1
 Likins Gas Unit A #3
 Lillywhite Gas Unit #1
 Lobato Gas Unit E #1
 Maddox Gas Unit C #1
 Marsrow Gas Unit #1
 Martin Gas Unit B #1
 Martin Gas Unit C #1
 Martin Gas Unit E #1
 Martin F Gas Com #1
 Martin G Gas Com #1
 Martinez Gas Unit F #1
 Masden Gas Unit #1
 McDaniel Gas Unit B #1
 McGrady Gas Unit #1
 Miller Gas Unit #1
 Miller Gas Unit B #1
 Morris Gas Unit B #1
 Morris Gas Unit C #1
 Nye Gas Unit B #1
 Pan Amer. Federal Gas Unit B #1
 Richardson Gas Unit B #1
 Roberts Gas Unit B #1
 Rowland Gas Unit #1
 Sammons Gas Unit C #1
 Scott Gas Unit #1
 State Gas Unit BG #1
 State Gas Unit BJ #1
 Stedje Gas Unit #1
 Sullivan Gas Unit C #1
 Sullivan Gas Unit D #1
 Taft Gas Unit #1
 Totah Vista Gas Unit #1
 USA Stanolind A #2
 White Gas Unit #1

N-8-29-9 Heath Gas Com G #1
 F-8-29-9 Heath Gas Com H #1
 G-9-29-9 Heath Gas Com J #1
 G-6-29-9 Houck Gas Com C #1
 M-30-28-10 Hubbell Gas Com B #1
 N-29-28-10 Hubbell Gas Com C #1
 H-6-29-12 Hutton Gas Com #1
 G-5-29-9 Jaquez Gas Com A #3
 K-4-29-9 Jaquez Gas Com B #3
 J-6-29-9 Jaquez Gas Com D #1
 H-36-28-9 Jennepah Gas Com A #1
 G-31-26-5 Jicarilla Gas Com B #1
 H-21-27-10 Johnson Gas Com B #1
 C-7-29-12 Johnson Gas Com C #1
 G-15-30-12 Johnson Gas Com D #1
 N-8-29-11 Jones Gas Com C #1-X
 N-29-29-10 Keys Gas Com D #1
 B-29-30-13 King Gas Com #1
 A-27-28-10 Kutz Deep Gas Com D #1
 A-25-29-10 Lefkovitz Gas Com B #1
 M-34-30-9 Likins Gas Com A #3
 C-13-30-12 Lillywhite Gas Com #1
 K-3-29-9 Lobato Gas Com E #1
 M-27-29-10 Maddox Gas Com C #1
 F-15-29-12 Marsrow Gas Com #1
 G-31-28-10 Martin Gas Com B #1
 K-11-27-10 Martin Gas Com C #1
 L-15-27-10 Martin Gas Com E #1
 E-14-27-10 Martin Gas Com F #1
 B-14-27-10 Martin Gas Com G #1
 L-24-29-10 Martinez Gas Com F #1
 A-28-29-11 Masden Gas Com #1
 H-26-29-10 McDaniel Gas Com B #1
 D-14-27-12 McGrady Gas Com #1
 H-20-30-13 Miller Gas Com #1
 P-20-30-13 Miller Gas Com B #1
 D-10-27-10 Morris Gas Com B #1
 K-26-29-10 Morris Gas Com C #1
 H-7-29-9 Nye Gas Com B #1
 O-31-30-11 Pan American Federal Gas Com B #1
 A-11-27-13 Richardson Gas Com B #1
 A-14-29-13 Roberts Gas Com B #1
 P-25-30-12 Rowland Gas Com #1
 N-7-29-9 Sammons Gas Com C #1
 A-1-30-12 Scott Gas Com #1
 F-2-29-10 State Gas Com BG #1
 C-2-30-13 State Gas Com BJ #1
 F-27-30-12 Stedje Gas Com #1
 N-28-29-10 Sullivan Gas Com C #1
 B-26-29-11 Sullivan Gas Com D #1
 A-14-30-13 Taft Gas Com #1
 M-22-29-13 Totah Vista Gas Com #1
 O-29-31-12 Stanolind A #2
 O-22-29-13 White Gas Com #1

SOUTH BLANCO PICTURED CLIFFS POOL:

Jicarilla Gas Unit A #1 G-31-26-5 Jicarilla Gas Com A #1

BLANCO MESAVERDE POOL:

Archuleta Gas Unit A #1 K-5-29-9 Archuleta Gas Com A #1
 Boyd Gas Unit #1 M-8-31-10 Boyd Gas Com #1
 Canepile Gas Unit #1 N-18-31-10 Canepile Gas Com #1
 Chavez Gas Unit A #1 G-3-29-9 Chavez Gas Com A #1

cc:
 OCC-Santa Fe U.S.G.S.
 File Operator
 El Paso Nat'l Gas Co.
 Southern Union Gas Co.
 Southern Union Gathering
 Pan Am Pipeline Co.
 Plateau, Inc.
 Shell Oil Company
 Four Corners Pipeline
 Graves Oil Company
 Basin Pipeline Co.
 Transwestern Tankers

Effective March 1, 1966
 APPROVED PAN AMERICAN PETROLEUM CORPORATION

BY