

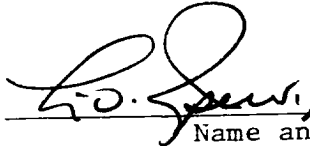
ELLIOTT GAS COM "A" NO. 1A
1800 FNL & 1800 FEL, SECTION 14, T-29-N, R-9-W
SAN JUAN COUNTY, NEW MEXICO

CERTIFICATION

I hereby certify that I, or persons under my direct supervision, have inspected the proposed drillsite and access route; that I am familiar with the conditions which presently exist; that the statements made in this plan are, to the best of my knowledge, true and correct; and, that the work associated with the operations proposed herein will be performed by AMOCO PRODUCTION
COMPANY and its contractors and sub-
contractors in conformity with this plan and the terms and conditions under which it is approved.

JULY 18, 1977

Date

 AREA SUPERINTENDENT
Name and Title

DEVELOPMENT PLAN
ELLIOTT GAS COM "A" NO. 1A
1800 FNL & 1800 FEL, SECTION 14, T-29-N, R-9-W
SAN JUAN COUNTY, NEW MEXICO

The proposed location has some cedar and pinon trees as vegetation. The soil is sandy and rocky. The geological name of the surface formation is the Nacimiento. A road 20' wide and ditched on the upper side will be built to the location. It will be .3 miles long. No construction materials will be used for building the location; dirt will be leveled at the well site. No location cut will be required. Verbal approval of the drill site has been obtained from Mr. Bob Moore, BLM; Mr. Leigh Freeman, USGS; and Ms. Dabney Ford, Archaeologist.

Arrangements are being made to haul water from the irrigation ditch in Blanco. Drilling fluid to 3360' will be a water and Benex and the well will be gas drilled from 3360' to TD (5580'). Upon completion the location will be cleaned up and leveled. Drilling mud and water will be hauled away and the reserve pit backfilled. Attached is the BLM seeding plan to be followed for this well. In addition, all surface equipment will be painted green so as to follow BLM requirements.

There are neither airstrips nor camps in the vicinity.

The estimated tops of important geological formations bearing hydrocarbons are:

<u>FORMATION</u>	<u>DEPTH</u>	<u>ELEVATION</u>
Pictured Cliffs	2958'	+3444'
Cliffhouse	4679'	+1723'
Menefee	4879'	+1523'
Point Lookout	5727'	+ 675

Estimated KB elevation: 6402'

<u>EST. DEPTH</u>	<u>CSG. SIZE</u>	<u>WEIGHT</u>	<u>HOLE SIZE</u>	<u>SACKS CEMENT</u>	<u>- TYPE</u>
250'	9-5/8"	32.3#	12-1/4"	265 - Class "B", 2% CaCl ₂ .	
3360'	7"	20#	8-3/4"	600 - Class "B", 6% Gel, 2# Med. Tuf Plug/sx.	
				50 - Class "B", 2% CaCl ₂ .	
3160-5580'	4-1/2"	10.5#	6-1/4"	225 - Class "B", 50:50 Poz, 6% Gel, 2# Med. Tuf Plug/sx, 0.2% Friction Reducer.	
				75 - Class "B", 50:50 Poz, 6% Gel.	

Amoco's standard blowout prevention will be employed, see attached drawing for blow-out preventer design.

Amoco plans to run the following logs from TD to 3360': Induction-Electric, Density Gamma Ray. No cores or Drill Stem Tests will be taken.

In the past, drilling in this area has shown that no abnormal pressure, temperatures, or hydrocarbon gas will be encountered.

We will start operation as soon as well is permitted, and a three-week operation is anticipated.

BLM SEEDING REQUIREMENTS
IN THE FARMINGTON RESOURCE AREA

1. SEED MIXTURE 2

2. TIME:

All seeding will take place between July 1 and September 15.

3. EQUIPMENT:

Seeding will be done with a disc-type drill with two boxes for various seed sizes. The drill rows will be eight to ten inches apart. The seed will be planted not less than one-half inch deep or more than one inch deep. The seeder will be followed with a drag, packer, or roller to insure uniform coverage of the seed, and adequate compaction. Drilling will be done on the contour where possible, not up and down the slope. Where slopes are too steep for contour drilling, a "cyclone" hand seeder or similar broadcast seeder will be used. Seed will then be covered to the depth described above by whatever means is practical.

4. SPECIES TO BE PLANTED IN POUNDS PURE-LIVE-SEED PER ACRE:

CRESTED WHEATGRASS (Agropyron desertorum) - $3\frac{1}{4}$ lbs.

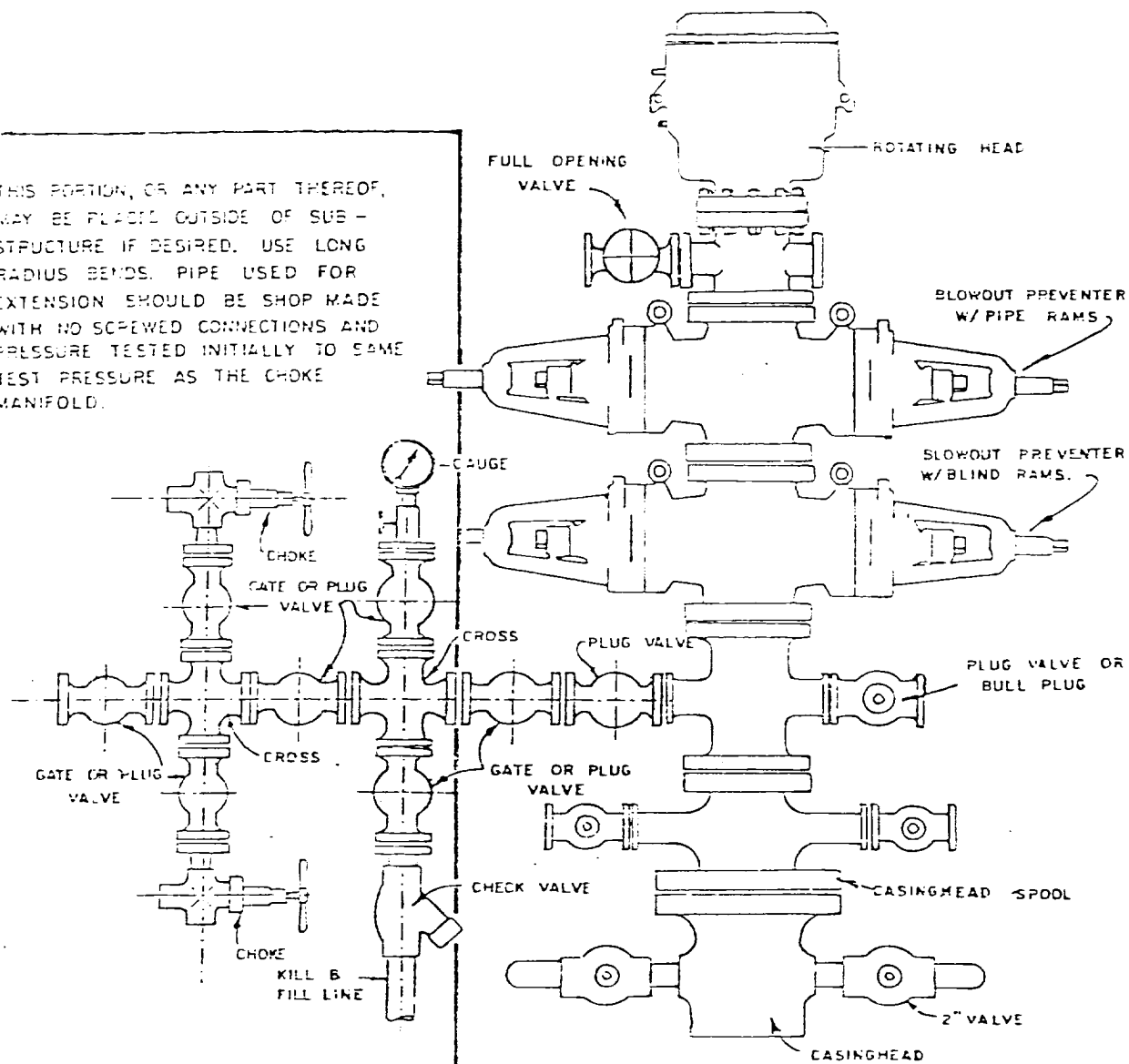
FOURWING SALTBUSH (dewinged) (Atriplex canescens) - $\frac{1}{2}$ lb.

SAND DROPSEED (Sporobolus cryptandrus) - $\frac{3}{4}$ lb.

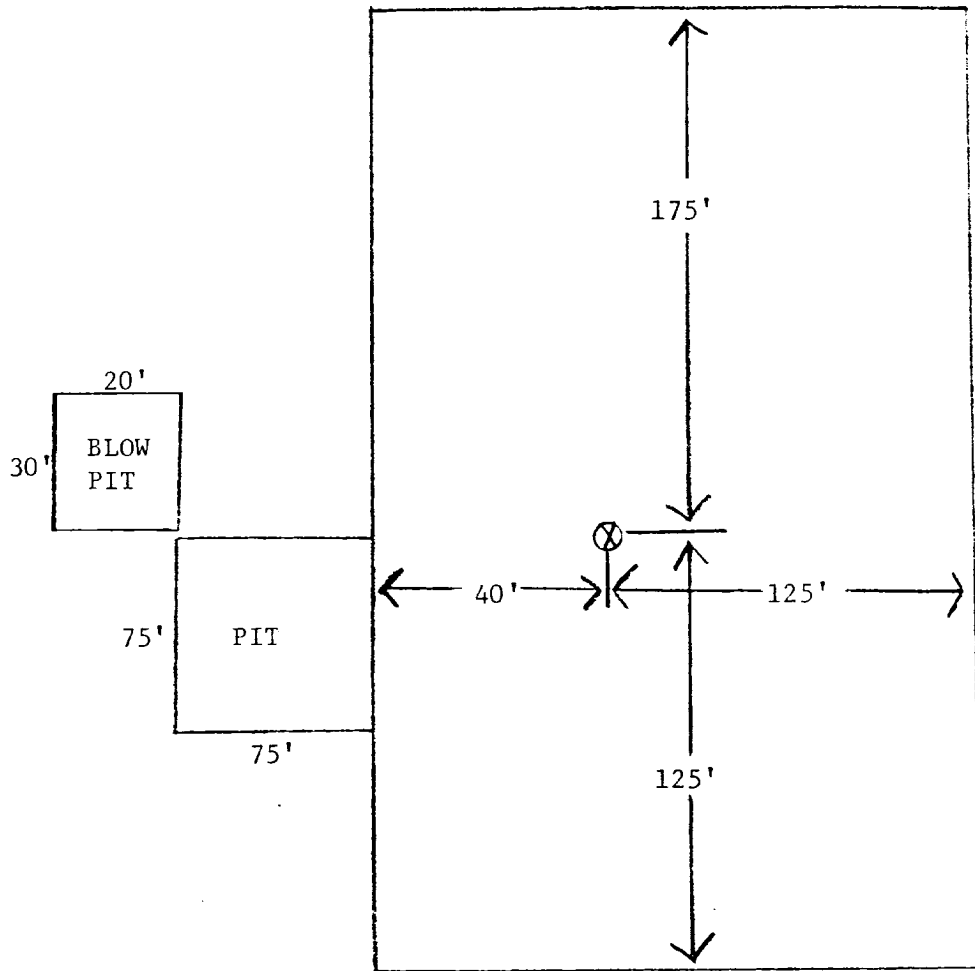
WINTERFAT (Eurotia lanata) - $\frac{1}{2}$ lb.

ALKALI SACATON (Sporobolus airoides) - $\frac{3}{4}$ lb.

THIS PORTION, OR ANY PART THEREOF, MAY BE PLACED OUTSIDE OF SUB-STRUCTURE IF DESIRED. USE LONG RADIUS BENDS. PIPE USED FOR EXTENSION SHOULD BE SHOP MADE WITH NO SCREWED CONNECTIONS AND PRESSURE TESTED INITIALLY TO SAME TEST PRESSURE AS THE CHOKE MANIFOLD.



BLOWOUT PREVENTER HOOKUP



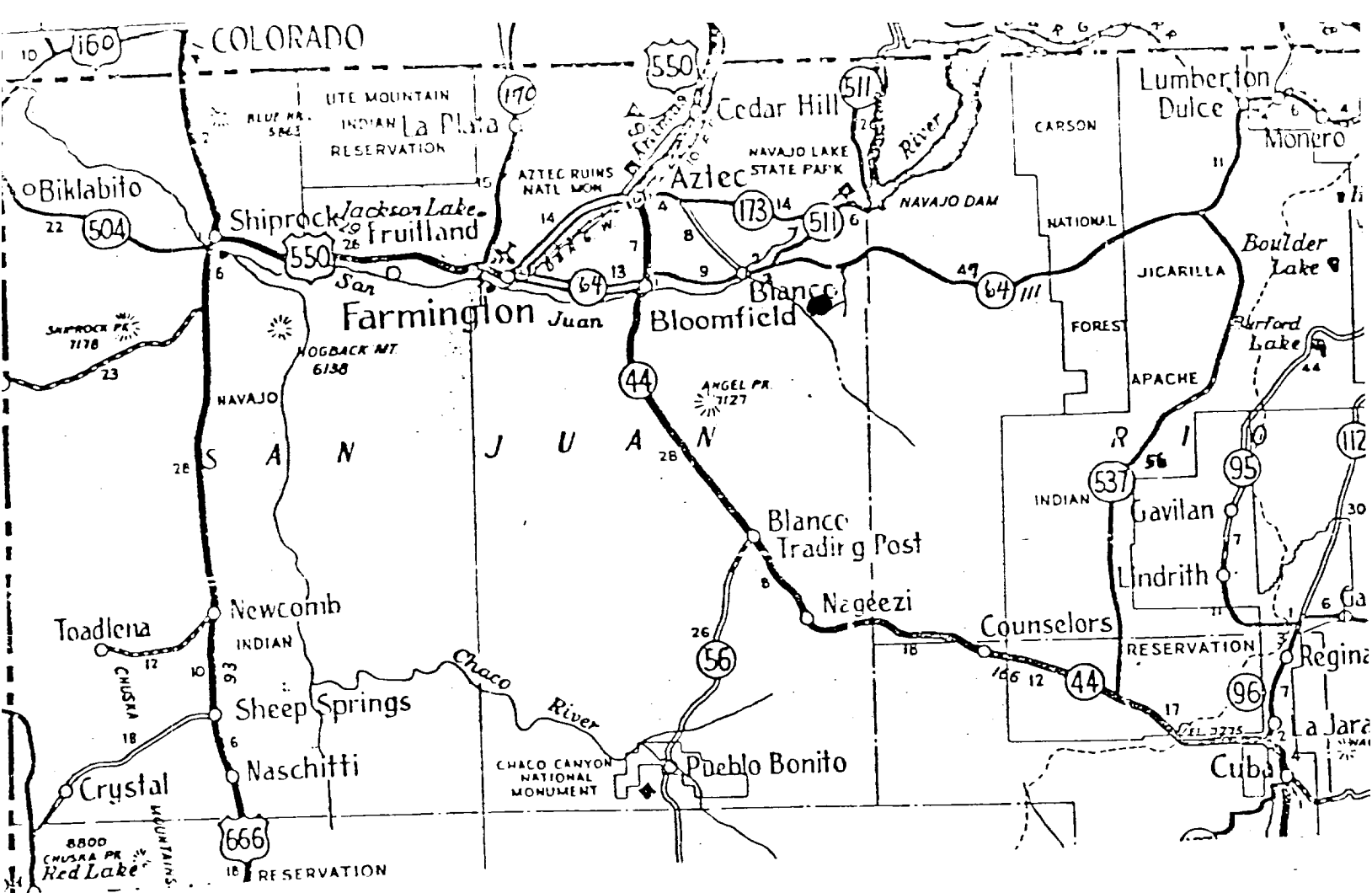
Amoco Production Company

SCALE:

None

Location Diagram: Elliott Gas Com "A" No. 1A
Section 14-T29N-R9W, 1800' FNL & 1800' FEL, SW 1/4 NE 1/4

DRG.
NO.



FARMINGTON AREA TRAFFIC SKETCH
 DENVER DIVISION
 Elliott Gas Com "A" NO. 1-A
 San Juan County, New Mexico
 Amoco WI: 100%

Rail Point Aztec - 27.6 - 11.1

TO DURANGO,
 COLO.

1/2

