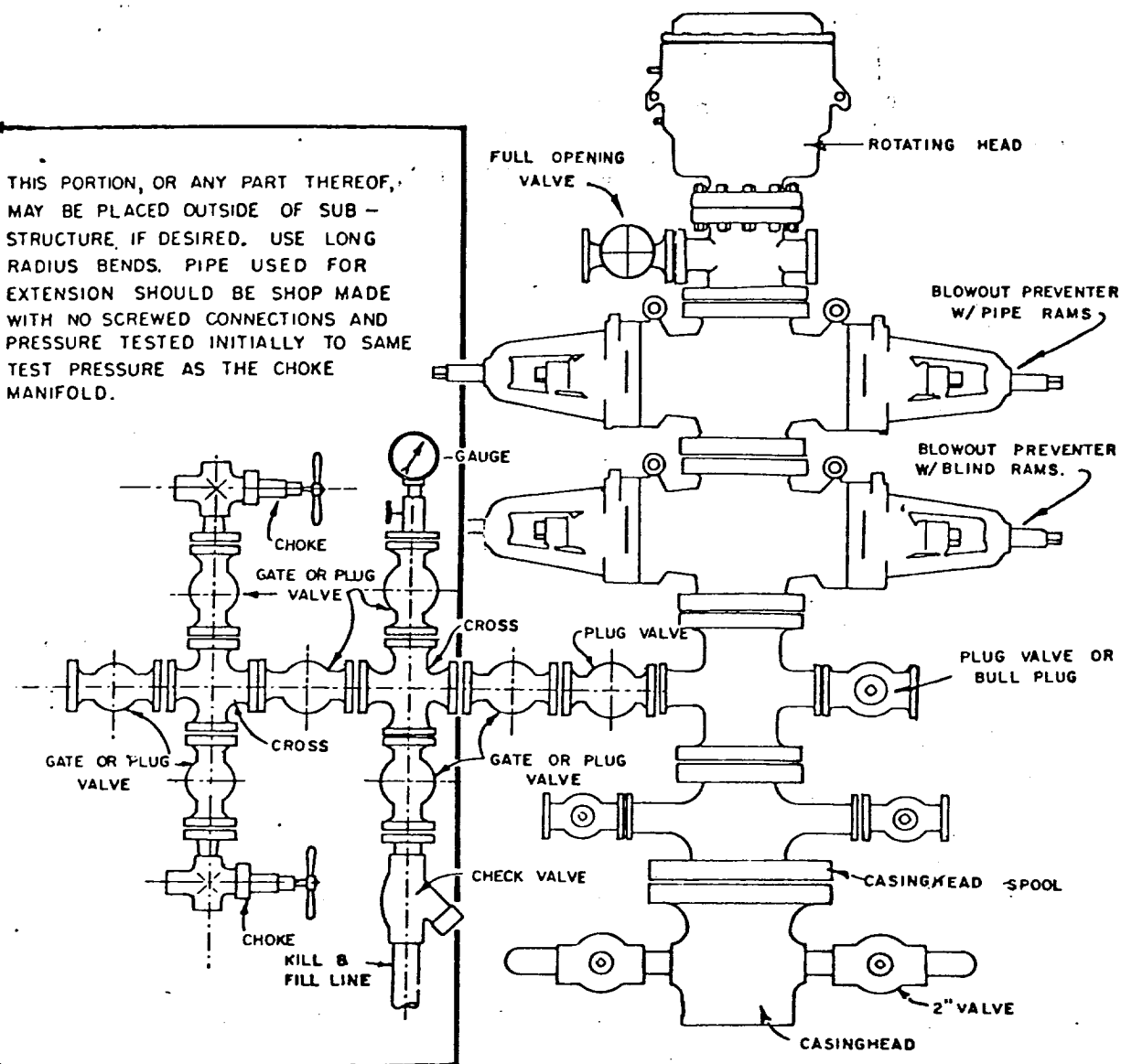


THIS PORTION, OR ANY PART THEREOF, MAY BE PLACED OUTSIDE OF SUB-STRUCTURE, IF DESIRED. USE LONG RADIUS BENDS. PIPE USED FOR EXTENSION SHOULD BE SHOP MADE WITH NO SCREWED CONNECTIONS AND PRESSURE TESTED INITIALLY TO SAME TEST PRESSURE AS THE CHOKE MANIFOLD.



BLOWOUT PREVENTER HOOKUP