

NO. OF COPIES RECEIVED	5
DISTRIBUTION	
SANTA FE	1
FILE	
U.S.G.S.	2
LAND OFFICE	
OPERATOR	1

# NEW MEXICO OIL CONSERVATION COMMISSION

30-045-23724  
Form C-101  
Revised 1-1-65

APPROVAL  
FOR 90 DAYS  
DRILLING

EXPIRES 11-19-79

5A. Indicate Type of Lease
STATE <input type="checkbox"/> FEE <input checked="" type="checkbox"/>

5. State Oil & Gas Lease No.

## APPLICATION FOR PERMIT TO DRILL, DEEPEN, OR PLUG BACK

1a. Type of Work		7. Unit Agreement Name	
b. Type of Well OIL WELL <input type="checkbox"/> GAS WELL <input checked="" type="checkbox"/> OTHER Infill		8. Farm or Lease Name Heath Gas Com "J"	
2. Name of Operator AMOCO PRODUCTION COMPANY		9. Well No. 1E	
3. Address of Operator 501 Airport Drive, Farmington, New Mexico 87401		10. Field and Pool, or Wildcat Basin Dakota	
4. Location of Well UNIT LETTER F LOCATED 1820 FEET FROM THE North LINE AND 1460 FEET FROM THE West LINE OF SEC. 9 TWP. 29N RGE. 9W NMPM		12. County San Juan	
19. Proposed Depth 6893'		19A. Formation DAKOTA	
20. Rotary or C.T. Rotary		21. Elevations (Show whether DF, RT, etc.) 5703' GL	
21A. Kind & Status Plug. Bond Statewide		21B. Drilling Contractor Unknown	
22. Approx. Date Work will start 9/27/79			

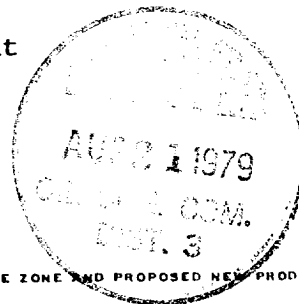
## PROPOSED CASING AND CEMENT PROGRAM

SIZE OF HOLE	SIZE OF CASING	WEIGHT PER FOOT	SETTING DEPTH	SACKS OF CEMENT	EST. TOP
12-1/4"	9-5/8"	32.3 #	300'	240 sx.	Surface
8-3/4"	7"	23 #	2603'	390 sx.	Surface
6-1/4"	4-1/2"	11.6 #	6893'	260 sx.	2453

Amoco proposes to drill the above well to further develop the Basin Dakota reservoir. The well will be drilled to the surface casing point using native mud. The well will then be drilled to the intermediate casing point with a low solids nondispersed mud system and to TD with air. Completion design will be based on open hole logs. Copy of all logs will be filed upon completion. Amoco's standard blowout prevention will be employed; see attached drawing for blowout preventer design.

Upon completion the well location will be cleaned and the reserve pit filled and leveled.

Gas produced from this well is dedicated to El Paso Natural Gas Co.



IN ABOVE SPACE DESCRIBE PROPOSED PROGRAM; IF PROPOSAL IS TO DEEPEN OR PLUG BACK, GIVE DATA ON PRESENT PRODUCTIVE ZONE AND PROPOSED NEW PRODUCTIVE ZONE. GIVE BLOWOUT PREVENTER PROGRAM, IF ANY.

I hereby certify that the information above is true and complete to the best of my knowledge and belief.

Signed Frank J. Chang Title District Engineer Date August 17, 1979

(This space for State Use)

APPROVED BY Frank J. Chang TITLE DEPUTY OIL & GAS INSPECTOR DATE AUG 21 1979

CONDITIONS OF APPROVAL, IF ANY:

## OIL CONSERVATION DIVISION

STATE OF NEW MEXICO  
ENERGY AND MINERALS DEPARTMENTP. O. BOX 2088  
SANTA FE, NEW MEXICO 87501Form C-107  
Revised 10-1-78

All distances must be from the outer boundaries of the Section.

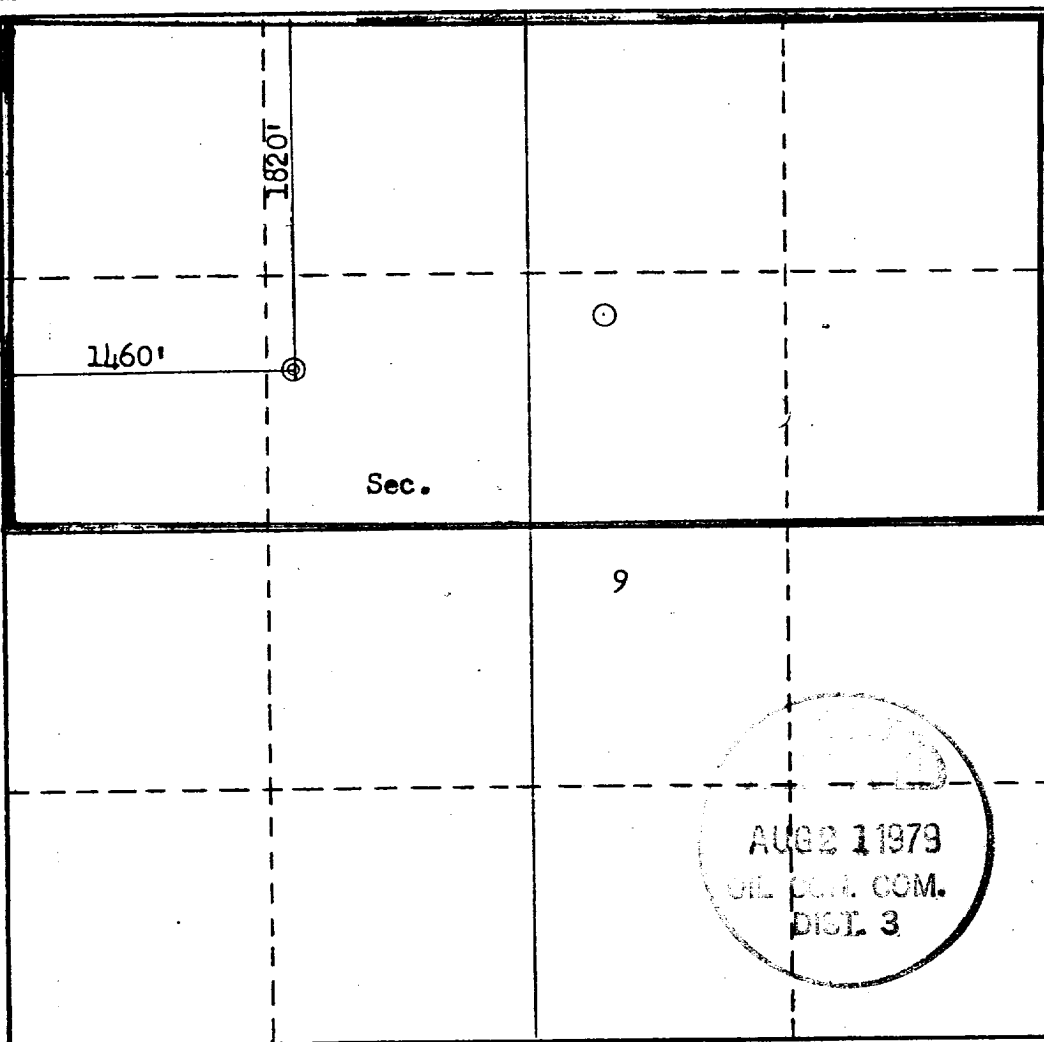
Operator <b>AMOCO PRODUCTION COMPANY</b>		Lease <b>HEATH GAS COM NJM</b>		Well No. <b>1 E</b>
Unit Letter <b>F</b>	Section <b>9</b>	Township <b>29N</b>	Range <b>9W</b>	County <b>San Juan</b>
Actual Footage Location of Well: <b>1820</b> feet from the <b>North</b> line and <b>1460</b> feet from the <b>West</b> line				
Ground Level Elev. <b>5703</b>	Producing Formation <b>Dakota</b>	Pool <b>Basin Dakota</b>	Dedicated Acreage: <b>320</b> Acres	

1. Outline the acreage dedicated to the subject well by colored pencil or hatchure marks on the plat below.
2. If more than one lease is dedicated to the well, outline each and identify the ownership thereof (both as to working interest and royalty).
3. If more than one lease of different ownership is dedicated to the well, have the interests of all owners been consolidated by communitization, unitization, force-pooling, etc?

☒ Yes ☐ No If answer is "yes," type of consolidation Communitization

If answer is "no," list the owners and tract descriptions which have actually been consolidated. (Use reverse side of this form if necessary.) \_\_\_\_\_

No allowable will be assigned to the well until all interests have been consolidated (by communitization, unitization, forced-pooling, or otherwise) or until a non-standard unit, eliminating such interests, has been approved by the Commission.



## CERTIFICATION

I hereby certify that the information contained herein is true and complete to the best of my knowledge and belief.

*B. E. Fackrell*

Name  
**B. E. FACKRELL**

Position  
**DISTRICT ENGINEER**

Company  
**AMOCO PRODUCTION COMPANY**

Date  
**AUGUST 7, 1979**

I hereby certify that the well location shown on this plat was plotted from field notes of actual surveys made by me or under my supervision, and that the same is true and correct to the best of my knowledge and belief.

Date Surveyed  
**July 21, 1979**

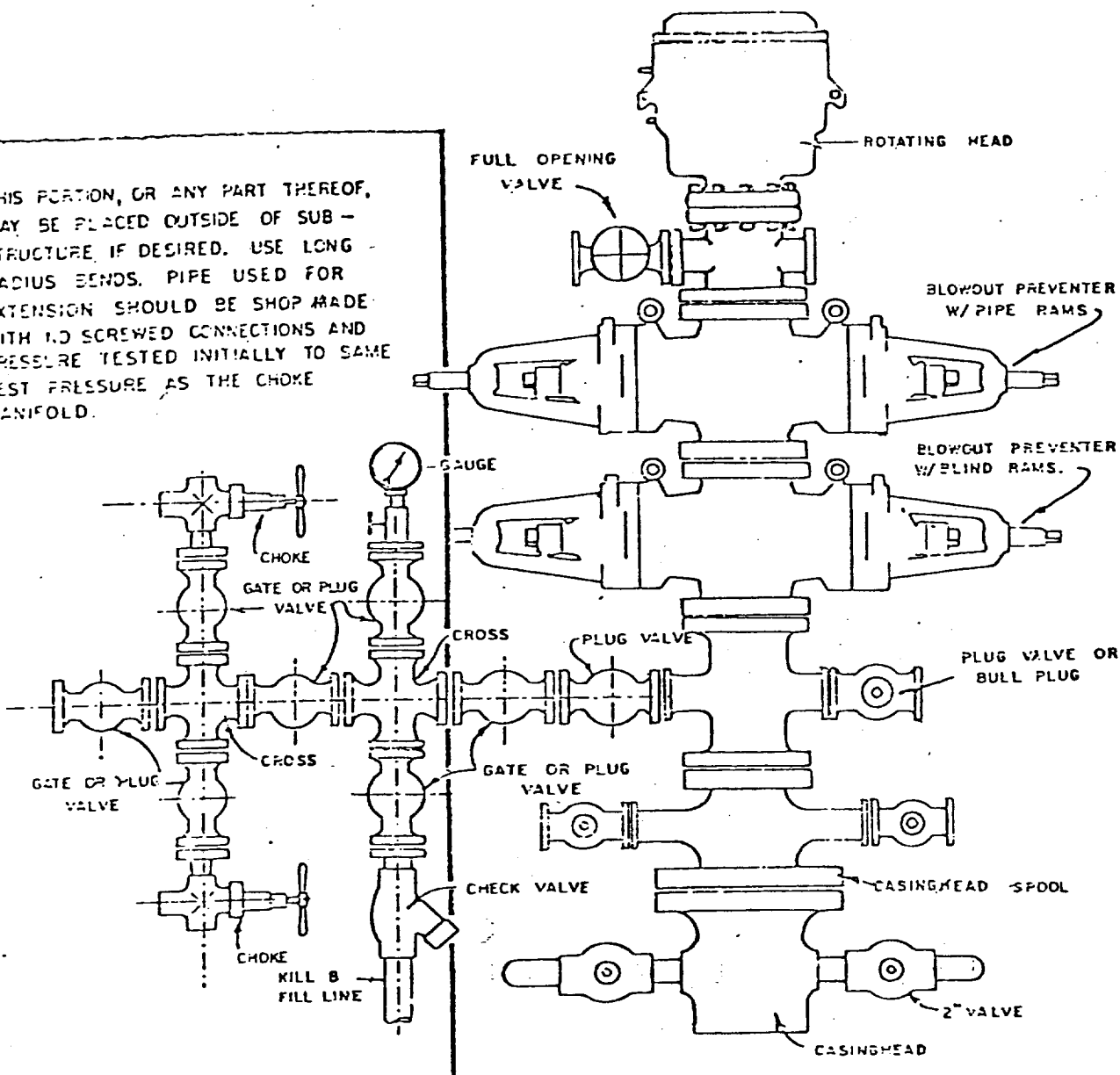
Registered Professional Engineer  
and/or Land Surveyor

*Fred B. Kerr Jr.*  
**Fred B. Kerr Jr.**

Certificate No.  
**3950**

0 330 660 990 1320 1650 1980 2310 2640 2000 1500 1000 500 0

THIS PORTION, OR ANY PART THEREOF, MAY BE PLACED OUTSIDE OF SUB-STRUCTURE IF DESIRED. USE LONG-RADIUS BENDS. PIPE USED FOR EXTENSION SHOULD BE SHOP MADE WITH NO SCREWED CONNECTIONS AND PRESSURE TESTED INITIALLY TO SAME TEST PRESSURE AS THE CHOKE MANIFOLD.



BLOWOUT PREVENTER HOOKUP