

UNITED STATES
DEPARTMENT OF THE INTERIOR
GEOLOGICAL SURVEY

APPLICATION FOR PERMIT TO DRILL, DEEPEN, OR PLUG BACK

1a. TYPE OF WORK

DRILL ☒DEEPEN ☐PLUG BACK ☐

b. TYPE OF WELL

OIL
WELL ☐GAS
WELL ☐

OTHER

SINGLE
ZONE ☒MULTIPLE
ZONE ☐

2. NAME OF OPERATOR

AMOCO PRODUCTION COMPANY

3. ADDRESS OF OPERATOR

501 Airport Drive, Farmington, New Mexico 87401

4. LOCATION OF WELL (Report location clearly and in accordance with any State requirements.*)

At surface

1530' FSL and 980' FWL, Section 9, T29N, R9W

At proposed prod. zone

Same

14. DISTANCE IN MILES AND DIRECTION FROM NEAREST TOWN OR POST OFFICE*

4 miles Northeast of Blanco, New Mexico

10. DISTANCE FROM PROPOSED*

LOCATION TO NEAREST
PROPERTY OR LEASE LINE, FT.
(Also to nearest drig. unit line, if any)

980'

18. DISTANCE FROM PROPOSED LOCATION*

TO NEAREST WELL, DRILLING, COMPLETED,
OR APPLIED FOR, ON THIS LEASE, FT.

500'

21. ELEVATIONS (Show whether DF, RT, GR, etc.)

5732' GR

23.

PROPOSED CASING AND CEMENTING PROGRAM

SIZE OF HOLE	SIZE OF CASING	WEIGHT PER FOOT	SETTING DEPTH	QUANTITY OF CEMENT
15"	13-3/8" New	54.5#	300'	200 sx class "B" Neat
12-1/4"	8-5/8" New	32#	2239'	800 sx class "B" 50:50 POZ
				Tail in 100 sx class "B" Neat

This wildcat will be drilled to a depth of 2239' to test the Fruitland. Completion plans will be made after logs are run. Additional information required by NTL-6 for the application to drill and a Multi-Point Surface Use Plan are attached. This well is being drilled as a ITE hole. It is requested that well information be kept confidential.

RECEIVED

OCT 22 1979

U. S. GEOLOGICAL SURVEY
FARMINGTON, N. M.

IN ABOVE SPACE DESCRIBE PROPOSED PROGRAM: If proposal is to deepen or plug back, give data on present productive zone and proposed new productive zone. If proposal is to drill or deepen directionally, give pertinent data on subsurface locations and measured and true vertical depths. Give blowout preventer program, if any.

24.

SIGNED

B. E. Jacob

TITLE

District Engineer

DATE October 19, 1979

(This space for Federal or State office use)

PERMIT NO.

APPROVAL DATE

APPROVED BY

TITLE

DATE

CONDITIONS OF APPROVAL, IF ANY:

ok E. Jacob

NMOCC

OIL CONSERVATION DIVISION

P. O. BOX 2088

Form C-107
Revised 10-1-78

STATE OF NEW MEXICO

SANTA FE, NEW MEXICO 87501

ENERGY AND MINERALS DEPARTMENT

All distances must be from the outer boundaries of the Section.

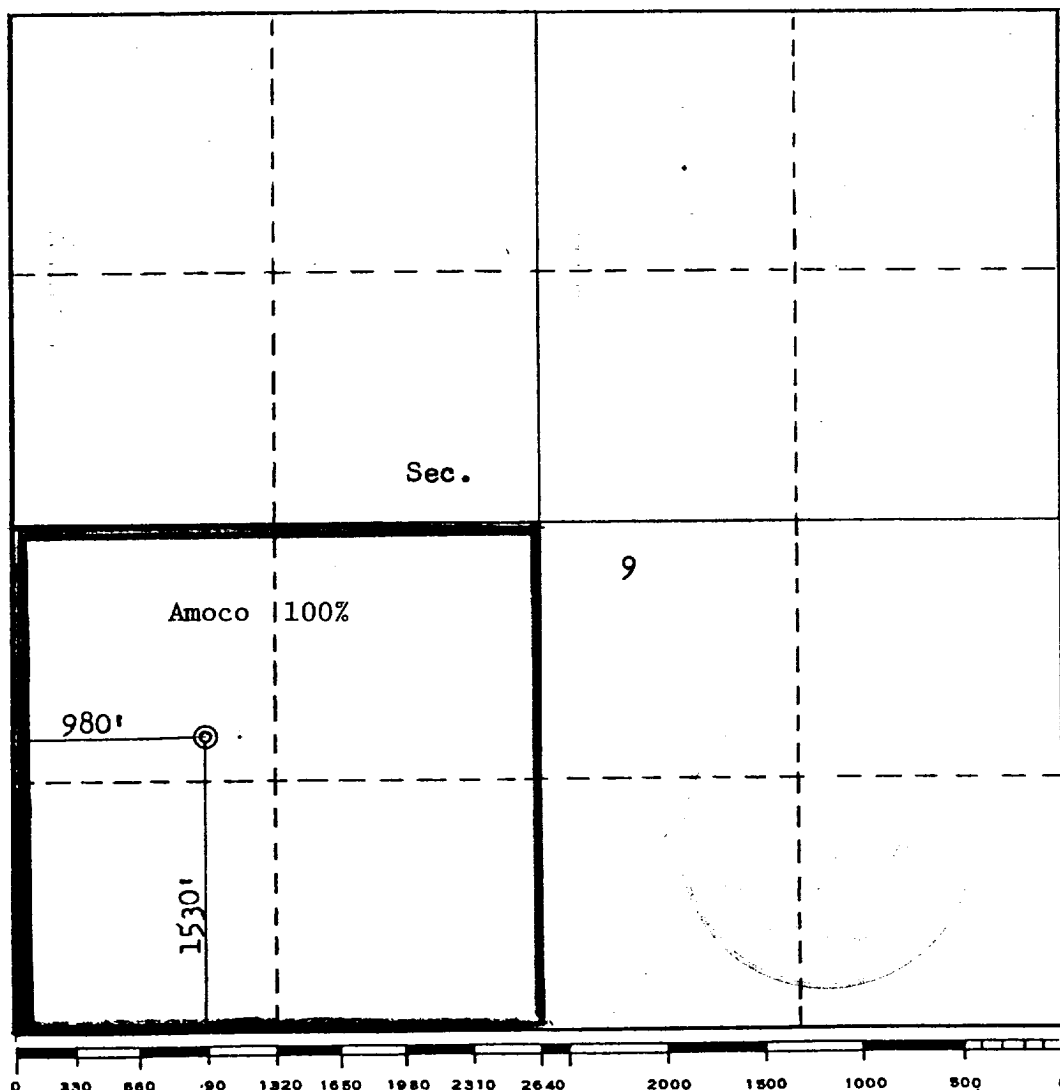
Operator AMOCO PRODUCTION COMPANY			Lease W, D. HEATH A		Well No. 14
Unit Letter L	Section 9	Township 29N	Range 9W	County San Juan	
Actual Footage Location of Well: 1530 feet from the South line and 980 feet from the West line					
Ground Level Elev. 5732	Producing Formation Fruitland		Pool Wildcat	Dedicated Acreage: 160 Acres	

1. Outline the acreage dedicated to the subject well by colored pencil or hachure marks on the plat below.
2. If more than one lease is dedicated to the well, outline each and identify the ownership thereof (both as to working interest and royalty).
3. If more than one lease of different ownership is dedicated to the well, have the interests of all owners been consolidated by communitization, unitization, force-pooling, etc?

☐ Yes ☐ No If answer is "yes," type of consolidation _____

If answer is "no," list the owners and tract descriptions which have actually been consolidated. (Use reverse side of this form if necessary.) _____

No allowable will be assigned to the well until all interests have been consolidated (by communitization, unitization, forced-pooling, or otherwise) or until a non-standard unit, eliminating such interests, has been approved by the Commission.



CERTIFICATION

I hereby certify that the information contained herein is true and complete to the best of my knowledge and belief.

B. E. Fackrell

Name
B. E. FACKRELL

Position
DISTRICT ENGINEER

Company
AMOCO PRODUCTION COMPANY

Date
SEPTEMBER 28, 1979

I hereby certify that the well location shown on this plat was plotted from field notes of actual surveys made by me or under my supervision, and that the same is true and correct to the best of my knowledge and belief.

Date Surveyed

September 28, 1979

Registered Professional Engineer
and/or Land Surveyor

Fred B. Kerr Jr
Fred B. Kerr Jr

Certificate No.

39508 B KERR, JR.

SUPPLEMENTAL INFORMATION TO FORM 9-331C

W. D. HEATH "A" NO. 14
1530' FSL & 980' FWL, SECTION 9, T29N, R9W
SAN JUAN COUNTY, NEW MEXICO

The geologic name of the surface formation is the Tertiary Nacimiento.
Estimated tops of important potential hydrocarbon bearing formations:

<u>FORMATION</u>	<u>DEPTH</u>	<u>ELEVATIONS</u>
Fruitland	1951'	3781'
Pictured Cliffs	2239'	3493'
TD	2239'	

Estimated KB elevation: 5745'.

Drilling fluid to TD will be a low solids non-dispersed mud system. Open hole logging program will include logs from TD to below surface casing:

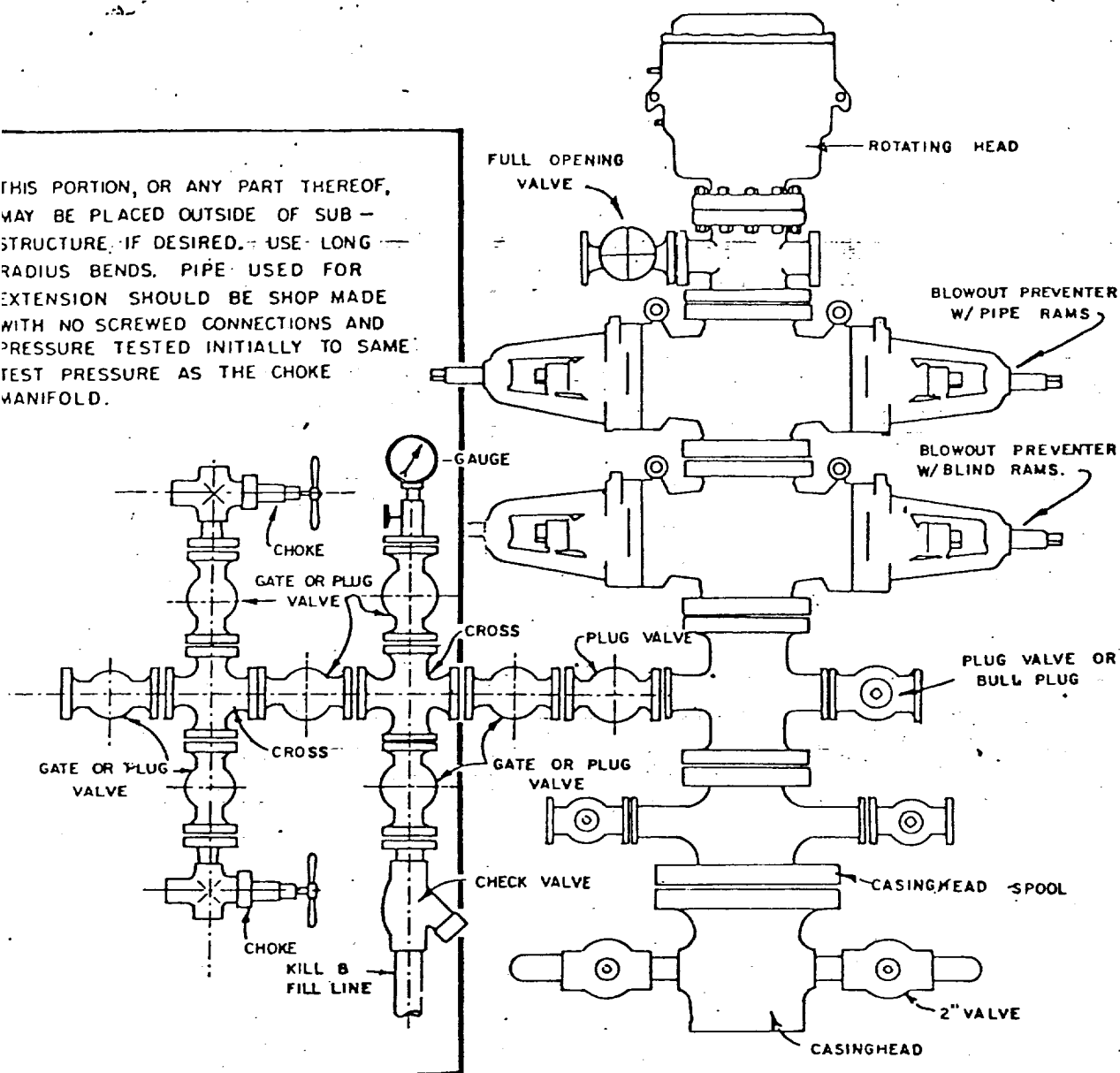
Induction Electric, SP, GR
Compensated Neutron Density - Formation Density - GR

Completion design will be based on these logs. Three cores will be taken in the Fruitland.

Operations will commence when permitted and last approximately 3 weeks.

Amoco's standard blowout prevention will be employed (see attached drawing).

THIS PORTION, OR ANY PART THEREOF, MAY BE PLACED OUTSIDE OF SUB-STRUCTURE, IF DESIRED. USE LONG RADIUS BENDS. PIPE USED FOR EXTENSION SHOULD BE SHOP MADE WITH NO SCREWED CONNECTIONS AND PRESSURE TESTED INITIALLY TO SAME TEST PRESSURE AS THE CHOKE MANIFOLD.



BLOWOUT PREVENTER HOOKUP

MULTI-POINT SURFACE USE PLAN

W. D. HEATH "A" NO. 14
1530' FSL & 980' FWL, SECTION 9, T29N, R9W
SAN JUAN COUNTY, NEW MEXICO


1. The attached topographic map shows the proposed route to the location.
2. It will be necessary to build an access road approximately 100 feet in length. Location is 500 feet west of Amoco's W. D. Heath "A" No. 1.
3. Existing oil and gas wells within a one-mile radius of our proposed well have been spotted on the vicinity map.
4. There is a 380-barrel tank and facilities located at well indicated on the topo map.
5. Water will be hauled from the San Juan River.
6. No construction materials will be hauled in for this location.
7. A 75' by 75' pit will be built on location to hold all drilling waste. Upon completion of the well, pit will be fenced and waste and liquids left to dry, then pit will be filled and leveled.
8. There are neither airstrips nor camps in the vicinity.
9. The well site layout, reserve, burn and trash pits are shown on the attached Drill Site Specification Sheet. A 5-foot cut will be made off top of location.
10. Restoration of the surface will be accomplished by cleaning up and leveling upon completion of the well. Drilling mud will be hauled away and the reserve pit back filled. Reseeding of the site will be carried out as instructed by the Bureau of Land Management.
11. The general topography is a sandy soil with vegetation consisting of sagebrush and native grasses.

Representatives of the U. S. Geological Survey's Farmington Office and the Bureau of Land Management will inspect the site with Amoco personnel. Cultural resources inspection will be conducted by an archaeologist from San Juan College.

12. Operator's Representative: R. W. Schroeder
Phone: Office: 505-325-8841; Home: 505-325-6164
Address: 501 Airport Drive, Farmington, NM 87401

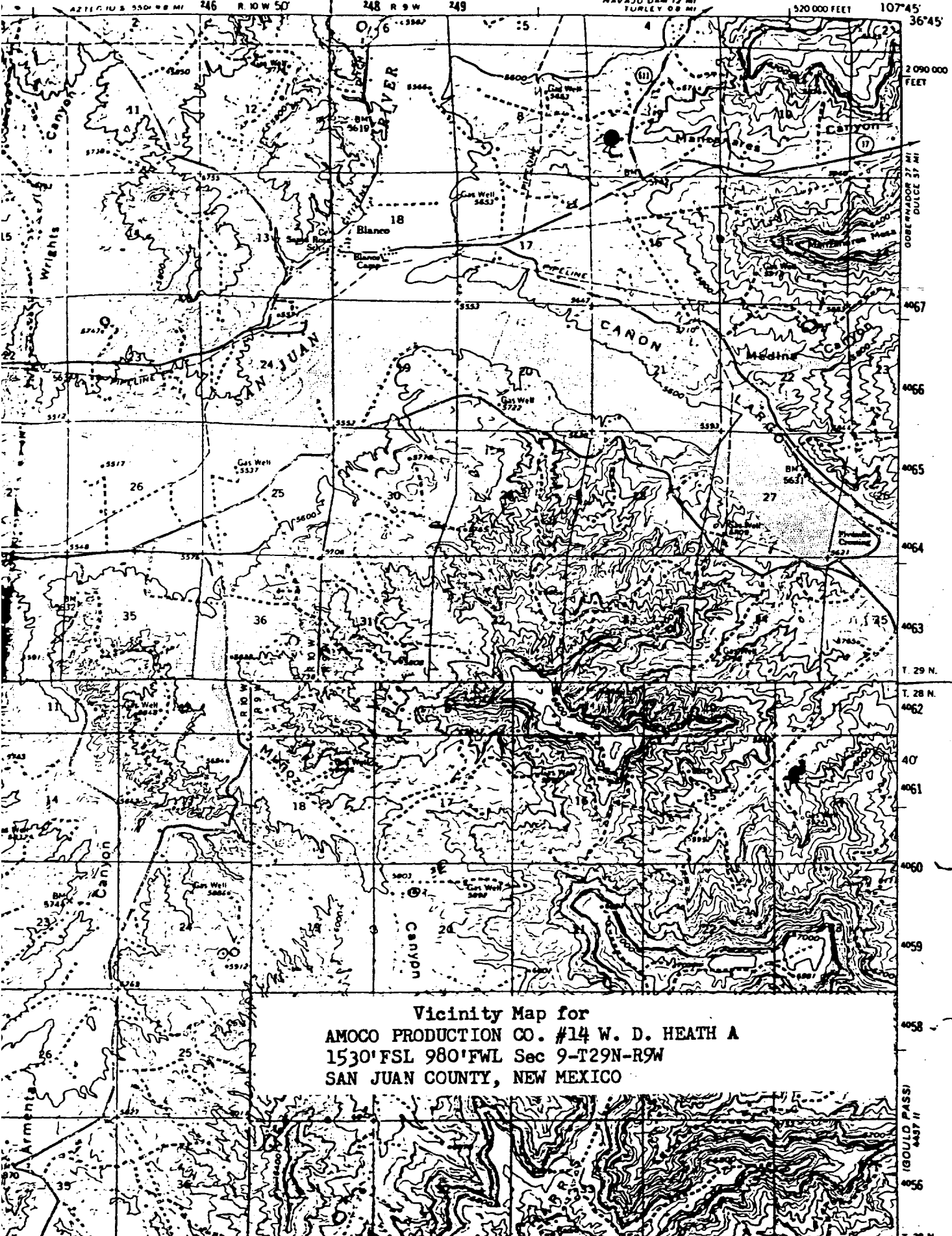
Certification: I hereby certify that I, or persons under my direct supervision, have inspected the proposed drillsite and access route, that I am familiar with the conditions which presently exist; that the statements made in this plan are, to the best of my knowledge, true and correct; and, that the work associated with the operations proposed herein will be performed by AMOCO PRODUCTION COMPANY and its contractors and sub-contractors in conformity with this plan and the terms and conditions under which it is approved.

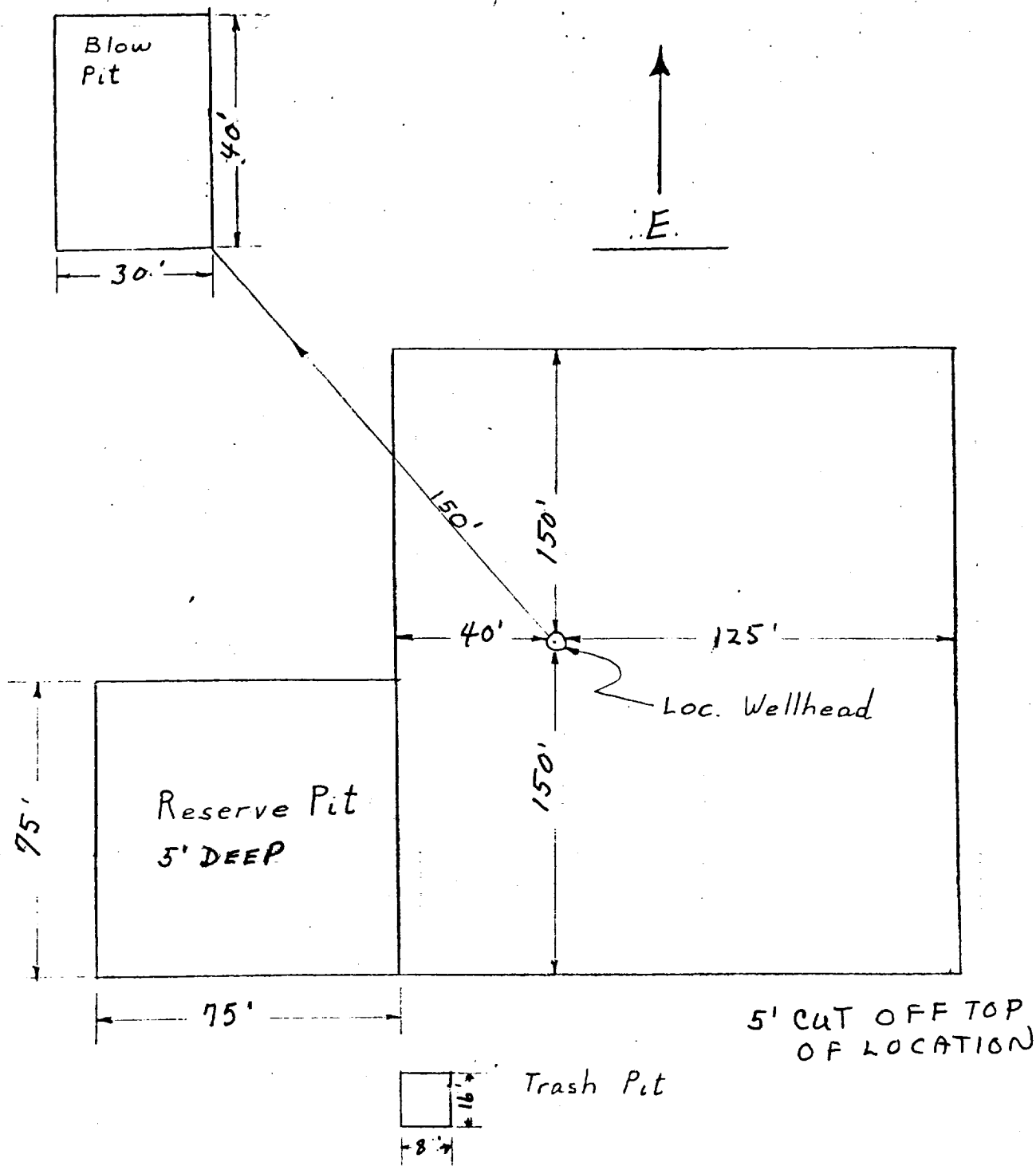
Date October 16, 1979


R. W. Schroeder, District Superintendent

BLOOMFIELD QUADRANGLE
NEW MEXICO-SAN JUAN CO.
15 MINUTE SERIES (TOPOGRAPHIC)

4437 I
(NAVAJO DAM)





APPROXIMATELY 1.2 Acres

Amoco Production Company	SCALE: NONE
DRILLING LOCATION SPECS W.D. HEATH "A" NO. 14	DRG. NO.