

UNITED STATES
DEPARTMENT OF THE INTERIOR
GEOLOGICAL SURVEY

30-045-25193

APPLICATION FOR PERMIT TO DRILL, DEEPEN, OR PLUG BACK

1a. TYPE OF WORK

DRILL ☒DEEPEN ☐PLUG BACK ☐

b. TYPE OF WELL

OIL
WELL ☐GAS
WELL ☒OTHER ☐SINGLE
ZONE ☒MULTIPLE
ZONE ☐

2. NAME OF OPERATOR

Tenneco Oil Company

3. ADDRESS OF OPERATOR

P.O. Box 3249, Englewood, CO 80155

4. LOCATION OF WELL (Report location clearly and in accordance with any State requirements.)*

At surface

1750' FSL, 1510' FEL

At proposed prod. zone

Same

14. DISTANCE IN MILES AND DIRECTION FROM NEAREST TOWN OR POST OFFICE*

12.47 miles SE from Blanco, New Mexico

15. DISTANCE FROM PROPOSED*

LOCATION TO NEAREST

PROPERTY OR LEASE LINE, FT.

(Also to nearest drig. unit line, if any)

1510'

16. NO. OF ACRES IN LEASE

1920.00

17. NO. OF ACRES ASSIGNED

TO THIS WELL

E/320

18. DISTANCE FROM PROPOSED LOCATION*

TO NEAREST WELL, DRILLING, COMPLETED,

OR APPLIED FOR, ON THIS LEASE, FT.

19. PROPOSED DEPTH

7550'

20. ROTARY OR CABLE TOOLS

Rotary

21. ELEVATIONS (Show whether DF, RT, GR, etc.)

ground 6485'

22. APPROX. DATE WORK WILL START*

January, 1982

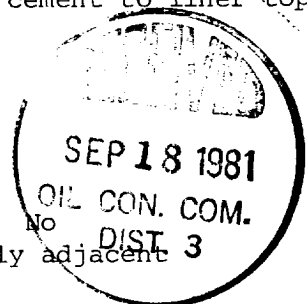
23. PROPOSED CASING AND CEMENTING PROGRAM

SIZE OF HOLE	SIZE OF CASING	WEIGHT PER FOOT	SETTING DEPTH	QUANTITY OF CEMENT
12 1/2"	9 5/8"	36#	± 250'	Circulate cement to surface
8 3/4"	7"	23#	± 3850'	Circulate cement to surface
6 1/2"	4 1/2"	10.5#, 11.6#	± 7550'	Circulate cement to liner top

DRILLING OPERATIONS AUTHORIZED ARE
SUBJECT TO COMPLIANCE WITH ATTACHED
"See attached drilling program."

Note Paragraphs 4 B & 15C

Gas is dedicated.

Reserve pits must be lined with bentonite/gel to prevent seepage. No
surface disturbance past 100' SE of stake. Road will be immediately adjacent
to location.

IN ABOVE SPACE DESCRIBE PROPOSED PROGRAM: If proposal is to deepen or plug back, give data on present productive zone and proposed new productive zone. If proposal is to drill or deepen directionally, give pertinent data on subsurface locations and measured and true vertical depths. Give blowout preventer program, if any.

24.

SIGNED

Don H. Morrison
DON H. MORRISON

TITLE

Production Analyst

DATE

August 14, 1981

(This space for Federal or State office use)

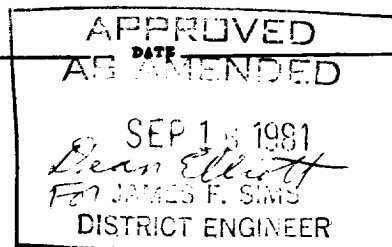
PERMIT NO.

APPROVAL DATE

APPROVED BY

TITLE

CONDITIONS OF APPROVAL, IF ANY:



*See Instructions On Reverse Side

OIL CONSERVATION DIVISION

P. O. BOX 2088

Form C-107
Revised 10-1-78STATE OF NEW MEXICO
ENERGY AND MINERALS DEPARTMENT

SANTA FE, NEW MEXICO 87501

All distances must be from the outer boundaries of the Section.

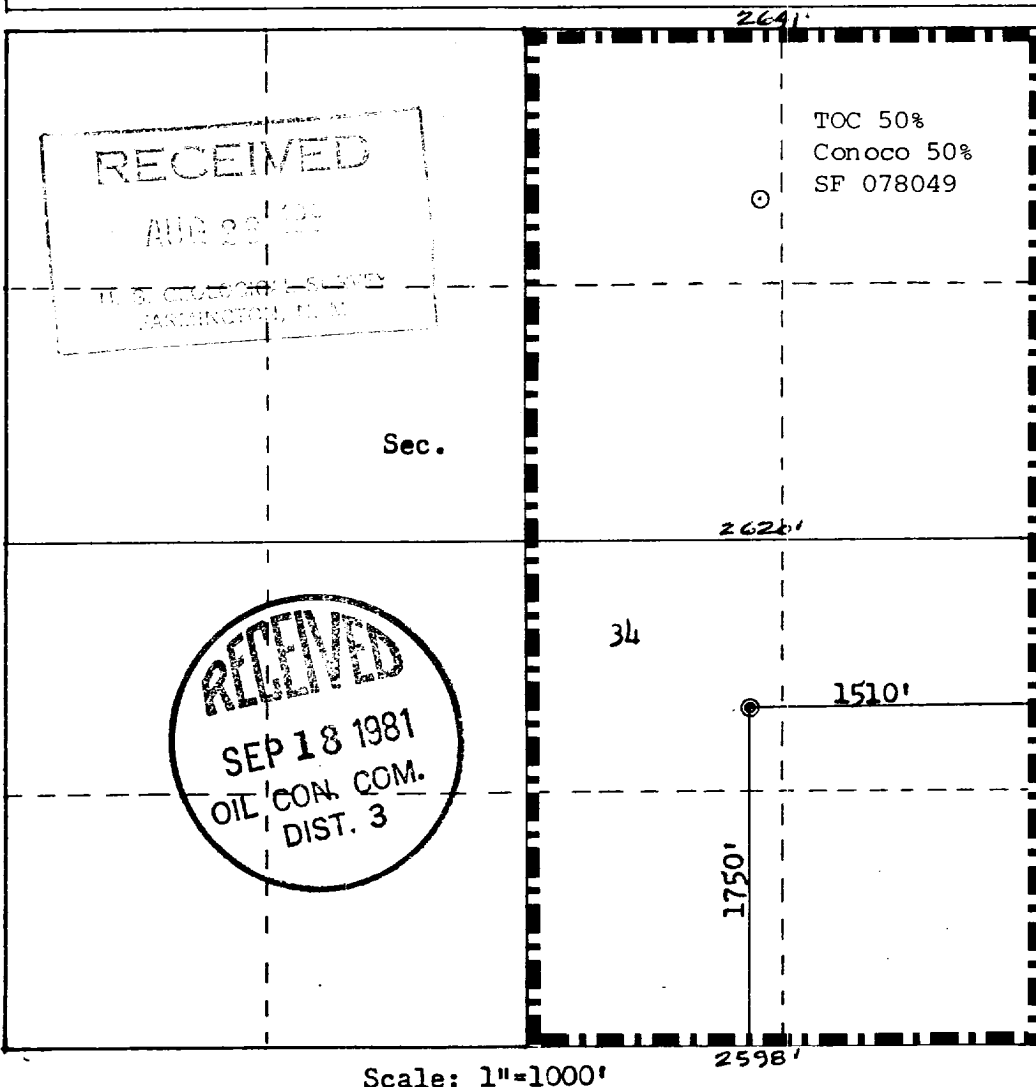
Operator TENNECO OIL COMPANY			Lease HUGHES A		Well No. 4E
Unit Letter J	Section 34	Township 29N	Range 8W	County San Juan	
Actual Footage Location of Well: 1750 feet from the South line and 1510 feet from the East line					
Ground Level Elev. 6485	Producing Formation Dakota		Pool Basin Dakota		Dedicated Acreage: 320 Acres

1. Outline the acreage dedicated to the subject well by colored pencil or hatchure marks on the plat below.
2. If more than one lease is dedicated to the well, outline each and identify the ownership thereof (both as to working interest and royalty).
3. If more than one lease of different ownership is dedicated to the well, have the interests of all owners been consolidated by communitization, unitization, force-pooling, etc?

☐ Yes ☐ No If answer is "yes," type of consolidation _____

If answer is "no," list the owners and tract descriptions which have actually been consolidated. (Use reverse side of this form if necessary.) _____

No allowable will be assigned to the well until all interests have been consolidated (by communitization, unitization, forced-pooling, or otherwise) or until a non-standard unit, eliminating such interests, has been approved by the Commission.



CERTIFICATION

I hereby certify that the information contained herein is true and complete to the best of my knowledge and belief.

Don H. Morrison
Name

Don H. Morrison
Position

Production Analyst
Company

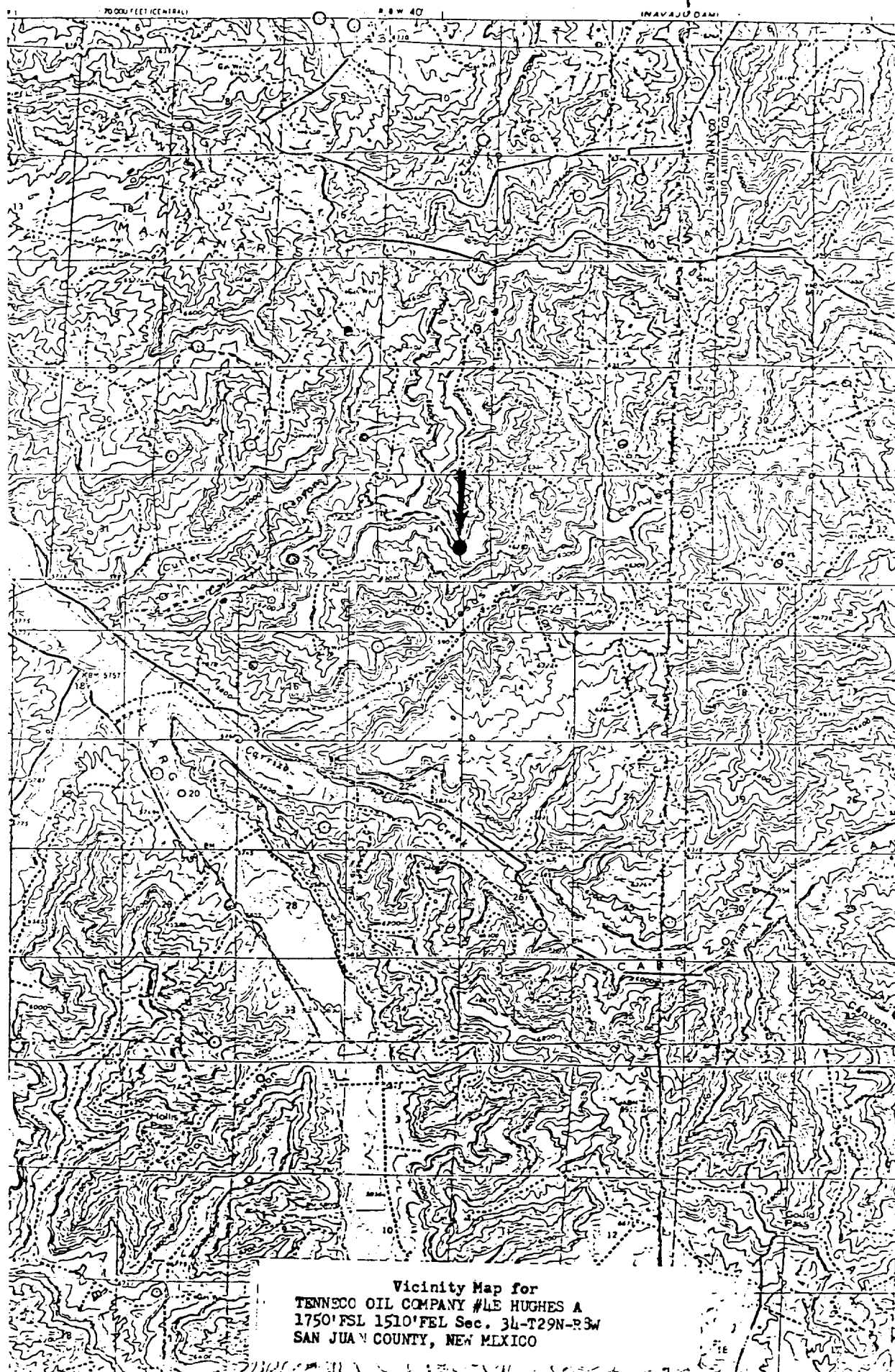
Tenneco Oil Company
Date

July 21, 1981

I hereby certify that the well location shown on this plat was plotted from field notes of actual surveys made by me or under my supervision, and that the same is true and correct to the best of my knowledge and belief.

Date Surveyed
JULY 21, 1981
Registered Professional Engineer
and Land Surveyor
Z. B. Kerr, Jr.
Certificate No.
3958
KERR, JR.

STATES
OF THE INTERIOR
AL SURVEY



Vicinity Map for
TENNECO OIL COMPANY #4E HUGHES A
1750' FSL 1510' FEL Sec. 34-T29N-R3W
SAN JUAN COUNTY, NEW MEXICO