

UNITED STATES  
DEPARTMENT OF THE INTERIOR  
GEOLOGICAL SURVEY

## APPLICATION FOR PERMIT TO DRILL, DEEPEN, OR PLUG BACK

## 1a. TYPE OF WORK

DRILL ☒DEEPEN ☐PLUG BACK ☐

## b. TYPE OF WELL

OIL  
WELL ☐GAS  
WELL ☒

OTHER

SINGLE  
ZONE ☒MULTIPLE  
ZONE ☐

## 2. NAME OF OPERATOR

Tenneco Oil Company

## 3. ADDRESS OF OPERATOR

P.O. Box 3249, Englewood, CO 80155

## 4. LOCATION OF WELL (Report location clearly and in accordance with any State requirements.)\*

At surface

1610' FSL, 1045' FWL

At proposed prod. zone

Same as above

BUREAU OF LAND MANAGEMENT  
FARMINGTON RESOURCE AREA

## 14. DISTANCE IN MILES AND DIRECTION FROM NEAREST TOWN OR POST OFFICE\*

Approximately 10 miles Southeast of Blanco, New Mexico

## 10. DISTANCE FROM PROPOSED\*

LOCATION TO NEAREST

PROPERTY OR LEASE LINE, FT.

(Also to nearest drilg. unit line, if any)

1045'

## 18. DISTANCE FROM PROPOSED LOCATION\*

TO NEAREST WELL, DRILLING, COMPLETED,

OR APPLIED FOR, ON THIS LEASE, FT.

## 16. NO. OF ACRES IN LEASE

937.2

17. NO. OF ACRES ASSIGNED  
TO THIS WELL

1/820

## 19. PROPOSED DEPTH

7330'

## 20. ROTARY OR CABLE TOOLS

Rotary

## 21. ELEVATIONS (Show whether DF, RT, GR, etc.)

6244' GR

DRILLING OPERATIONS AUTHORIZED ARE  
SUBJECT TO COMPLIANCE WITH ATTACHED  
"GENERAL REQUIREMENTS"

## 22. APPROX. DATE WORK WILL START\*

ASAP

## 23. PROPOSED CASING AND CEMENTING PROGRAM

This action is subject to administrative  
appeal pursuant to 30 CFR 290.

SIZE OF HOLE	SIZE OF CASING	WEIGHT PER FOOT	SETTING DEPTH	QUANTITY OF CEMENT
12-1/4"	9-5/8"	36#	+ 280'	Circ to surface
8-3/4"	7"	23#	+ 3445'	Circ to surface - 2 stages
6-1/4"	4-1/2"	10.5, 11.6#	+ 7330'	Circ to liner top

The gas is dedicated

See attached

RECEIVED

NOV 29 1983

OIL CON. DIV.  
DIST. 3

IN ABOVE SPACE DESCRIBE PROPOSED PROGRAM: If proposal is to deepen or plug back, give data on present productive zone and proposed new productive zone. If proposal is to drill or deepen directionally, give pertinent data on subsurface locations and measured and true vertical depths. Give blowout preventer program, if any.

24.

SIGNED

*Denise Wilson*

TITLE Production Analyst

DATE October 18, 1983

(This space for Federal or State office use)

PERMIT NO.

APPROVAL DATE

APPROVED BY

TITLE

CONDITIONS OF APPROVAL, IF ANY:

APPROVED  
AS AMENDED

\*See Instructions On Reverse Side

NMOC

NOV 25 1983

*H. Buchanan*  
M. MILLENBACH  
AREA MANAGER

All distances must be from the outer boundaries of the Section.

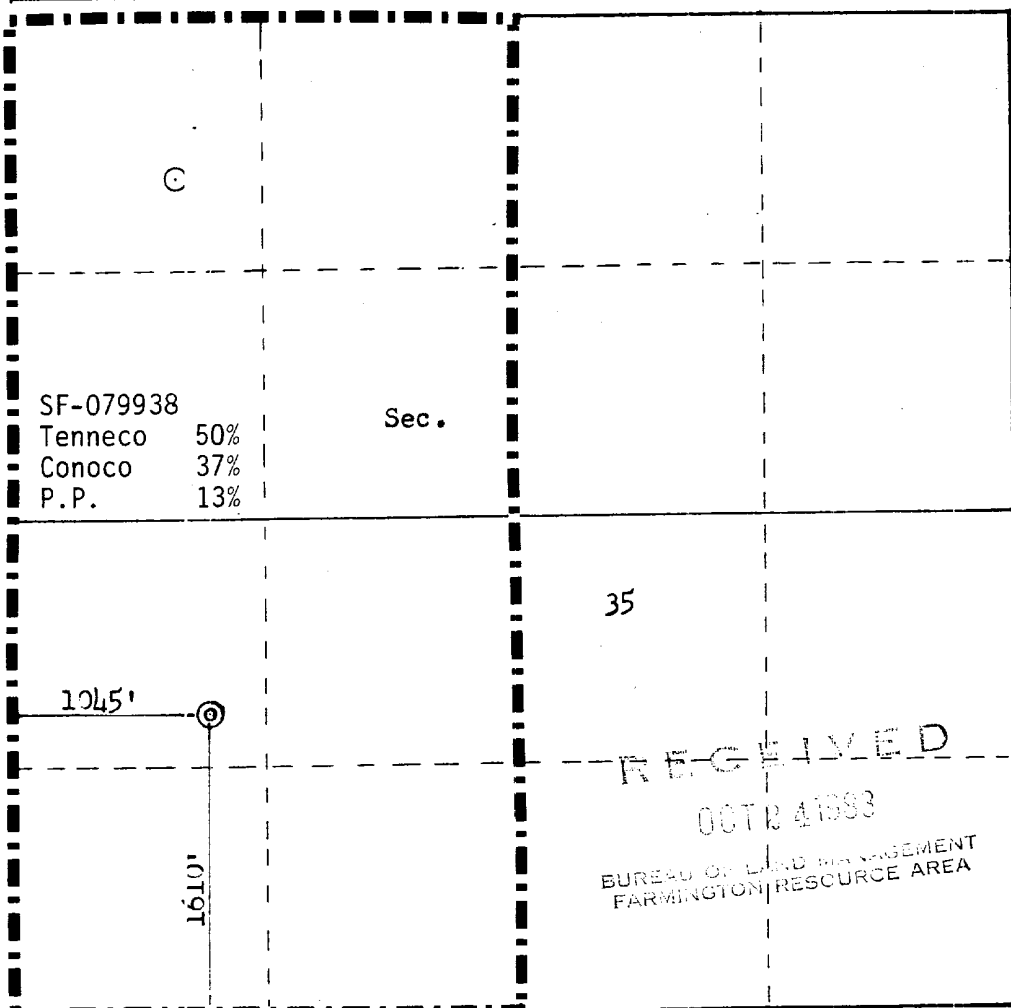
Operator <b>TENNECO OIL COMPANY</b>		Lease <b>JONES "A"</b>		Well No. <b>1E</b>
Unit Letter <b>L</b>	Section <b>35</b>	Township <b>29N</b>	Range <b>8W</b>	County <b>San Juan</b>
Actual Footage Location of Well: <b>1610</b> feet from the <b>South</b> line and <b>1045</b> feet from the <b>West</b> line				
Ground Level Elev: <b>6244</b>	Producing Formation <b>Dakota</b>	Pool <b>Basin Dakota</b>	Dedicated Acreage: <b>320</b> Acres	

1. Outline the acreage dedicated to the subject well by colored pencil or hatchure marks on the plat below.
2. If more than one lease is dedicated to the well, outline each and identify the ownership thereof (both as to working interest and royalty).
3. If more than one lease of different ownership is dedicated to the well, have the interests of all owners been consolidated by communitization, unitization, force-pooling, etc?

☐ Yes ☐ No If answer is "yes," type of consolidation \_\_\_\_\_

If answer is "no," list the owners and tract descriptions which have actually been consolidated (Use reverse side of this form if necessary.) \_\_\_\_\_

No allowable will be assigned to the well until all interests have been consolidated (by communitization, unitization, forced-pooling, or otherwise) or until a non-standard unit, eliminating such interests, has been approved by the Commission.



Scale: 1"=1000'

CERTIFICATION

I hereby certify that the information contained herein is true and complete to the best of my knowledge and belief.

*Denise Wilson*

Name  
Denise Wilson

Position  
Production Analyst

Company  
Tenneco Oil Company

Date  
September 2, 1983

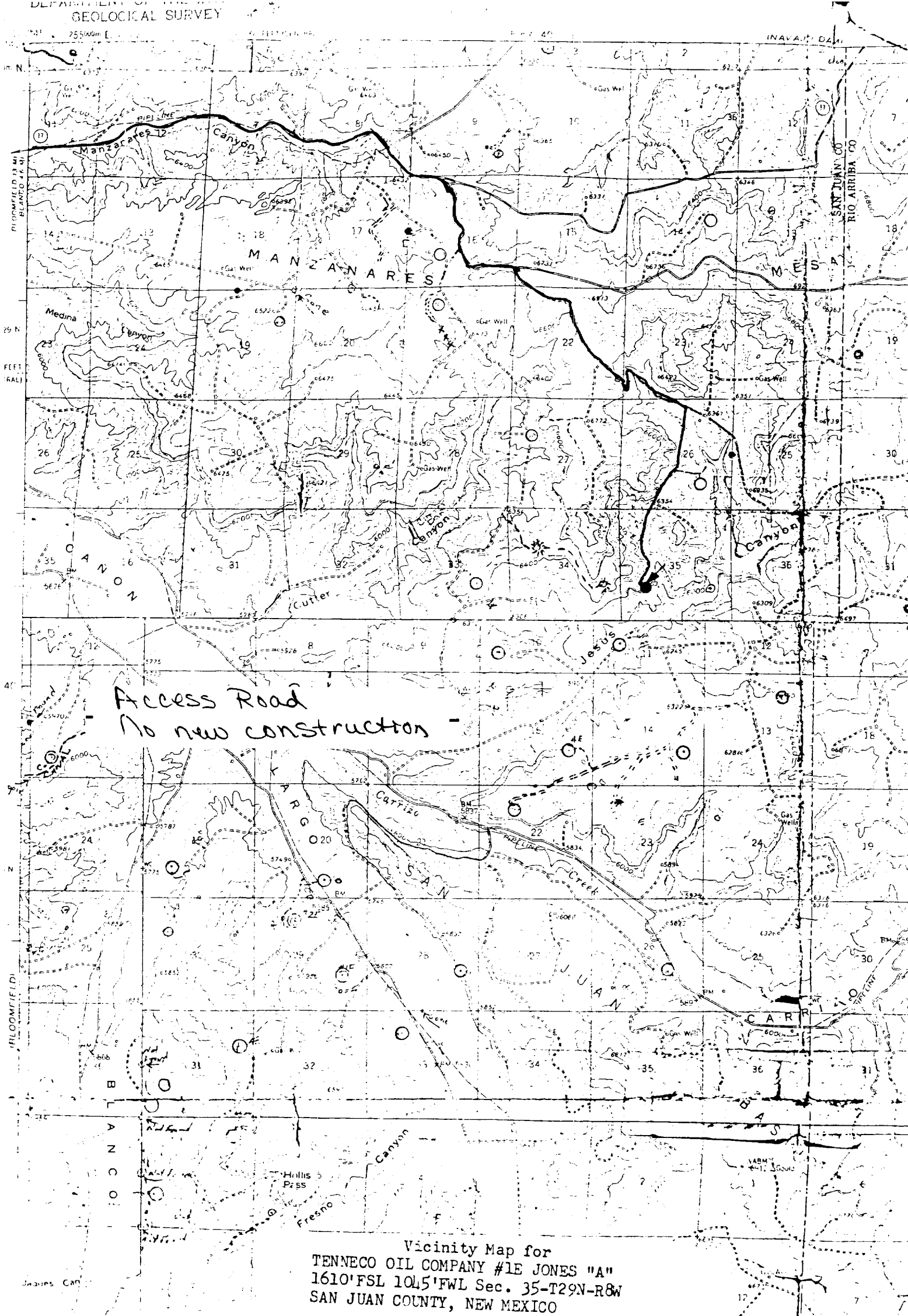
I hereby certify that the well location shown on this plat was plotted from field notes of actual surveys made by me or under my supervision, and that the same is true and correct to the best of my knowledge and belief.

Date Surveyed  
August 18, 1983

Registered Professional Engineer and Land Surveyor

*Fred B. Kerr Jr.*  
Fred B. Kerr Jr.

Certificate No. 3950



Vicinity Map for  
TENNECO OIL COMPANY #1E JONES "A"  
1610' FSL 1045' FWL Sec. 35-T29N-R8W  
SAN JUAN COUNTY, NEW MEXICO