

NEW MEXICO OIL CONSERVATION COMMISSION
WELL LOCATION AND ACREAGE DEDICATION PLAT

Form C-102
Supersedes C-128
Effective 1-1-65

All distances must be from the outer boundaries of the Section.

Operator AMOCO PRODUCTION COMPANY			Lease HOUCK GAS COM "C"		Well No. 1E
Unit Letter C	Section 6	Township 29N	Range 9W	County San Juan	
Actual Footage Location of Well: 790 feet from the North line and 1365 feet from the West line					
Ground Level Elev: 5706	Producing Formation Dakota		Pool Basin Dakota		Dedicated Acreage: 320 Acres

1. Outline the acreage dedicated to the subject well by colored pencil or hachure marks on the plat below.
2. If more than one lease is dedicated to the well, outline each and identify the ownership thereof (both as to working interest and royalty).
3. If more than one lease of different ownership is dedicated to the well, have the interests of all owners been consolidated by communitization, unitization, force-pooling, etc?

☒ Yes ☐ No If answer is "yes," type of consolidation Communitized

If answer is "no," list the owners and tract descriptions which have actually been consolidated. (Use reverse side of this form if necessary.) _____

No allowable will be assigned to the well until all interests have been consolidated (by communitization, unitization, forced-pooling, or otherwise) or until a non-standard unit, eliminating such interests, has been approved by the Commission.

6	

CERTIFICATION

I hereby certify that the information contained herein is true and complete to the best of my knowledge and belief.

Name

B.D. Shaw

Position

Administrative Supervisor

Company

Amoco Production Co.

Date

10/5/84

I hereby certify that the well location shown on this plat was plotted from field notes of actual surveys made by me or under my supervision, and that the same is true and correct to the best of my knowledge and belief.

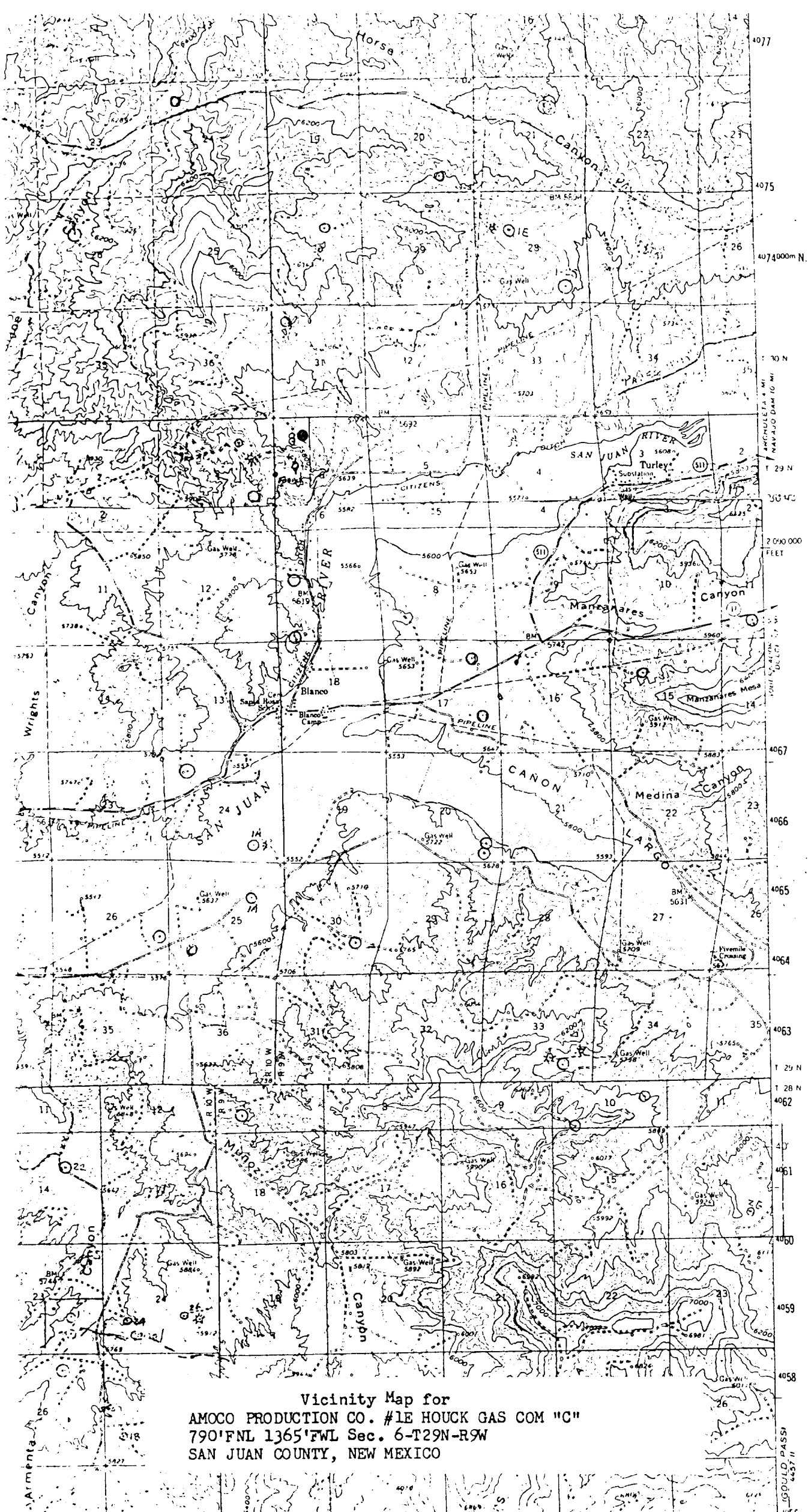
Date Surveyed

September 1984

Registered Professional Engineer and Land Surveyor

Fred B. Kerr, Jr.

Certificate No.



Vicinity Map for
AMOCO PRODUCTION CO. #1E HOUCK GAS COM "C"
790'FNL 1365'FWL Sec. 6-T29N-R9W
SAN JUAN COUNTY, NEW MEXICO