

UNITED STATES
DEPARTMENT OF THE INTERIOR
BUREAU OF LAND MANAGEMENT

APPLICATION FOR PERMIT TO DRILL, DEEPEN, OR PLUG BACK

1a. TYPE OF WORK
DRILL ☒ DEEPEN ☐ PLUG BACK ☐

b. TYPE OF WELL
OIL WELL ☐ GAS WELL ☒ OTHER ☐ SINGLE ZONE ☒ MULTIPLE ZONE ☐

2. NAME OF OPERATOR

Amoco Production Co.

3. ADDRESS OF OPERATOR

501 Airport Drive, Farmington, N M 87401

4. LOCATION OF WELL (Report location clearly and in accordance with any State requirements.)*

At surface 965' 1795'
850' FNL x 1820' FWL

At proposed prod. zone

Same

14. DISTANCE IN MILES AND DIRECTION FROM NEAREST TOWN OR POST OFFICE*

3 miles S.E. of Blanco, New Mexico

15. DISTANCE FROM PROPOSED*

LOCATION TO NEAREST
PROPERTY OR LEASE LINE, FT.
(Also to nearest drlg. unit line, if any) 850'

18. DISTANCE FROM PROPOSED LOCATION*
TO NEAREST WELL, DRILLING, COMPLETED,
OR APPLIED FOR, ON THIS LEASE, FT.

None

21. ELEVATIONS (Show whether DF, RT, GR, etc.)

5672' GR 5664'

23.

DRILLING OPERATIONS AUTHORIZED ARE
SUBJECT TO COMPLIANCE WITH ATTACHED
"GENERAL REQUIREMENTS" CEMENTING PROGRAM

5. LEASE DESIGNATION AND SERIAL NO.

SF-80245B

6. IF INDIAN, ALLOTTEE OR TRIBE NAME

7. UNIT AGREEMENT NAME

8. FARM OR LEASE NAME

L.V. Hammer "C"

9. WELL NO.

1

10. FIELD AND POOL, OR WILDCAT

Basin Dakota

11. SEC., T., R., M., OR BLK.
AND SURVEY OR AREA

NE/NW Sec 21, T29N, R9W

12. COUNTY OR PARISH

San Juan

13. STATE

NM

RECEIVED

JUN 24 1985

BUREAU OF LAND MANAGEMENT
FARMINGTON RESOURCE AREA

16. NO. OF ACRES IN LEASE

640

17. NO. OF ACRES ASSIGNED
TO THIS WELL

320

19. PROPOSED DEPTH

7095'

20. ROTARY OR CABLE TOOLS

Rotary

22. APPROX. DATE WORK WILL START*

As soon as permitted

SIZE OF HOLE	SIZE OF CASING	WEIGHT PER FOOT	SETTING DEPTH	QUANTITY OF CEMENT
12-1/4"	9-5/8"	32.3#, H-40	300'	354 c.f. Class B
8-3/4"	7'	20#, K-55	2535'	453 c.f. 65:35 Class B-Tail
6-1/4"	4-1/2"	10.5#, K-55	7095'	with 118 c.f. Class B Neat 1092 c.f. 50:50 Class B

Amoco proposes to drill the above well to further develop the Basin Dakota reservoir. The well will be drilled to the surface casing point using native mud. The well will then be drilled to TD with a low solids nondispersed mud system. Completion design will be based on open hole logs. Copy of all logs will be filed upon completion. Amoco's standard blowout prevention will be employed; see attached drawing for blowout preventer design. Upon completion the well be cleaned and the reserve pit filled and leveled. The gas from this well is dedicated to El Paso Natural Gas Co.

This action is subject to technical and
procedural review pursuant to 43 CFR 3165.3
and appeal pursuant to 43 CFR 3165.4.

IN ABOVE SPACE DESCRIBE PROPOSED PROGRAM: If proposal is to deepen or plug back, give data on present productive zone and proposed new productive zone. If proposal is to drill or deepen directionally, give pertinent data on subsurface locations and measured and true vertical depths. Give blowout preventer program, if any.

24.

SIGNED

BD Shaw

TITLE

Adm. Supervisor

DATE

6-14-85

(This space for Federal or State)

RECEIVED
AUG 19 1985

PERMIT NO.

APPROVAL DATE

APPROVED BY

CONDITIONS OF APPROVAL, IF ANY:

OK
JB

OIL CON. DIV.
DIST. 3

NMOCC

*See Instructions On Reverse Side

**NEW MEXICO OIL CONSERVATION COMMISSION
WELL LOCATION AND ACREAGE DEDICATION PLAT**

Form C-102
Supersedes C-128
Effective 1-4-85

All distances must be from the outer boundaries of the Section.

Operator AMOCO PRODUCTION COMPANY			Lease L. V. HAMNER #CM		Well No. 1
Unit Letter C	Section 21	Township 29N	Range 9W	County San Juan	
Actual Footage Location of Well: 965 feet from the North line and 1795 feet from the West line					
Ground Level Elev. 5664	Producing Formation Dakota		Pool Basin Dakota		Dedicated Acreage 320 Acres

1. Outline the acreage dedicated to the subject well by colored pencil or hachure marks on the plat below.
2. If more than one lease is dedicated to the well, outline each and identify the ownership thereof (both as to working interest and royalty).
3. If more than one lease of different ownership is dedicated to the well, have the interests of all owners been consolidated by communitization, unitization, force-pooling, etc?

☐ Yes ☐ No -- If answer is "yes," type of consolidation _____

If answer is "no," list the owners and tract descriptions which have actually been consolidated. (Use reverse side of this form if necessary.) _____

No allowable will be assigned to the well until all interests have been consolidated (by communitization, unitization, forced-pooling, or otherwise) or until a non-standard unit, eliminating such interests, has been approved by the Commission.

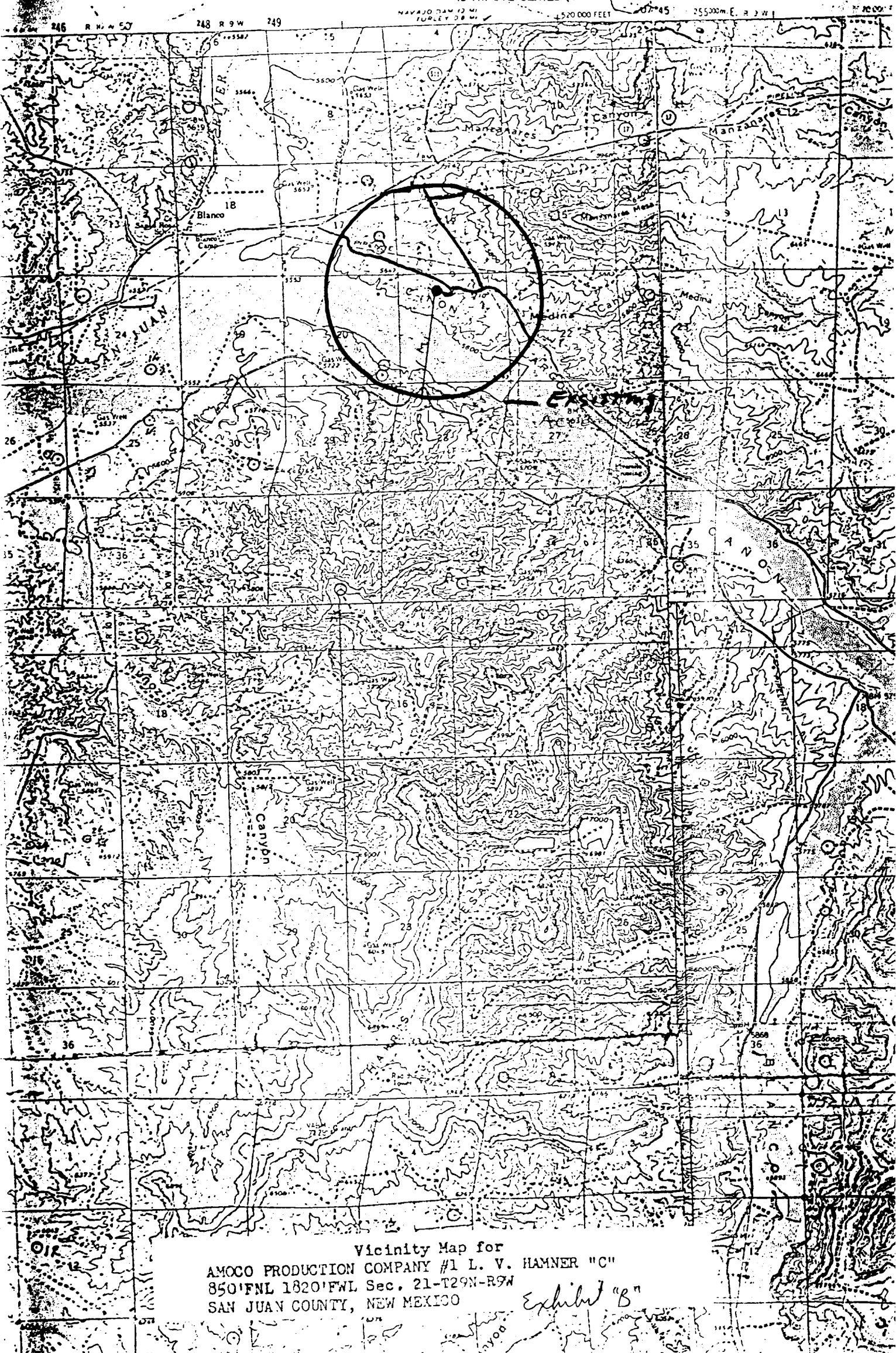
	<p align="center">RECEIVED JUL 02 1985 BUREAU OF LAND MANAGEMENT FARMINGTON RESOURCE AREA</p>
	<p align="center">RECEIVED AUG 19 1985 OIL CON. DIV. DIST. 9</p>

Scale: 1"=1000'

<p align="center">CERTIFICATION</p> <p>I hereby certify that the information contained herein is true and complete to the best of my knowledge and belief.</p> <p align="center"><i>B. D. Shaw</i></p>	
Name	B. D. Shaw
Position	Adm. Supervisor
Company	Amoco Production Co.
Date	6-26-85
<p>I hereby certify that the well location shown on this plat was plotted from field notes of actual surveys made by me or under my supervision, and that the same is true and correct to the best of my knowledge and belief.</p>	
Date Surveyed	April 29, 1985
Registered Professional Engineer and Land Surveyor	<p align="center"><i>Fred B. Kerr Jr.</i></p> <p align="center">Fred B. Kerr Jr.</p>
Certificate No.	3950

BLOOMFIELD QUAD
NEW MEXICO-SAN JUAN
15 MINUTE SERIES (TOPOG)

UNITED STATES
DEPARTMENT OF THE INTERIOR
GEOLOGICAL SURVEY



Vicinity Map for
AMOCO PRODUCTION COMPANY #1 L. V. HAMNER "C"
850' FNL 1820' FWL Sec. 21-T29N-R9W
SAN JUAN COUNTY, NEW MEXICO

Exhibit "B"